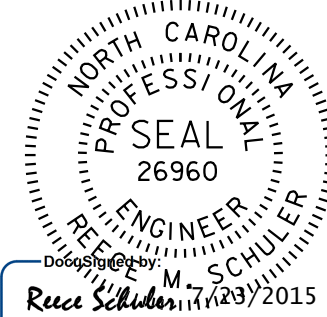
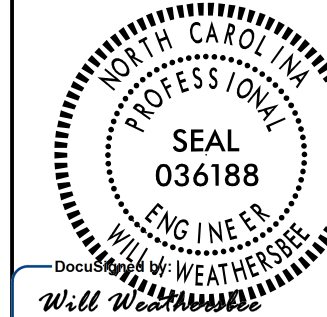
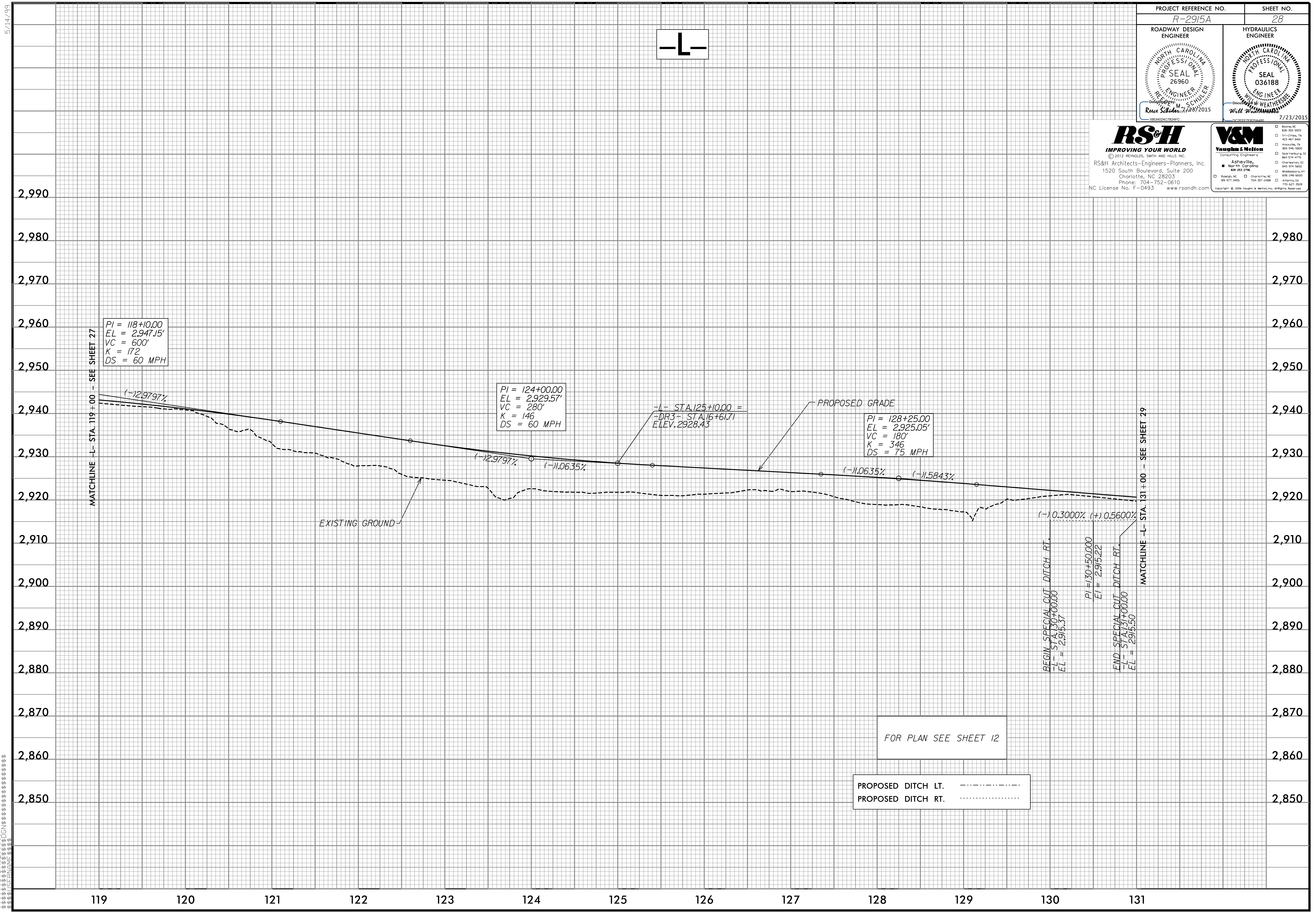


PROJECT REFERENCE NO. R-2915A	SHEET NO. 28
ROADWAY DESIGN ENGINEER	HYDRAULICS ENGINEER
	
R. Schuler	Will Weathers
7/23/2015	7/23/2015

RS&H
IMPROVING YOUR WORLD
© 2012 REYNOLDS, SMITH AND HILLS, INC.
RS&H Architects-Engineers-Planners, Inc.
1520 South Boulevard, Suite 200
Charlotte, NC 28203
Phone: 704-752-0610
NC License No. F-0493 www.rsandh.com

V&M
Vaughan & Melton
Consulting Engineers
Asheville, North Carolina
828-283-3788
919-977-9455
704-357-0488
Apopka, FL
321-281-1900
Copyright © 2006, Vaughan & Melton, Inc. All Rights Reserved.



-L-

PI = 118+10.00
EL = 2,947.15'
VC = 600'
K = 172
DS = 60 MPH

PI = 124+00.00
EL = 2,929.57'
VC = 280'
K = 146
DS = 60 MPH

PI = 128+25.00
EL = 2,925.05'
VC = 180'
K = 346
DS = 75 MPH

BEGIN SPECIAL CUT DITCH - RT.
-L- STA. 130+00.00
EL = 2,915.37

PI = 130+50.00
EL = 2,915.22

END SPECIAL CUT DITCH - RT.
-L- STA. 131+00.00
EL = 2,915.50

PROPOSED DITCH LT. - - - - -
PROPOSED DITCH RT.

FOR PLAN SEE SHEET 12

5/14/99
119 120 121 122 123 124 125 126 127 128 129 130 131