

PROJECT REFERENCE NO. R-2915A	SHEET NO. 26
ROADWAY DESIGN ENGINEER Will Weathers	HYDRAULICS ENGINEER Will Weathers

RS&H
IMPROVING YOUR WORLD
© 2012 REYNOLDS, SMITH AND HILLS, INC.
RS&H Architects-Engineers-Planners, Inc.
1520 South Boulevard, Suite 200
Charlotte, NC 28203
Phone: 704-752-0610
NC License No. F-0493 www.rsandh.com

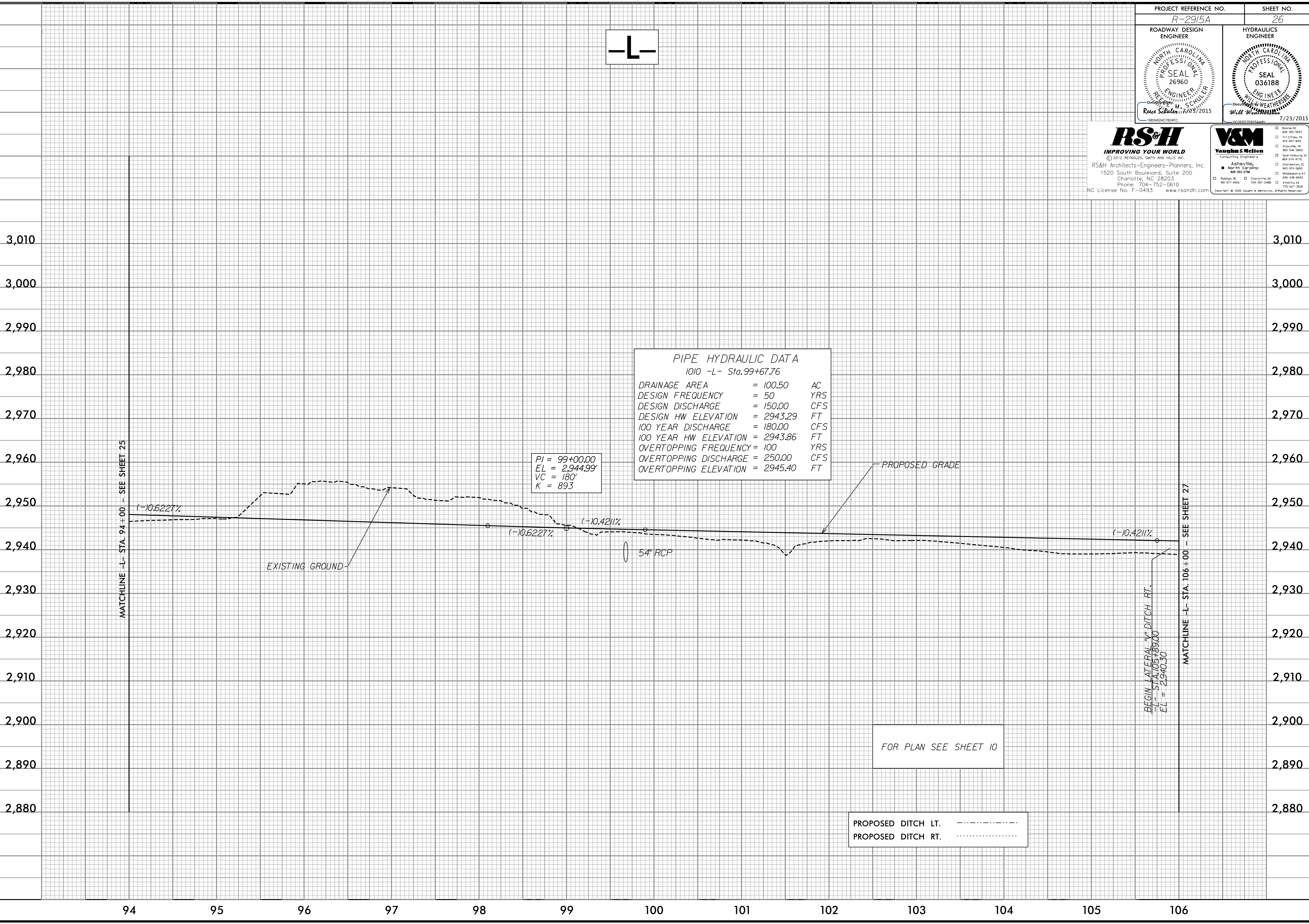
V&M
Vaughn & Melton
Consulting Engineers
Asheville, North Carolina
828-283-8788
919-977-9455
704-357-0488
410-621-1929
Copyright © 2006 Vaughn & Melton, Inc. All Rights Reserved.

-L-

PIPE HYDRAULIC DATA
1010 -L- Sta. 99+67.76

DRAINAGE AREA	= 100.50	AC
DESIGN FREQUENCY	= 50	YRS
DESIGN DISCHARGE	= 150.00	CFS
DESIGN HW ELEVATION	= 2943.29	FT
100 YEAR DISCHARGE	= 180.00	CFS
100 YEAR HW ELEVATION	= 2943.86	FT
OVERTOPPING FREQUENCY	= 100	YRS
OVERTOPPING DISCHARGE	= 250.00	CFS
OVERTOPPING ELEVATION	= 2945.40	FT

PI = 99+00.00
EL = 2,944.99'
VC = 180'
K = 89.5



FOR PLAN SEE SHEET 10

PROPOSED DITCH LT. - - - - -
PROPOSED DITCH RT. - - - - -

5/14/99

MATCHLINE -L- STA. 94+00 - SEE SHEET 25

MATCHLINE -L- STA. 106+00 - SEE SHEET 27

BEGIN LATERAL "4" DITCH RT.
L = STA. 105+89.00
EL = 2940.50