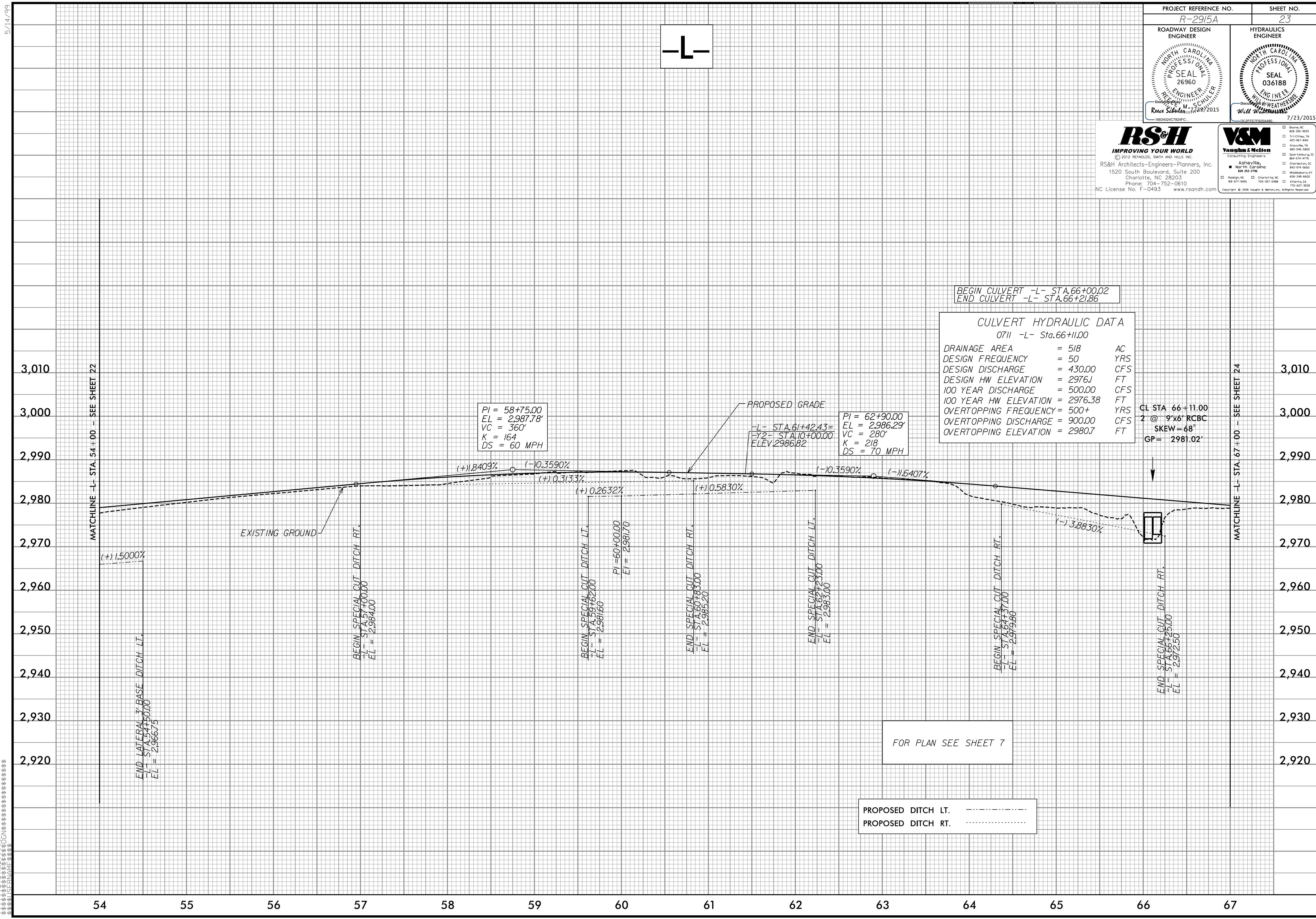


PROJECT REFERENCE NO. R-2915A	SHEET NO. 23
ROADWAY DESIGN ENGINEER Reese Schuler Professional Seal 26960	HYDRAULICS ENGINEER Will Weathers Professional Seal 036188
DATE: 7/23/2015	DATE: 7/23/2015

RS&H
IMPROVING YOUR WORLD
© 2012 REYNOLDS, SMITH AND HILLS, INC.
RS&H Architects-Engineers-Planners, Inc.
1520 South Boulevard, Suite 200
Charlotte, NC 28203
Phone: 704-752-0610
NC License No. F-0493 www.rsandh.com

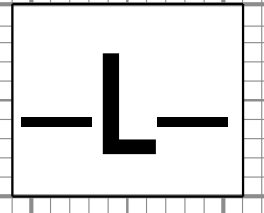
V&M
Vaughan & Melton
Consulting Engineers
Asheville, North Carolina
988-383-8788
988-377-9455
704-357-0488
410-621-1929
Copyright © 2006, Vaughn & Melton, Inc. All Rights Reserved.



5/14/99

MATCHLINE -L- STA. 54+00 - SEE SHEET 22

MATCHLINE -L- STA. 67+00 - SEE SHEET 24



PI = 58+75.00
EL = 2987.78'
VC = 360'
K = 164
DS = 60 MPH

PI = 62+90.00
EL = 2986.29'
VC = 280'
K = 218
DS = 70 MPH

END LATERAL 3' BASE DITCH LT.
-L- STA. 54+50.00
EL = 2966.75

BEGIN SPECIAL CUT DITCH RT.
-L- STA. 57+00.00
EL = 2984.00

BEGIN SPECIAL CUT DITCH LT.
-L- STA. 60+00.00
EL = 2981.60

PI = 60+00.00
EL = 2981.70

END SPECIAL CUT DITCH RT.
-L- STA. 60+33.00
EL = 2985.20

END SPECIAL CUT DITCH LT.
-L- STA. 62+33.00
EL = 2983.00

BEGIN SPECIAL CUT DITCH RT.
-L- STA. 64+37.00
EL = 2979.80

END SPECIAL CUT DITCH RT.
-L- STA. 66+25.00
EL = 2972.50

54 55 56 57 58 59 60 61 62 63 64 65 66 67