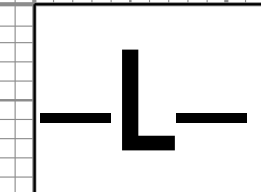


RS&H logo: IMPROVING YOUR WORLD. 2012 REYNOLDS, SMITH AND HILLS INC. RS&H Architects-Engineers-Planners, Inc. 1520 South Boulevard, Suite 200 Charlotte, NC 28203. Phone: 704-752-0610. NC License No. F-0493 www.rsandh.com



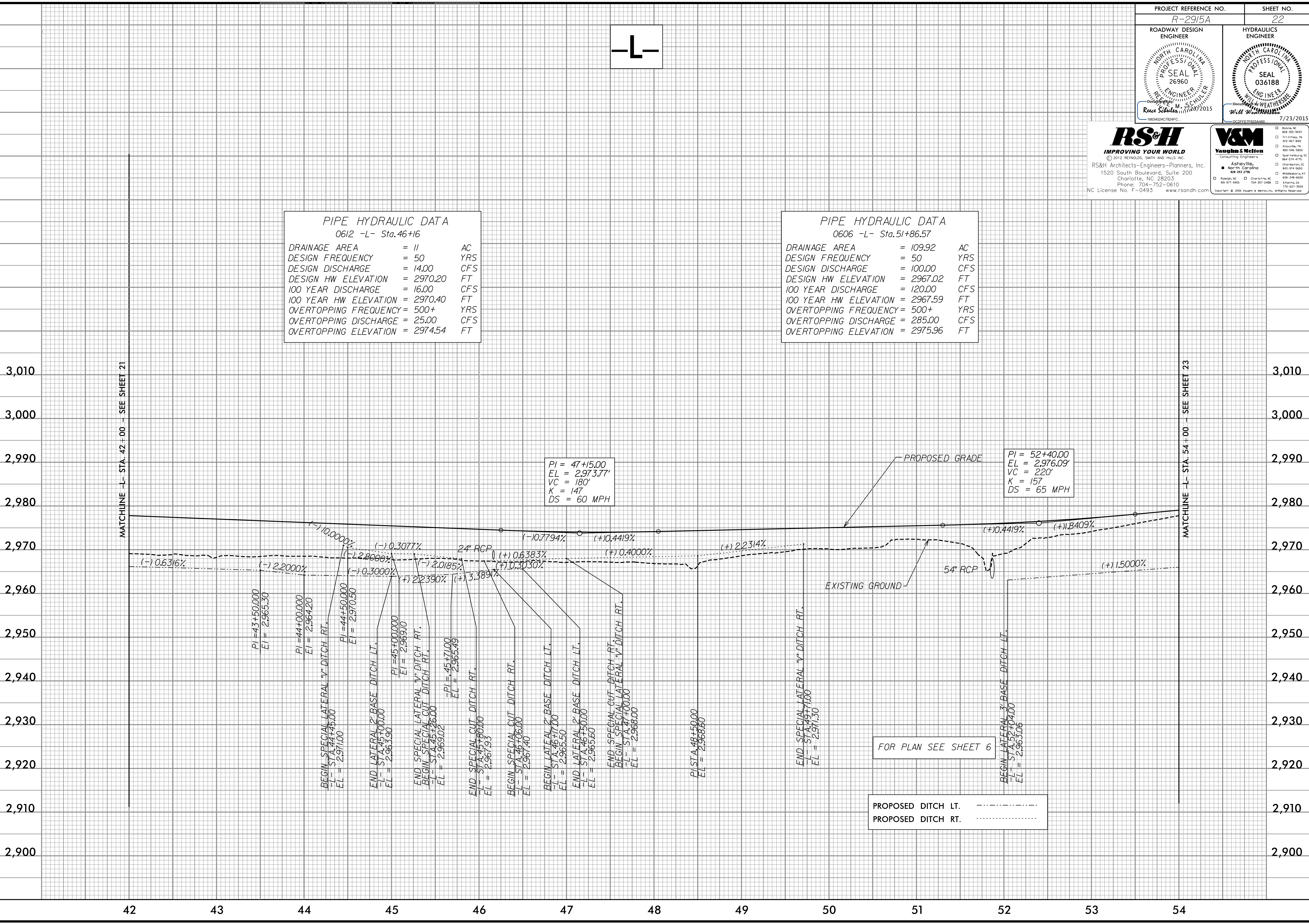
PIPE HYDRAULIC DATA
0612 -L- Sta.46+16

DRAINAGE AREA	= 11	AC
DESIGN FREQUENCY	= 50	YRS
DESIGN DISCHARGE	= 14.00	CFS
DESIGN HW ELEVATION	= 2970.20	FT
100 YEAR DISCHARGE	= 16.00	CFS
100 YEAR HW ELEVATION	= 2970.40	FT
OVERTOPPING FREQUENCY	= 500+	YRS
OVERTOPPING DISCHARGE	= 25.00	CFS
OVERTOPPING ELEVATION	= 2974.54	FT

PIPE HYDRAULIC DATA
0606 -L- Sta.51+86.57

DRAINAGE AREA	= 109.92	AC
DESIGN FREQUENCY	= 50	YRS
DESIGN DISCHARGE	= 100.00	CFS
DESIGN HW ELEVATION	= 2967.02	FT
100 YEAR DISCHARGE	= 120.00	CFS
100 YEAR HW ELEVATION	= 2967.59	FT
OVERTOPPING FREQUENCY	= 500+	YRS
OVERTOPPING DISCHARGE	= 285.00	CFS
OVERTOPPING ELEVATION	= 2975.96	FT

5/14/99
C:\p\rsandh\proj\2915a\dwg\0612-0606.dwg



PI = 47+15.00
EL = 2973.77'
VC = 180'
K = 147
DS = 60 MPH

PI = 52+40.00
EL = 2976.09'
VC = 220'
K = 157
DS = 65 MPH

FOR PLAN SEE SHEET 6

PROPOSED DITCH LT. - - - - -
PROPOSED DITCH RT.

MATCHLINE -L- STA. 42 -00 - SEE SHEET 21

MATCHLINE -L- STA. 54 -00 - SEE SHEET 23

42 43 44 45 46 47 48 49 50 51 52 53 54

3,010
3,000
2,990
2,980
2,970
2,960
2,950
2,940
2,930
2,920
2,910
2,900