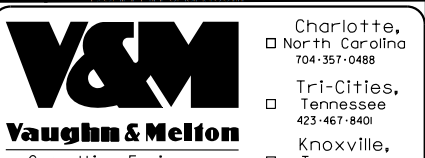
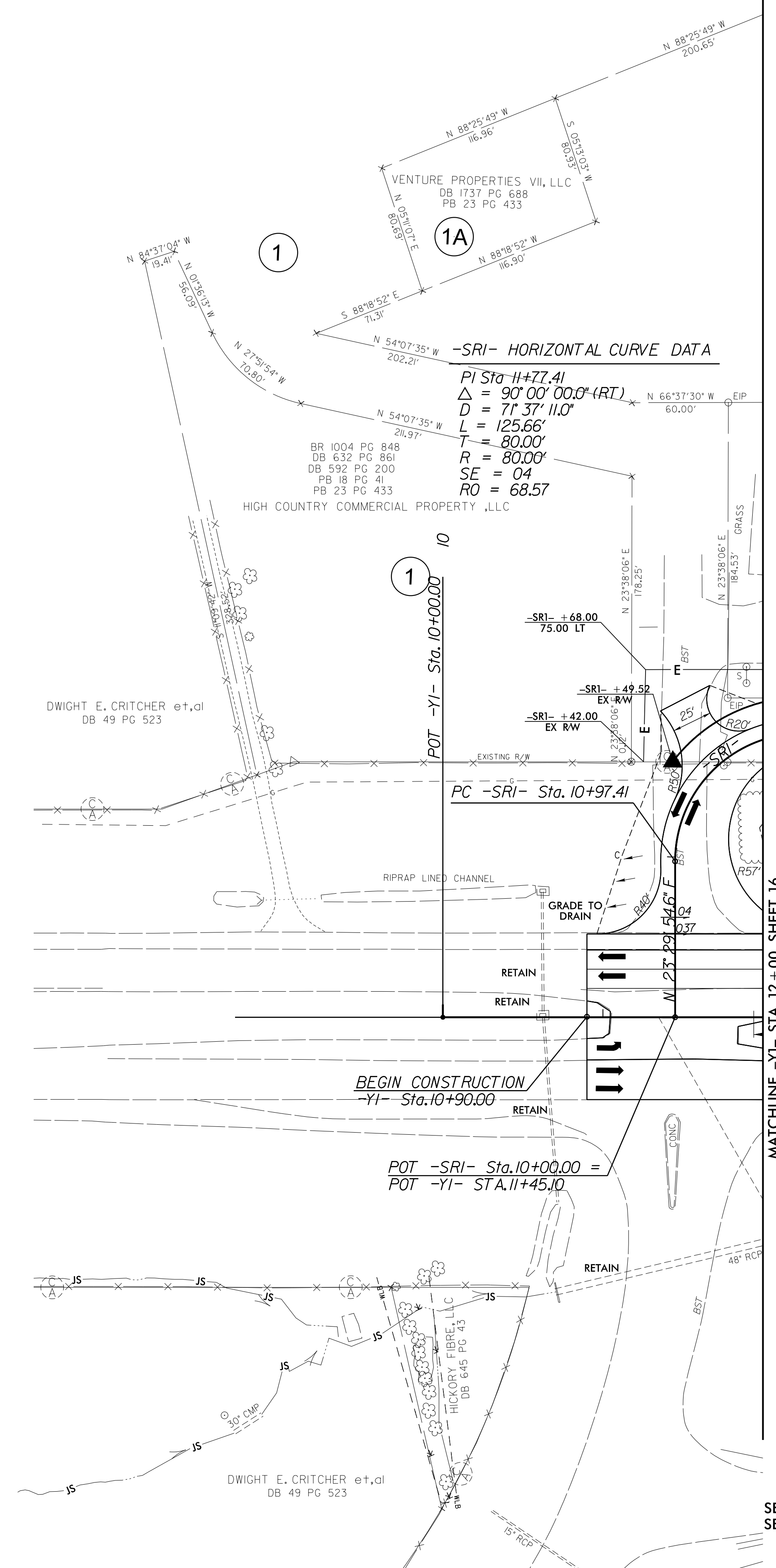
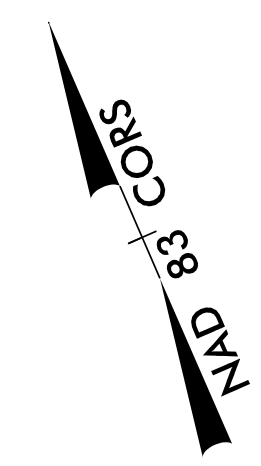


PROJECT REFERENCE NO. R-2915A	SHEET NO. 17
RW SHEET NO.	
ROADWAY DESIGN ENGINEER RES. M. SCHULER 7/23/2015	HYDRAULICS ENGINEER WILL WEATHERS 7/23/2015



RS&H
IMPROVING YOUR WORLD
© 2012 REYNOLDS, SMITH AND HILLS, INC.
RS&H Architects-Engineers-Planners, Inc.
1520 South Boulevard, Suite 200
Charlotte, NC 28203
Phone: 704-752-0610
NC License No. F-0493 www.rsandh.com

V&M
Vaughan & Melton
Consulting Engineers
Asheville, NC 28801
Phone: 828-253-2796



REVISIONS

\$FILE\$
\$DATE\$

SEE SHEET 34 FOR -YI- PROFILE
SEE SHEET 40 FOR -SRI- PROFILE