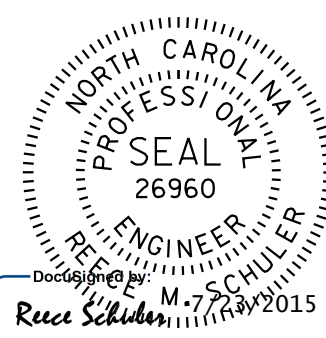
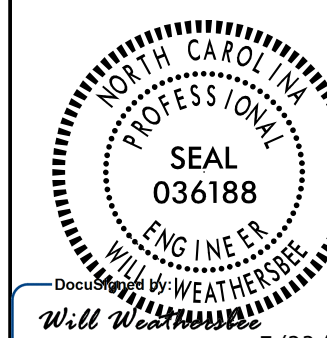


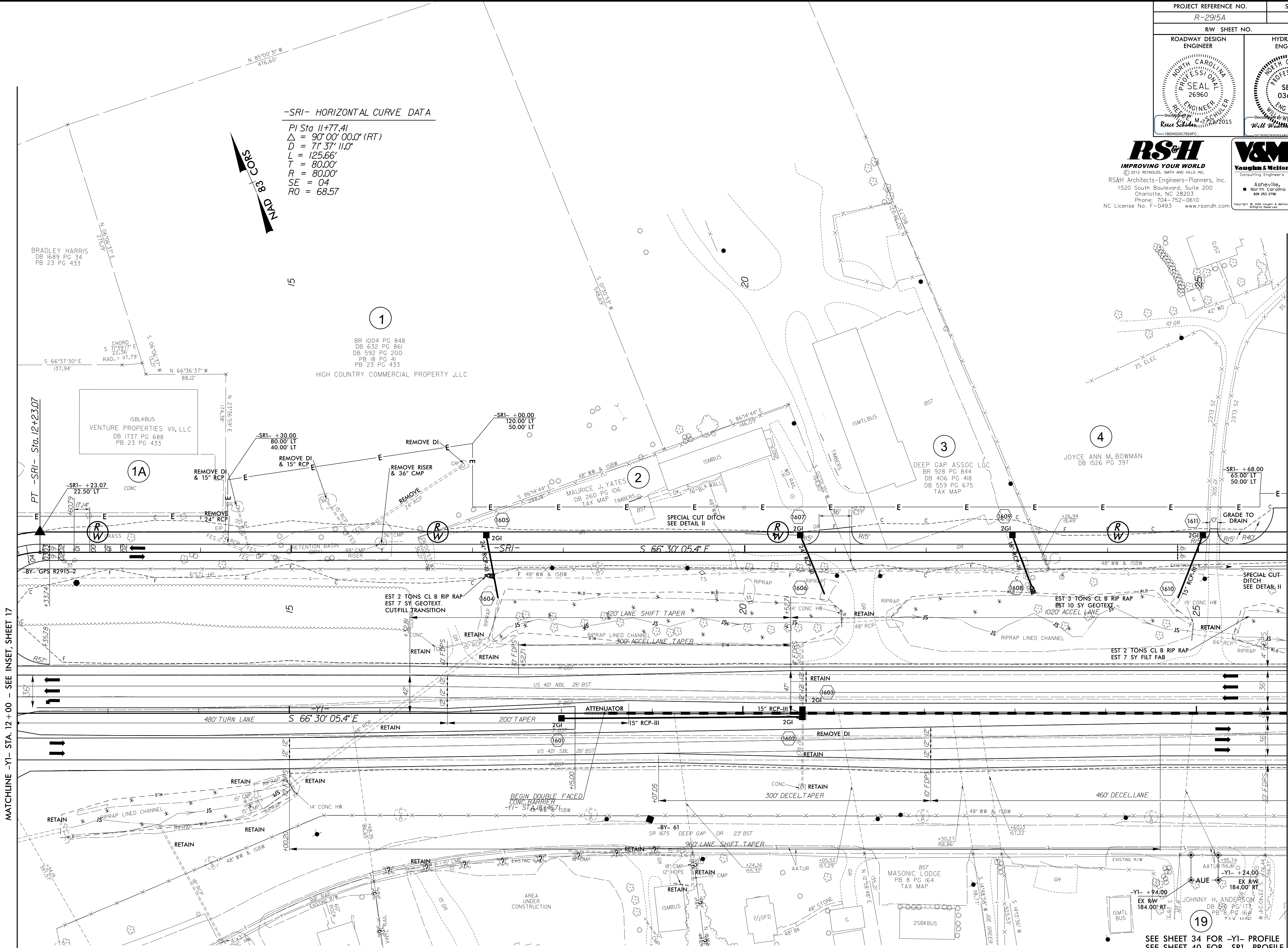
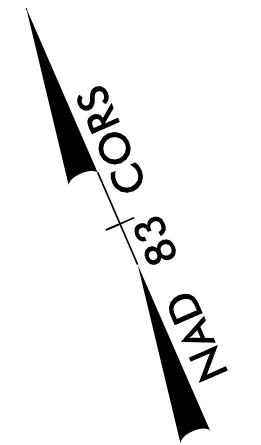
PROJECT REFERENCE NO. R-2915A		SHEET NO. 16	
RW SHEET NO.			
ROADWAY DESIGN ENGINEER		HYDRAULICS ENGINEER	
			
R. Schuler, M. Schuler 7/23/2015		Will Weathers 7/23/2015	

RS&H
IMPROVING YOUR WORLD
© 2012 REMOLD, SOUTH AND WELLS, INC.
RS&H Architects-Engineers-Planners, Inc.
1520 South Boulevard, Suite 200
Charlotte, NC 28203
Phone: 704-752-0610
NC License No. F-0493 www.rsandh.com

V&M
Vaughan & Melton
Consulting Engineers
Asheville, NC
North Carolina
404-253-2796
Middleboro, MA
Kentucky
South Carolina
804-514-4775

-SRI- HORIZONTAL CURVE DATA

PI Sta 11+77.41
 $\Delta = 90^{\circ} 00' 00.0''$ (RT)
 $D = 71' 37'' 11.0''$
 $L = 125.66'$
 $T = 80.00'$
 $R = 80.00'$
 $SE = 04$
 $RO = 68.57$



MATCHLINE -YI- STA. 12+00 - SEE INSET SHEET 17

MATCHLINE -YI- STA. 26+00 - SEE SHEET 4

SEE SHEET 34 FOR -YI- PROFILE
 SEE SHEET 40 FOR -SRI- PROFILE

REVISIONS

\$FILES\$
 \$DATES\$