

PROJECT REFERENCE NO. R-2915A	SHEET NO. 14
RW SHEET NO.	
ROADWAY DESIGN ENGINEER SEAL 26960	HYDRAULICS ENGINEER SEAL 036188

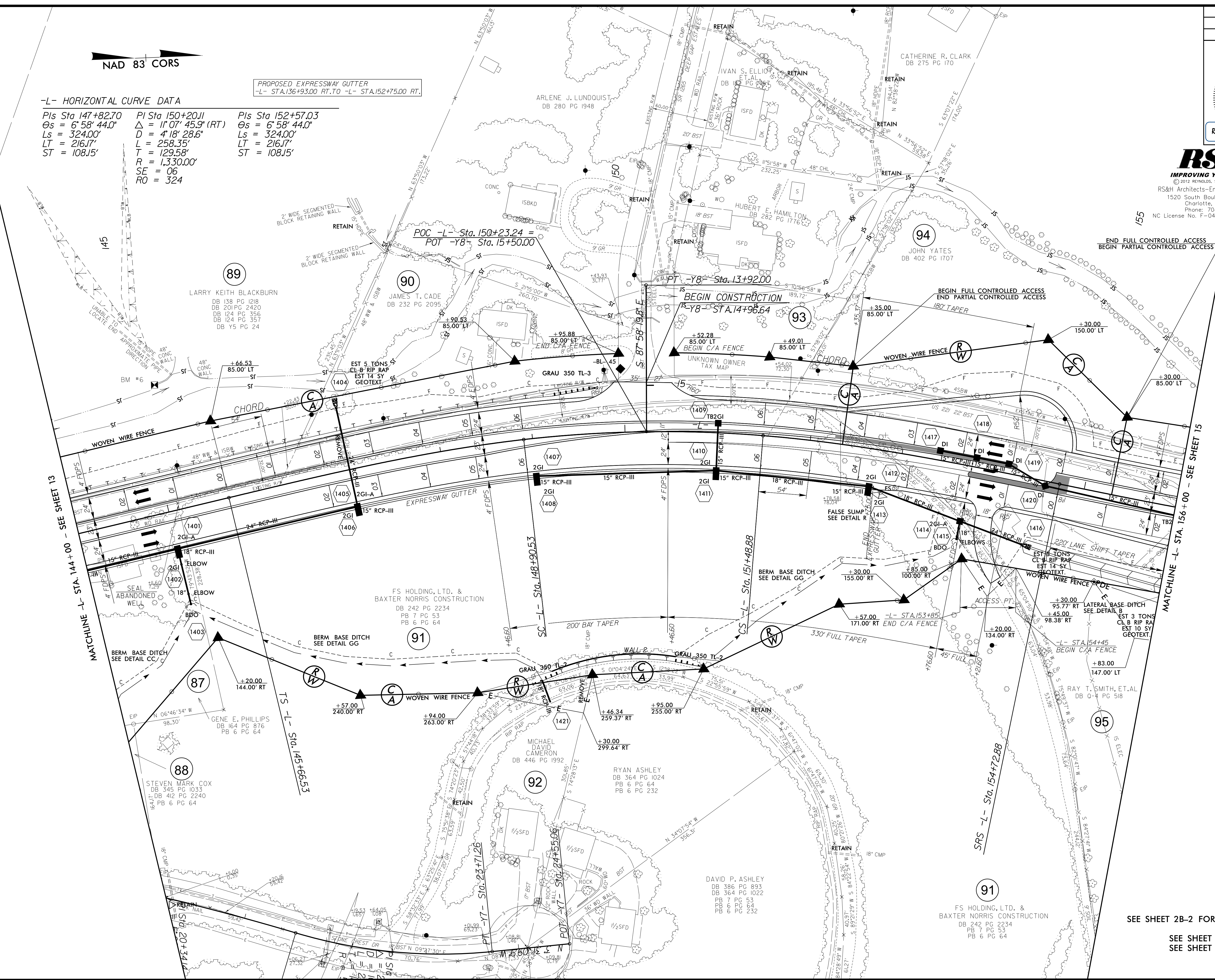
RS&H
IMPROVING YOUR WORLD
 © 2012 RICHMOND, SOUTH AND HILLS, INC.
 RS&H Architects-Engineers-Planners, Inc.
 1520 South Boulevard, Suite 200
 Charlotte, NC 28203
 Phone: 704-752-0610
 NC License No. F-0493 www.rsandh.com

V&M
 Vaughan & Melton
 Consulting Engineers
 Asheville, North Carolina
 428-253-2796
 Copyright © 2008 Vaughan & Melton, Inc. All Rights Reserved.

-L- HORIZONTAL CURVE DATA

PIs Sta 147+82.70	PI Sta 150+20.11	PIs Sta 152+57.03
$\Theta_s = 6^\circ 58' 44.0''$	$\Delta = 11^\circ 07' 45.9''$ (RT)	$\Theta_s = 6^\circ 58' 44.0''$
$L_s = 324.00'$	$D = 418' 28.6''$	$L_s = 324.00'$
$LT = 216.17'$	$L = 258.35'$	$LT = 216.17'$
$ST = 108.15'$	$R = 1,330.00'$	$ST = 108.15'$
	$SE = 06$	
	$RO = 324$	

PROPOSED EXPRESSWAY GUTTER
 -L- STA.136+93.00 RT. TO -L- STA.152+75.00 RT.



REVISIONS

MATCHLINE -L- STA. 144+00 - SEE SHEET 13

MATCHLINE -L- STA. 156+00 - SEE SHEET 15

SEE SHEET 2B-2 FOR MEDIAN CROSSOVER DETAIL
 SEE SHEET 30 FOR -L- PROFILE
 SEE SHEET 39 FOR -Y8- PROFILE

\$FILE\$
\$DATE\$