

PROJECT REFERENCE NO. R-2915A		SHEET NO. 11	
RW SHEET NO.		HYDRAULICS ENGINEER	
ROADWAY DESIGN ENGINEER		SEAL 036188	
M. SCHULLER 1005 W. WOODROW WILSON BLVD. RALEIGH, NC 27603 919-877-9555		WILL WEATHERSEE 1005 W. WOODROW WILSON BLVD. RALEIGH, NC 27603 919-877-9555	

RS&H
IMPROVING YOUR WORLD
 3015 REMOINS, SMITH AND HILLS, INC.
 RS&H Architects-Engineers-Planners, Inc.
 1520 South Boulevard, Suite 200
 Charlotte, NC 28203
 Phone: 704-752-0610
 Fax: 704-752-0493
 www.rsandh.com

V&M
Vaughan & Melton
 Consulting Engineers
 Asheville, NC
 North Carolina
 828-253-2796
 Raleigh, NC
 919-877-9555

Boone, NC
 828-355-9935
 Tryon, NC
 828-687-8400
 Knoxville, TN
 865-546-5800
 Spartanburg, SC
 803-574-6600
 Charleston, SC
 803-548-6600
 Asheville, NC
 828-253-2796
 Charlotte, NC
 704-752-0610
 704-752-0493
 704-627-9509

Copyright © 2006 Vaughan & Melton, Inc. All Rights Reserved

11981	US 221	-L-	11981
20387			20387
416		416	
699		699	
SR 1171		-Y4-	
YR 2015	830		
YR 2035	1400		

YR 2015	1400		
YR 2035	2400		
SR 1100		-Y5-	
700		700	
1200		1200	
12154	US 221	-L-	12154
20422			20422

-DR-2- HORIZONTAL CURVE DATA

POT Sta 10+00	PI Sta 11+80.85
N 88°18'35.6" E	PI Sta 12+43.80
PC Sta 10+39.50	Δ = 69°56'12.2" (LT)
PI Sta 11+29.48	D = 63°39'43.1"
Δ = 89°59'21.6" (RT)	L = 109.86'
D = 63°39'43.1"	T = 62.94'
L = 141.35'	R = 90.00'
T = 89.98'	PT Sta 12+90.17
R = 90.00'	S 71°38'15.0" E
	POT Sta 13+10.00

-Y4- HORIZONTAL CURVE DATA

PI Sta 12+15.71
Δ = 39°53'52.8" (LT)
D = 1°48'48.8"
L = 337.73'
T = 176.04'
R = 485.00'

-Y6- HORIZONTAL CURVE DATA

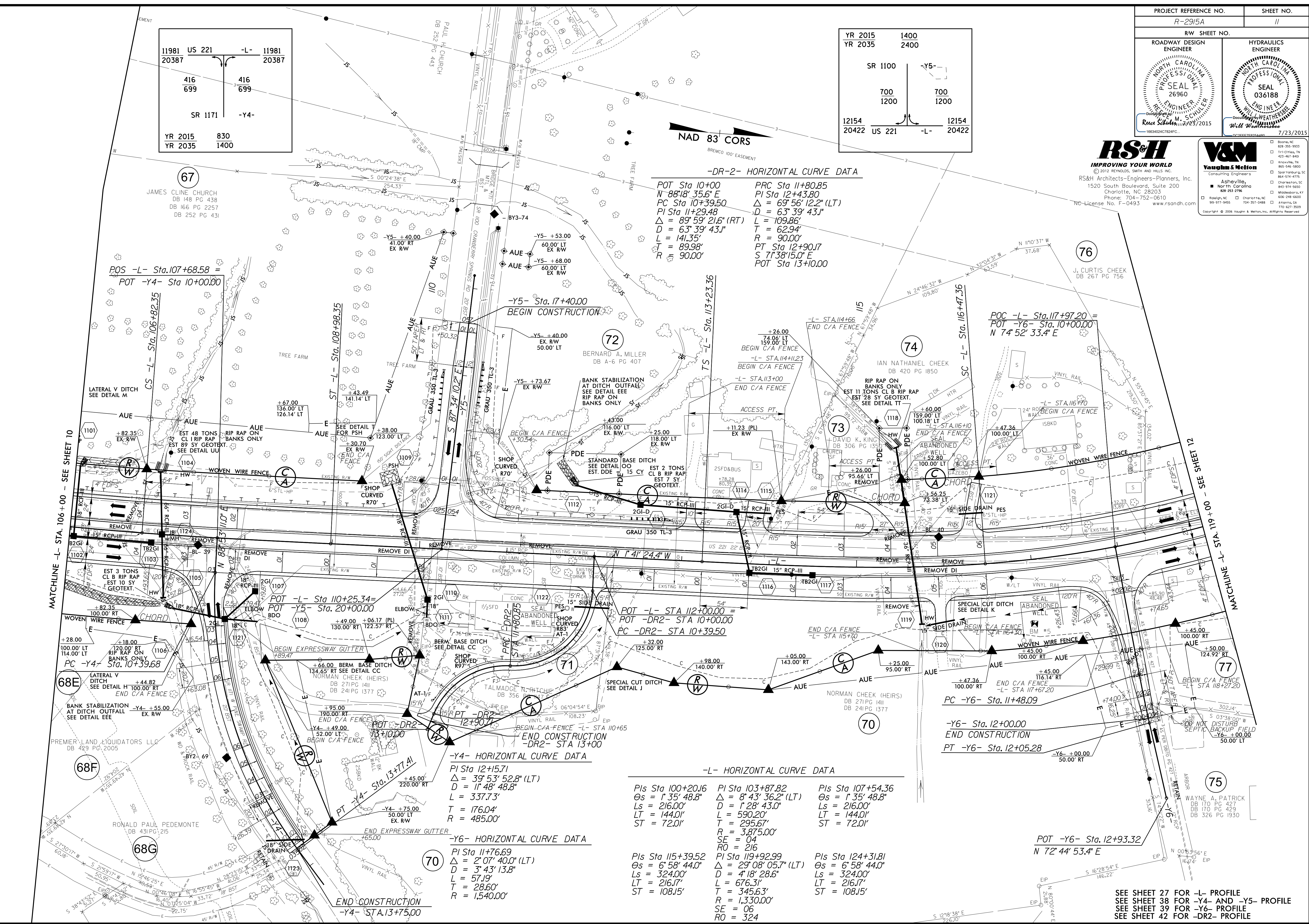
PI Sta 11+76.69
Δ = 2°07'40.0" (LT)
D = 3°43'13.8"
L = 57.19'
T = 28.60'
R = 1,540.00'

-L- HORIZONTAL CURVE DATA

Pls Sta 100+20.16	PI Sta 103+87.82	Pls Sta 107+54.36
Δs = 1°35'48.8"	Δ = 8°43'36.2" (LT)	Δs = 1°35'48.8"
Ls = 216.00'	D = 1°28'43.0"	Ls = 216.00'
LT = 144.01'	L = 590.20'	LT = 144.01'
ST = 72.01'	T = 295.67'	ST = 72.01'
	R = 3,875.00'	
	SE = 04	
	RO = 216	
Pls Sta 115+39.52	PI Sta 119+92.99	Pls Sta 124+31.81
Δs = 6°58'44.0"	Δ = 29°08'05.7" (LT)	Δs = 6°58'44.0"
Ls = 324.00'	D = 4°18'28.6"	Ls = 324.00'
LT = 216.17'	L = 676.31'	LT = 216.17'
ST = 108.15'	T = 345.63'	ST = 108.15'
	R = 1,330.00'	
	SE = 06	
	RO = 324	

REVISIONS

FILED \$
 DATE \$



SEE SHEET 27 FOR -L- PROFILE
 SEE SHEET 38 FOR -Y4- AND -Y5- PROFILE
 SEE SHEET 39 FOR -Y6- PROFILE
 SEE SHEET 42 FOR -DR2- PROFILE