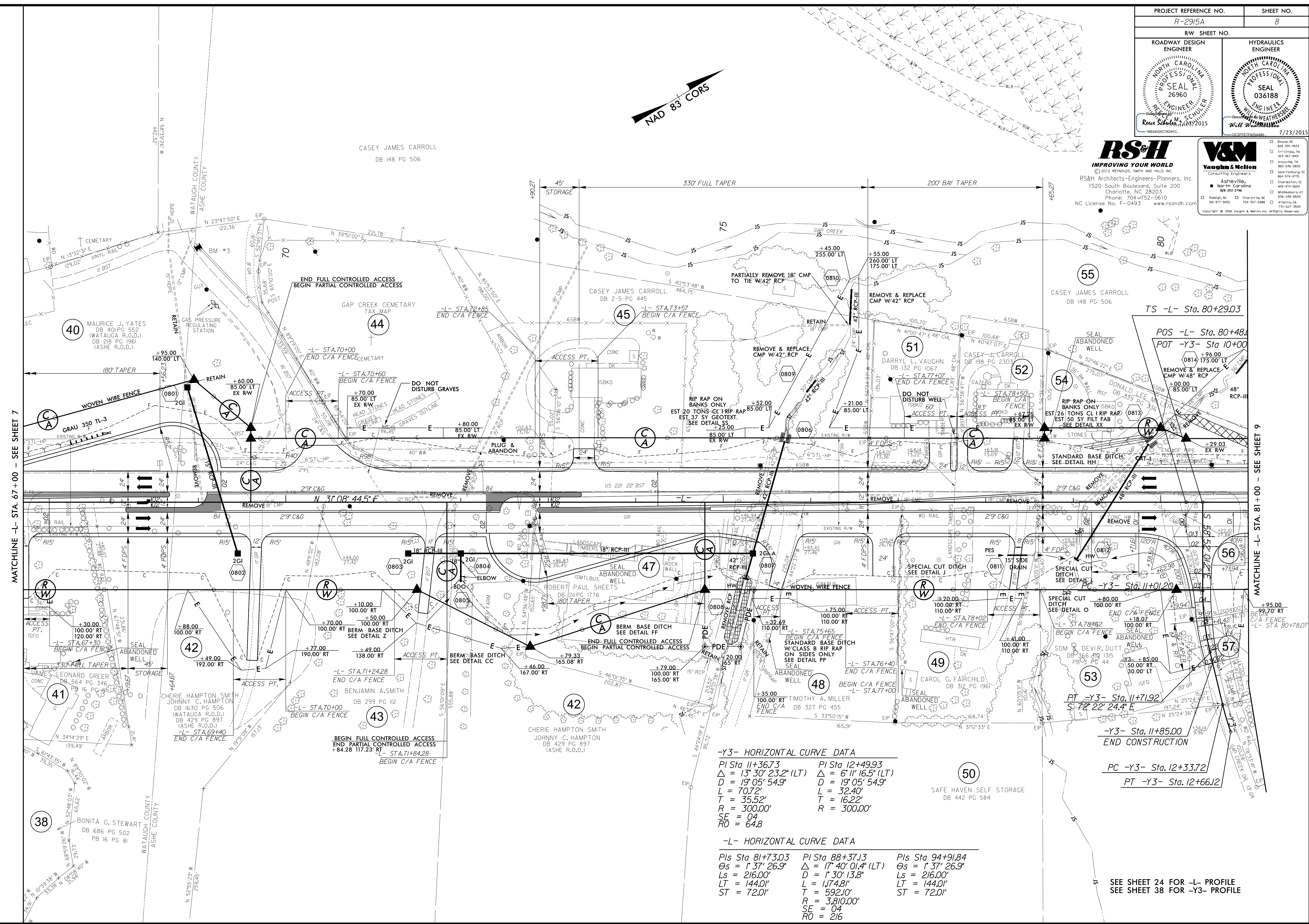


PROJECT REFERENCE NO. R-2915A	SHEET NO. 8
RW SHEET NO.	
ROADWAY DESIGN ENGINEER	HYDRAULICS ENGINEER
7/23/2015	

RS&H
IMPROVING YOUR WORLD
 © 2012 REVISIONS, 58th AND WELLS, INC.
 RS&H Architects-Engineers-Planners, Inc.
 1520 South Boulevard, Suite 200
 Charlotte, NC 28203
 Phone: 704-752-0610
 NC License No. F-0493 www.rsandh.com

V&M
Vaughan & Melton
 Consulting Engineers
 Asheville, NC
 Raleigh, NC
 Charlotte, NC
 Winston-Salem, NC
 Durham, NC
 Greensboro, NC
 High Point, NC
 Charlotte, NC
 Winston-Salem, NC
 Durham, NC
 Greensboro, NC
 High Point, NC



REVISIONS

MATCHLINE -L- STA. 67+00 - SEE SHEET 7

MATCHLINE -L- STA. 81+00 - SEE SHEET 9

-Y3- HORIZONTAL CURVE DATA

PI Sta 11+367.3	PI Sta 12+499.3
$\Delta = 13^{\circ} 30' 23.2''$ (LT)	$\Delta = 6^{\circ} 11' 16.5''$ (LT)
$D = 19^{\circ} 05' 54.9''$	$D = 19^{\circ} 05' 54.9''$
$L = 70.72'$	$L = 32.40'$
$T = 35.52'$	$T = 16.22'$
$R = 300.00'$	$R = 300.00'$
$SE = 04$	
$RO = 64.8$	

-L- HORIZONTAL CURVE DATA

PIs Sta 81+73.03	PI Sta 88+37.13	PIs Sta 94+91.84
$\Delta s = 1^{\circ} 37' 26.9''$	$\Delta = 17^{\circ} 40' 01.4''$ (LT)	$\Delta s = 1^{\circ} 37' 26.9''$
$Ls = 216.00'$	$D = 1^{\circ} 30' 13.8''$	$Ls = 216.00'$
$LT = 144.01'$	$L = 1174.81'$	$LT = 144.01'$
$ST = 72.01'$	$T = 592.10'$	$ST = 72.01'$
	$R = 3,810.00'$	
	$SE = 04$	
	$RO = 216$	

PC -Y3- Sta. 12+337.2
 PT -Y3- Sta. 12+661.2

SEE SHEET 24 FOR -L- PROFILE
 SEE SHEET 38 FOR -Y3- PROFILE

FILE\$
 DATE\$