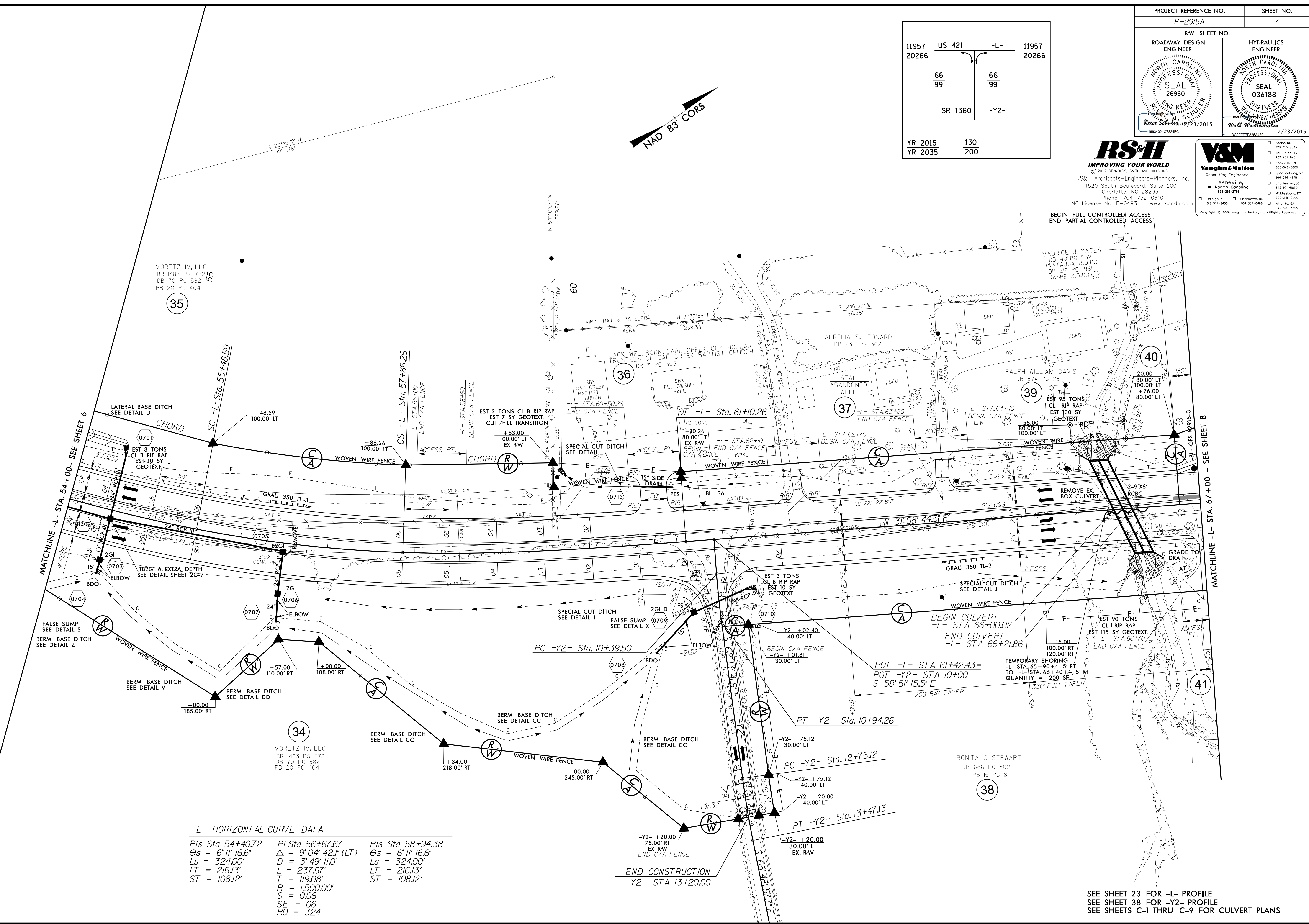
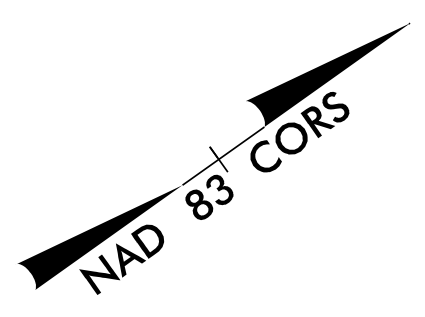


PROJECT REFERENCE NO. R-2915A		SHEET NO. 7	
RW SHEET NO.		HYDRAULICS ENGINEER	
ROADWAY DESIGN ENGINEER		SEAL 26960	
NORTH CAROLINA PROFESSIONAL SEAL 26960		NORTH CAROLINA PROFESSIONAL SEAL 036188	
RECEIVED 7/23/2015		WILL WEATHERS	
16634024C7824FC		1072327826A891	

11957	US 421	-L-	11957
20266			20266
66		66	
99		99	
	SR 1360	-Y2-	
YR 2015	130		
YR 2035	200		

RS&H
IMPROVING YOUR WORLD
 © 2012 REMEDIAL SOLUTIONS, INC.
 RS&H Architects-Engineers-Planners, Inc.
 1520 South Boulevard, Suite 200
 Charlotte, NC 28203
 Phone: 704-752-0610
 NC License No. F-0493 www.rsandh.com

V&M
Vaughan & Melton
 Consulting Engineers
 Asheville, NC
 Raleigh, NC
 919-977-9455



REVISIONS

\$FILES\$
\$DATES\$

-L- HORIZONTAL CURVE DATA

PIs Sta 54+40.72	PIs Sta 56+67.67	PIs Sta 58+94.38
$\Delta s = 6' 11'' 16.6''$	$\Delta = 9' 04'' 42.1''$ (LT)	$\Delta s = 6' 11'' 16.6''$
$Ls = 324.00'$	$L = 237.67'$	$Ls = 324.00'$
$LT = 216.13'$	$T = 119.08'$	$LT = 216.13'$
$ST = 108.12'$		$ST = 108.12'$
$R = 1,500.00'$		
$S = 0.06$		
$SE = 06$		
$RO = 324$		

SEE SHEET 23 FOR -L- PROFILE
 SEE SHEET 38 FOR -Y2- PROFILE
 SEE SHEETS C-1 THRU C-9 FOR CULVERT PLANS