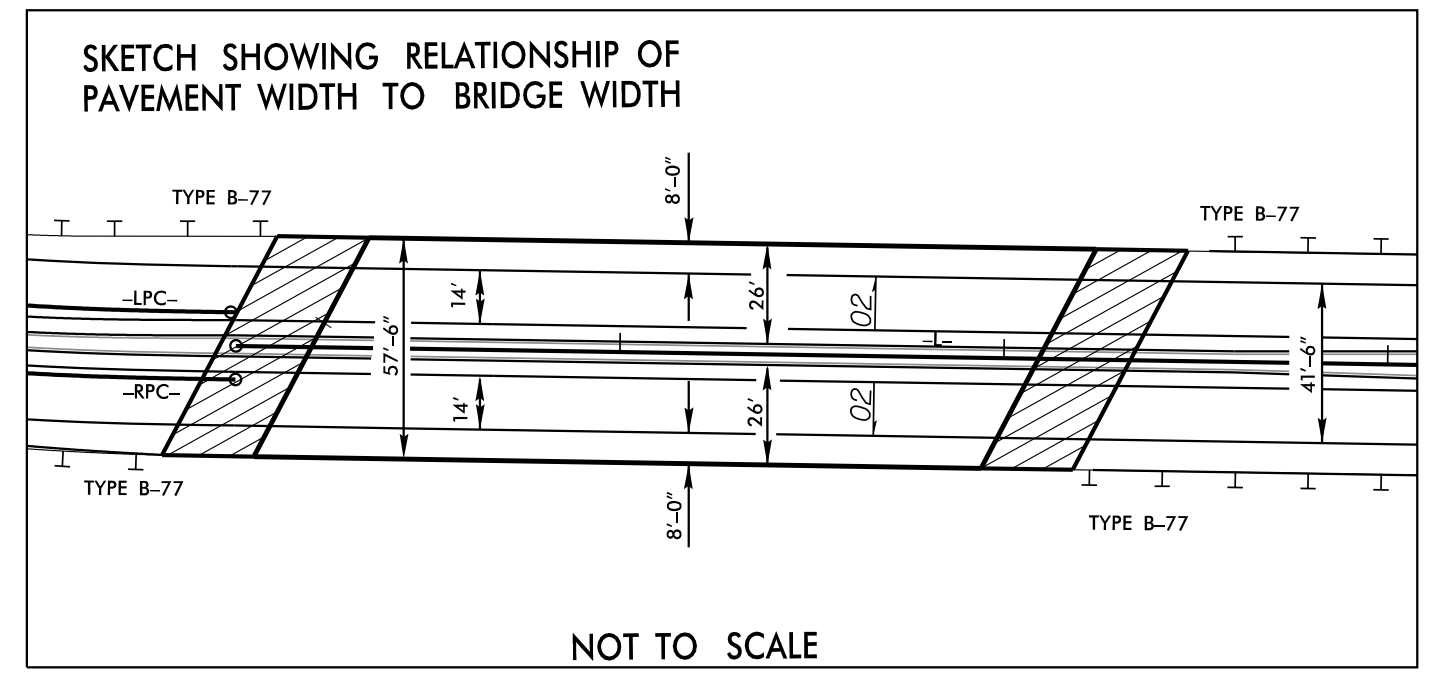
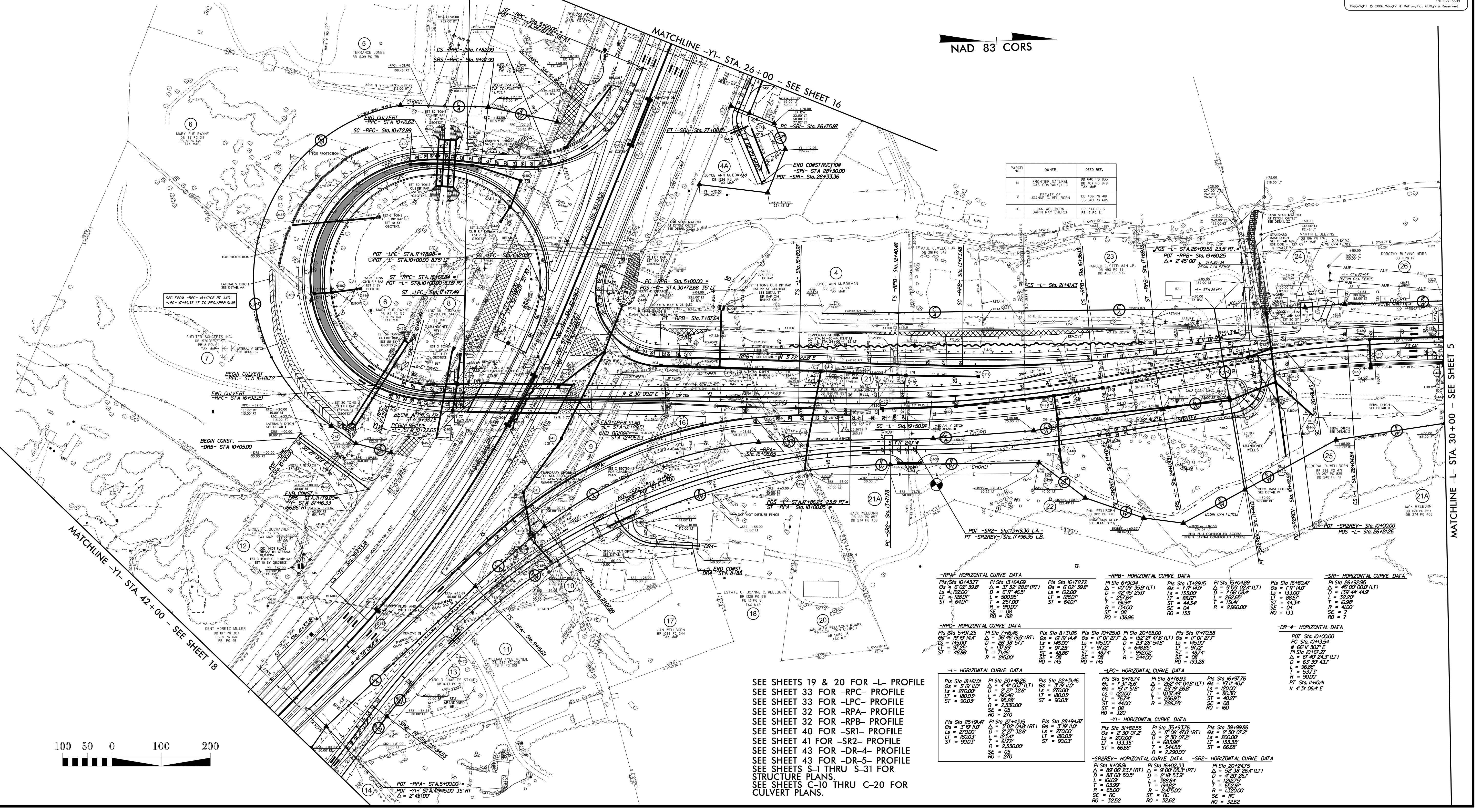


20,110	12,600
33,400	20,600
US 421	
-Y1-	
9750	12,110
16600	20,400
-L-	
2230	US 221
3800	
YR 2015	12,600
YR 2035	20,600



PROJECT REFERENCE NO.	R-2915A	SHEET NO.	4
ROADWAY DESIGN ENGINEER	HYDRAULICS ENGINEER		
<p>RS&H IMPROVING YOUR WORLD</p> <p>RS&H Architects-Engineers-Planners, Inc. 1520 South Boulevard, Suite 200 Charlotte, NC 28203 Phone: 704-752-0610 NC License No. F-0493 www.rsandh.com</p>			
<p>V&M Vaughn & Melton</p> <p>Asheville, North Carolina 99-977-9455 704-351-0498 Copyright © 2006 Vaughn & Melton, Inc. All Rights Reserved.</p>			

BEGIN TIP PROJECT R-2915A
-L- POT STA. 9+98.75



PARCEL NO.	OWNER	DEED REF.
10	FRONTIER NATURAL GAS COMPANY, LLC	DB 447 PG 835 DB 102 PG 818 TAX MAP
9	JOANNE C. WELBORN	DB 405 PG 48 DB 348 PG 466
16	JAN WELBORN DARRIN RAY CHURCH	DB 144 PG 48 DB 13 PG 8

-RPA- HORIZONTAL CURVE DATA			
Pi Sta 10+43.77	Pi Sta 13+64.69	Pi Sta 16+72.72	Pi Sta 19+80.47
Os = 37.9' 11.0"	Os = 37.9' 11.0"	Os = 37.9' 11.0"	Os = 37.9' 11.0"
Ls = 180.0'	Ls = 180.0'	Ls = 180.0'	Ls = 180.0'
Ts = 257.0'	Ts = 257.0'	Ts = 257.0'	Ts = 257.0'
St = 64.0'	St = 64.0'	St = 64.0'	St = 64.0'
R = 300.0'	R = 300.0'	R = 300.0'	R = 300.0'
SE = 08	SE = 08	SE = 08	SE = 08
RO = 192	RO = 192	RO = 192	RO = 192

-RPB- HORIZONTAL CURVE DATA			
Pi Sta 10+91.94	Pi Sta 13+29.15	Pi Sta 15+04.29	Pi Sta 16+80.47
Os = 17.0' 11.0"	Os = 17.0' 11.0"	Os = 17.0' 11.0"	Os = 17.0' 11.0"
Ls = 131.0'	Ls = 131.0'	Ls = 131.0'	Ls = 131.0'
Ts = 257.0'	Ts = 257.0'	Ts = 257.0'	Ts = 257.0'
St = 64.0'	St = 64.0'	St = 64.0'	St = 64.0'
R = 140.0'	R = 140.0'	R = 140.0'	R = 140.0'
SE = 04	SE = 04	SE = 04	SE = 04
RO = 133	RO = 133	RO = 133	RO = 133

-SRI- HORIZONTAL CURVE DATA			
Pi Sta 10+00.00	Pi Sta 10+00.00	Pi Sta 10+00.00	Pi Sta 10+00.00
Os = 0.0'	Os = 0.0'	Os = 0.0'	Os = 0.0'
Ls = 0.0'	Ls = 0.0'	Ls = 0.0'	Ls = 0.0'
Ts = 0.0'	Ts = 0.0'	Ts = 0.0'	Ts = 0.0'
St = 0.0'	St = 0.0'	St = 0.0'	St = 0.0'
R = 0.0'	R = 0.0'	R = 0.0'	R = 0.0'
SE = 00	SE = 00	SE = 00	SE = 00
RO = 0	RO = 0	RO = 0	RO = 0

-DR-4- HORIZONTAL CURVE DATA			
Pi Sta 10+00.00	Pi Sta 10+00.00	Pi Sta 10+00.00	Pi Sta 10+00.00
Os = 0.0'	Os = 0.0'	Os = 0.0'	Os = 0.0'
Ls = 0.0'	Ls = 0.0'	Ls = 0.0'	Ls = 0.0'
Ts = 0.0'	Ts = 0.0'	Ts = 0.0'	Ts = 0.0'
St = 0.0'	St = 0.0'	St = 0.0'	St = 0.0'
R = 0.0'	R = 0.0'	R = 0.0'	R = 0.0'
SE = 00	SE = 00	SE = 00	SE = 00
RO = 0	RO = 0	RO = 0	RO = 0

-LPC- HORIZONTAL CURVE DATA			
Pi Sta 16+81.0	Pi Sta 20+46.26	Pi Sta 22+31.46	Pi Sta 25+91.47
Os = 37.9' 11.0"	Os = 37.9' 11.0"	Os = 37.9' 11.0"	Os = 37.9' 11.0"
Ls = 180.0'	Ls = 180.0'	Ls = 180.0'	Ls = 180.0'
Ts = 257.0'	Ts = 257.0'	Ts = 257.0'	Ts = 257.0'
St = 64.0'	St = 64.0'	St = 64.0'	St = 64.0'
R = 300.0'	R = 300.0'	R = 300.0'	R = 300.0'
SE = 08	SE = 08	SE = 08	SE = 08
RO = 192	RO = 192	RO = 192	RO = 192

-SR2REV- HORIZONTAL CURVE DATA			
Pi Sta 11+06.91	Pi Sta 16+02.33	Pi Sta 20+24.75	Pi Sta 25+91.47
Os = 37.9' 11.0"	Os = 37.9' 11.0"	Os = 37.9' 11.0"	Os = 37.9' 11.0"
Ls = 180.0'	Ls = 180.0'	Ls = 180.0'	Ls = 180.0'
Ts = 257.0'	Ts = 257.0'	Ts = 257.0'	Ts = 257.0'
St = 64.0'	St = 64.0'	St = 64.0'	St = 64.0'
R = 300.0'	R = 300.0'	R = 300.0'	R = 300.0'
SE = 08	SE = 08	SE = 08	SE = 08
RO = 192	RO = 192	RO = 192	RO = 192

SEE SHEETS 19 & 20 FOR -L- PROFILE
SEE SHEET 33 FOR -RPC- PROFILE
SEE SHEET 33 FOR -LPC- PROFILE
SEE SHEET 32 FOR -RPA- PROFILE
SEE SHEET 32 FOR -RPB- PROFILE
SEE SHEET 40 FOR -SRI- PROFILE
SEE SHEET 41 FOR -SR2- PROFILE
SEE SHEET 43 FOR -DR-4- PROFILE
SEE SHEET 43 FOR -DR-5- PROFILE
SEE SHEETS S-1 THRU S-31 FOR STRUCTURE PLANS.
SEE SHEETS C-10 THRU C-20 FOR CULVERT PLANS.

REVISIONS

FILED \$
DATE \$



MATCHLINE -Y1- STA. 42+00 - SEE SHEET 18

MATCHLINE -L- STA. 30+00 - SEE SHEET 5