

NOTES

MATERIAL EXCAVATED FROM THE EXISTING BED SHALL BE STOCKPILED FOR USE IN THE PROPOSED CULVERT AND SHALL PROVIDE A CONTINUOUS LOW FLOW CHANNEL BETWEEN THE SILLS AS SHOWN. THE MATERIAL SHALL BE NATURAL STONE WITH A GRADATION SIZE SIMILAR TO THAT OF CLASS B RIP RAP. STONES LARGER THAN 6 INCHES SHALL NOT BE PLACED WITHIN THE LOW FLOW CHANNEL. BED MATERIAL SHALL BE SUBJECT TO APPROVAL BY THE ENGINEER.

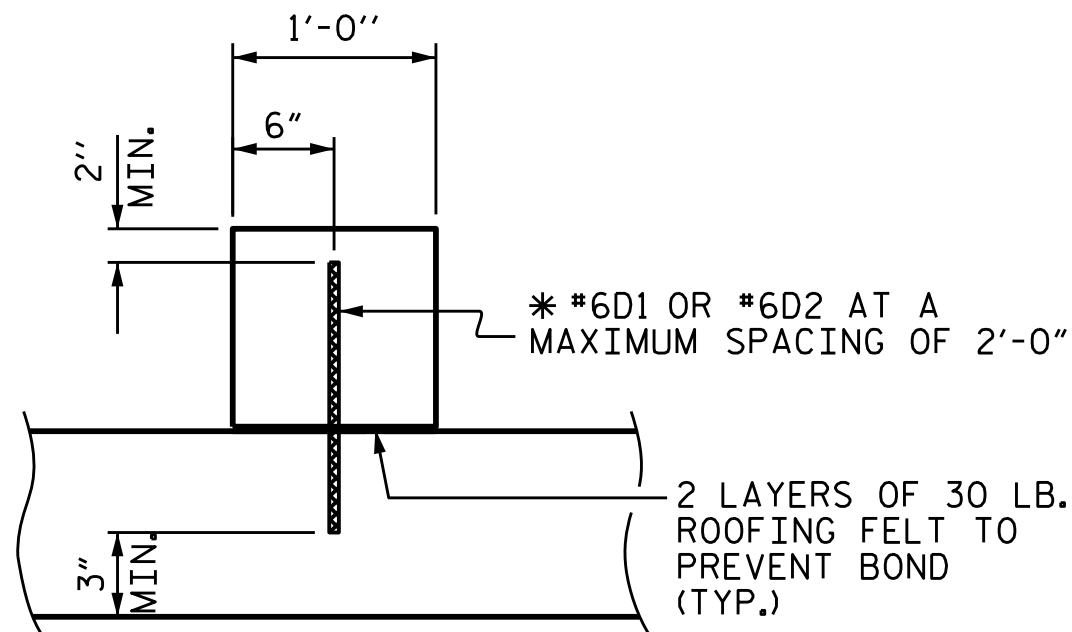
BED MATERIAL SHALL BE SUPPLEMENTED BY CLASS B RIP RAP AS NECESSARY.

THE TOP OF LOW FLOW SILLS SHOULD MATCH THE STREAM BED ELEVATION IN THE LOW FLOW CHANNEL OF THE STREAM.

THE ENTIRE COST OF WORK REQUIRED TO PLACE EXCAVATED MATERIAL OR SUPPLEMENTAL MATERIAL AS SHOWN ON THE PLANS SHALL BE INCLUDED IN THE CONTRACT LUMP SUM PRICE BID FOR CULVERT EXCAVATION.

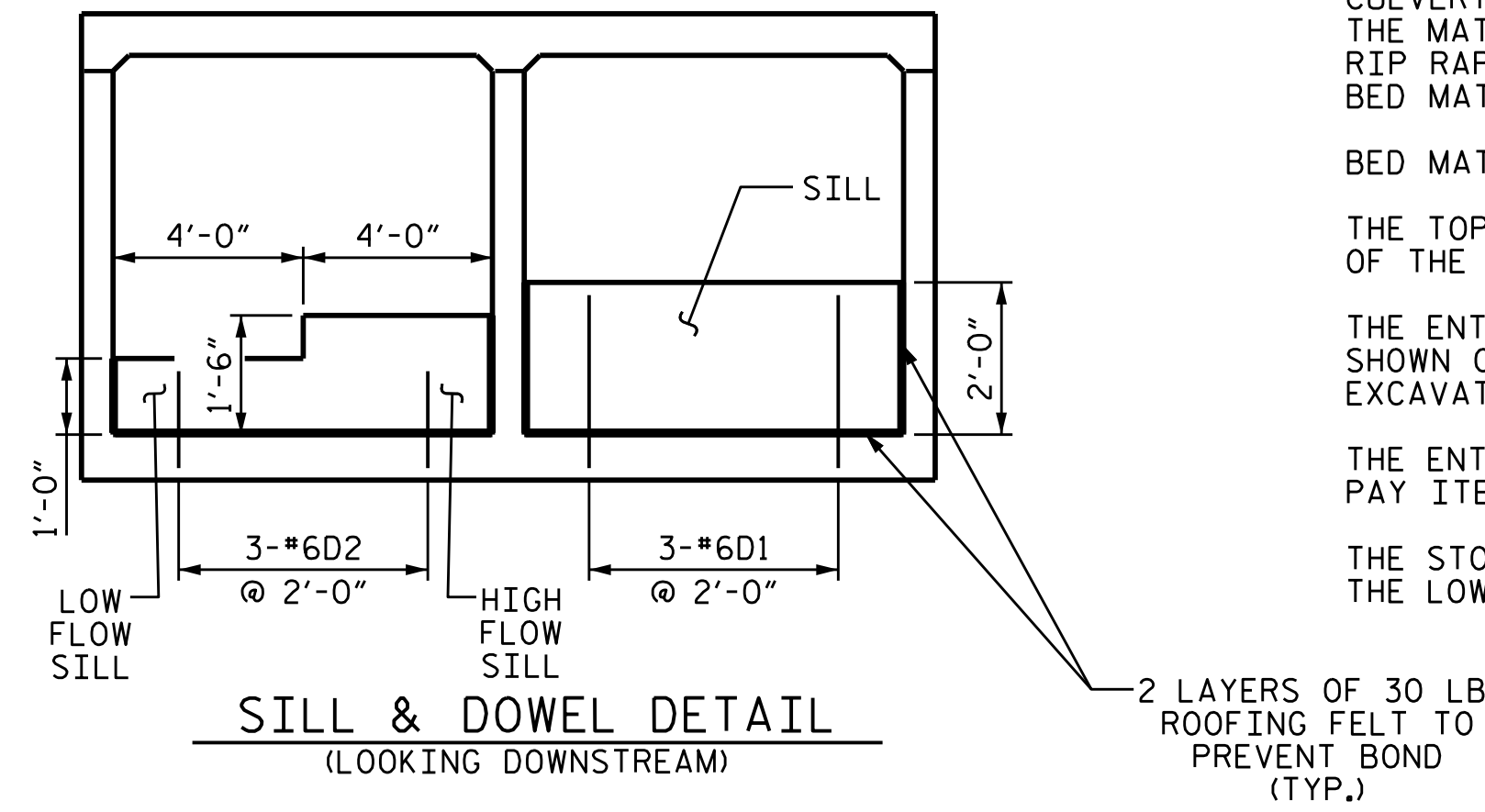
THE ENTIRE COST OF WORK REQUIRED TO CONSTRUCT THE SILLS SHALL BE INCLUDED IN THE VARIOUS PAY ITEMS.

THE STOCKPILED MATERIAL SHALL BE PLACED TO PROVIDE A 1 FOOT DEPTH LOW FLOW CHANNEL BETWEEN THE LOW FLOW SILLS, AND SHALL BE PLACED TO THE LEVEL OF 2'-0" BETWEEN THE HIGH FLOW SILLS.

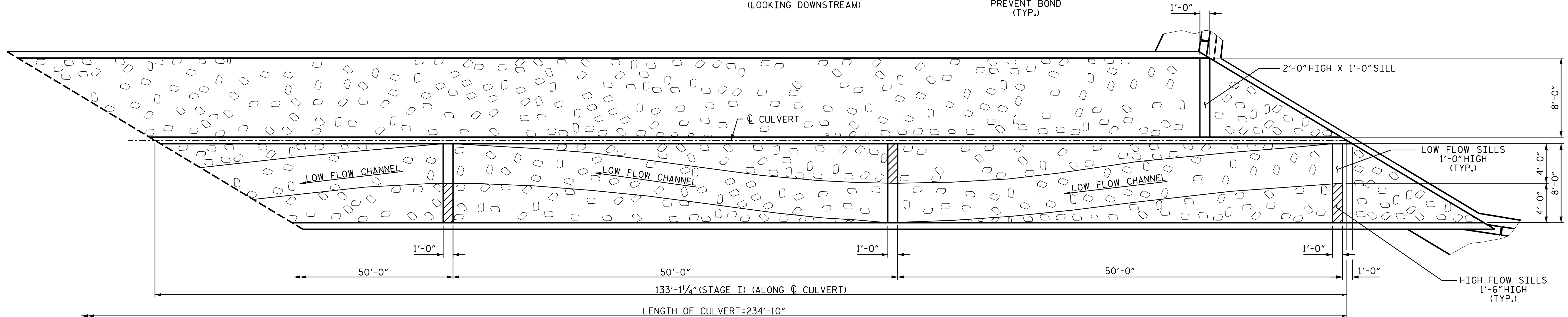


SECTION THROUGH SILL

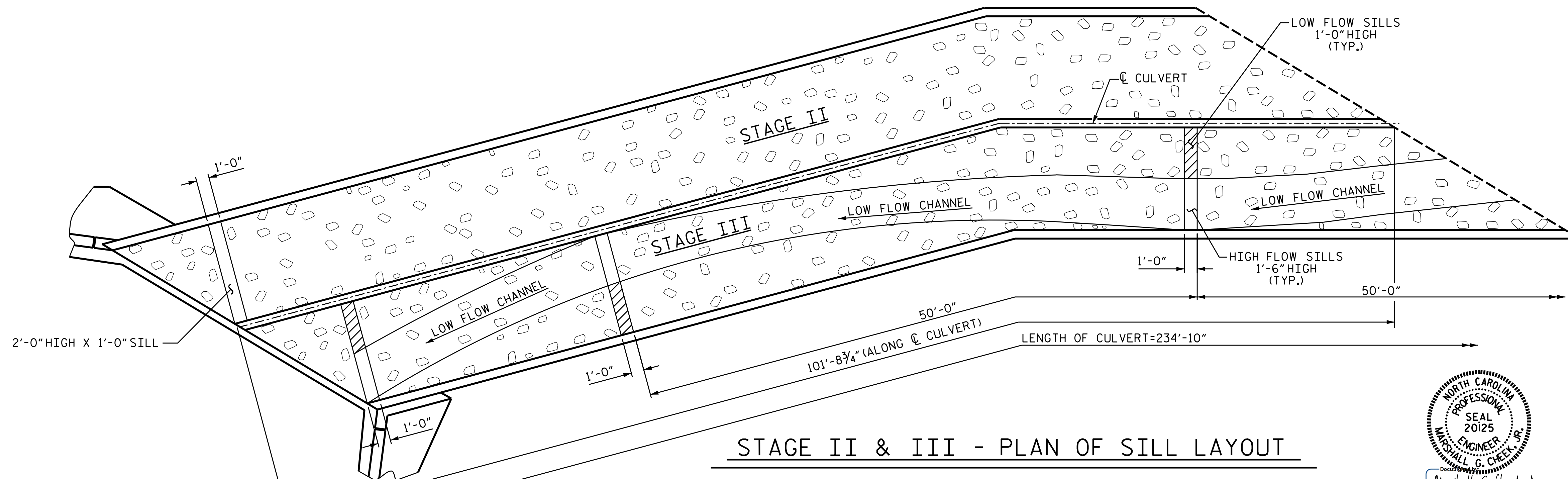
* DOWELS MAY BE PUSHED INTO GREEN CONCRETE AFTER SLAB HAS BEEN FLOAT FINISHED.



SILL & DOWEL DETAIL
(LOOKING DOWNSTREAM)



STAGE I - PLAN OF SILL LAYOUT

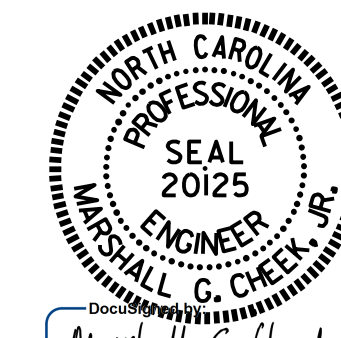


STAGE II & III - PLAN OF SILL LAYOUT

PROJECT NO. R-2915B
ASHE COUNTY
STATION: 161+48.90 -L-

SHEET 8 OF 13

STATE OF NORTH CAROLINA
DEPARTMENT OF TRANSPORTATION
RALEIGH
DOUBLE
8 FT. X 8 FT.
CONCRETE BOX CULVERT



Marshall G. Cheek, Jr.
7/22/2015

DRAWN BY: H. I. BARBOUR DATE: 4-29-14
CHECKED BY: S. B. WILLIAMS DATE: 5-14
DESIGN ENGINEER OF RECORD: B. A. DUKE DATE: 4-15

REVISIONS						SHEET NO.
NO.	BY:	DATE:	NO.	BY:	DATE:	C06-8
1			3			TOTAL SHEETS
2			4			13