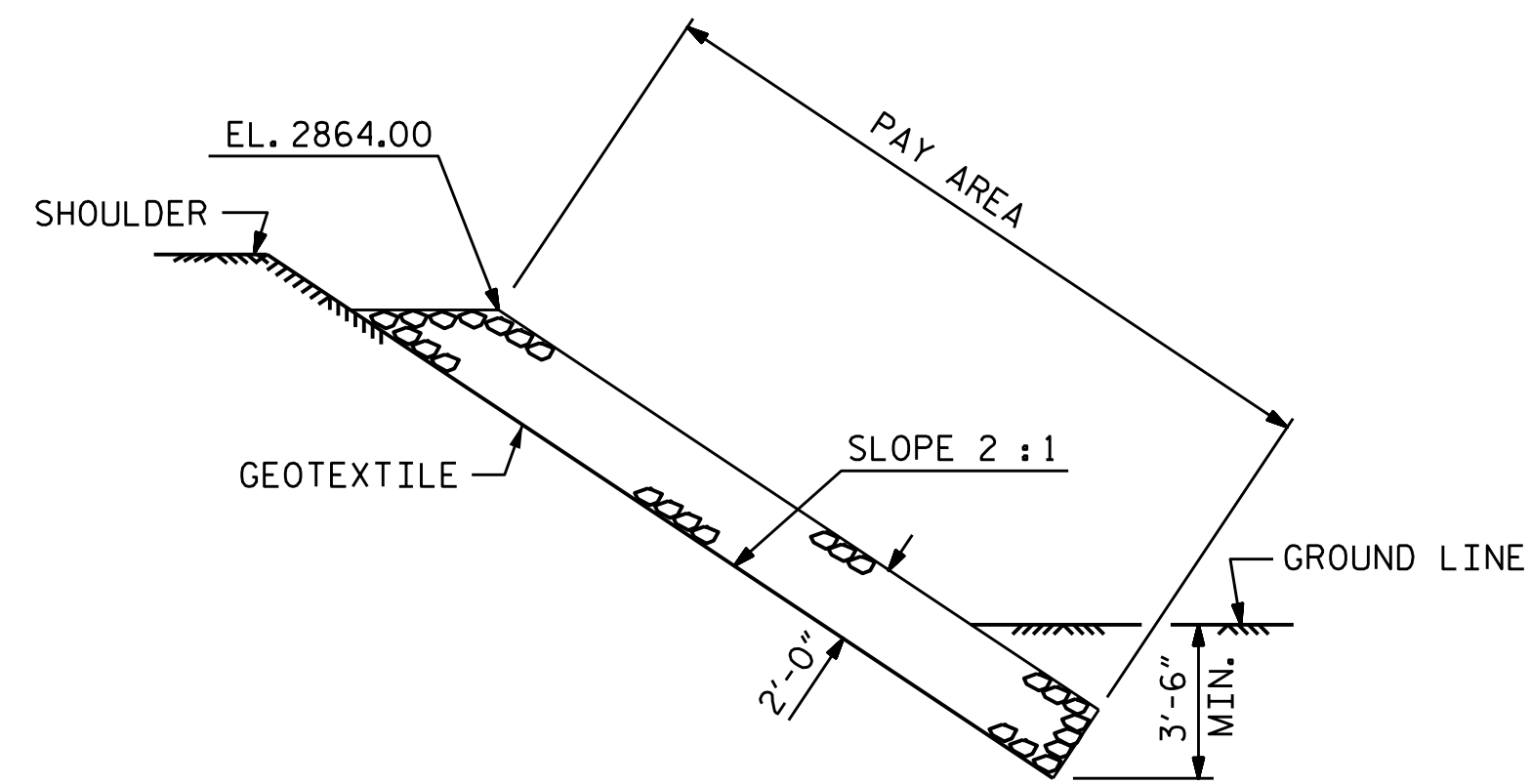


SECTION
BERM RIP RAPPED



SECTION C-C

ESTIMATED QUANTITIES		
BRIDGE @ STA. 242+67.42 -L-	RIp RAP CLASS II (2'-0" THICK)	GEOTEXTILE FOR DRAINAGE
	TONS	SQUARE YARDS
END BENT 1	77	85
END BENT 2	195	215

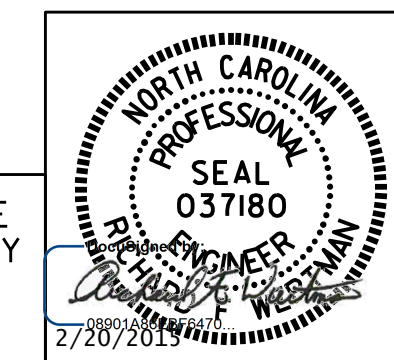
PROJECT NO. R-2915B
ASHE COUNTY
 STATION: 242+67.42 -L-

STATE OF NORTH CAROLINA
 DEPARTMENT OF TRANSPORTATION
 RALEIGH
 STANDARD
 RIP RAP DETAILS
 NBL

ASSEMBLED BY : T.J. KIRSCHBAUM DATE : 10/23/14
 CHECKED BY : R.F. WERTMAN DATE : 11/13/14
 DRAWN BY : REK 1/84 REV. 5/1/06R TLA/GM
 CHECKED BY : RDU 1/84 REV. 10/1/11 MAA/GM
 REV. 12/21/11 MAA/GM

PLANS PREPARED BY:
Gannett Fleming
 Excellence Delivered As Promised
 1121 Sittus Court
 Suite 170
 Raleigh NC 27606-4279
 (919) 859-4880
 NC Lic. No. F-0270

THESE PLANS HAVE BEEN PROPERLY EXAMINED BY THE UNDERSIGNED. I HAVE DETERMINED THAT THEY COMPLY WITH EXISTING NORTH CAROLINA CODES, AND HAVE BEEN PROPERLY ADAPTED FOR USE IN THIS AREA.



REVISIONS						SHEET NO.
NO.	BY:	DATE:	NO.	BY:	DATE:	TOTAL SHEETS
1			3			35
2			4			