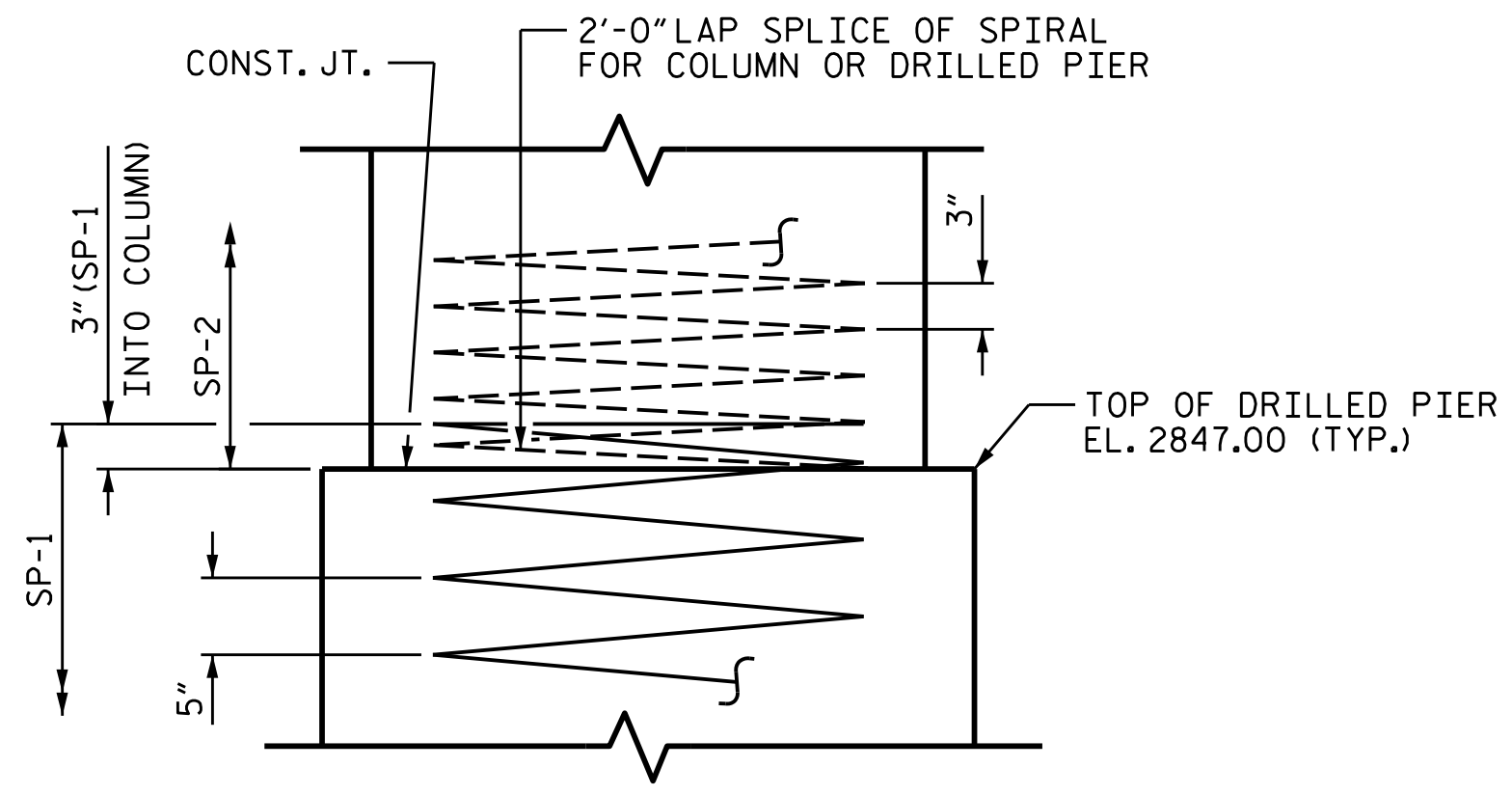
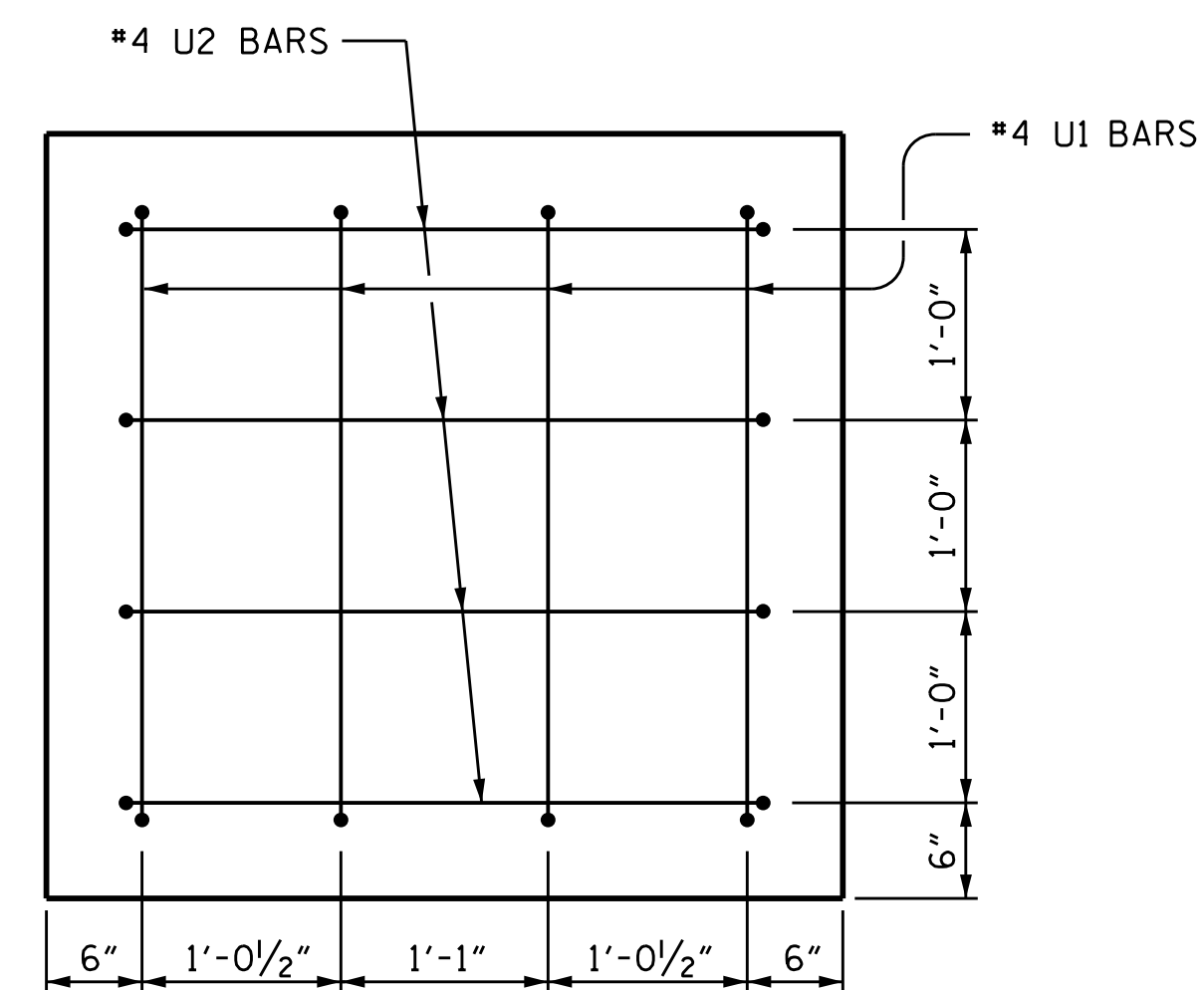
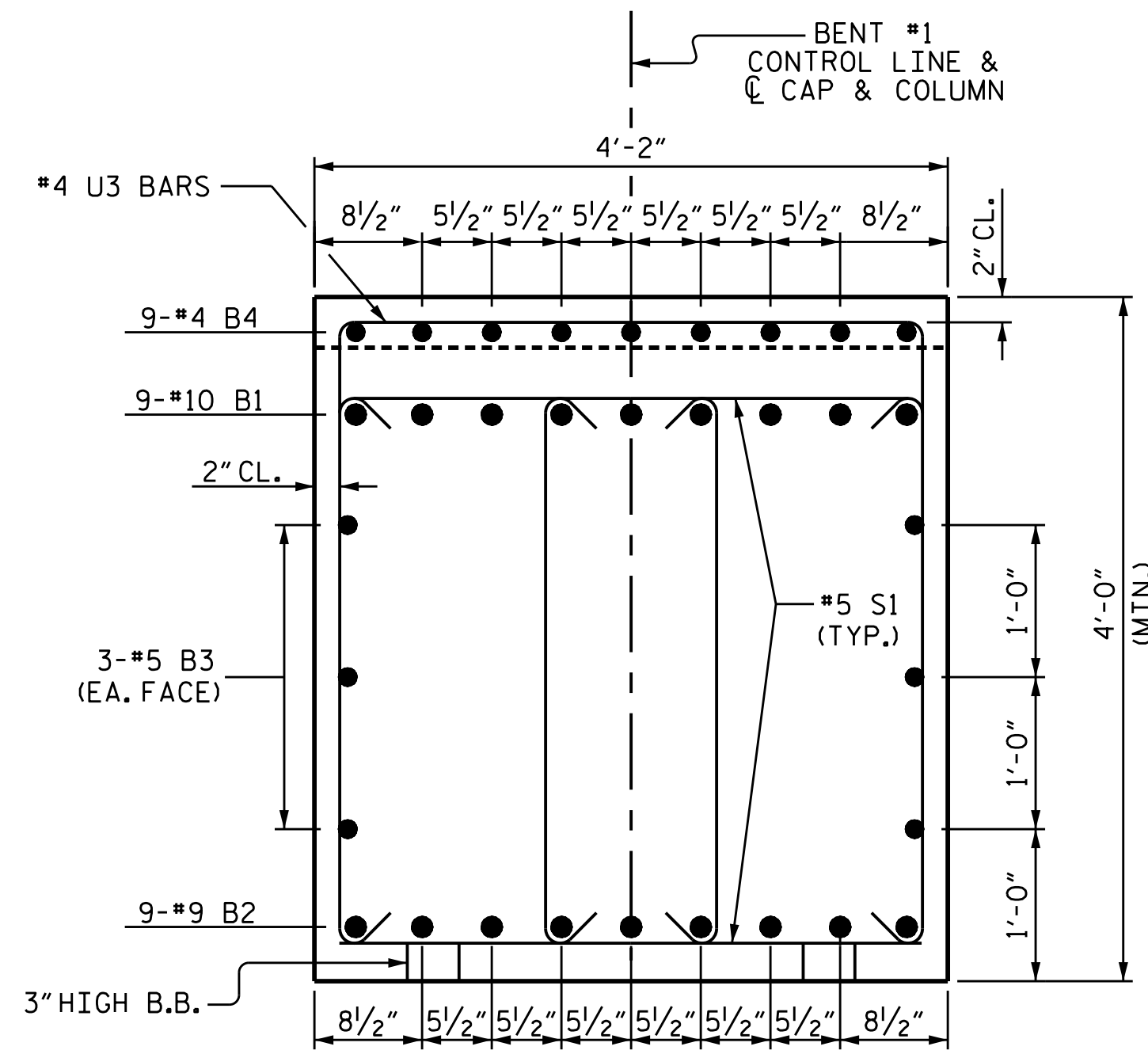


BILL OF MATERIAL					
BENT #1					
BAR	NO.	SIZE	TYPE	LENGTH	WEIGHT
B1	9	#10	1	39'-1"	1514
B2	9	#9	STR	36'-5"	1114
B3	6	#5	STR	36'-5"	228
B4	9	#4	STR	15'-3"	92
M1	18	#11	STR	36'-2"	3459
S1	96	#5	3	10'-8"	1068
U1	8	#4	4	6'-6"	35
U2	8	#4	4	6'-8"	36
U3	40	#4	4	6'-10"	183
V1	18	#11	2	18'-10"	1801
REINFORCING STEEL					9530 LBS.
SP-1	2	**	5	617'-0"	1287
SP-2	2	***	6	628'-7"	840
SPIRAL COLUMN REINFORCING STEEL					2127 LBS.
CLASS A CONCRETE BREAKDOWN					
POUR 2 (COLUMNS)					10.8 C.Y.
POUR 3 (CAPS)					24.3 C.Y.
TOTAL CLASS A CONCRETE					35.1 C.Y.
DRILLED PIER CONCRETE BREAKDOWN					
POUR 1 (DRILLED PIERS)					24.2 C.Y.
4'-0" Ø DRILLED PIER IN SOIL :					LINEAR FEET 20.0 FT.
4'-0" Ø DRILLED PIER NOT IN SOIL :					LINEAR FEET 32.0 FT.
PERMANENT STEEL CASING FOR 4'-0" Ø DRILLED PIERS:					10.0 FT.
CSL TUBES:					220.0 FT.



\*\* THE SP-1 SPIRAL REINFORCING STEEL SHALL BE W31 OR D-31 COLD DRAWN WIRE OR #5 PLAIN OR DEFORMED BAR.

\*\*\* THE SP-2 SPIRAL REINFORCING STEEL SHALL BE W20 OR D-20 COLD DRAWN WIRE OR #4 PLAIN OR DEFORMED BAR.

PROJECT NO. R-2915B  
 ASHE COUNTY  
 STATION: 242+67.42 -L-  
 SHEET 2 OF 2

STATE OF NORTH CAROLINA DEPARTMENT OF TRANSPORTATION RALEIGH					
SUBSTRUCTURE BENT #1 NBL					
REVISIONS					
NO.	BY:	DATE:	NO.	BY:	DATE:
1			3		
2			4		

SHEET NO. S05-27  
 TOTAL SHEETS 35

DRAWN BY : T.J. KIRSCHBAUM DATE : 10/21/14  
 CHECKED BY : R.F. WERTMAN DATE : 11/7/14  
 DESIGN ENGINEER OF RECORD : R.F. WERTMAN DATE : 11/7/14

PLANS PREPARED BY:  
**Gannett Fleming**  
 Excellence Delivered As Promised  
 1121 Situs Court  
 Suite 170  
 Raleigh NC 27606-4279  
 (919) 859-4880  
 N.C. Lic. No. F-0270

