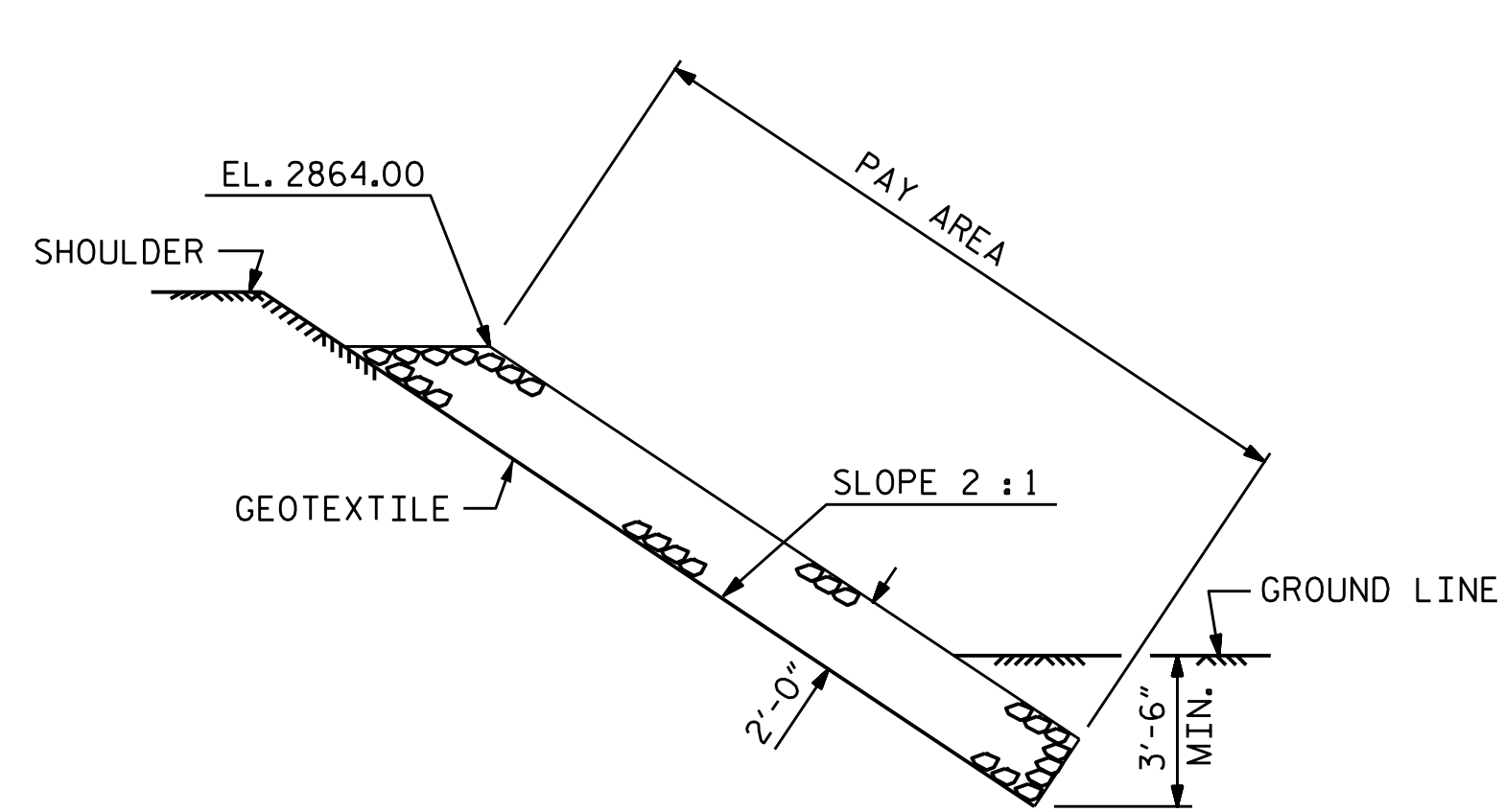


SECTION BERM RIP RAPPED



SECTION C-C

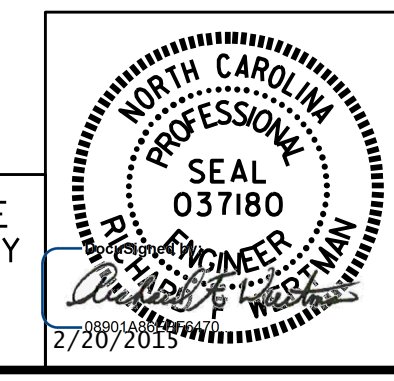
ESTIMATED QUANTITIES		
BRIDGE @ STA. 242+67.42 -L-	RIP RAP CLASS II (2'-0" THICK)	GEOTEXTILE FOR DRAINAGE
	TONS	SQUARE YARDS
END BENT 1	100	110
END BENT 2	176	195

PROJECT NO. R-2915B
ASHE COUNTY
 STATION: 242+67.42 -L-

ASSEMBLED BY : T.J. KIRSCHBAUM DATE : 09/05/14
 CHECKED BY : R.F. WERTMAN DATE : 11/13/14
 DRAWN BY : REK 1/84 REV. 5/1/06R TLA/GM
 CHECKED BY : RDU 1/84 REV. 10/1/11 MAA/GM
 REV. 12/21/11 MAA/GM

PLANS PREPARED BY:
Gannett Fleming
 Excellence Delivered As Promised
 1121 Sittus Court
 Suite 170
 Raleigh NC 27606-4279
 (919) 859-4880
 NC Lic. No. F-0270

THESE PLANS HAVE BEEN PROPERLY EXAMINED BY THE UNDERSIGNED. I HAVE DETERMINED THAT THEY COMPLY WITH EXISTING NORTH CAROLINA CODES, AND HAVE BEEN PROPERLY ADAPTED FOR USE IN THIS AREA.



STATE OF NORTH CAROLINA
 DEPARTMENT OF TRANSPORTATION
 RALEIGH
 STANDARD
—RIP RAP DETAILS—
 SBL

REVISIONS						SHEET NO.
NO.	BY:	DATE:	NO.	BY:	DATE:	TOTAL SHEETS
1			3			35
2			4			

STR. NO. 4 STD. NO. RR1