

FOUNDATION LAYOUT

DIMENSIONS LOCATING PILES ARE SHOWN TO PILE CENTERLINE.
 DIMENSIONS LOCATING DRILLED PIERS ARE SHOWN TO DRILLED PIER CENTERLINE.

NOTES:

FOR PILES, SEE SECTION 450 OF THE STANDARD SPECIFICATIONS.
 PILES AT END BENT NO.1 ARE DESIGNED FOR A FACTORED RESISTANCE OF 120 TONS PER PILE.
 DRIVE PILES AT END BENT NO.1 TO A REQUIRED DRIVING RESISTANCE OF 200 TONS PER PILE.
 FOR DRILLED PIERS, SEE SECTION 411 OF THE STANDARD SPECIFICATIONS.
 INSTALL DRILLED PIERS AT BENT NO.1 TO A TIP ELEVATION NO HIGHER THAN 2825.0 FT AND WITH THE REQUIRED TIP RESISTANCE.
 DRILLED PIERS AT BENT NO.1 ARE DESIGNED FOR A FACTORED RESISTANCE OF 590 TONS PER PIER. CHECK FIELD CONDITIONS FOR THE REQUIRED TIP RESISTANCE OF 30.0 TSF.
 PERMANENT STEEL CASING WILL BE REQUIRED FOR DRILLED PIERS AT BENT NO.1. DO NOT EXTEND PERMANENT CASINGS BELOW ELEVATION 2839.0 FT. WITHOUT PRIOR APPROVAL FROM THE ENGINEER.
 THE SCOUR CRITICAL ELEVATION FOR BENT NO.1 IS ELEVATION 2836.0 FT. THE SCOUR CRITICAL ELEVATIONS ARE USED TO MONITOR POSSIBLE SCOUR PROBLEMS DURING THE LIFE OF THE STRUCTURE.

INSTALL DRILLED PIERS AT BENT NO.2 TO A TIP ELEVATION NO HIGHER THAN 2820.4 FT (LT) AND 2815.4 FT (RT) AND WITH THE REQUIRED TIP RESISTANCE.
 DRILLED PIERS AT BENT NO.2 ARE DESIGNED FOR A FACTORED RESISTANCE OF 680 TONS PER PIER. CHECK FIELD CONDITIONS FOR THE REQUIRED TIP RESISTANCE OF 30.0 TSF.
 PERMANENT STEEL CASING WILL BE REQUIRED FOR DRILLED PIERS AT BENT NO.2. DO NOT EXTEND CASING BELOW ELEVATION 2842.0 FT. WITHOUT PRIOR APPROVAL FROM THE ENGINEER.
 THE SCOUR CRITICAL ELEVATION FOR BENT NO.2 IS ELEVATION 2836.0 FT. THE SCOUR CRITICAL ELEVATIONS ARE USED TO MONITOR POSSIBLE SCOUR PROBLEMS DURING THE LIFE OF THE STRUCTURE.
 CSL TUBES ARE REQUIRED AND CSL TESTING MAY BE REQUIRED FOR THE DRILLED PIERS AT BENT NO.1 AND BENT NO.2. THE ENGINEER WILL DETERMINE THE NEED FOR CSL TESTING. FOR CSL TESTING, SEE SECTION 411 OF THE STANDARD SPECIFICATIONS.
 PILES AT END BENT NO.2 ARE DESIGNED FOR A FACTORED RESISTANCE OF 120 TONS PER PILE.
 DRIVE PILES AT END BENT NO.2 TO A REQUIRED DRIVING RESISTANCE OF 200 TONS PER PILE.

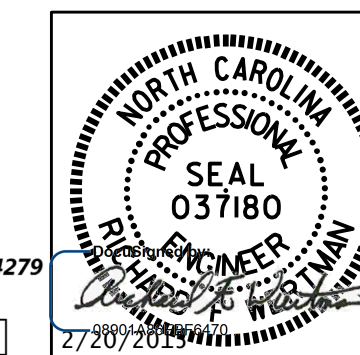
PROJECT NO. R-2915B
ASHE COUNTY
 STATION: 242+67.42 -L-

SHEET 2 OF 3

STATE OF NORTH CAROLINA
 DEPARTMENT OF TRANSPORTATION
 RALEIGH
GENERAL DRAWING
 BRIDGE OVER SOUTH
 FORK NEW RIVER ON
 US 221 BETWEEN
 SR 1103 AND SR 1169
 SBL

DRAWN BY : T.J. KIRSCHBAUM DATE : 10/28/14
 CHECKED BY : R.F. WERTMAN DATE : 11/12/14
 DESIGN ENGINEER OF RECORD : R.F. WERTMAN DATE : 11/12/14

PLANS PREPARED BY:
Gannett Fleming
 Excellence Delivered As Promised
 1121 Situs Court
 Suite 170
 Raleigh NC 27606-4279
 (919) 859-4880
 NCLic. No. F-0270



REVISIONS						SHEET NO.
NO.	BY:	DATE:	NO.	BY:	DATE:	S04-2
1			3			TOTAL SHEETS
2			4			35