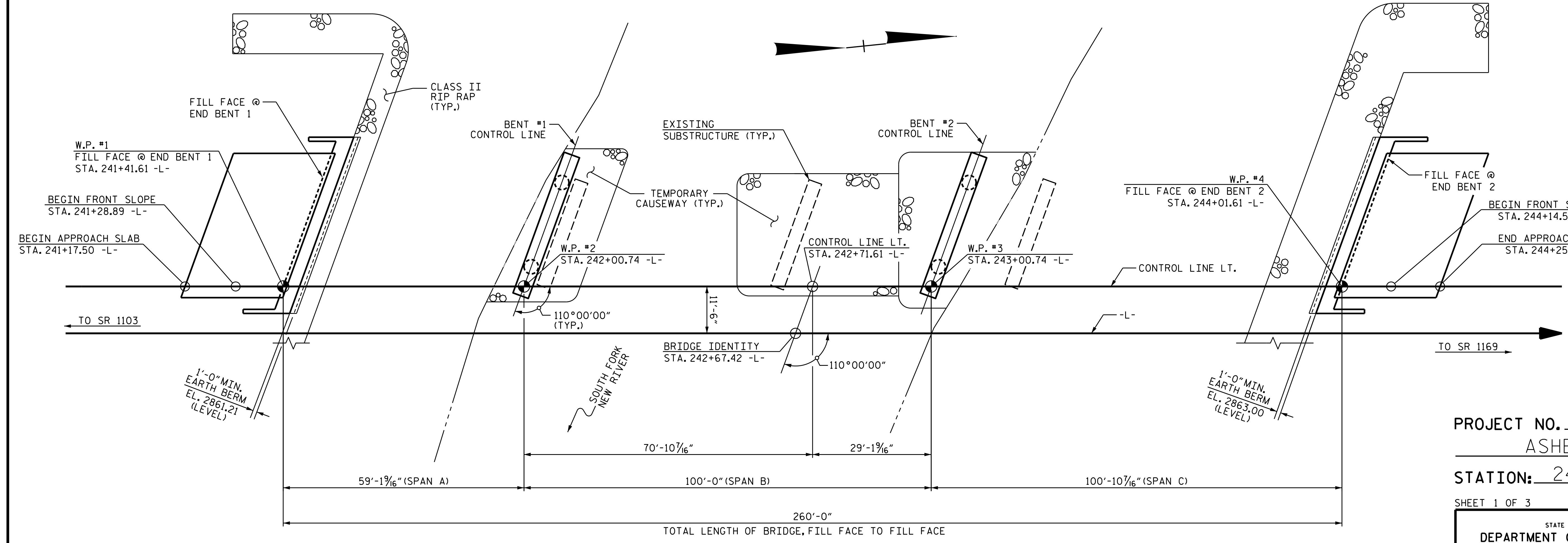


0.3000% Δ 1.6600%
 P. I. STA. = 247+50.00 -L-
 EL. = 2,874.38
 V. C. = 1,025'
GRADE DATA -L-

I HEREBY CERTIFY THESE PLANS ARE THE AS-BUILT PLANS

SECTION ALONG CONTROL LINE LT.
 (SECTION AT BENTS & END BENTS ARE AT RIGHT ANGLES)

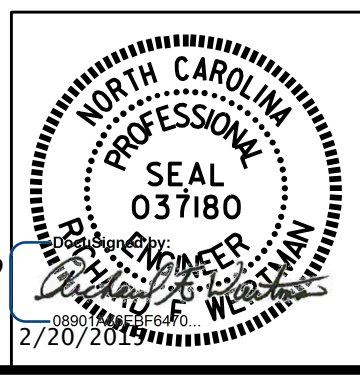


PROJECT NO. R-2915B
ASHE COUNTY
 STATION: 242+67.42 -L-
 SHEET 1 OF 3 REPLACES BRIDGE #10

STATE OF NORTH CAROLINA
 DEPARTMENT OF TRANSPORTATION
 RALEIGH
GENERAL DRAWING
 BRIDGE OVER SOUTH FORK NEW RIVER ON US 221 BETWEEN SR 1103 AND SR 1169 SBL

DRAWN BY : T.J. KIRSCHBAUM DATE : 4/21/14
 CHECKED BY : R.F. WERTMAN DATE : 7/31/14
 DESIGN ENGINEER OF RECORD : R.F. WERTMAN DATE : 10/3/14

PLANS PREPARED BY:
Gannett Fleming
 Excellence Delivered As Promised



REVISIONS						SHEET NO.
NO.	BY:	DATE:	NO.	BY:	DATE:	S04-1
1			3			TOTAL SHEETS
2			4			35