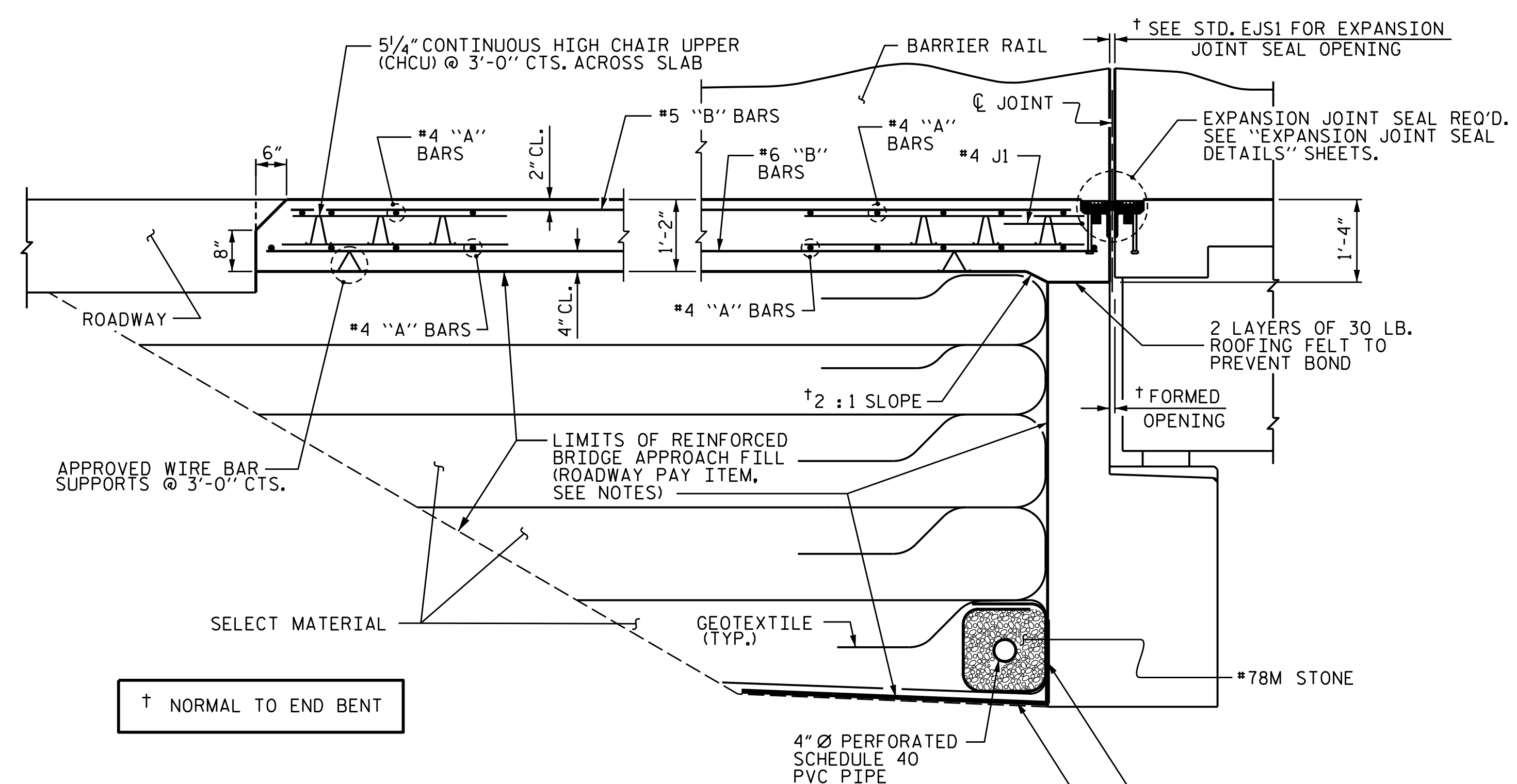


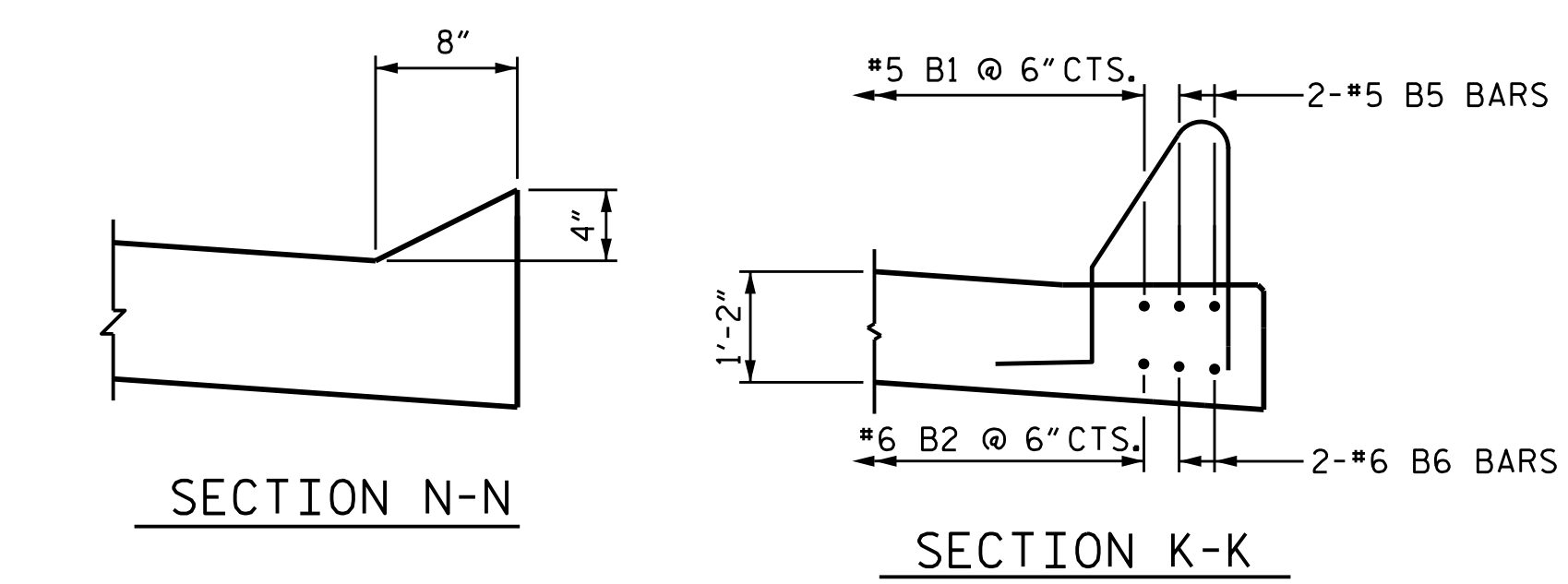
PLAN @ END BENT #1

PLAN @ END BENT #2

DIMENSIONS SHOWN ARE TYPICAL FOR BOTH APPROACH SLABS

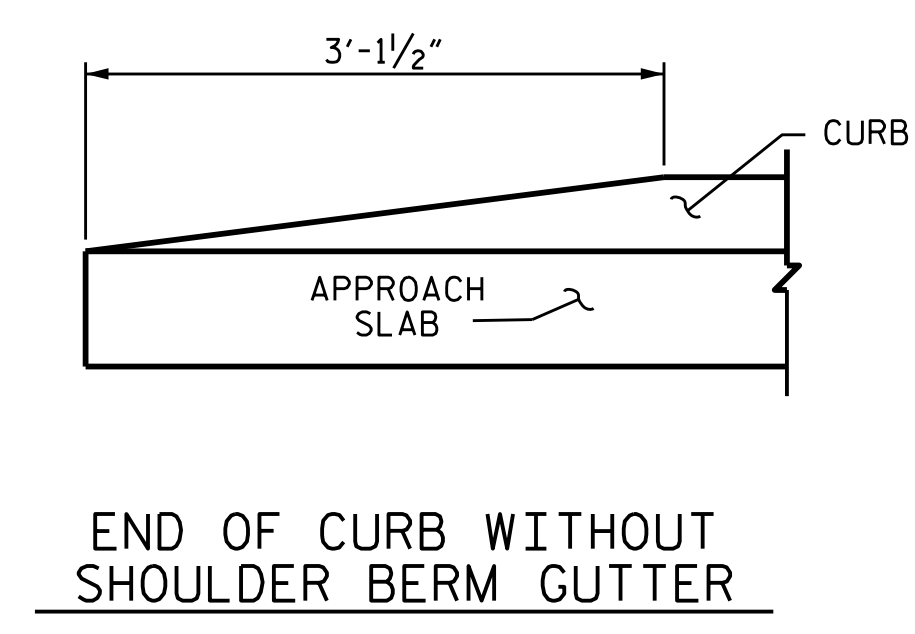


SECTION THRU SLAB



SECTION N-N

SECTION K-K



CURB DETAILS

NOTES

APPROACH SLAB SHALL NOT BE CONSTRUCTED PRIOR TO COMPLETION OF THE BRIDGE DECK.

FOR REINFORCED BRIDGE APPROACH FILL INCLUDING GEOTEXTILE, IMPERMEABLE GEOMEMBRANE, 4" Ø DRAINAGE PIPE, #78M STONE, AND SELECT MATERIAL, SEE ROADWAY PLANS.

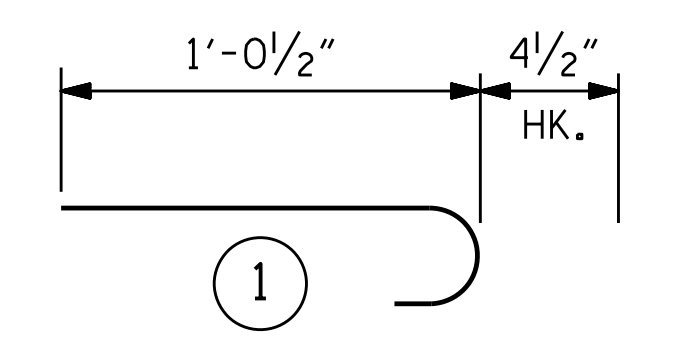
AREA BETWEEN THE WINGWALL AND APPROACH SLAB SHALL BE GRADED TO DRAIN THE WATER AWAY FROM THE FILL FACE OF THE BRIDGE AND SHALL BE PAVED. SEE ROADWAY PLANS.

FOR EXPANSION JOINT SEALS, SEE SPECIAL PROVISIONS.

SPLICE LENGTHS CHART

BAR SIZE	EPOXY COATED	UNCOATED
#4	2'-0"	1'-9"
#5	2'-6"	2'-2"
#6	3'-10"	2'-7"

BAR TYPES



ALL BAR DIMENSION ARE OUT TO OUT

BILL OF MATERIAL

APPROACH SLAB AT EB #1					
BAR	NO.	SIZE	TYPE	LENGTH	WEIGHT
*A1	50	#4	STR	25'-9"	86Q
A2	52	#4	STR	25'-8"	892
*B1	71	#5	STR	23'-9"	1759
B2	71	#6	STR	24'-8"	2631
*B3	2	#5	STR	10'-4"	22
B4	2	#6	STR	10'-4"	31
*B5	2	#5	STR	9'-10"	21
B6	2	#6	STR	9'-10"	3Q
*J1	47	#4	1	1'-5"	44
REINFORCING STEEL				LBS.	3584
*EPOXY COATED REINFORCING STEEL				LBS.	2706
CLASS AA CONCRETE				C. Y.	39.3
APPROACH SLAB AT EB #2					
BAR	NO.	SIZE	TYPE	LENGTH	WEIGHT
*A1	50	#4	STR	25'-9"	86Q
A2	52	#4	STR	25'-8"	892
*B1	71	#5	STR	23'-9"	1759
B2	71	#6	STR	24'-8"	2631
*B3	2	#5	STR	10'-4"	22
B4	2	#6	STR	10'-4"	31
*B5	2	#5	STR	9'-10"	21
B6	2	#6	STR	9'-10"	3Q
*J1	47	#4	1	1'-5"	44
REINFORCING STEEL				LBS.	3584
*EPOXY COATED REINFORCING STEEL				LBS.	2706
CLASS AA CONCRETE				C. Y.	39.3

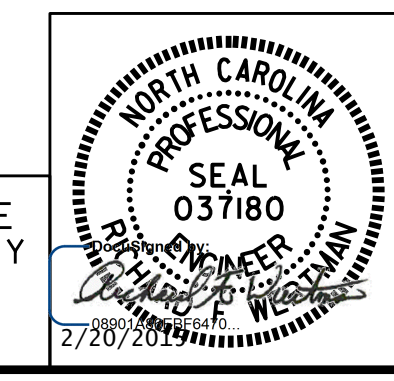
PROJECT NO. R-2915B
 ASHE COUNTY
 STATION: 234+19.20 -L-
 SHEET 1 OF 2

STATE OF NORTH CAROLINA
 DEPARTMENT OF TRANSPORTATION
 RALEIGH
 STANDARD
 BRIDGE APPROACH SLAB
 FOR FLEXIBLE PAVEMENT
 NBL

ASSEMBLED BY : T.J. KIRSCHBAUM	DATE : 09/05/14
CHECKED BY : R.F. WERTMAN	DATE : 09/05/14
DRAWN BY : EEM 3/95	REV. 5/1/06RR KMM/GM
CHECKED BY : VAP 3/95	REV. 10/1/11 MAA/GM
	REV. 12/21/11 MAA/GM

PLANS PREPARED BY:
Gannett Fleming
 Excellence Delivered As Promised
 1121 Situs Court
 Suite 170
 Raleigh NC 27606-4279
 (919) 859-4880
 NC Lic. No. F-0270

THESE PLANS HAVE BEEN PROPERLY EXAMINED BY THE UNDERSIGNED. I HAVE DETERMINED THAT THEY COMPLY WITH EXISTING NORTH CAROLINA CODES, AND HAVE BEEN PROPERLY ADAPTED FOR USE IN THIS AREA.



REVISIONS					
NO.	BY:	DATE:	NO.	BY:	DATE:
1			3		
2			4		

SHEET NO.	S03-29
TOTAL SHEETS	30