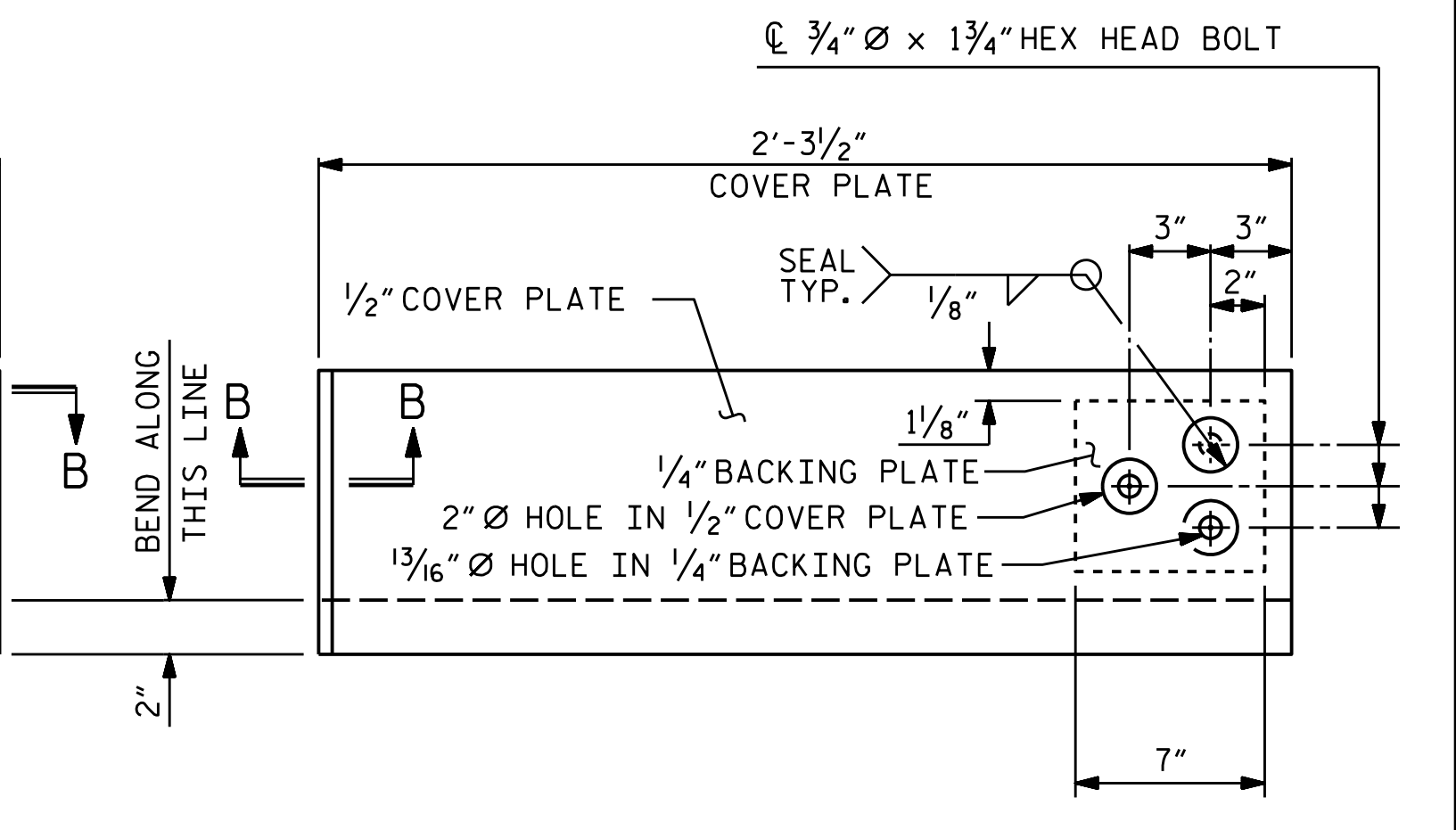
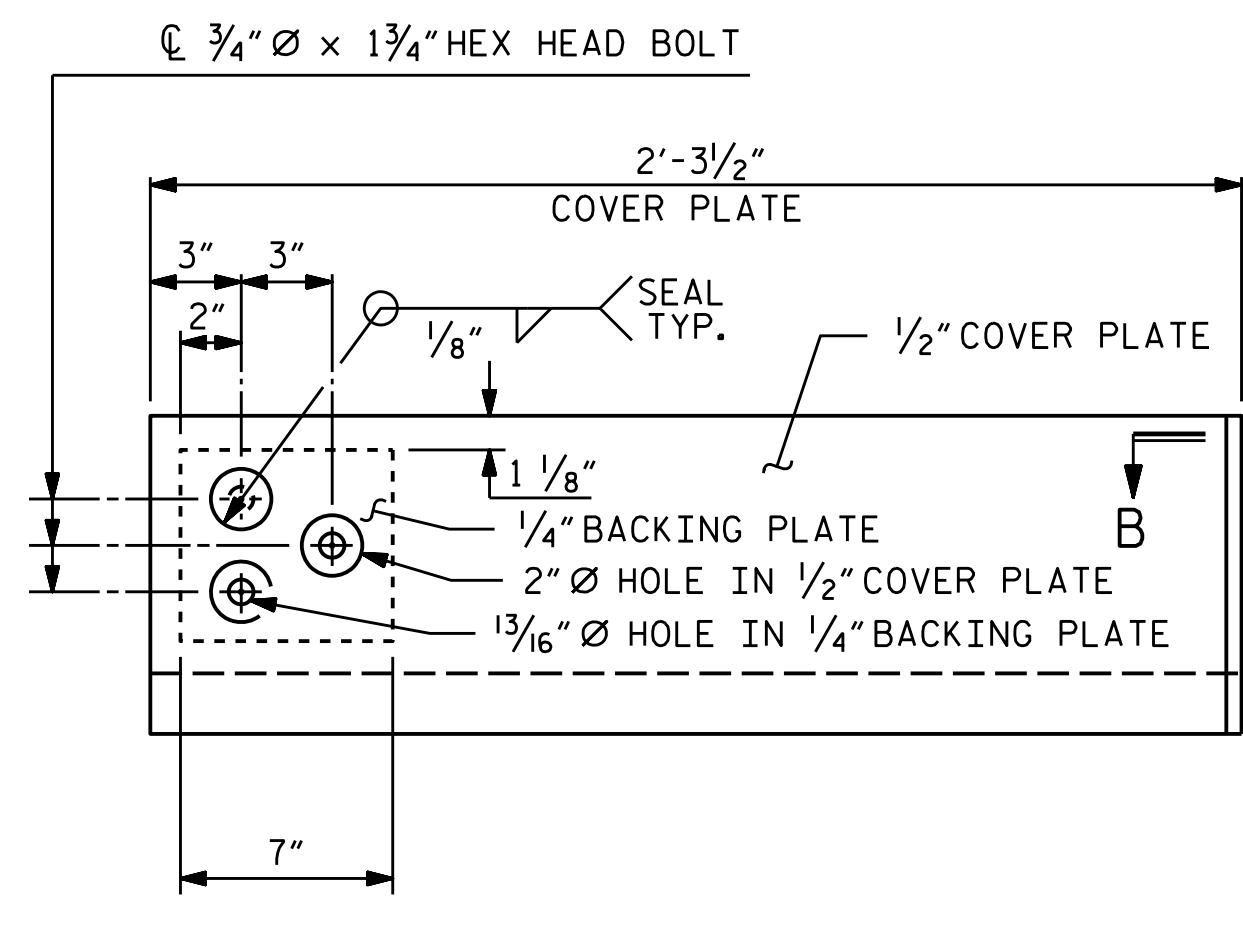
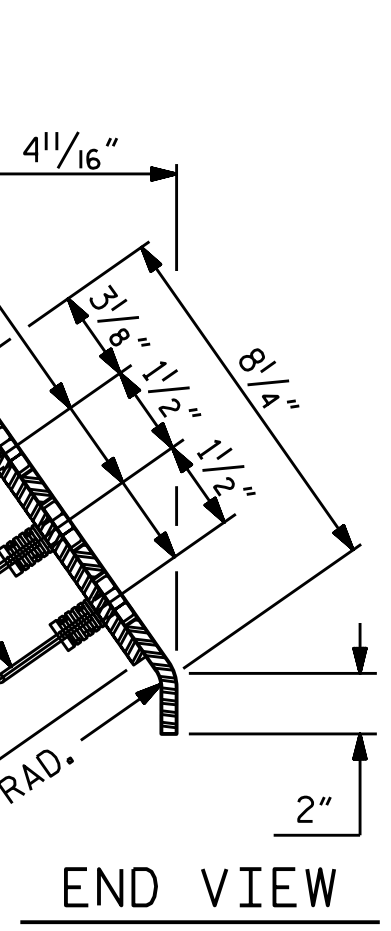


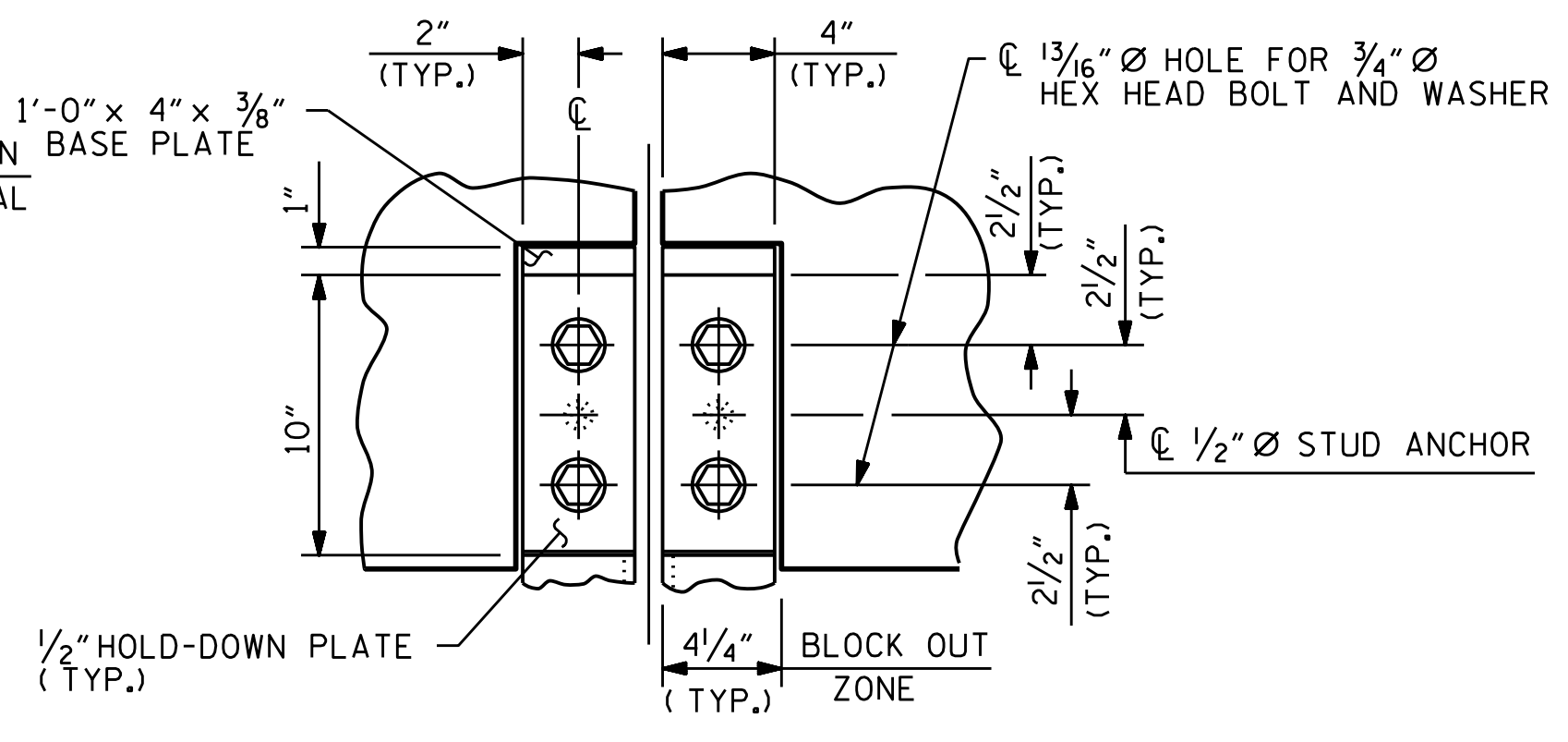
**SECTION THRU RAIL NORMAL TO JOINT**



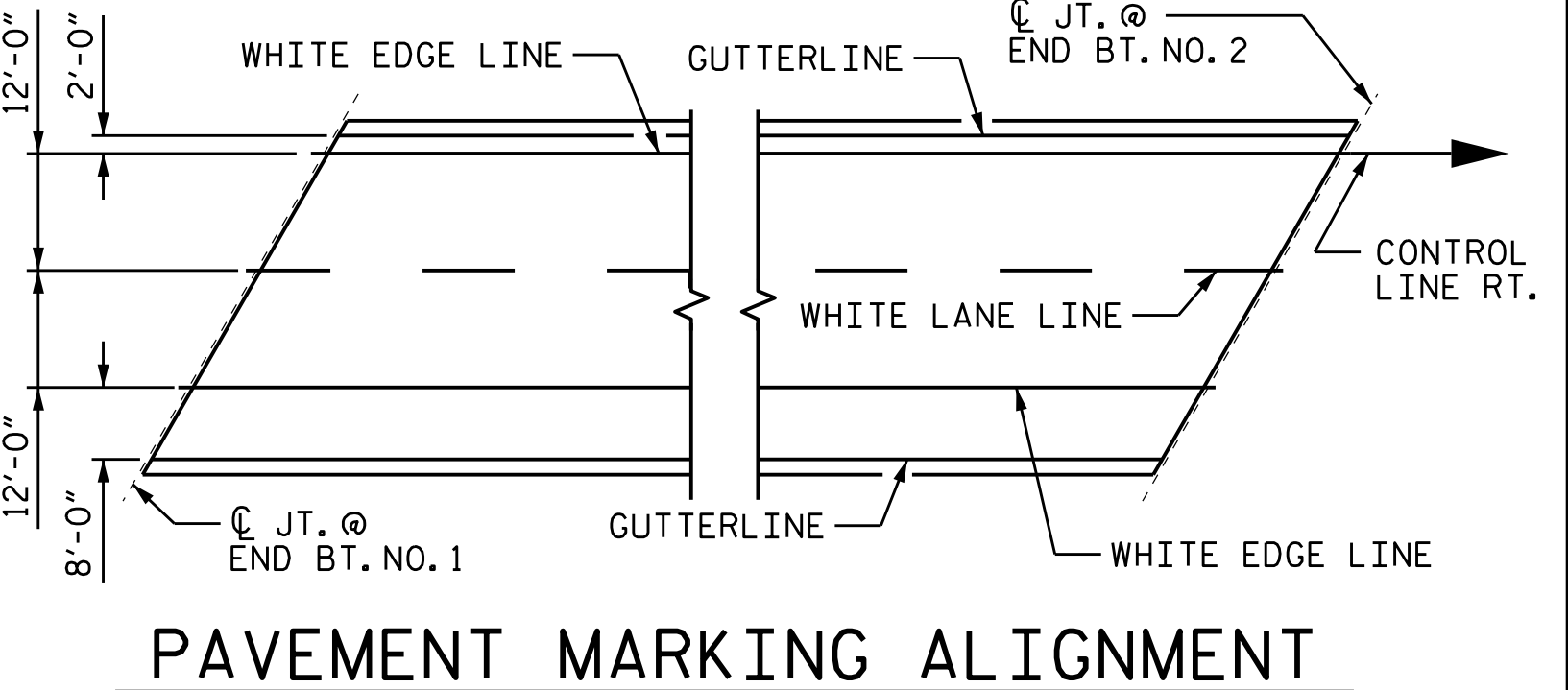
**TYPE I - ELEVATION VIEW**

**TYPE II - ELEVATION VIEW**

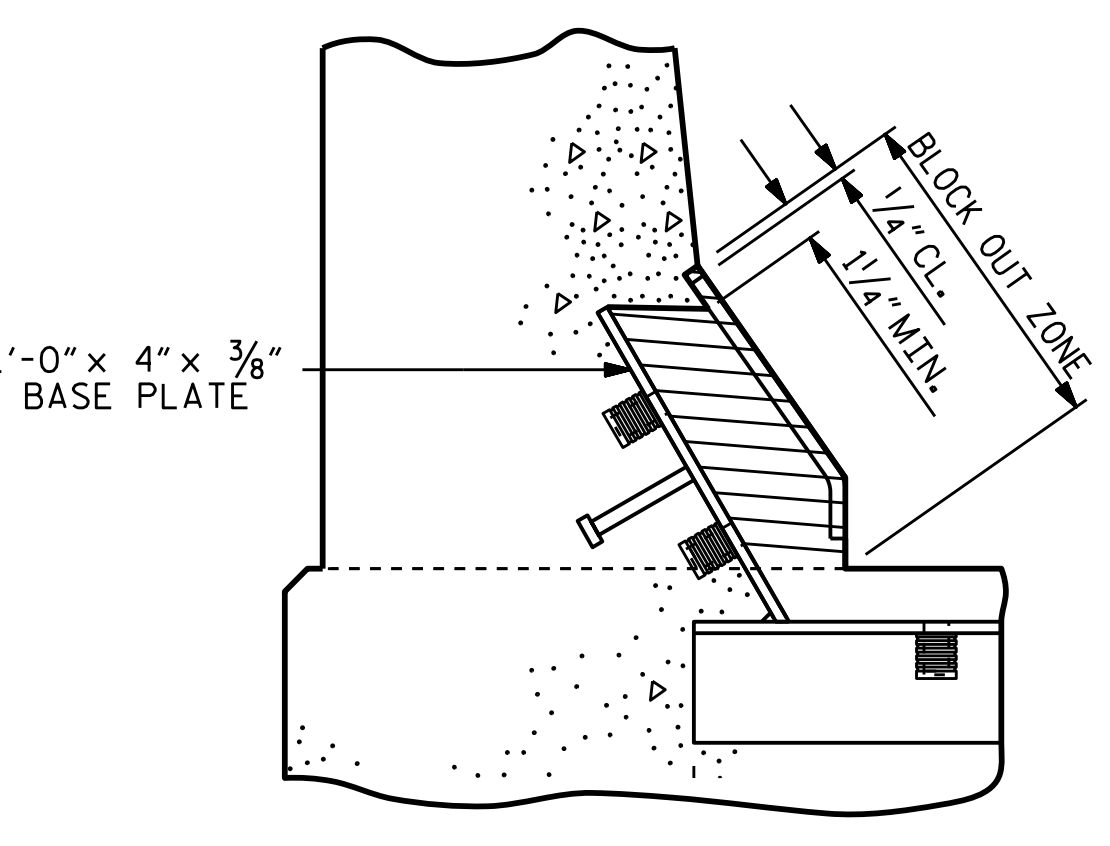
**COVER PLATE DETAILS**



**SECTION A - A**

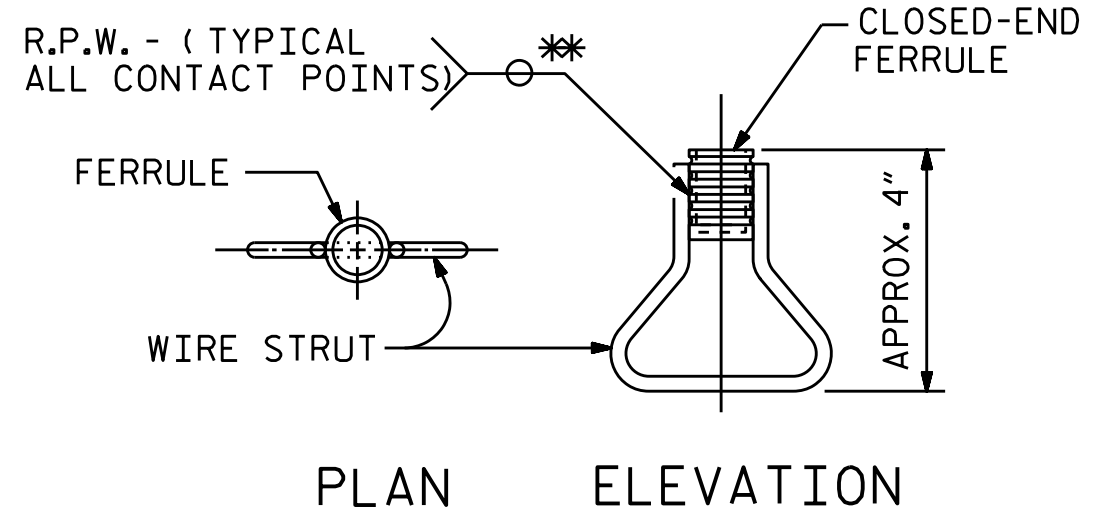


**PAVEMENT MARKING ALIGNMENT**



**BLOCK OUT DETAIL**

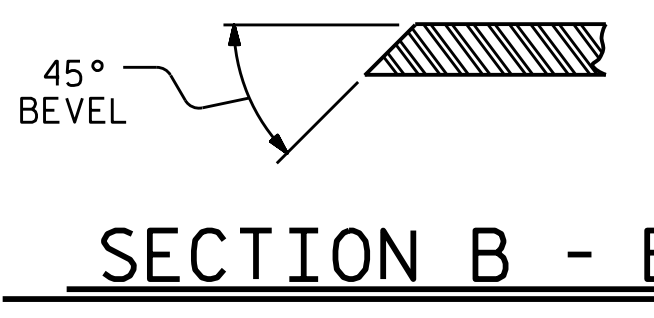
SEE "SECTION A-A" FOR OTHER DETAILS.



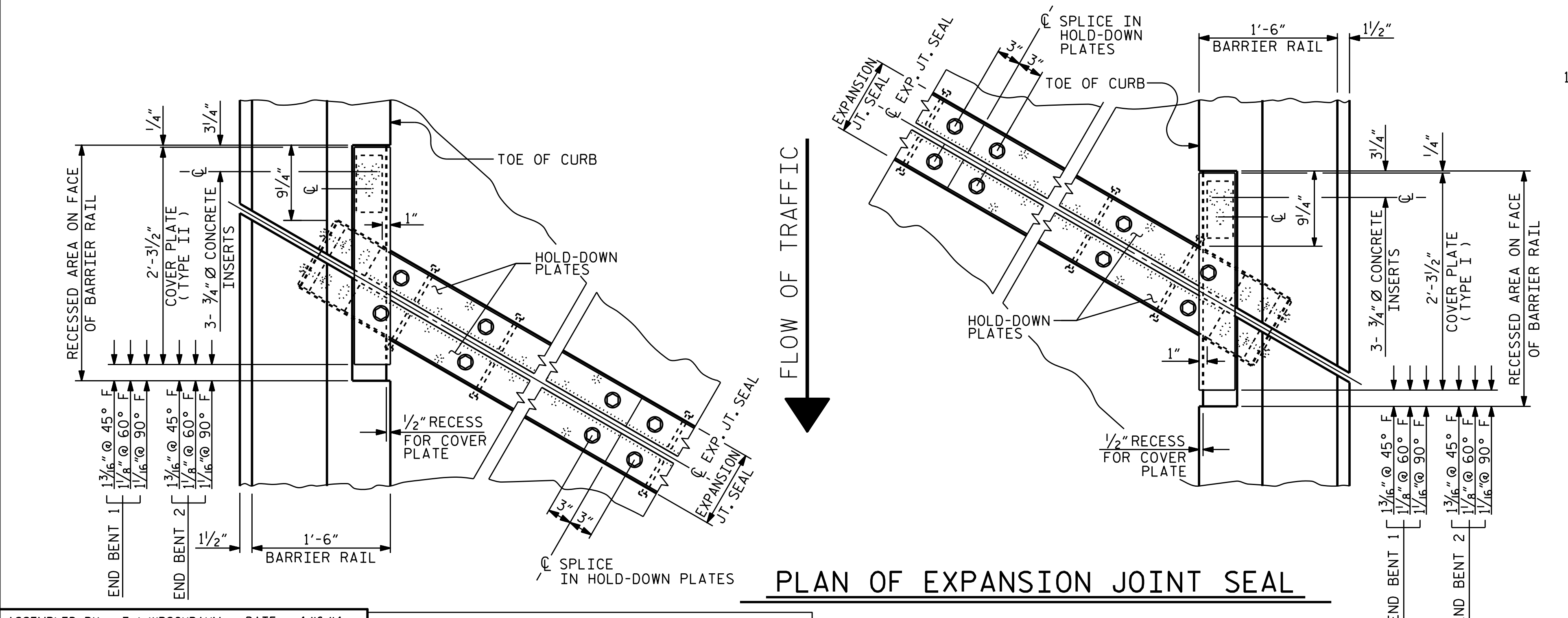
**PLAN ELEVATION**

**CONCRETE INSERT**

\*\* EACH WELDED ATTACHMENT OF WIRE TO FERRULE SHALL DEVELOP THE TENSILE STRENGTH OF THE WIRE.



**SECTION B - B**



**PLAN OF EXPANSION JOINT SEAL**



PROJECT NO. R-2915B  
ASHE COUNTY  
 STATION: 234+19.20 -L-

SHEET 2 OF 2

STATE OF NORTH CAROLINA  
 DEPARTMENT OF TRANSPORTATION  
 RALEIGH  
 STANDARD  
 EXPANSION JOINT  
 SEAL DETAILS  
 FOR BARRIER RAIL  
 NBL

REVISIONS				SHEET NO.	
NO.	BY:	DATE:	NO.	BY:	DATE:
1			3		
2			4		

TOTAL SHEETS: 30

ASSEMBLED BY: T.J. KIRSCHBAUM DATE: 4/16/14  
 CHECKED BY: R.F. WERTMAN DATE: 5/1/14  
 DRAWN BY: REK 9/87 REV. 10/1/11 MAA/GM  
 CHECKED BY: CRK 10/87 REV. 7/12 MAA/GM  
 REV. 10/12 MAA/GM

THESE PLANS HAVE BEEN PROPERLY EXAMINED BY THE UNDERSIGNED. I HAVE DETERMINED THAT THEY COMPLY WITH EXISTING NORTH CAROLINA CODES, AND HAVE BEEN PROPERLY ADAPTED FOR USE IN THIS AREA.

PLANS PREPARED BY:  
**Gannett Fleming**  
 Excellence Delivered As Promised  
 1121 Sittus Court  
 Suite 170  
 Raleigh, NC 27606-4279  
 (919) 859-4880  
 NC Lic. No. F-0270