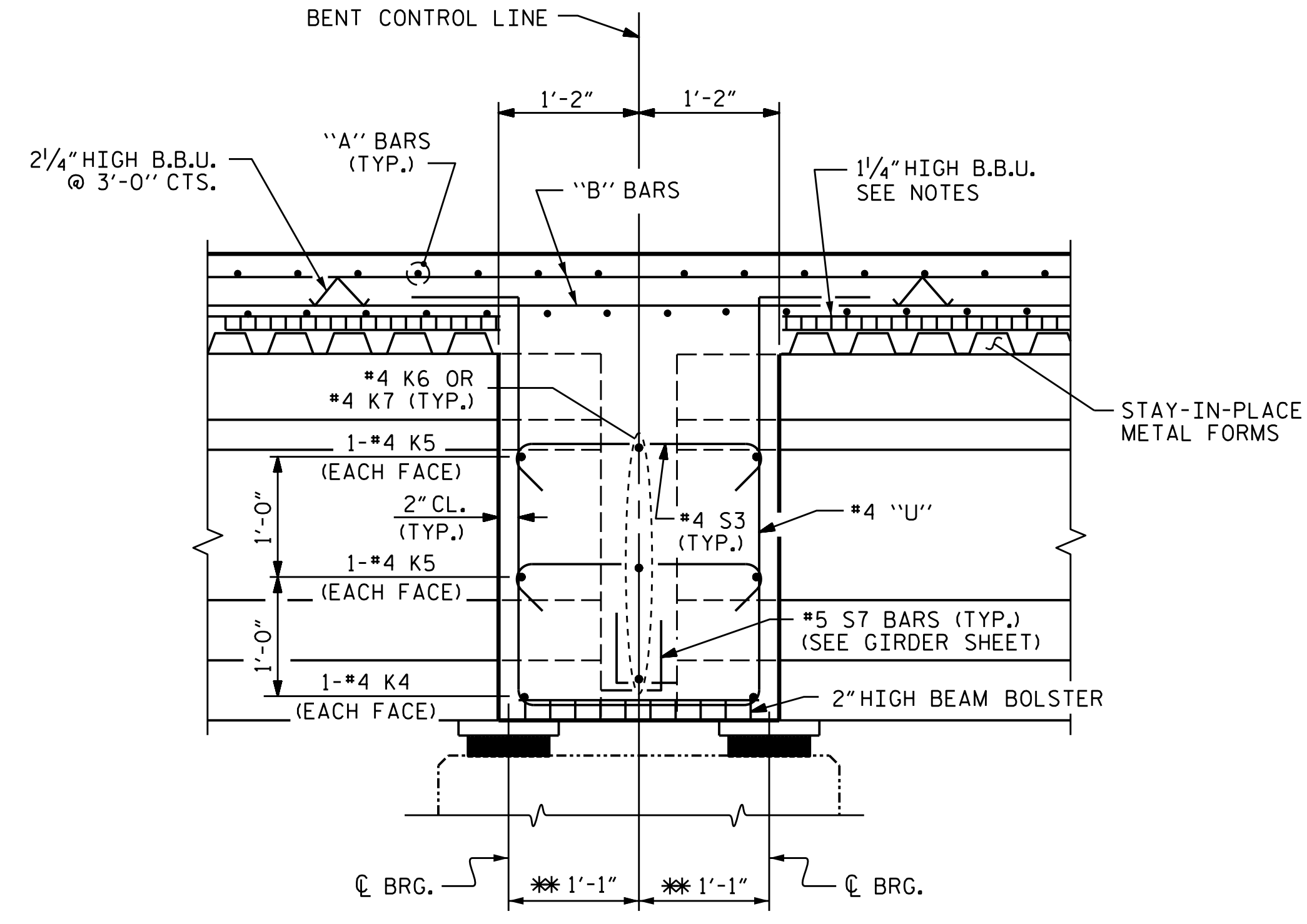


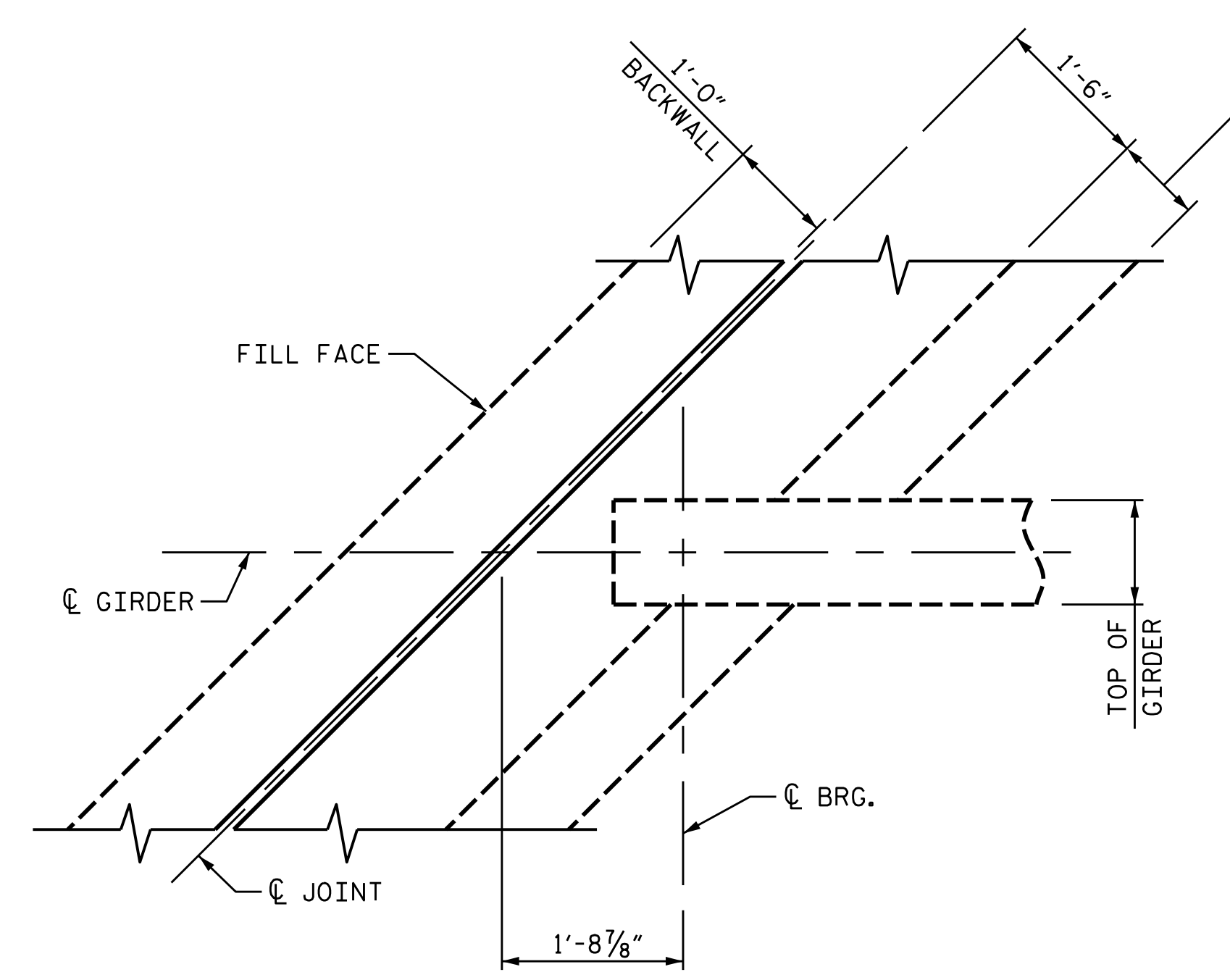
SECTION AT END BENT

* #5 G1 BAR MAY BE SHIFTED SLIGHTLY, AS NECESSARY, TO CLEAR DIAPHRAGM AND REINFORCING STEEL.

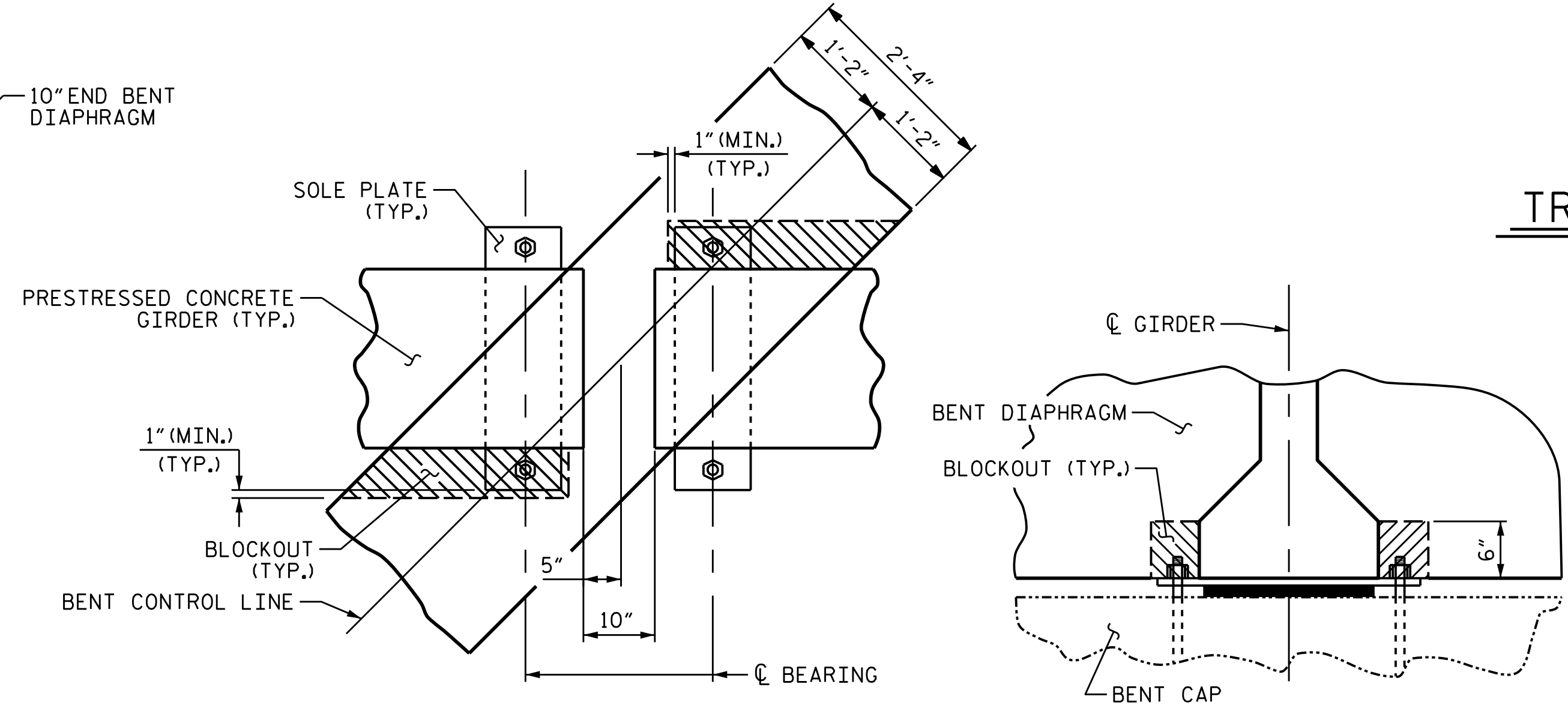


SECTION AT BENT DIAPHRAGM

* MEASURED ALONG C GIRDER



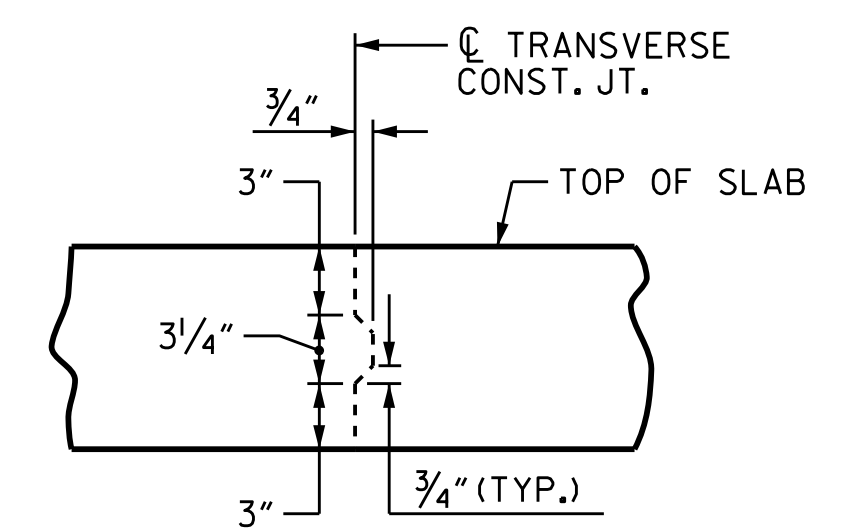
END BENT DIAPHRAGM



PLAN

SECTION

BENT DIAPHRAGM BLOCK-OUT DETAIL



TRANSVERSE CONSTRUCTION JOINT DETAIL

NOTE: REINFORCING STEEL IN SLAB NOT SHOWN. LONGITUDINAL REINFORCING STEEL SHALL BE CONTINUOUS THRU JOINT

PROJECT NO. R-2915B
ASHE COUNTY
 STATION: 234+19.20 -L-

SHEET 2 OF 2

STATE OF NORTH CAROLINA
 DEPARTMENT OF TRANSPORTATION
 RALEIGH

SUPERSTRUCTURE
 TYPICAL SECTION
 DETAILS
 NBL

REVISIONS				SHEET NO.	
NO.	BY:	DATE:	NO.	BY:	DATE:
1			3		
2			4		

TOTAL SHEETS: 30

DRAWN BY: T.J. KIRSCHBAUM DATE: 4/14/14
 CHECKED BY: R.F. WERTMAN DATE: 4/28/14
 DESIGN ENGINEER OF RECORD: R.F. WERTMAN DATE: 4/28/14

PLANS PREPARED BY:
Gannett Fleming
 Excellence Delivered As Promised

1121 Situs Court
 Suite 170
 Raleigh, NC 27606-4279
 (919) 859-4880
 NCLic. No. F-0270

