

PLAN

(RIGHT RAIL SHOWN. LEFT RAIL SIMILAR.)

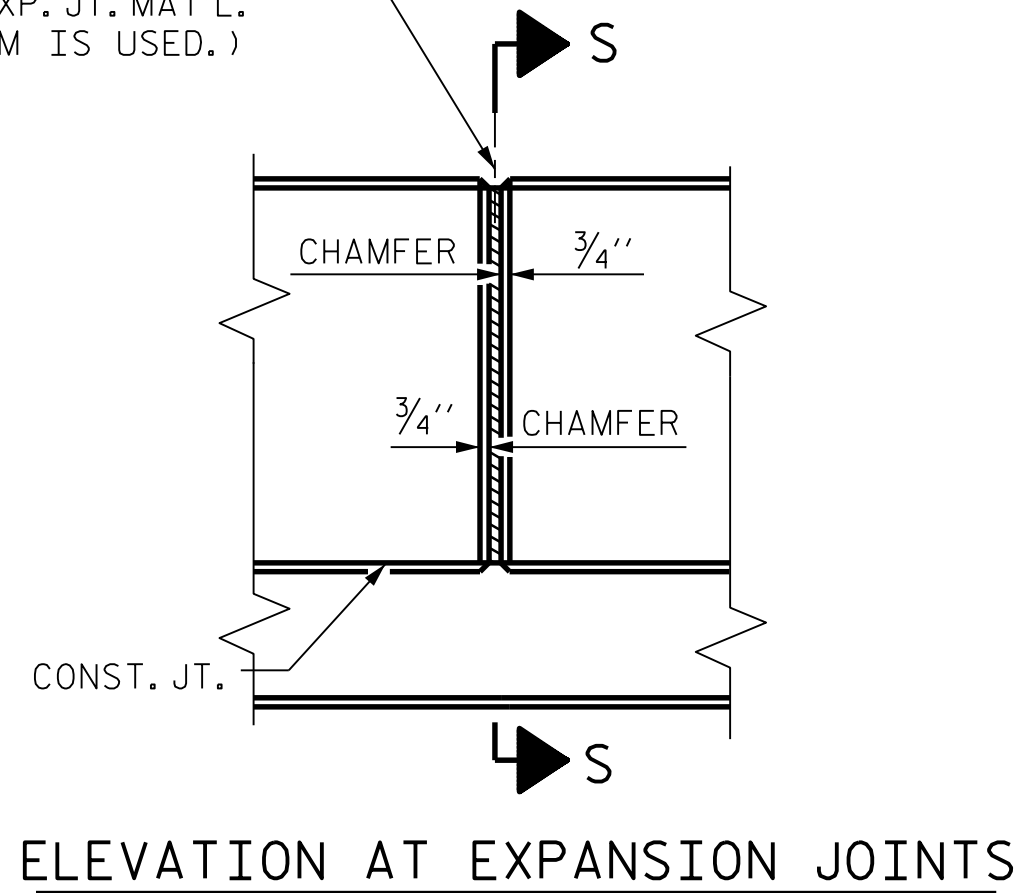
NOTES

THE BARRIER RAIL IN EACH SPAN SHALL NOT BE CAST UNTIL ALL SLAB CONCRETE IN THAT SPAN HAS BEEN CAST AND HAS REACHED A MINIMUM COMPRESSIVE STRENGTH OF 3,000 PSI.

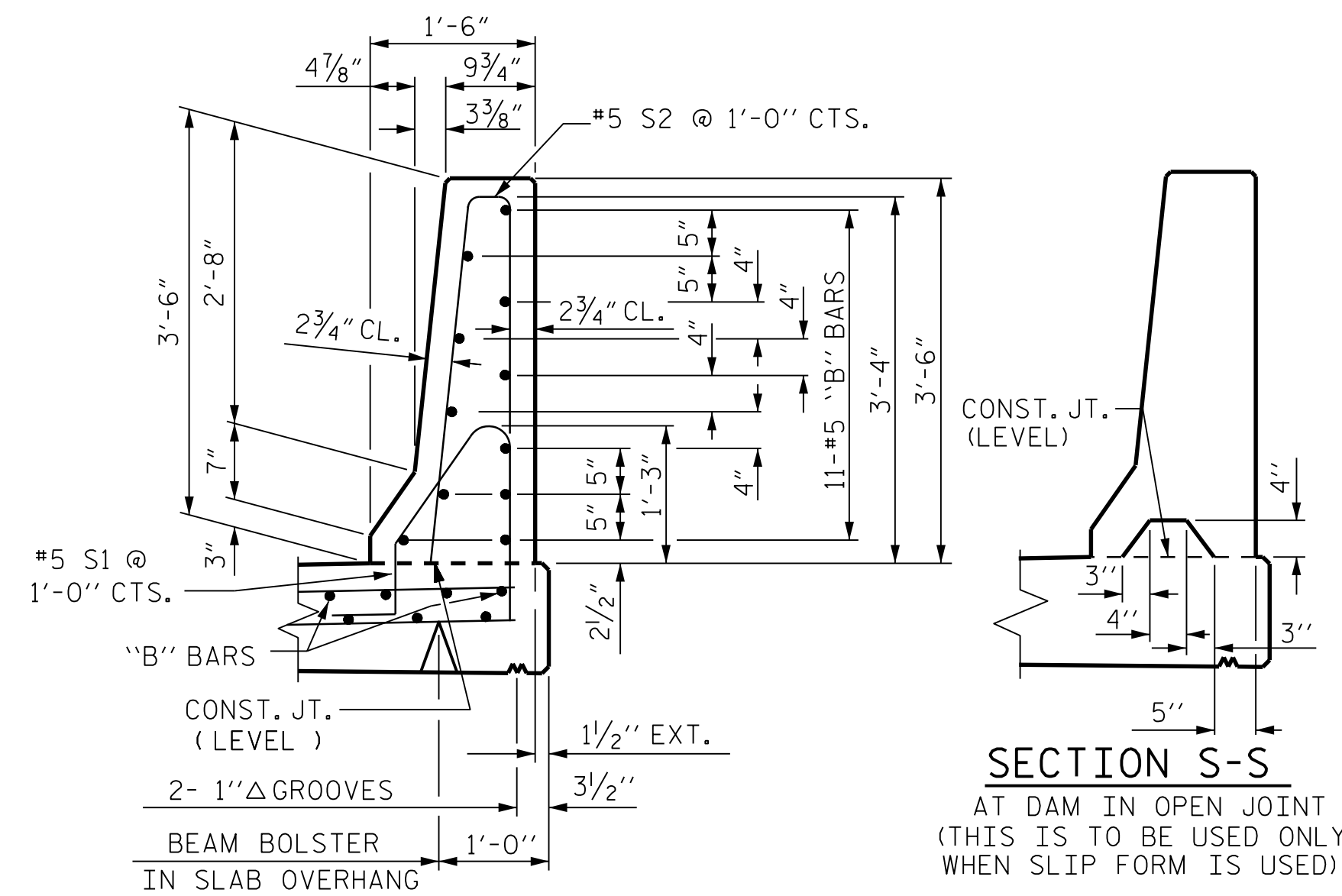
ALL REINFORCING STEEL IN BARRIER RAILS SHALL BE EPOXY COATED.

GROOVED CONTRACTION JOINTS, 1/2" IN DEPTH, SHALL BE TOOLED IN ALL EXPOSED FACES OF THE BARRIER RAIL AND IN ACCORDANCE WITH ARTICLE 825-10(B) OF THE STANDARD SPECIFICATIONS. THE CONTRACTION JOINT SHALL BE LOCATED AT EACH THIRD POINT BETWEEN BARRIER RAIL EXPANSION JOINTS. ONLY ONE CONTRACTION JOINT IS REQUIRED AT MIDPOINT OF BARRIER RAIL SEGMENTS LESS THAN 20 FEET IN LENGTH AND NO CONTRACTION JOINTS ARE REQUIRED FOR THOSE SEGMENTS LESS THAN 10 FEET IN LENGTH.

1/2" EXP. JT. MAT'L HELD IN PLACE WITH GALVANIZED NAILS.
(NOTE: OMIT EXP. JT. MAT'L. WHEN SLIP FORM IS USED.)



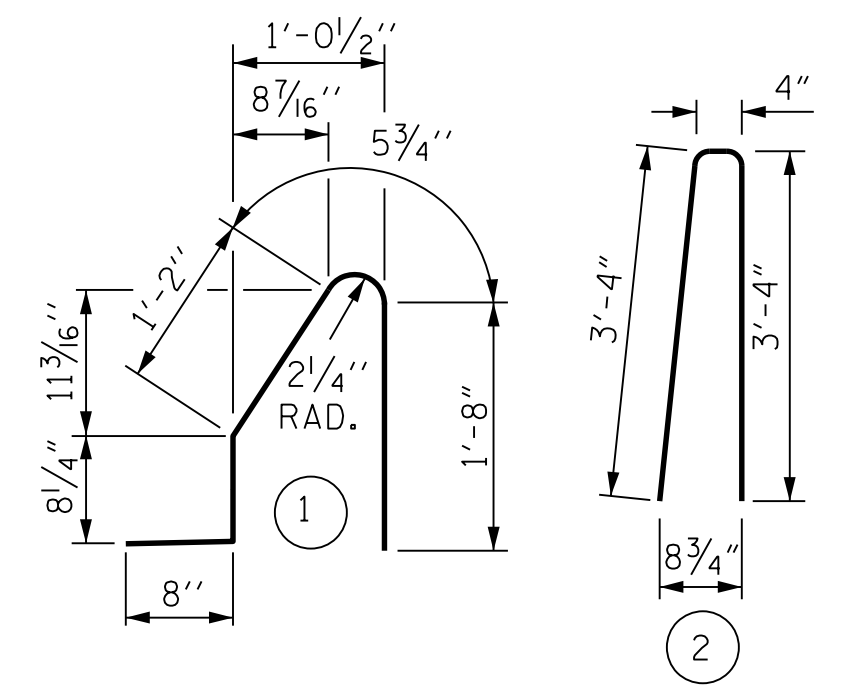
ELEVATION AT EXPANSION JOINTS



SECTION THRU RAIL

SECTION S-S
AT DAM IN OPEN JOINT
(THIS IS TO BE USED ONLY WHEN SLIP FORM IS USED)

BAR TYPES



ALL BAR DIMENSIONS ARE OUT TO OUT

BILL OF MATERIAL

FOR CONCRETE BARRIER RAIL ONLY

BAR	NO.	SIZE	TYPE	LENGTH	WEIGHT
*B1	44	#5	STR	18'-7"	853
*B2	88	#5	STR	22'-1"	2027
*S1	260	#5	1	4'-8"	1266
*S2	260	#5	2	7'-0"	1898

* EPOXY COATED REINFORCING STEEL	6,044 LBS.
CLASS AA CONCRETE	34.9 CU. YD.
CONCRETE BARRIER RAIL	256.6 LIN. FT.

PROJECT NO. R-2915B
ASHE COUNTY
STATION: 198+64.50 -L-

STATE OF NORTH CAROLINA
DEPARTMENT OF TRANSPORTATION
RALEIGH
STANDARD
CONCRETE
BARRIER RAIL

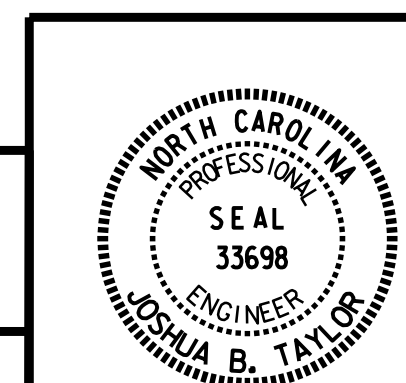
(SBL)

REVISIONS				SHEET No.	
No.	BY:	DATE:	No.	BY:	DATE:
1			3		
2			4		
					TOTAL SHEETS
					34

CDM Smith
CDM SMITH
5400 Glenwood Avenue, Suite 400
Raleigh, NC 27612-3228
NC COA No. F-1255

DESIGN ENGINEER : J. TAYLOR DATE : 08-14

DWG. No.



FILE: R:\medon\192915B Structures\PLANS\bridge 1 SBL\22915B_S0_BR_01.dgn
DATE: 11/22/14 2:57:41 PM

ASSEMBLED BY : J. SLOAN	DATE : 04-14
CHECKED BY : J. TAYLOR	DATE : 07-14
DRAWN BY : ARB 5/87	REV. 10/11/11 MAA/GM
CHECKED BY : SJD 9/87	REV. 7/12 MAA/GM
	REV. 6/13 MAA/GM

STD. NO. CBR1