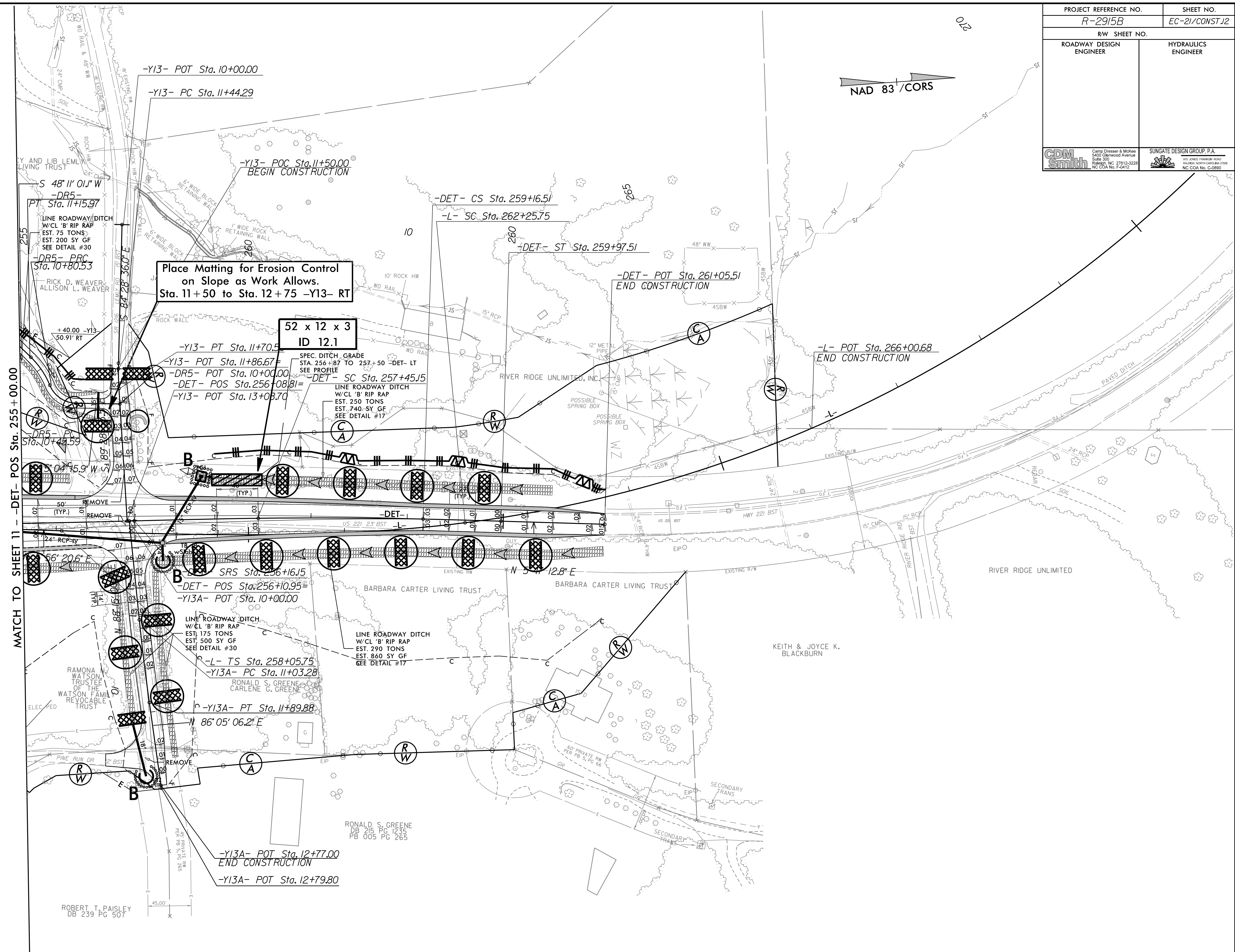


Place Matting for Erosion Control on Slopes Adjacent to Permitted Wetlands as Work Allows.

INSTALL MATTING FOR EROSION CONTROL IN THE PROPOSED DITCH LINE AND CUT SLOPE

PROJECT REFERENCE NO. <i>R-2915B</i>	SHEET NO. <i>EC-21/CONST J2</i>
RW SHEET NO.	
ROADWAY DESIGN ENGINEER	HYDRAULICS ENGINEER
CDM Smith Camp Dresser & McKee 5425 Glenwood Avenue Suite 500 Raleigh, NC 27612-3229 NC CDA No. F-5412	SUNGATE DESIGN GROUP, P.A. 115 JONES FARM ROAD HILLSBORO, NC 27541 NC CDA No. C-3890



MATCH TO SHEET 11 - -DET- POS Sta. 255+00.00

SEE SHEET 17 FOR -DET- PROFILE
 SEE SHEET 19 FOR -Y13- PROFILE
 SEE SHEET 19 FOR -Y13A- PROFILE
 SEE SHEET 21 FOR -DR5- PROFILE
 SEE SHEETS 2D-1 THRU 2D-2 FOR DRAINAGE DETAILS
 DRIVEWAY RADII ARE 15' UNLESS NOTED OTHERWISE