

NOTE: UTILIZE TEMPORARY SEDIMENT BASIN OR SPECIAL STILLING BASIN(S) AS STILLING BASIN WHERE APPLICABLE.

CLEARING AND GRUBBING EROSION CONTROL FOR CONSTRUCTION SHEET 11

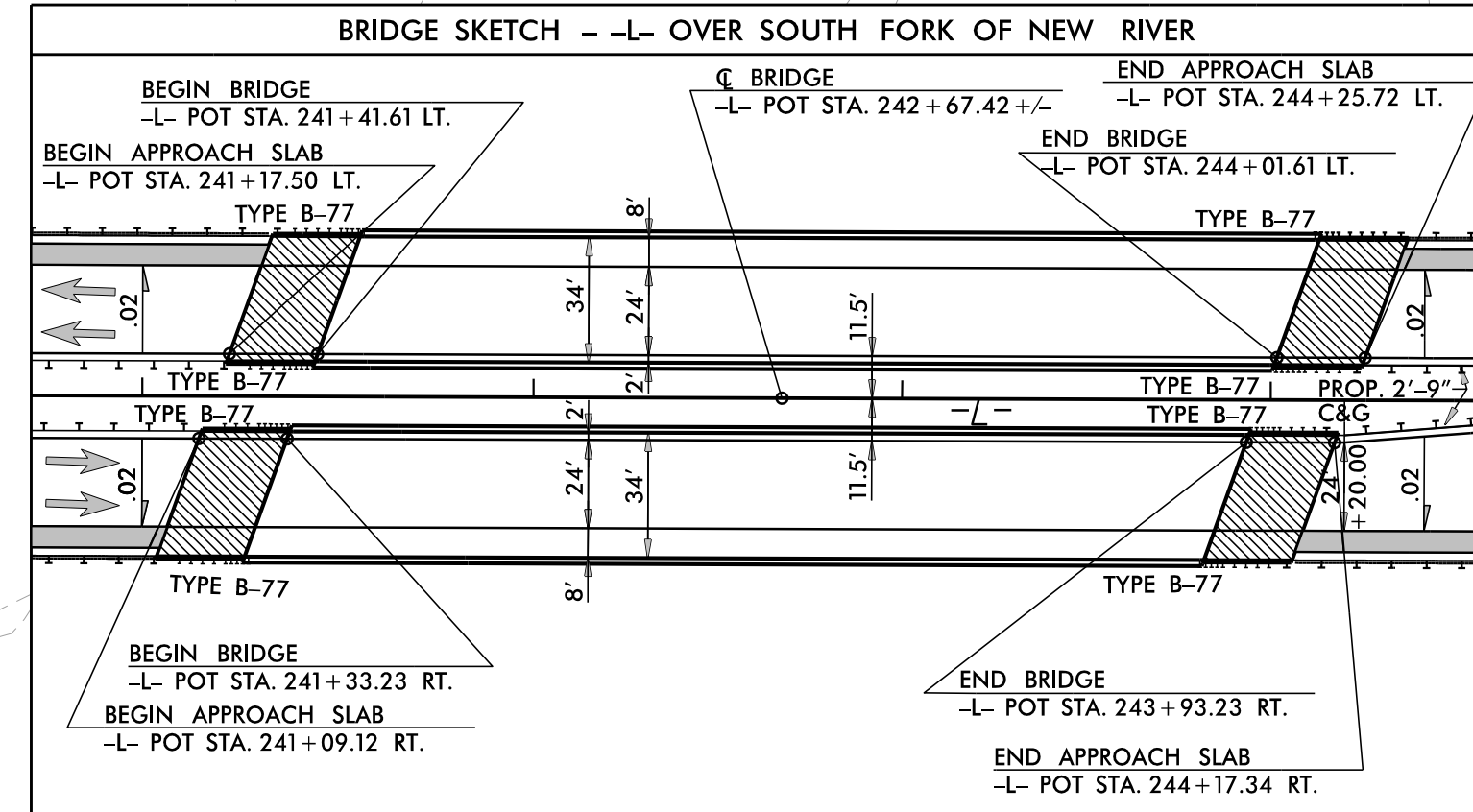
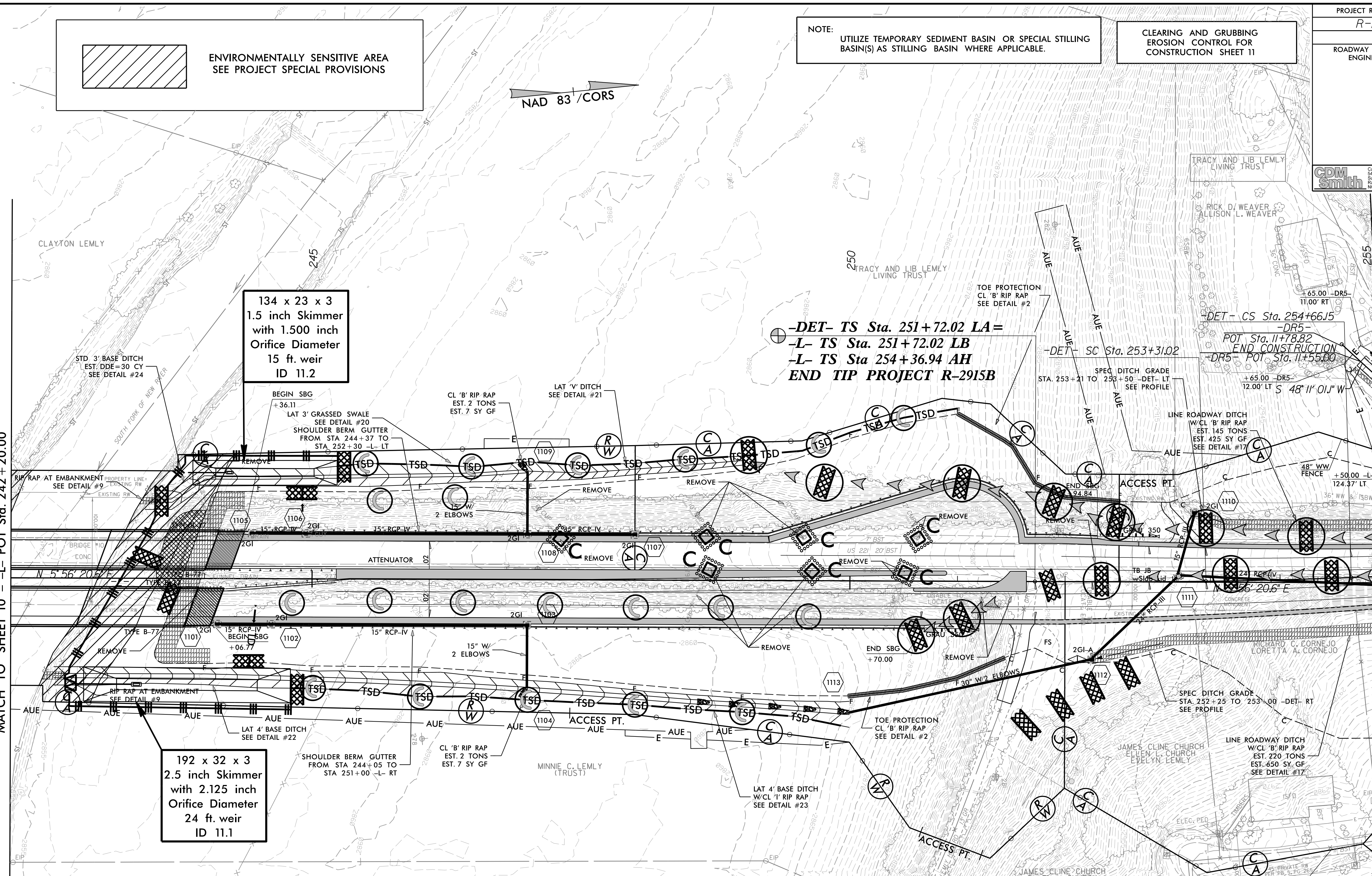
ENVIRONMENTALLY SENSITIVE AREA
SEE PROJECT SPECIAL PROVISIONS

NAD 83 / CORS

01/23/14 - RW REVISIONS: UPDATED PROPERTY OWNER NAME ON PARCEL 41. - PJS
 03/25/14 - RW REVISIONS: REVISED PROPOSED RW ON PARCELS 41, 43, 44, 45, 46, 53 AND 55; ADDED AUE ON PARCELS 42 AND 44; REVISED CA LIMITS TO PROVIDE DRIVEWAY ACCESS ON PARCEL 43; ADDED PARCEL NUMBER 55. - DJC
 01/05/15 - RW REVISIONS: UPDATED PROPERTY OWNER NAME ON PARCEL 39 AND 46. - PJS
 04/10/15 - RW REVISIONS: ADDED A TCE ON PARCEL 44. - CJT
 05/20/15 - RW REVISIONS: UPDATED PROPERTY OWNER NAMES AND DEED REFERENCES ON PARCEL 42 AND 47; REVISED THE FULL CA LIMITS FROM -L- STA. 257+50.00 TO STA. 255+15.00 LT.; AND ADDED AND ACCESS POINT FROM -L- STA. 255+15.00 TO STA. 255+65.00 LT. ON PARCELS 42. - DJC

MATCH TO SHEET 10 -L- POT Sta. 242+20.00

MATCH TO SHEET 12 -L- POS Sta. 255+00.00



NOTE: PLACE TEMPORARY ROCK SEDIMENT DAMS TYPE - B AND TEMPORARY ROCK SILT CHECKS TYPE - A AT DRAINAGE OUTLETS.

NOTE: PERIMETER EROSION CONTROL MEASURES SHALL BE INSTALLED DURING CLEARING AND GRUBBING PHASE.

NOTES: ANY DEVIATION FROM OPTIONS GIVEN WILL REQUIRE PRIOR APPROVAL BY ENGINEER.

ADDITIONAL EROSION CONTROL DEVICES MAY NEED TO BE INSTALLED AS DIRECTED BY THE ENGINEER.

SEE SHEET 21 FOR -DR5- PROFILE
 DRIVEWAY RADII ARE 15' UNLESS NOTED OTHERWISE

SEE SHEET 16 FOR -L- PROFILE
 SEE SHEET 16 FOR -DET- PROFILE
 SEE SHEET 2B-2 FOR U-TURN BULB DETAILS
 SEE SHEETS 2D-1 THRU 2D-3 FOR DRAINAGE DETAILS
 SEE SHEETS S-1 THRU S-? FOR STRUCTURE PLANS