

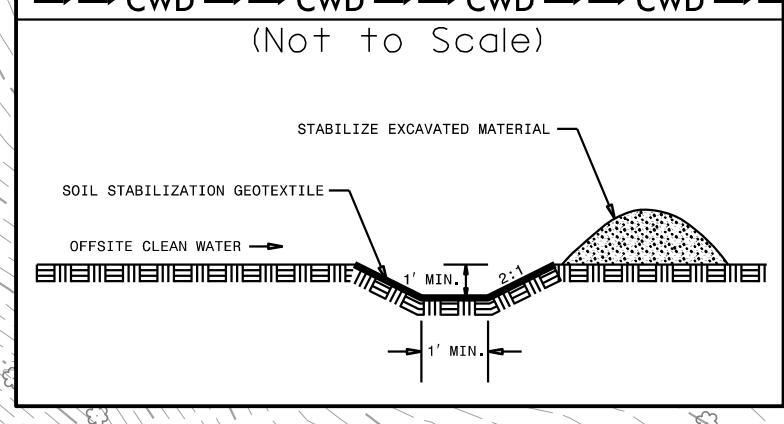
PROJECT REFERENCE NO. <i>R-2915B</i>	SHEET NO. <i>EC-09/CONST.09</i>
RW SHEET NO.	
ROADWAY DESIGN ENGINEER	HYDRAULICS ENGINEER
CDM Smith Camp Dresser & McKee 8425 Glenwood Avenue Suite 300 Raleigh, NC 27612-3229 NC CDA No. F-5412	SUNGATE DESIGN GROUP, P.A. 110 JONES FARM RD HARRAS, NC 27530 NC CDA No. G-9890

INSTALL PIPE(S) IN JURISDICTIONAL AREAS WITHOUT IMPACTING STREAM UNTIL AREA STABILIZED AND ACCORDING TO NCDOT BEST MANAGEMENT PRACTICES FOR CONSTRUCTION AND MAINTENANCE ACTIVITIES MANUAL.



CLEARING AND GRUBBING
EROSION CONTROL FOR
CONSTRUCTION SHEET 09

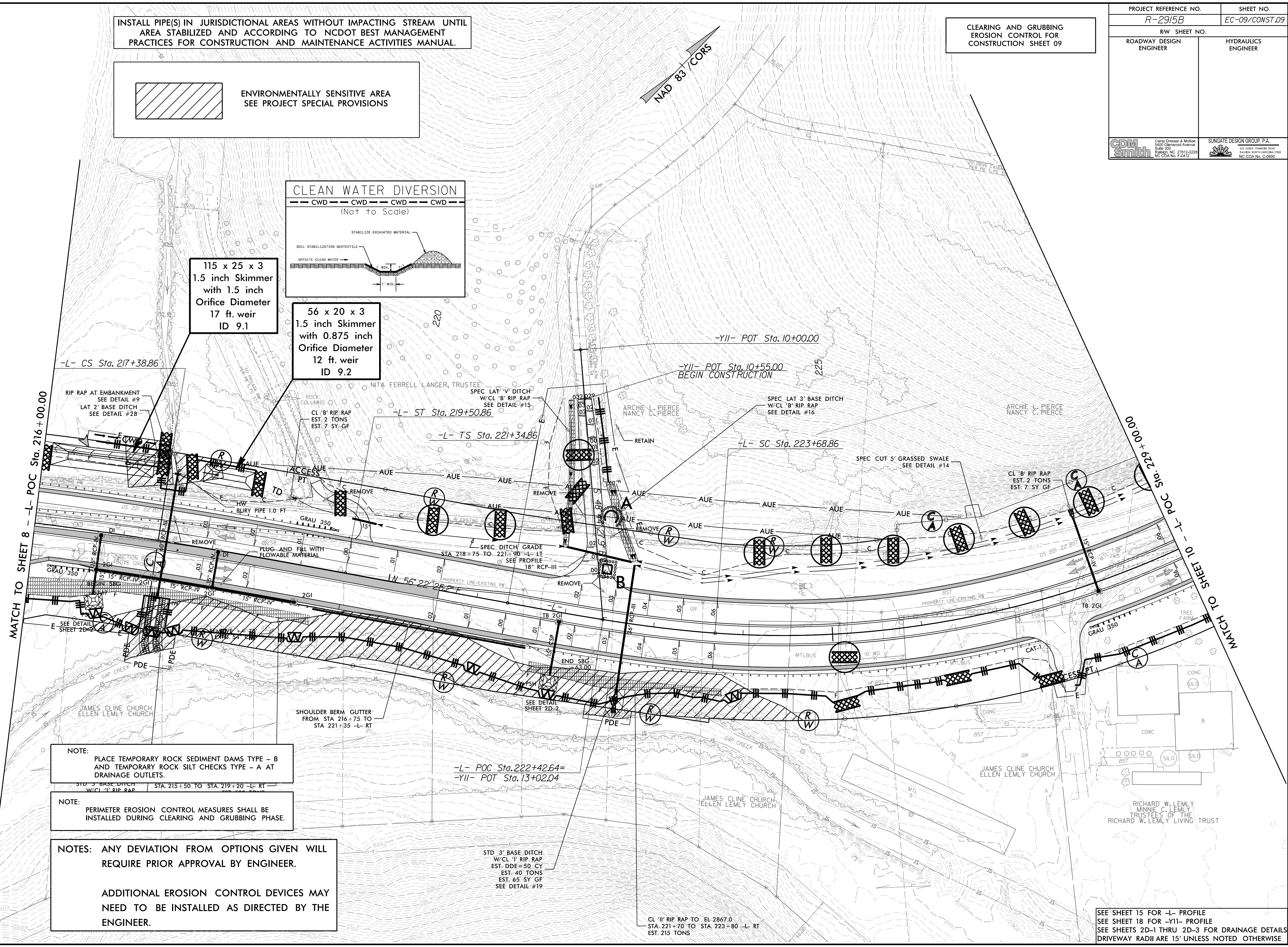
CLEAN WATER DIVERSION
(Not to Scale)



115 x 25 x 3
1.5 inch Skimmer
with 1.5 inch
Orifice Diameter
17 ft. weir
ID 9.1

56 x 20 x 3
1.5 inch Skimmer
with 0.875 inch
Orifice Diameter
12 ft. weir
ID 9.2

060314 - RW REVISIONS: ADDED PDE FROM -L- STATION 222+38.00 TO 222+88.00 RIGHT ON PARCEL 36. - JBW
090814 - RW REVISIONS: REVISED DRIVEWAY OPENING FROM 11' +/- TO 30' +/- ON PARCEL 38. - DJC



NOTE:
PLACE TEMPORARY ROCK SEDIMENT DAMS TYPE - B
AND TEMPORARY ROCK SILT CHECKS TYPE - A AT
DRAINAGE OUTLETS.

NOTE:
PERIMETER EROSION CONTROL MEASURES SHALL BE
INSTALLED DURING CLEARING AND GRUBBING PHASE.

NOTES: ANY DEVIATION FROM OPTIONS GIVEN WILL
REQUIRE PRIOR APPROVAL BY ENGINEER.

ADDITIONAL EROSION CONTROL DEVICES MAY
NEED TO BE INSTALLED AS DIRECTED BY THE
ENGINEER.

SEE SHEET 15 FOR -L- PROFILE
SEE SHEET 18 FOR -YII- PROFILE
SEE SHEETS 2D-1 THRU 2D-3 FOR DRAINAGE DETAILS
DRIVEWAY RADII ARE 15' UNLESS NOTED OTHERWISE