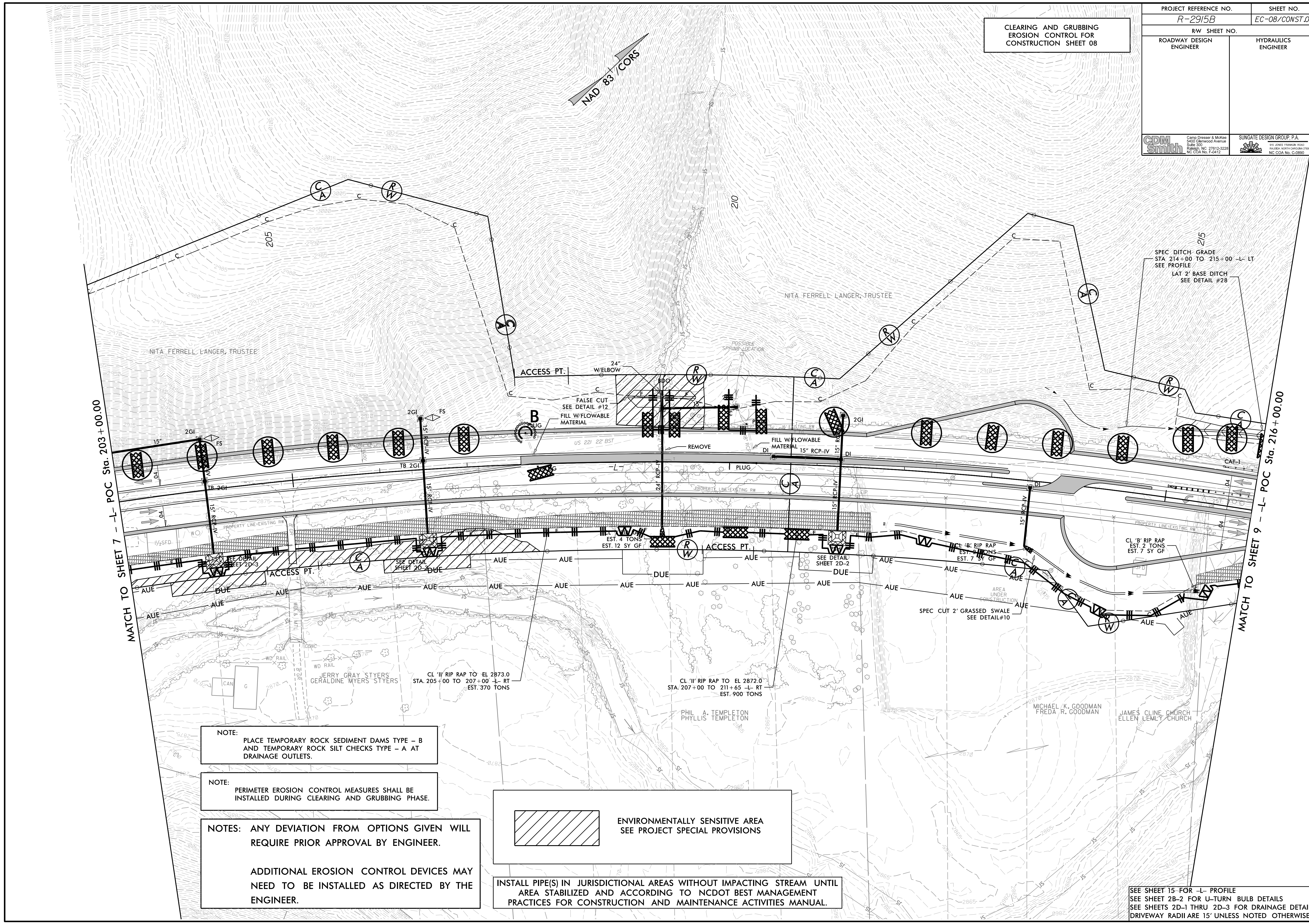


090814 - RW REVISIONS: ADDED AN ACCESS POINT FROM -L- STA. 207+58.00 TO STA. 208+18.00 LT. ON PARCEL 30. - DJC

**CLEARING AND GRUBBING
EROSION CONTROL FOR
CONSTRUCTION SHEET 08**

PROJECT REFERENCE NO. <i>R-2915B</i>	SHEET NO. <i>EC-08/CONST.08</i>
RW SHEET NO. ROADWAY DESIGN ENGINEER	HYDRAULICS ENGINEER
CDM Smith Camp Dresser & McKee 8421 Glenwood Avenue Suite 300 Raleigh, NC 27612-3229 NC COA No. F-5412	SUNGATE DESIGN GROUP, P.A. 115 JONES FARM ROAD HARRISBORO, NC 27533 NC COA No. C-9890



NOTE:
PLACE TEMPORARY ROCK SEDIMENT DAMS TYPE - B
AND TEMPORARY ROCK SILT CHECKS TYPE - A AT
DRAINAGE OUTLETS.

NOTE:
PERIMETER EROSION CONTROL MEASURES SHALL BE
INSTALLED DURING CLEARING AND GRUBBING PHASE.

NOTES: ANY DEVIATION FROM OPTIONS GIVEN WILL
REQUIRE PRIOR APPROVAL BY ENGINEER.

ADDITIONAL EROSION CONTROL DEVICES MAY
NEED TO BE INSTALLED AS DIRECTED BY THE
ENGINEER.

 ENVIRONMENTALLY SENSITIVE AREA
SEE PROJECT SPECIAL PROVISIONS

INSTALL PIPE(S) IN JURISDICTIONAL AREAS WITHOUT IMPACTING STREAM UNTIL
AREA STABILIZED AND ACCORDING TO NCDOT BEST MANAGEMENT
PRACTICES FOR CONSTRUCTION AND MAINTENANCE ACTIVITIES MANUAL.

SEE SHEET 15 FOR -L- PROFILE
SEE SHEET 2B-2 FOR U-TURN BULB DETAILS
SEE SHEETS 2D-1 THRU 2D-3 FOR DRAINAGE DETAILS
DRIVEWAY RADII ARE 15' UNLESS NOTED OTHERWISE