

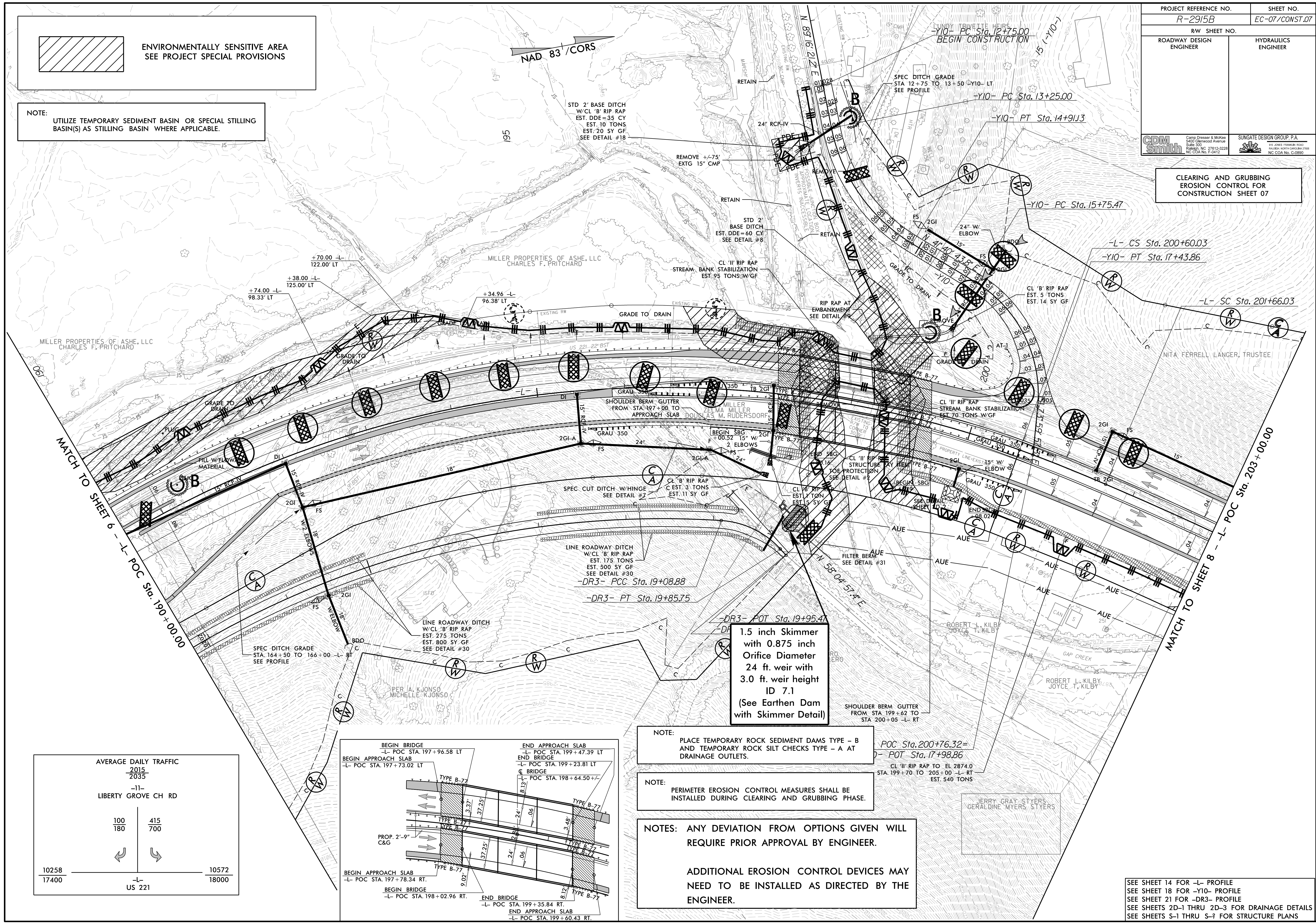
PROJECT REFERENCE NO. <i>R-2915B</i>	SHEET NO. <i>EC-07/CONST.07</i>
RW SHEET NO.	
ROADWAY DESIGN ENGINEER	HYDRAULICS ENGINEER
CDM Smith Camp Dresser & McKee 5425 Glenwood Avenue Suite 300 Raleigh, NC 27615-3229 NC CDA No. F-5412	SUNGATE DESIGN GROUP, P.A. 1100 GARDNER ROAD HUNTERDON, NJ 08834 NC CDA No. C-2899

 ENVIRONMENTALLY SENSITIVE AREA
SEE PROJECT SPECIAL PROVISIONS

NOTE:
UTILIZE TEMPORARY SEDIMENT BASIN OR SPECIAL STILLING BASIN(S) AS STILLING BASIN WHERE APPLICABLE.

CLEARING AND GRUBBING
EROSION CONTROL FOR
CONSTRUCTION SHEET 07

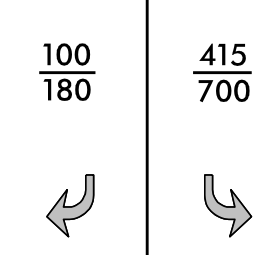
01/31/14 - RW REVISIONS: UPDATED PROPERTY OWNER NAMES AND DEED REFERENCES ON PARCELS 21 AND 29. - PJS
09/08/14 - RW REVISIONS: UPDATED PROPERTY OWNER NAME AND DEED REFERENCE ON PARCEL 21. - DJC
04/10/15 - RW REVISIONS: REVISED THE PROPOSED RW ON PARCELS 23 AND 25. - CJT
05/20/15 - RW REVISIONS: UPDATED PROPERTY LINES ON PARCEL 29 AND CREATED PARCEL 29A. - DJC



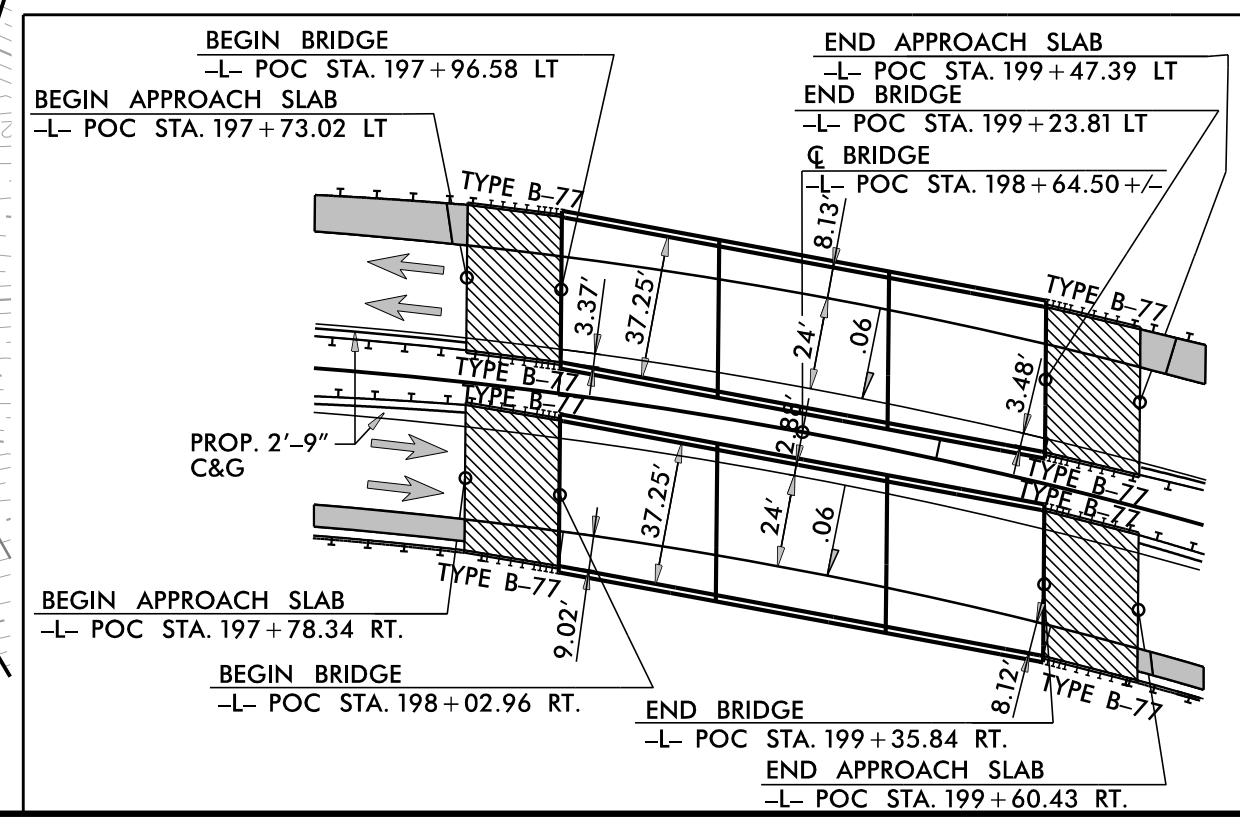
AVERAGE DAILY TRAFFIC

2015	2035
100	415
180	700

-11-
LIBERTY GROVE CH RD



10258 10572
17400 -L- 18000
US 221



NOTE:
PLACE TEMPORARY ROCK SEDIMENT DAMS TYPE - B AND TEMPORARY ROCK SILT CHECKS TYPE - A AT DRAINAGE OUTLETS.

NOTE:
PERIMETER EROSION CONTROL MEASURES SHALL BE INSTALLED DURING CLEARING AND GRUBBING PHASE.

NOTES: ANY DEVIATION FROM OPTIONS GIVEN WILL REQUIRE PRIOR APPROVAL BY ENGINEER.

ADDITIONAL EROSION CONTROL DEVICES MAY NEED TO BE INSTALLED AS DIRECTED BY THE ENGINEER.

1.5 inch Skimmer
with 0.875 inch
Orifice Diameter
24 ft. weir with
3.0 ft. weir height
ID 7.1
(See Earthen Dam
with Skimmer Detail)

SEE SHEET 14 FOR -L- PROFILE
SEE SHEET 18 FOR -Y10- PROFILE
SEE SHEET 21 FOR -DR3- PROFILE
SEE SHEETS 2D-1 THRU 2D-3 FOR DRAINAGE DETAILS
SEE SHEETS S-1 THRU S-? FOR STRUCTURE PLANS