

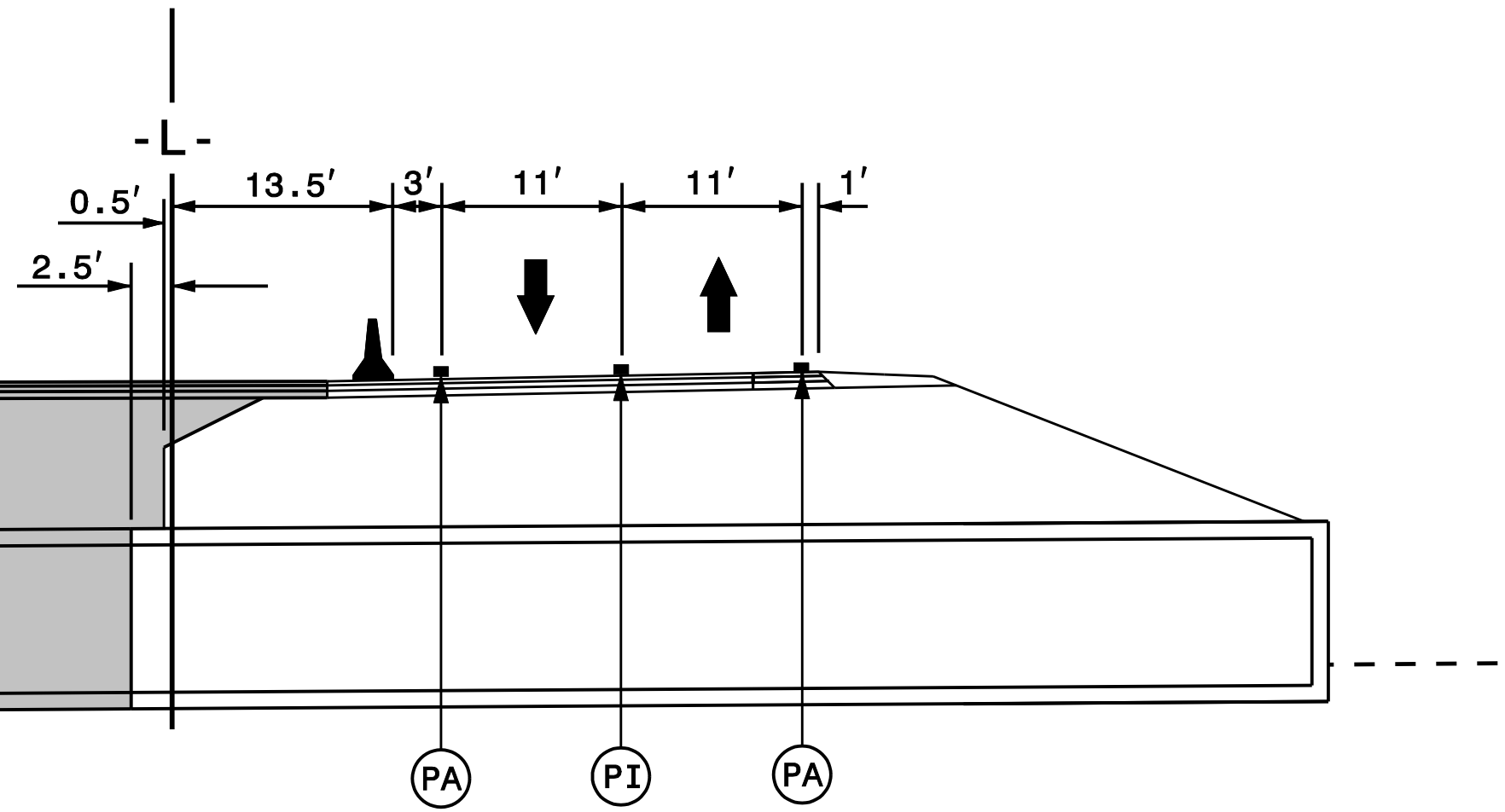
STA. 158+30+/- -L-  
 BEGIN TEMPORARY PAVEMENT MARKINGS  
 TIE TO PAVEMENT MARKINGS FROM R-2519A  
 COORDINATE TRAFFIC SHIFT WITH R-2519A

R-2915A R-2915B

SR 1003 IDLEWILD RD

-L- (US 221)

MATCHLINE SEE SHEET TMP-15  
 -L- STA. 168+50



SECTION I-I  
 161+50+/- -L-

NOTE:  
 ALL PAVEMENT MARKINGS ARE EXISTING  
 MARKINGS UNLESS OTHERWISE NOTED

PLAN PREPARED IN THE OFFICE OF:  
**PROGRESSIVE**  
 DESIGN GROUP, INC.  
 ENGINEERS • CONSULTANTS

APPROVED: *[Signature]* DATE: 5/7/2015  
 SEAL  
 NORTH CAROLINA  
 PROFESSIONAL  
 ENGINEER  
 SEAL 025465  
 TIM ARE

DIVISION OF HIGHWAYS  
 STATE OF NORTH CAROLINA  
 DEPARTMENT OF TRANSPORTATION  
 WORK ZONE TRAFFIC CONTROL

TRANSPORTATION  
 MANAGEMENT PLAN  
 PHASE II DETAILS