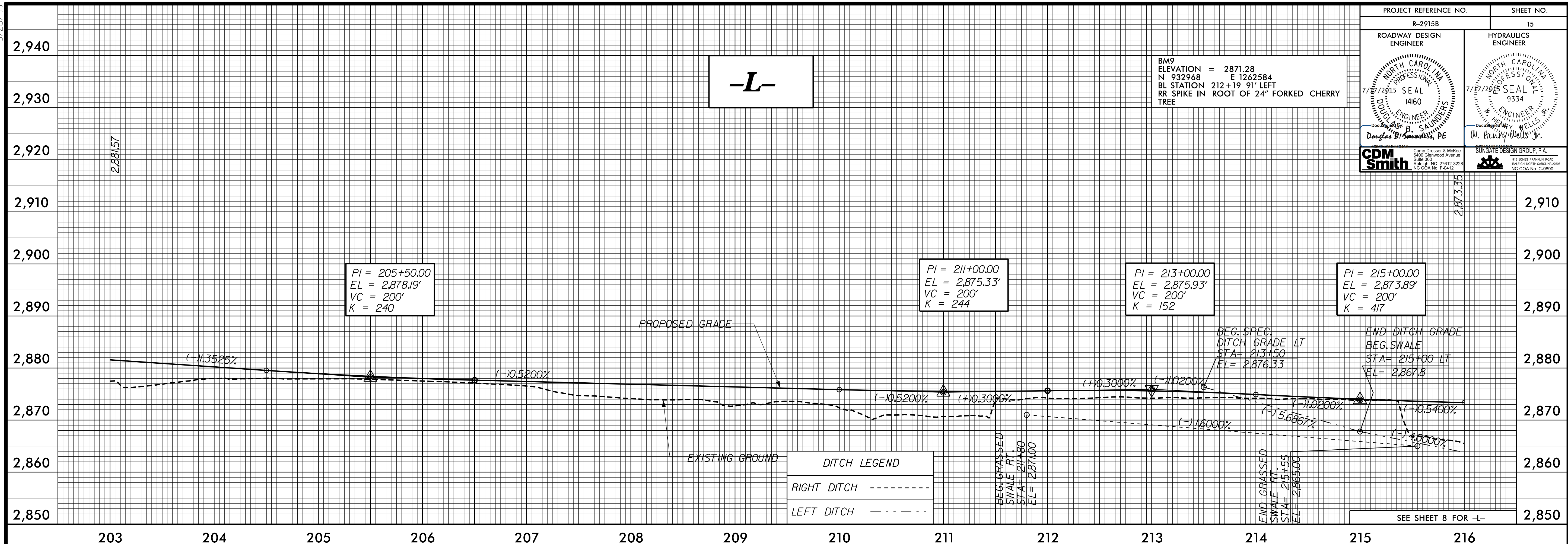
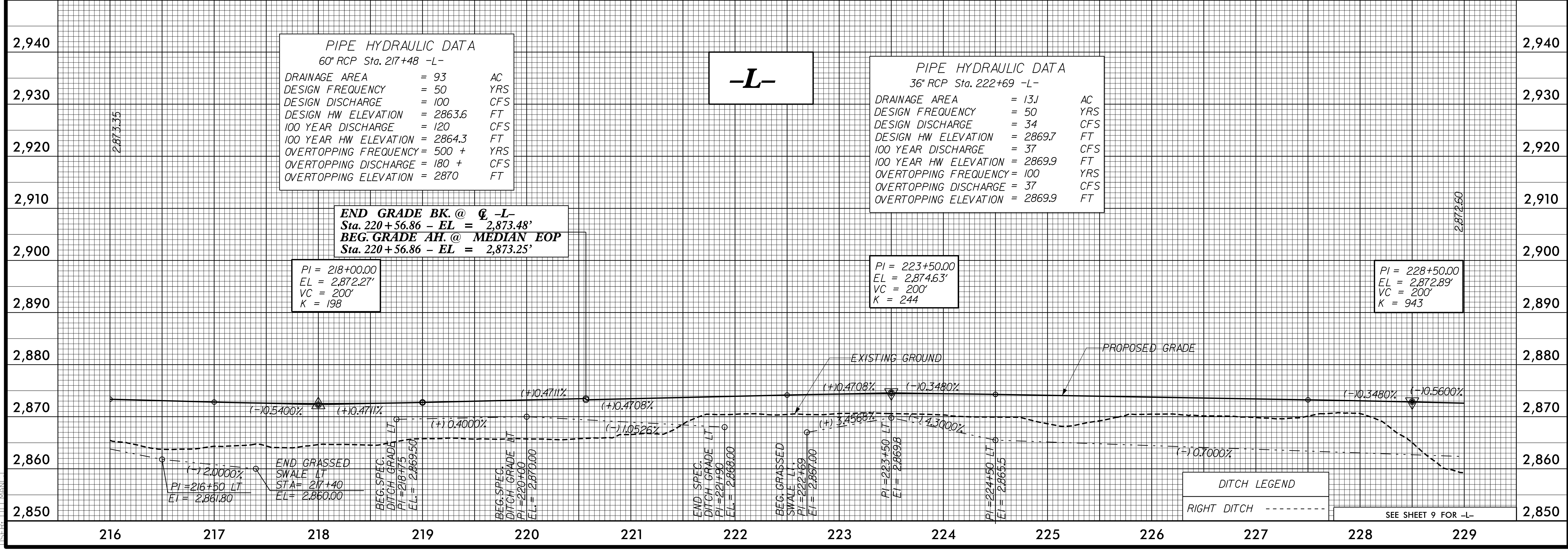


PROJECT REFERENCE NO.		SHEET NO.
R-2915B		15
ROADWAY DESIGN ENGINEER	HYDRAULICS ENGINEER	

BM9
ELEVATION = 2871.28
N 932948 E 1262584
BL STATION 212+19 91' LEFT
RR SPIKE IN ROOT OF 24" FORKED CHERRY TREE



203 204 205 206 207 208 209 210 211 212 213 214 215 216



216 217 218 219 220 221 222 223 224 225 226 227 228 229