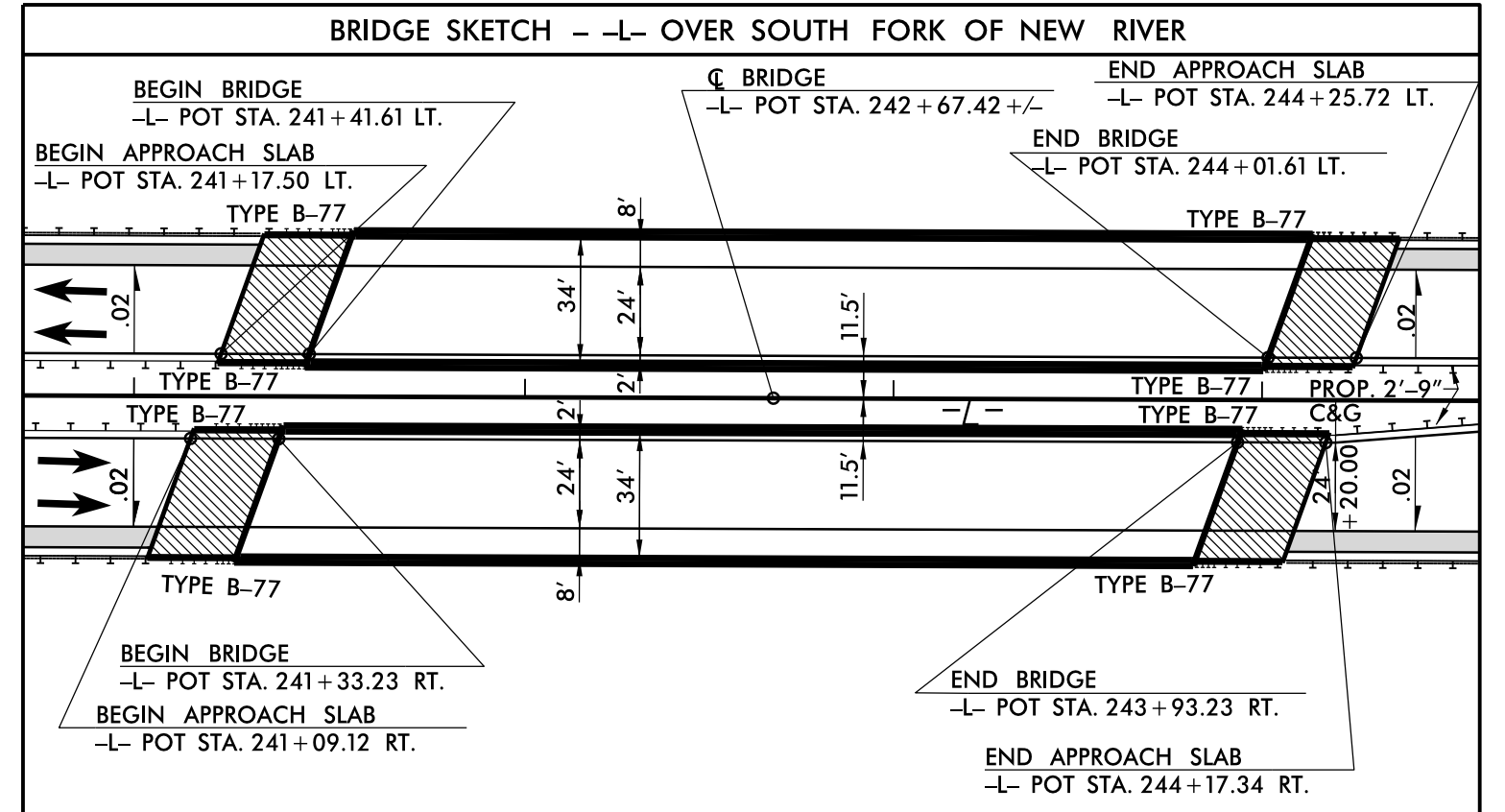
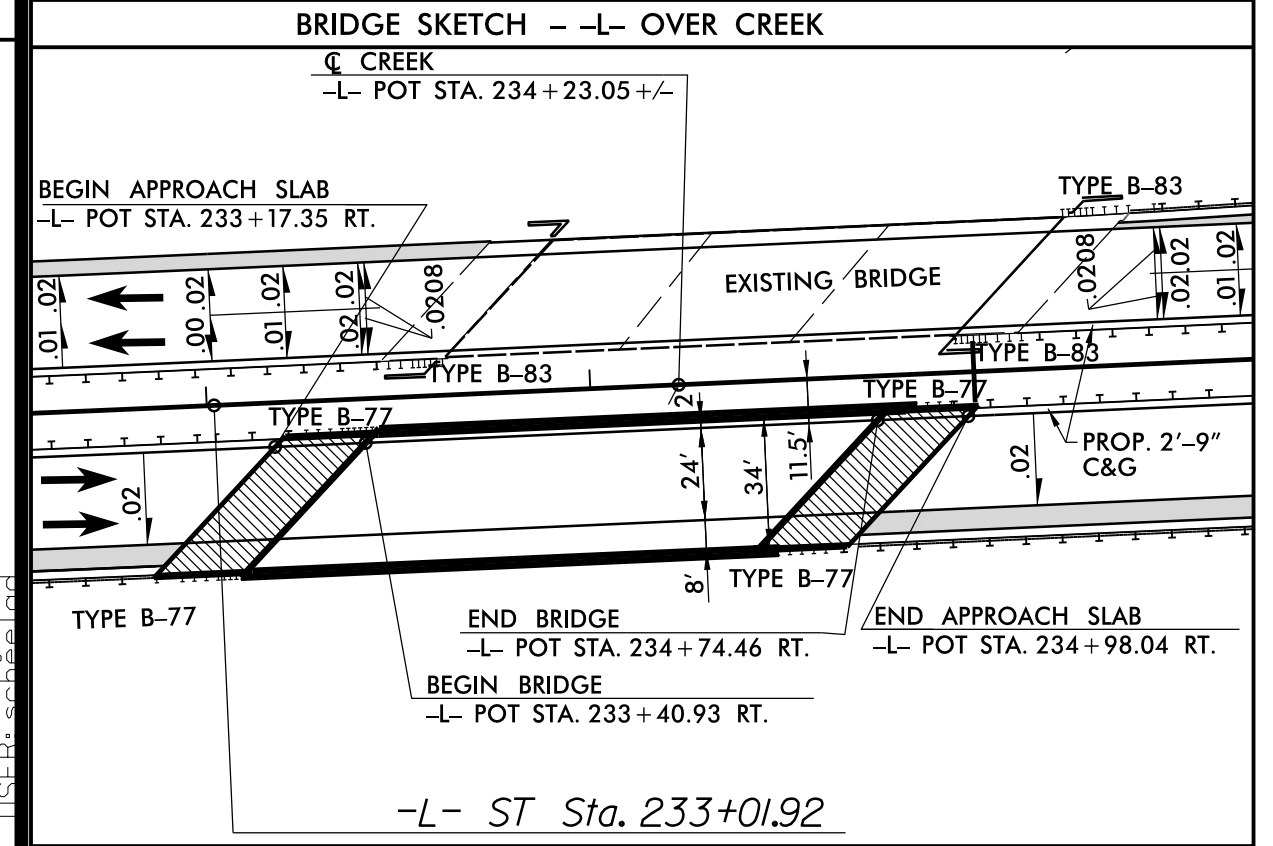
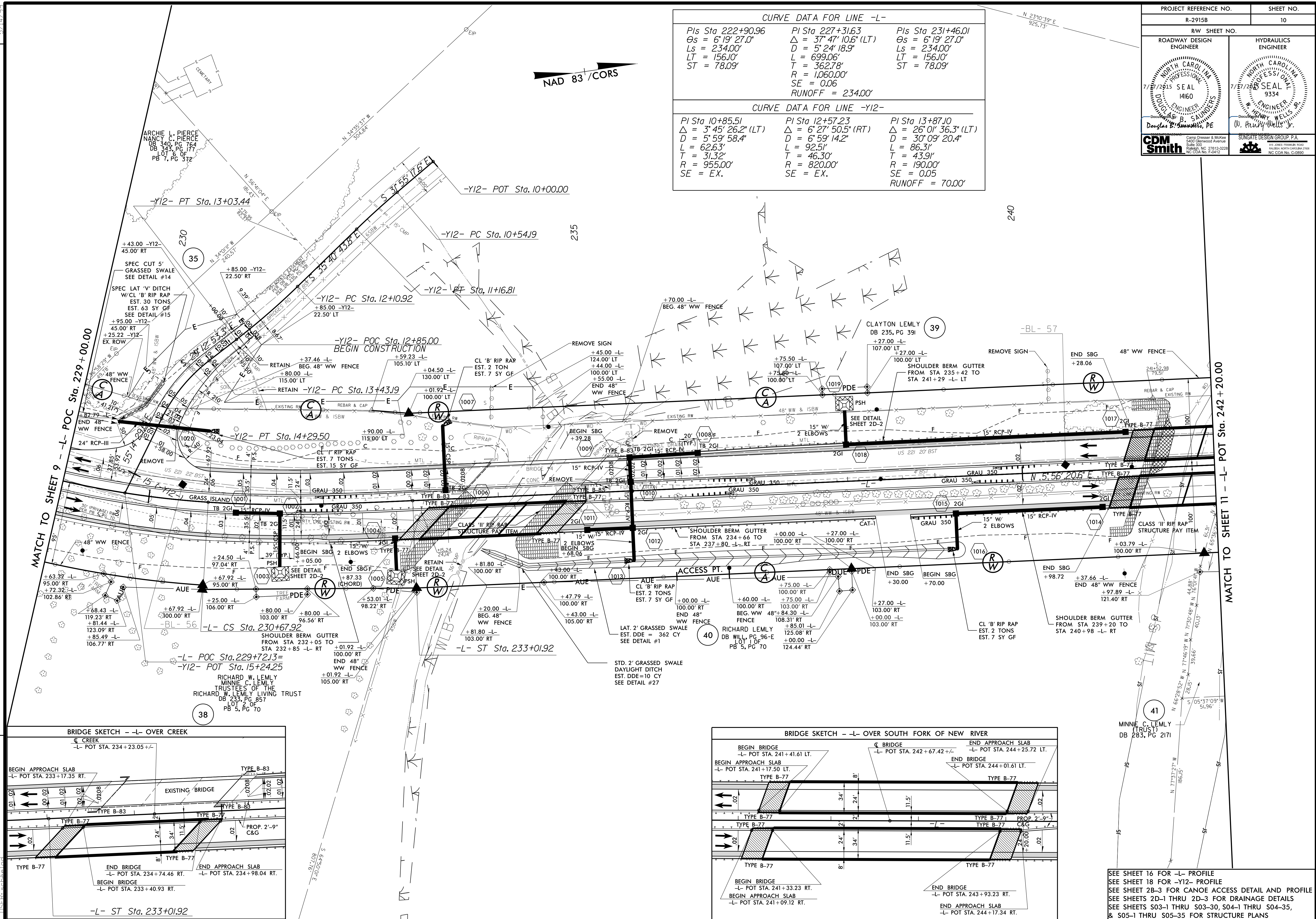


CURVE DATA FOR LINE -L-		
Pls Sta 222+90.96	Pls Sta 227+31.63	Pls Sta 231+46.01
$\Delta = 6' 19' 27.0''$	$\Delta = 3' 47' 10.6''$ (LT)	$\Delta = 6' 19' 27.0''$
$Ls = 234.00'$	$D = 5' 24' 18.9''$	$Ls = 234.00'$
$LT = 156.10'$	$L = 699.06'$	$LT = 156.10'$
$ST = 78.09'$	$T = 362.78'$	$ST = 78.09'$
	$R = 1,060.00'$	
	$SE = 0.06$	
	$RUNOFF = 234.00'$	

CURVE DATA FOR LINE -Y12-		
Pls Sta 10+85.51	Pls Sta 12+57.23	Pls Sta 13+87.10
$\Delta = 3' 45' 26.2''$ (LT)	$\Delta = 6' 27' 50.5''$ (RT)	$\Delta = 26' 01' 36.3''$ (LT)
$D = 5' 59' 58.4''$	$D = 6' 59' 14.2''$	$D = 30' 09' 20.4''$
$L = 62.63'$	$L = 92.51'$	$L = 86.31'$
$T = 31.32'$	$T = 46.30'$	$T = 43.91'$
$R = 955.00'$	$R = 820.00'$	$R = 190.00'$
$SE = EX.$	$SE = EX.$	$SE = 0.05$
		$RUNOFF = 70.00'$

NAD 83 / CORS



SEE SHEET 16 FOR -L- PROFILE
 SEE SHEET 18 FOR -Y12- PROFILE
 SEE SHEET 2B-3 FOR CANOE ACCESS DETAIL AND PROFILE
 SEE SHEETS 2D-1 THRU 2D-3 FOR DRAINAGE DETAILS
 SEE SHEETS S03-1 THRU S03-30, S04-1 THRU S04-35,
 & S05-1 THRU S05-35 FOR STRUCTURE PLANS

REVISIONS

6/26/2015 2:40:06 PM \\SFB-CORP\BDD\RDY_PSH_10.DGN