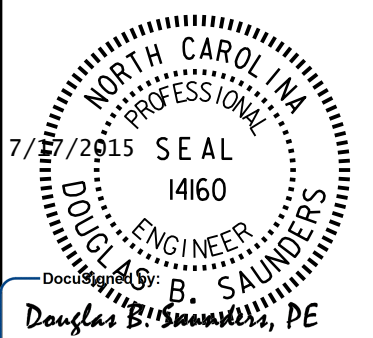
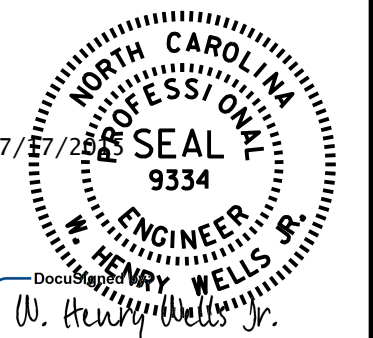


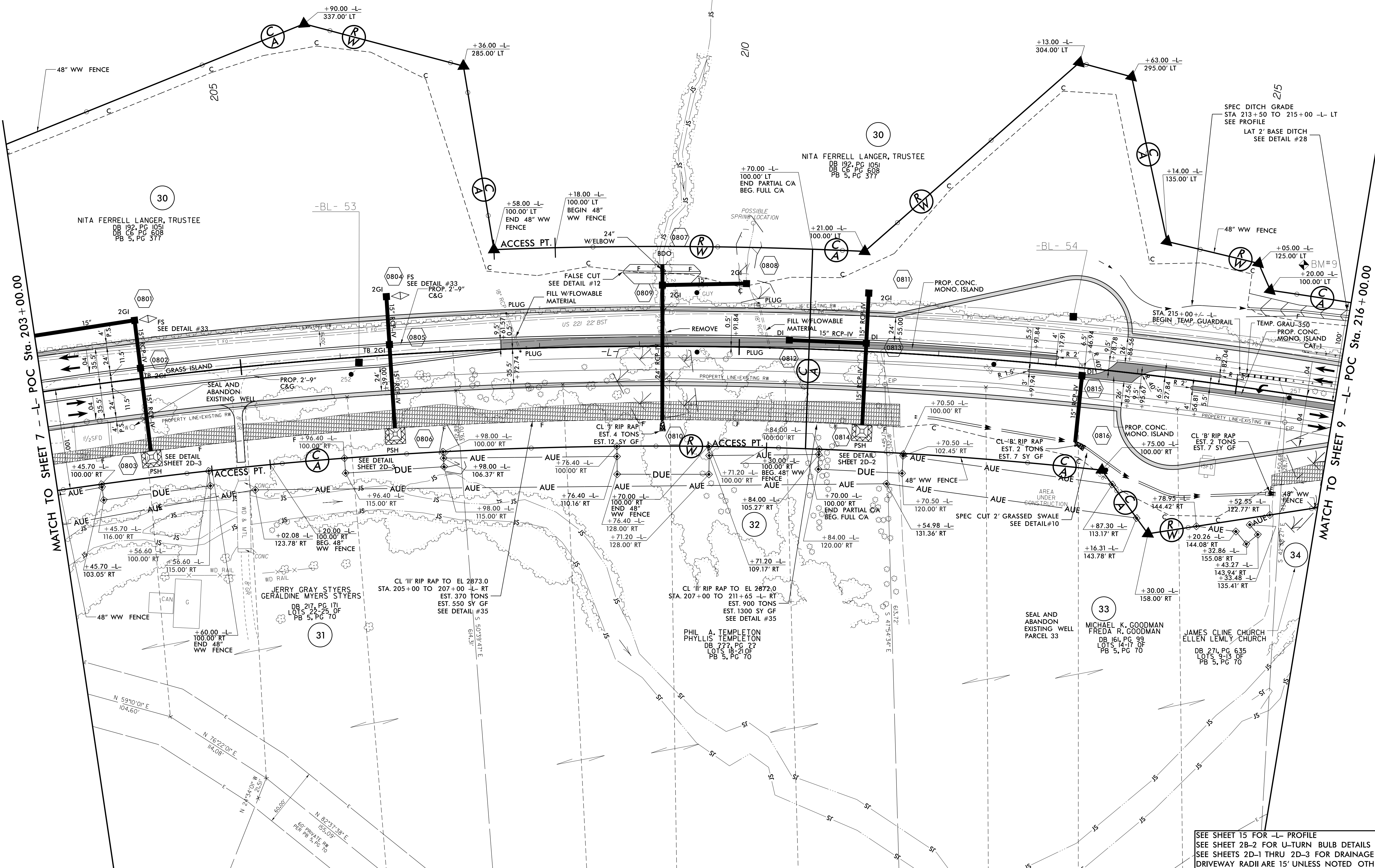
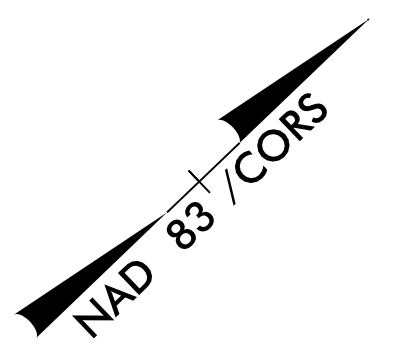


PROJECT REFERENCE NO. R-2915B		SHEET NO. 8
ROADWAY DESIGN ENGINEER		HYDRAULICS ENGINEER
 Douglas B. Salunke, PE		 Henry Wells, PE
 Camp Dresser & McKee 5401 Glenwood Avenue Suite 300 Raleigh, NC 27612-3228 NC CCA No. F-6412		 SUNGATE DESIGN GROUP, P.A. 215 CHASE FRANKLIN ROAD RALEIGH, NORTH CAROLINA 27614 NC CCA No. C-0890

CURVE DATA FOR LINE -L-		
Pls Sta 201+03.24	PI Sta 209+61.76	Pls Sta 218+09.53
$\Theta_s = 0^\circ 43' 22.4''$	$\Delta = 2^\circ 27' 22.7''$ (RT)	$\Theta_s = 1^\circ 26' 45.7''$
$L_s = 106.00'$	$D = 1^\circ 21' 51.1''$	$L_s = 212.00'$
$LT = 62.81'$	$L = 1,572.83'$	$LT = 141.34'$
$ST = 43.22'$	$T = 795.74'$	$ST = 70.67'$
	$R = 4,200.00'$	
	$SE = 0.04$	
	$RUNOFF = 212.00'$	



REVISIONS

SEE SHEET 15 FOR -L- PROFILE
 SEE SHEET 2B-2 FOR U-TURN BULB DETAILS
 SEE SHEETS 2D-1 THRU 2D-3 FOR DRAINAGE DETAILS
 DRIVEWAY RADII ARE 15' UNLESS NOTED OTHERWISE

5/14/99
 7/16/05 11:39 PM
 15156.dwg
 60' PRIVATE PW PER PB 5, PG 0