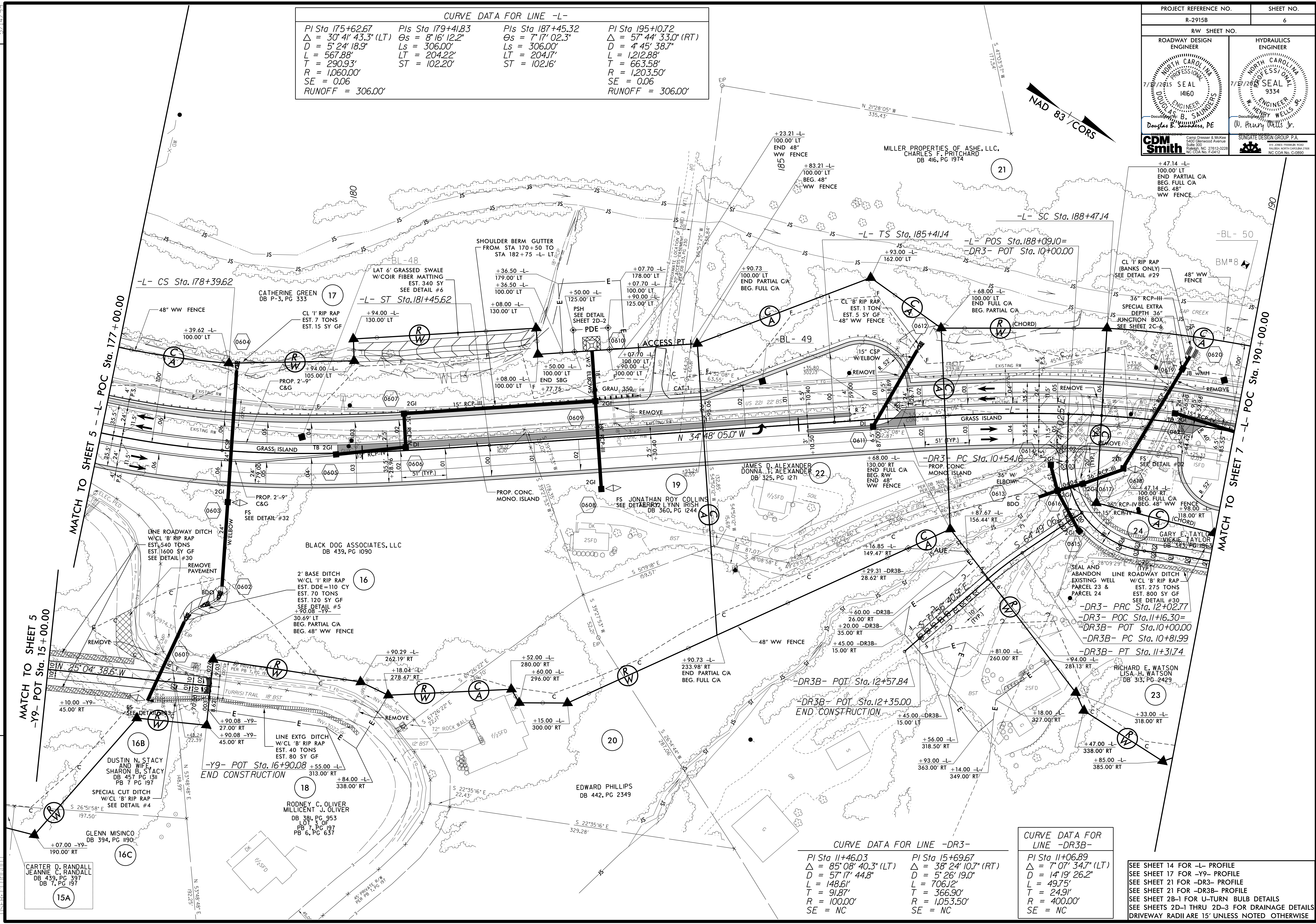
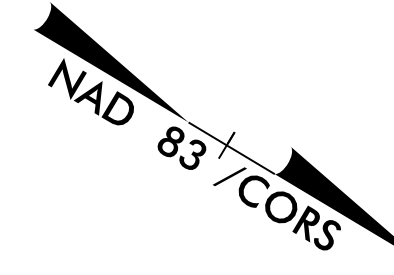


CURVE DATA FOR LINE -L-

PI Sta 175+62.67 Δ = 30° 41' 43.3" (LT) D = 5' 24' 18.9" L = 567.88' T = 290.93' R = 1,060.00' SE = 0.06 RUNOFF = 306.00'	PIs Sta 179+41.83 Θs = 8' 16' 12.2" Ls = 306.00' LT = 204.22' ST = 102.20'	PIs Sta 187+45.32 Θs = 7' 17' 02.3" Ls = 306.00' LT = 204.17' ST = 102.16'	PI Sta 195+10.72 Δ = 57° 44' 33.0" (RT) D = 4' 45' 38.7" L = 1,212.88' T = 663.58' R = 1,203.50' SE = 0.06 RUNOFF = 306.00'
--	--	--	--



REVISIONS

7/16/2015 10:05:36 AM H:\0636\B\B\ROY_PSH_06.DGN

CURVE DATA FOR LINE -DR3-

PI Sta 11+46.03 Δ = 85° 08' 40.3" (LT) D = 57' 17" 44.8" L = 148.61' T = 91.87' R = 100.00' SE = NC	PI Sta 15+69.67 Δ = 38° 24' 10.7" (RT) D = 5' 26' 19.0" L = 706.12' T = 366.90' R = 1,053.50' SE = NC
---	---

CURVE DATA FOR LINE -DR3B-

PI Sta 11+06.89 Δ = 7° 07' 34.7" (LT) D = 14' 19' 26.2" L = 49.75' T = 24.91' R = 400.00' SE = NC

SEE SHEET 14 FOR -L- PROFILE
SEE SHEET 17 FOR -Y9- PROFILE
SEE SHEET 21 FOR -DR3- PROFILE
SEE SHEET 21 FOR -DR3B- PROFILE
SEE SHEET 2B-1 FOR U-TURN BULB DETAILS
SEE SHEETS 2D-1 THRU 2D-3 FOR DRAINAGE DETAILS
DRIVEWAY RADII ARE 15' UNLESS NOTED OTHERWISE