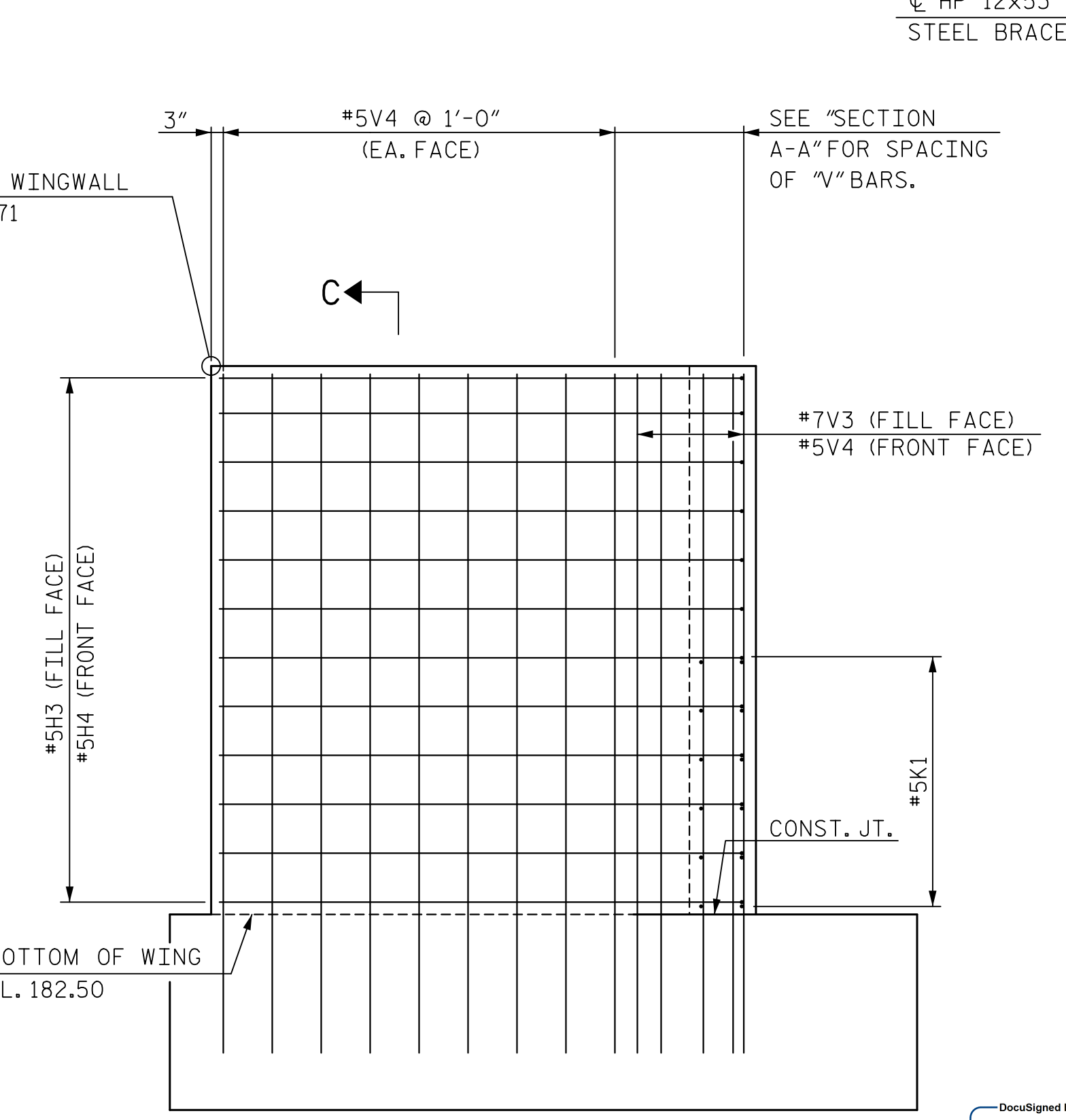
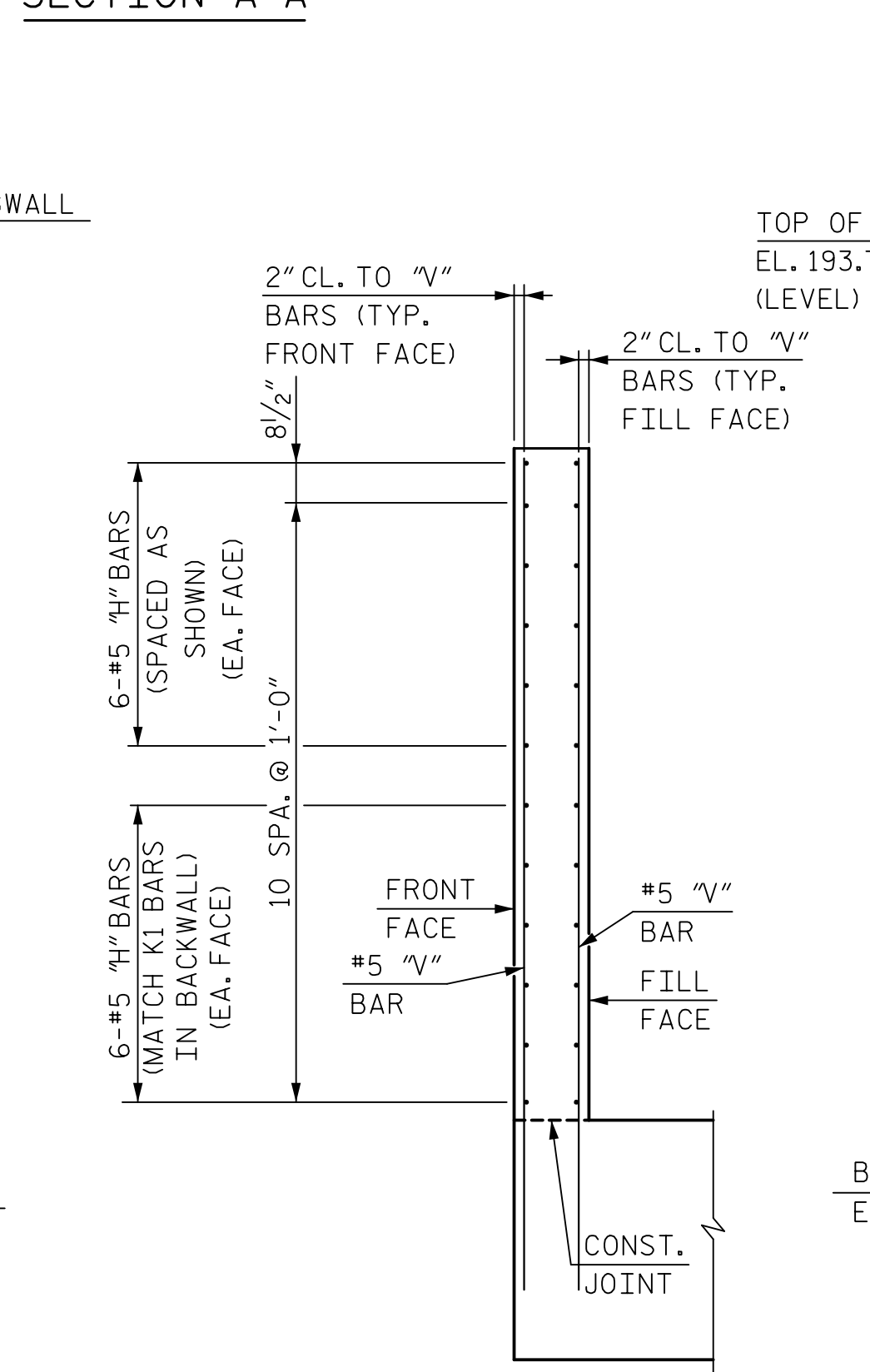
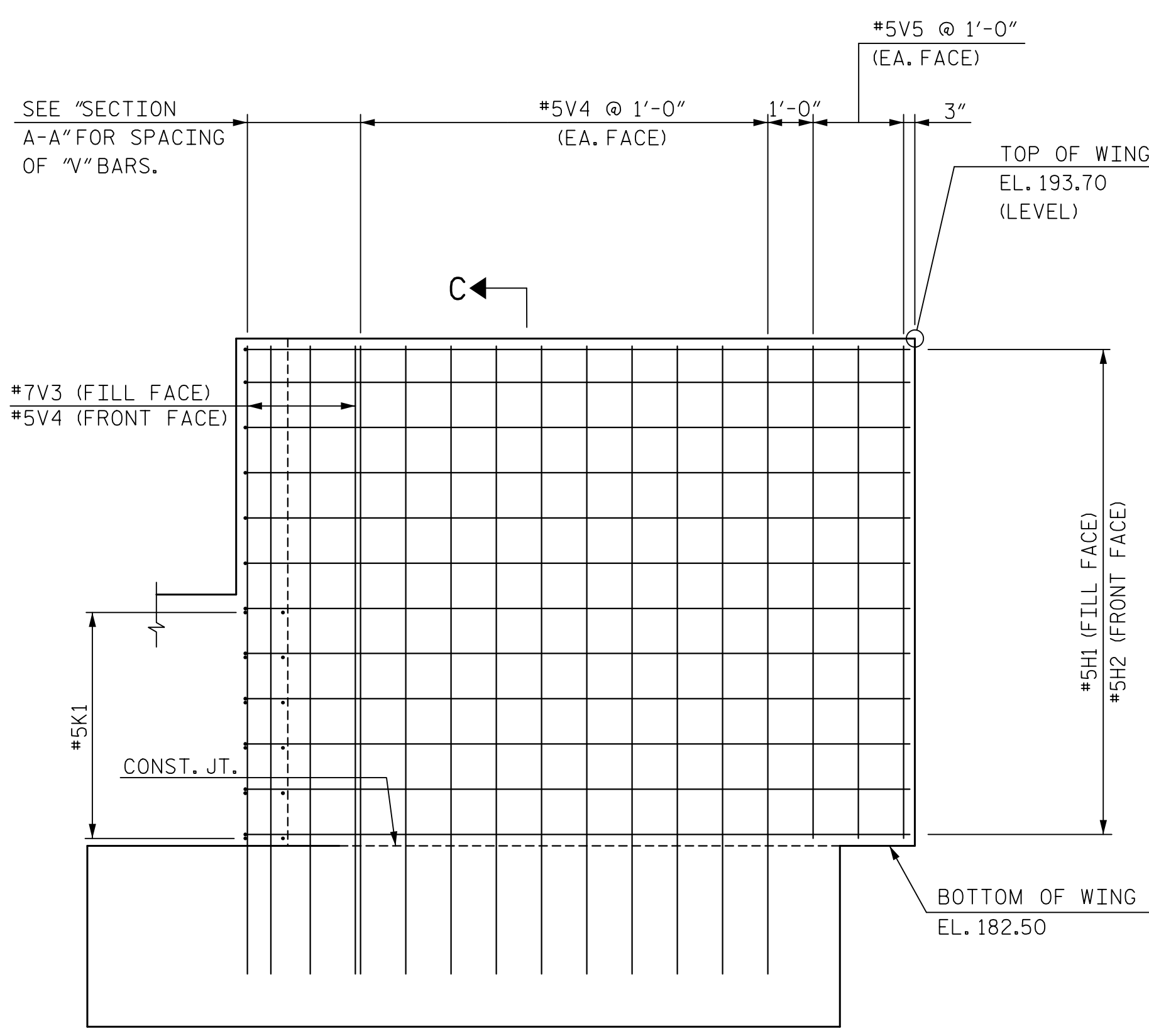
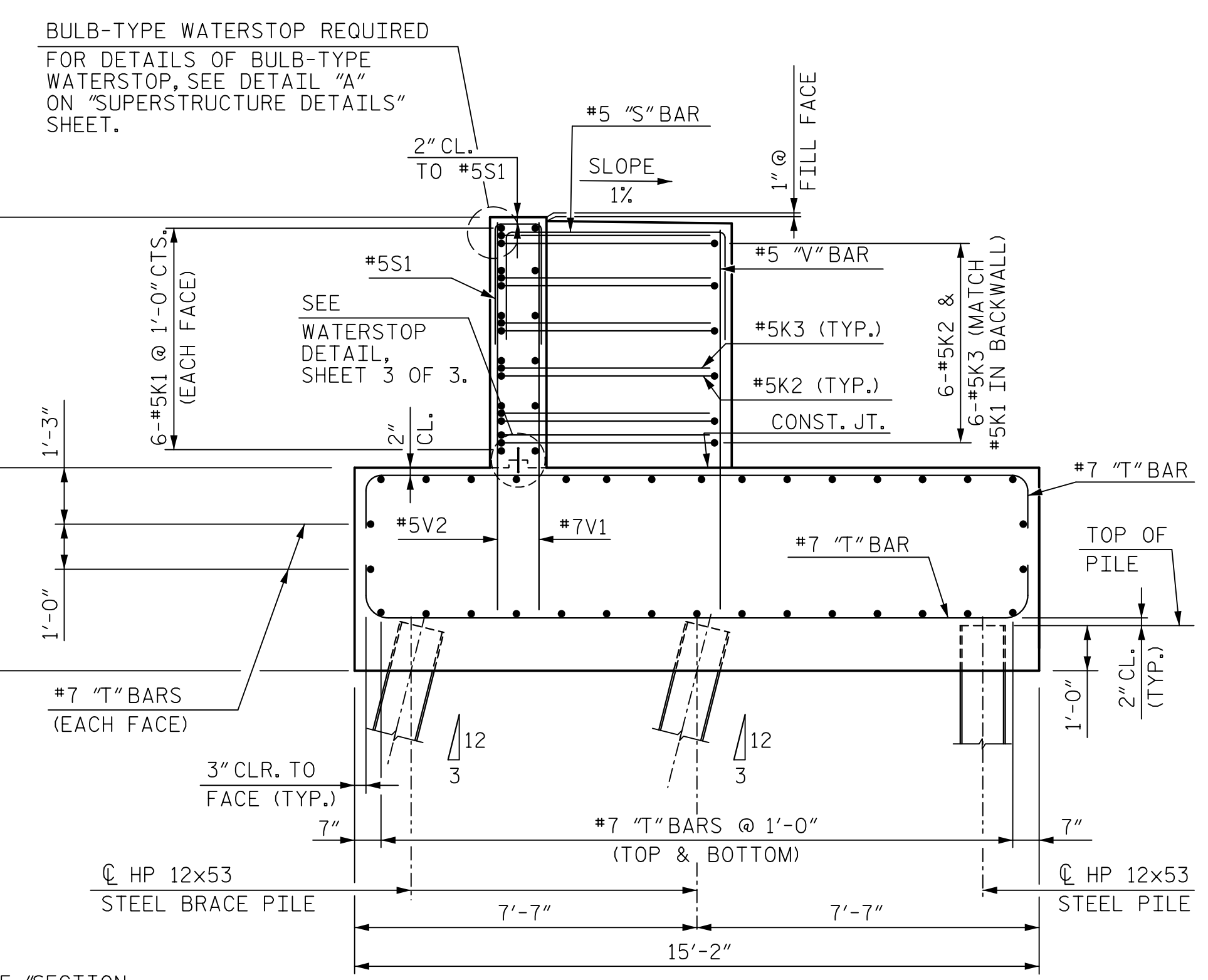
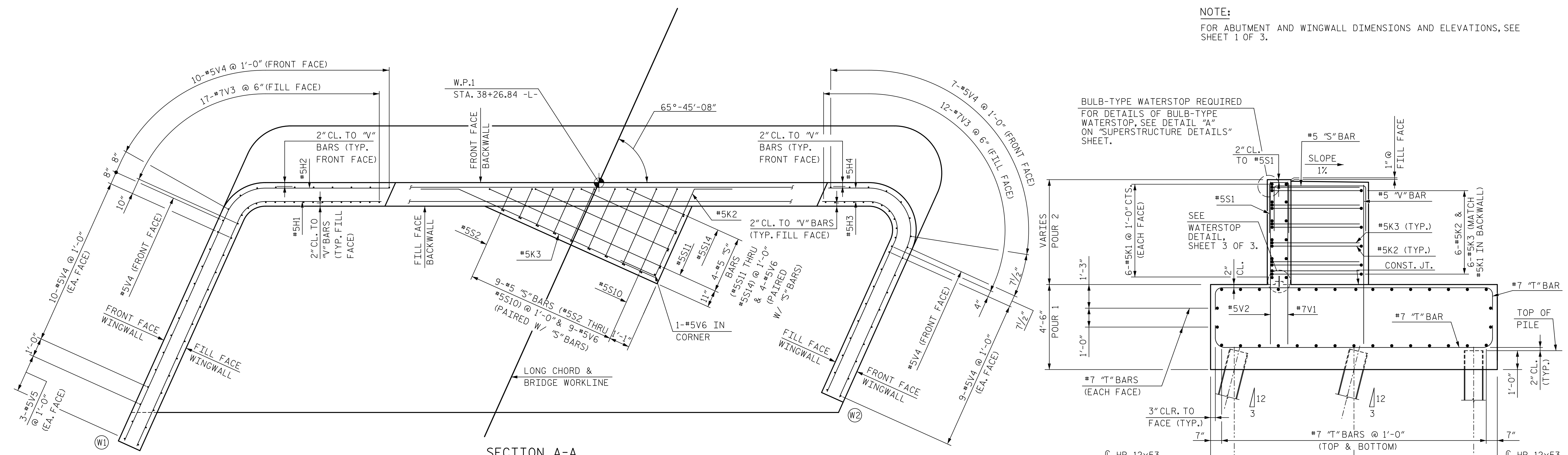


NOTE:
FOR ABUTMENT AND WINGWALL DIMENSIONS AND ELEVATIONS, SEE SHEET 1 OF 3.



PROJECT NO. P-4900A
ROBESON COUNTY
STATION: POC 38+93.36 -L-
MILE POST: 0.55
SHEET 2 OF 3

STATE OF NORTH CAROLINA
DEPARTMENT OF TRANSPORTATION
RALEIGH
SUBSTRUCTURE
ABUTMENT 1

DocuSigned by:
Paul J. Barber
180F18B738B741E...
NORTH CAROLINA PROFESSIONAL ENGINEER
SEAL 12916
PAUL J. BARBER
2/27/2015

DocuSigned by:
David W. Hawkins
180F18B738B741E...
NORTH CAROLINA PROFESSIONAL ENGINEER
SEAL 27812
DAVID W. HAWKINS
2/27/2015

| | | | | |
|---|------------|-----------|-------|---------------------------|
| HNTB HNTB NORTH CAROLINA, P.C. License No. C-1554 343 E. Six Forks Rd., Suite 200, Raleigh, N.C. 27609 | | REVISIONS | | SHEET NO. S-40 |
| DRAWN BY: M. WRIGHT | DATE: 7/14 | NO. 3 | BY: | TOTAL SHEETS 54 |
| CHECKED BY: D. RAGAN | DATE: 9/14 | NO. 4 | DATE: | |
| DWG. NO. 21 | | | | |