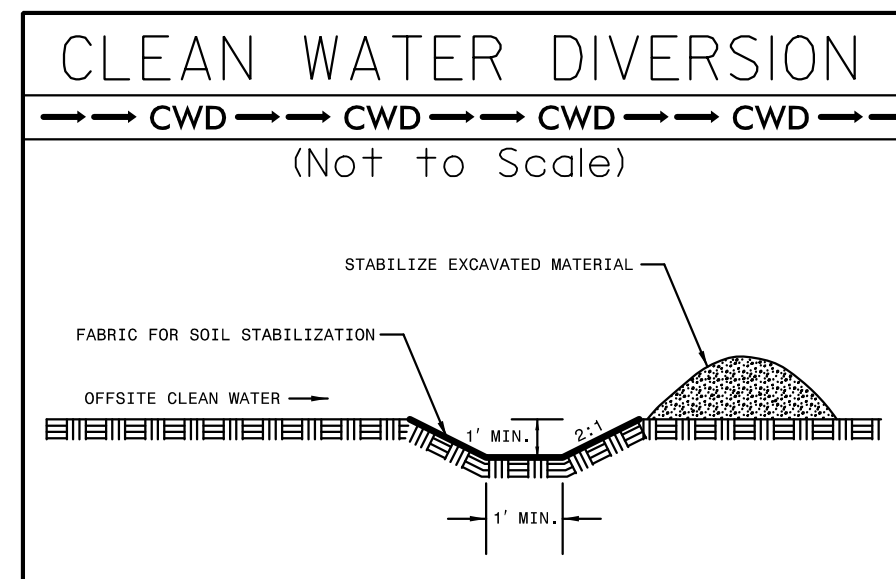
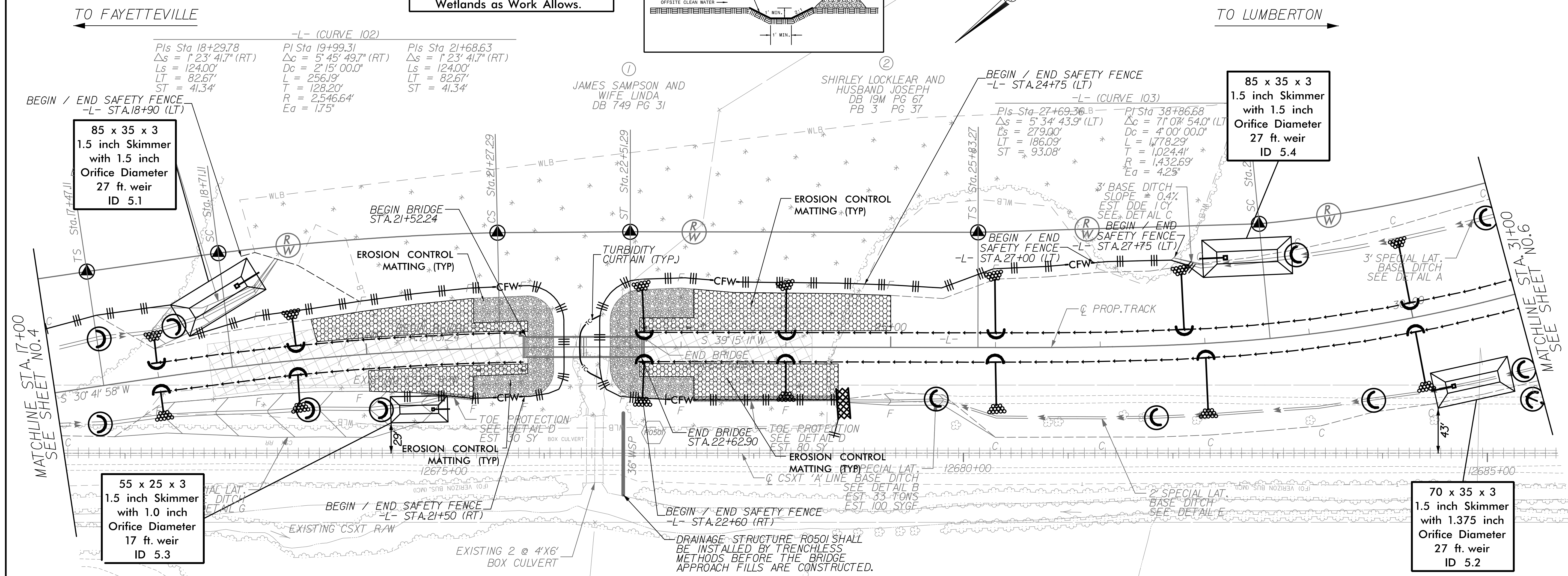


PROJECT REFERENCE NO.	SHEET NO.
P-4900A	EC-15/CONST.05
RW SHEET NO.	
RAILROAD DESIGN ENGINEER	HYDRAULICS ENGINEER

DATE: JANUARY 19, 2015



Place Matting for Erosion Control on Slopes Adjacent to Permitted Wetlands as Work Allows.



TO FAYETTEVILLE

TO LUMBERTON

-L- (CURVE 102)
 Pls Sta 18+29.78 P/ Sta 19+99.31 Pls Sta 21+68.63
 $\Delta s = 1' 23' 41.7''$ (RT) $\Delta c = 5' 45' 49.7''$ (RT) $\Delta s = 1' 23' 41.7''$ (RT)
 $L_s = 124.00'$ $D_c = 2' 15' 00.0''$ $L_s = 124.00'$
 $LT = 82.67'$ $L = 256.19'$ $LT = 82.67'$
 $ST = 41.34'$ $T = 128.20'$ $ST = 41.34'$
 $R = 2,546.64'$ $Ea = 1.75'$

BEGIN / END SAFETY FENCE
 -L- STA.24+75 (LT)

85 x 35 x 3
 1.5 inch Skimmer
 with 1.5 inch
 Orifice Diameter
 27 ft. weir
 ID 5.4

85 x 35 x 3
 1.5 inch Skimmer
 with 1.5 inch
 Orifice Diameter
 27 ft. weir
 ID 5.1

55 x 25 x 3
 1.5 inch Skimmer
 with 1.0 inch
 Orifice Diameter
 17 ft. weir
 ID 5.3

70 x 35 x 3
 1.5 inch Skimmer
 with 1.375 inch
 Orifice Diameter
 27 ft. weir
 ID 5.2

DRAINAGE STRUCTURE R0501 SHALL BE INSTALLED BY TRENCHLESS METHODS BEFORE THE BRIDGE APPROACH FILLS ARE CONSTRUCTED.

-L-