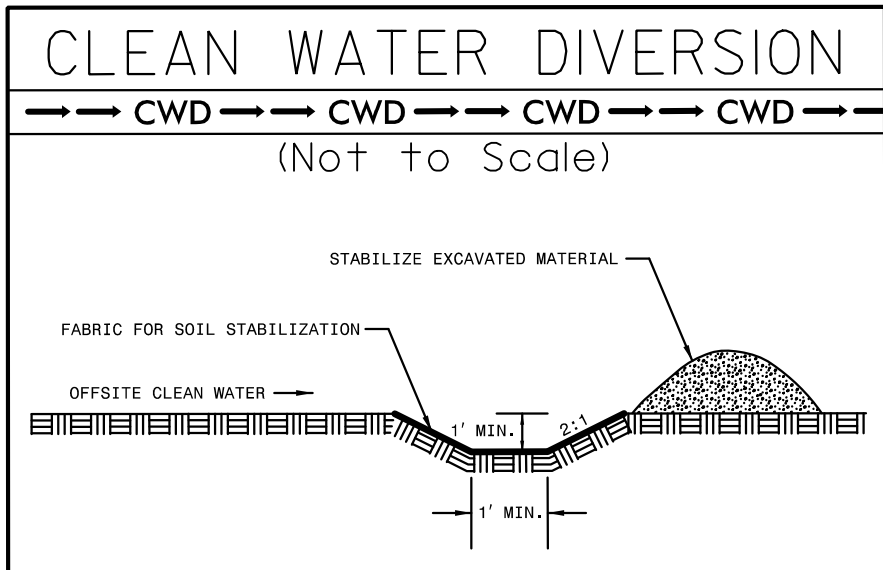


PROJECT REFERENCE NO.	SHEET NO.
P-4900A	EC-08/CONST.08
RW SHEET NO.	
RAILROAD DESIGN ENGINEER	HYDRAULICS ENGINEER

DATE: JANUARY 19, 2015

CLEARING AND GRUBBING
 EROSION CONTROL FOR
 CONSTRUCTION SHEET 08



INSTALL PIPE(S) IN JURISDICTIONAL AREAS WITHOUT IMPACTING STREAM UNTIL AREA STABILIZED AND ACCORDING TO NCDOT BEST MANAGEMENT PRACTICES FOR CONSTRUCTION AND MAINTENANCE ACTIVITIES MANUAL.

TO FAYETTEVILLE

NO VEHICULAR OR PEDESTRIAN ACCESS TO PARCEL REMNANTS NORTH OF PROPOSED RAILROAD RIGHT-OF-WAY.

60 x 25 x 3
 1.5 inch Skimmer
 with 1.125 inch
 Orifice Diameter
 17 ft. weir
 ID 8.3

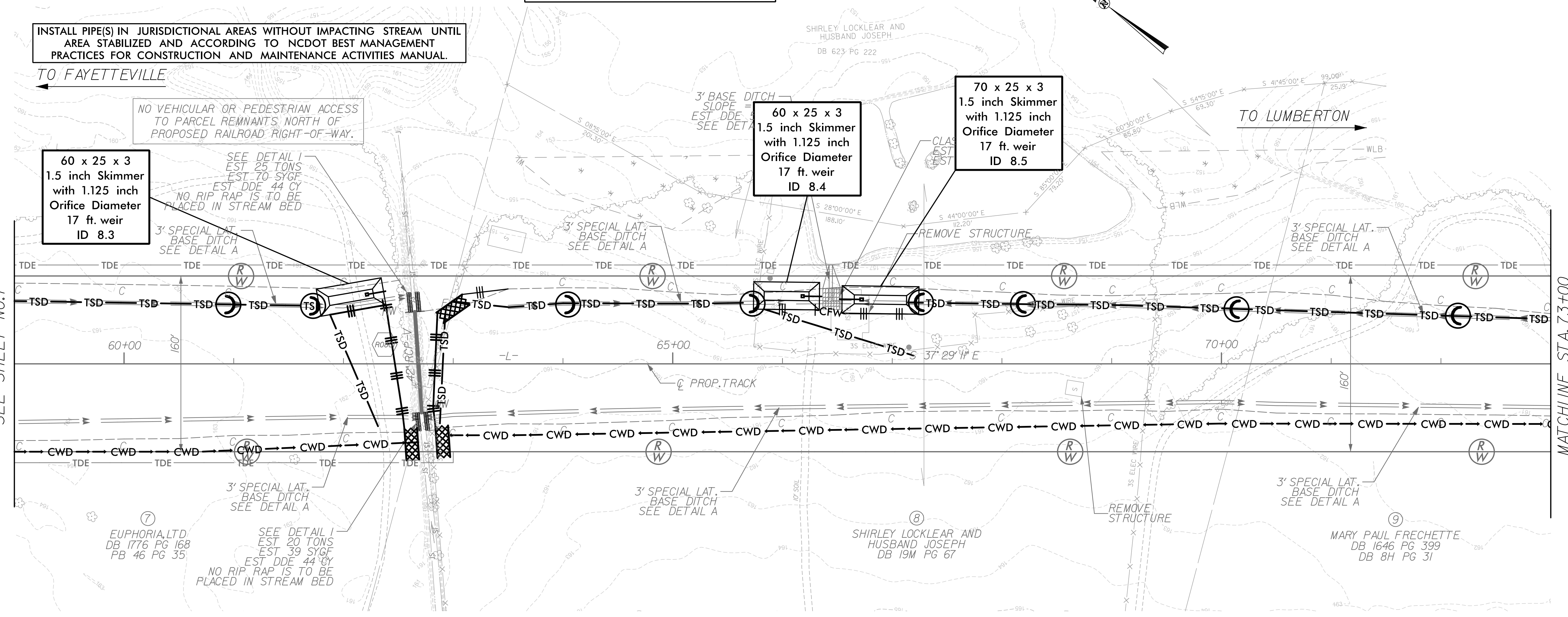
60 x 25 x 3
 1.5 inch Skimmer
 with 1.125 inch
 Orifice Diameter
 17 ft. weir
 ID 8.4

70 x 25 x 3
 1.5 inch Skimmer
 with 1.125 inch
 Orifice Diameter
 17 ft. weir
 ID 8.5

TO LUMBERTON

MATCHLINE STA. 59+00
 SEE SHEET NO. 7

MATCHLINE STA. 73+00
 SEE SHEET NO. 9



-L-