

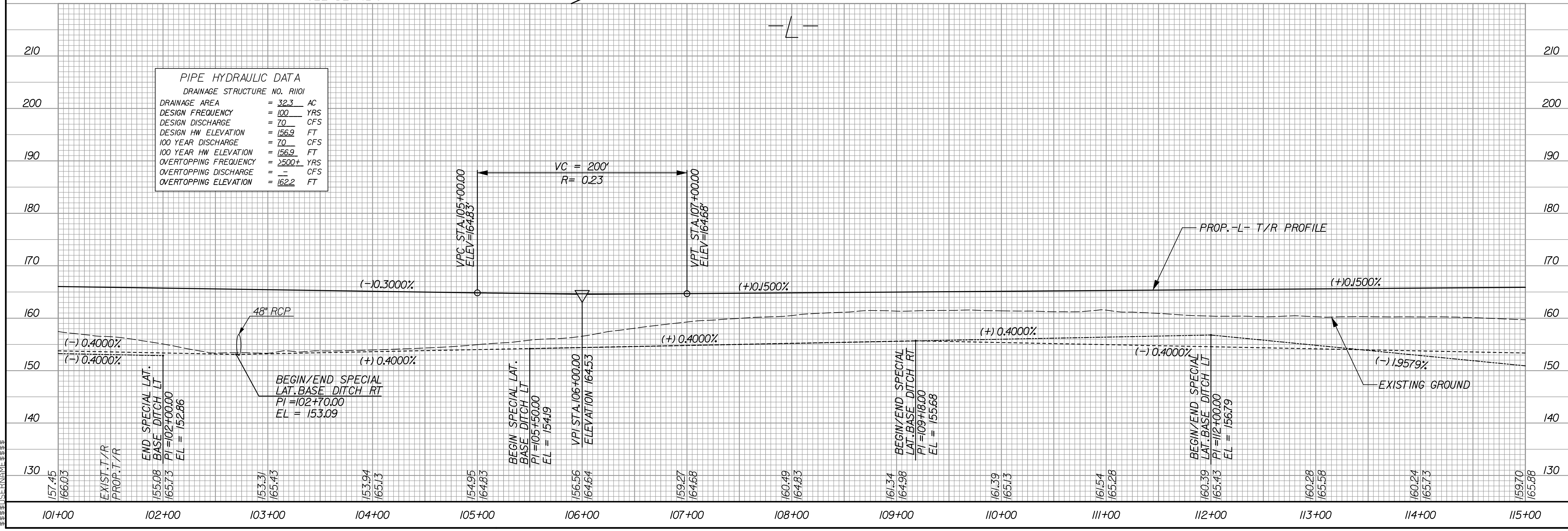
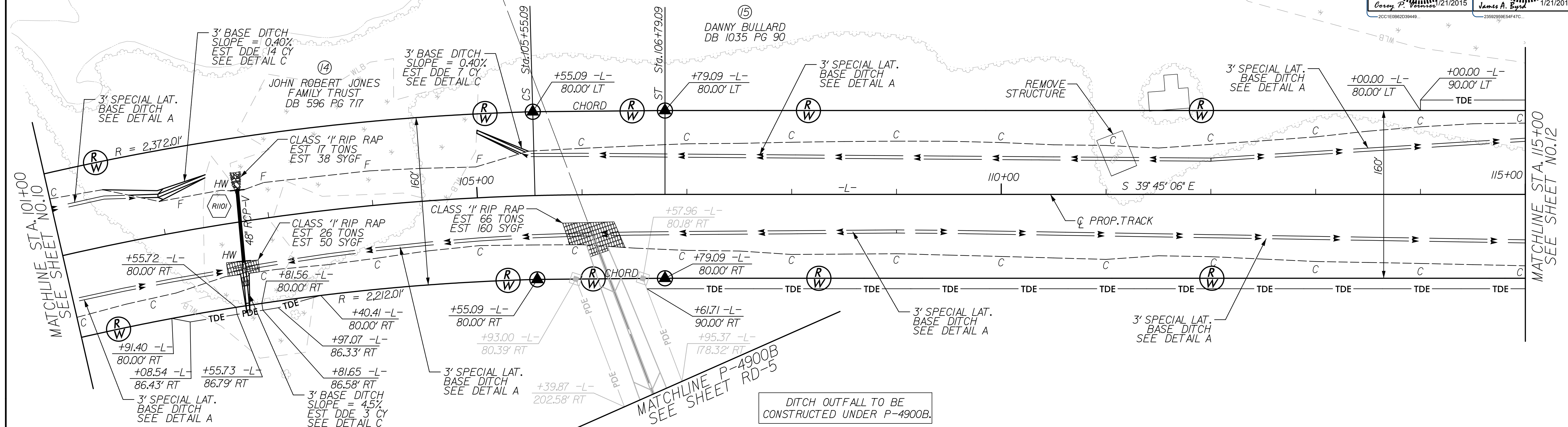
DATE: JANUARY 19, 2015

TO FAYETTEVILLE

TO LUMBERTON

-L- (CURVE 106)  
PI Sta 102+89.70 Δc = 13° 19' 51.7" (RT) Dc = 2' 30' 00.0" L = 533.24' T = 267.85' R = 2,292.01' Ea = 2.00'  
PIs Sta 105+96.43 Δs = 1° 32' 59.6" (RT) Ls = 124.00' LT = 82.67' ST = 41.34'

NO VEHICULAR OR PEDESTRIAN ACCESS TO PARCEL REMNANTS NORTH OF PROPOSED RAILROAD RIGHT-OF-WAY.



PIPE HYDRAULIC DATA	
DRAINAGE STRUCTURE NO. R1101	
DRAINAGE AREA	= 32.3 AC
DESIGN FREQUENCY	= 100 YRS
DESIGN DISCHARGE	= 70 CFS
DESIGN HW ELEVATION	= 156.9 FT
100 YEAR DISCHARGE	= 70 CFS
100 YEAR HW ELEVATION	= 156.9 FT
OVERTOPPING FREQUENCY	= 2500+ YRS
OVERTOPPING DISCHARGE	= - CFS
OVERTOPPING ELEVATION	= 162.2 FT

6:33:03 PM W:\embrace\_psh\_11.dgn