

**This electronic collection of documents is provided
for the convenience of the user
and is Not a Certified Document –**

**The documents contained herein were originally issued
and sealed by the individuals whose names and license
numbers appear on each page, on the dates appearing
with their signature on that page.**

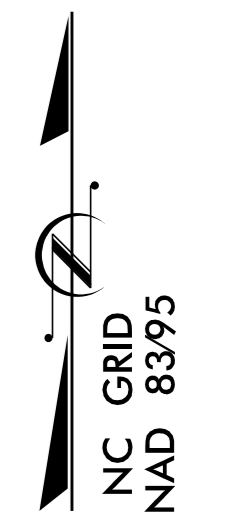
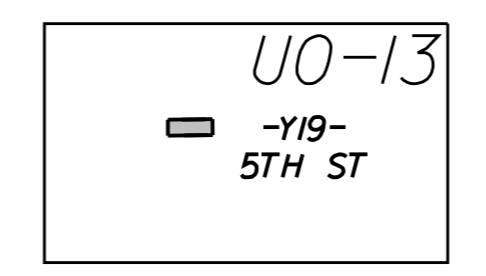
**This file or an individual page
shall not be considered a certified document.**

STATE OF NORTH CAROLINA
DIVISION OF HIGHWAYS

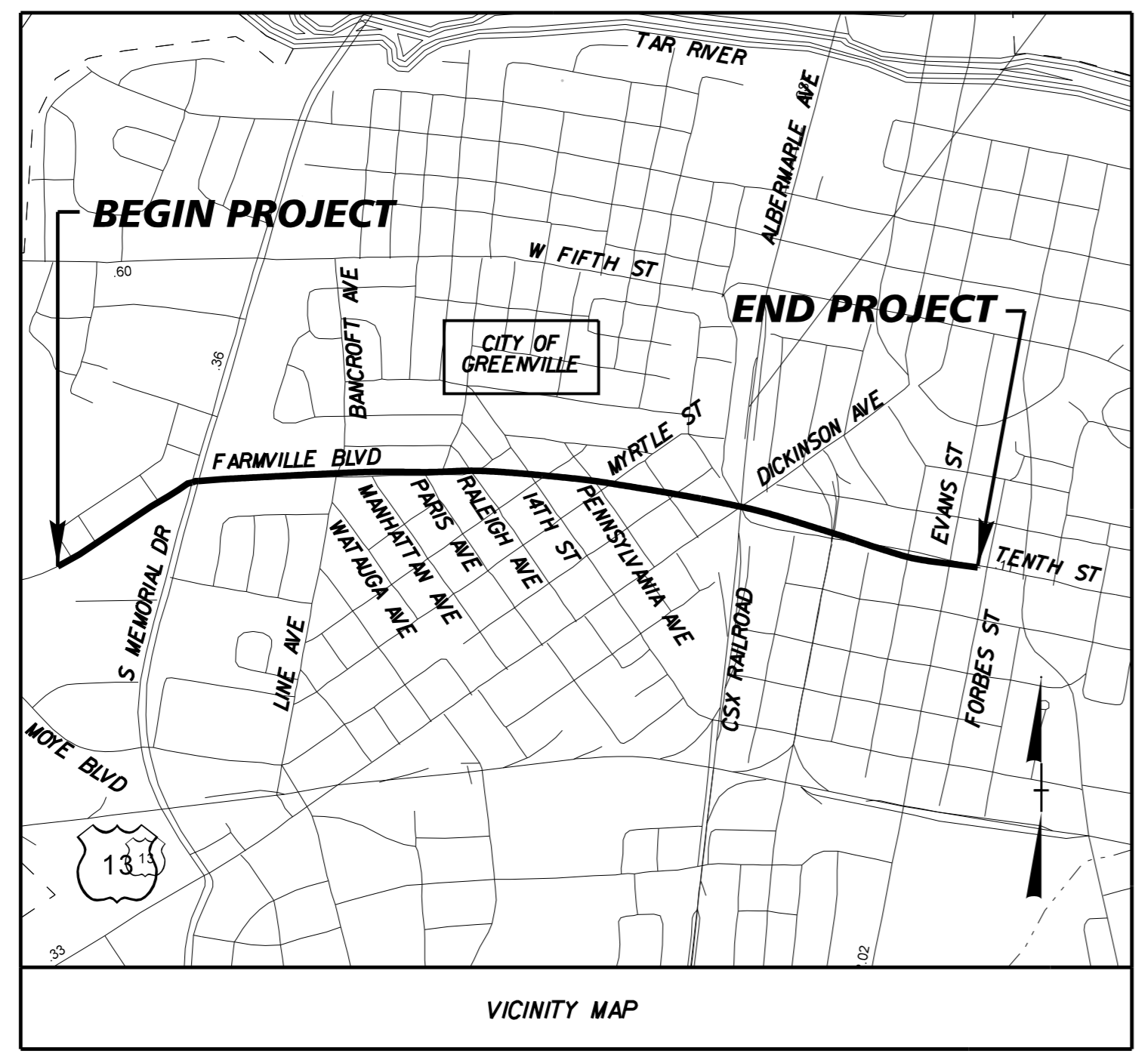
PITT COUNTY

**LOCATION: STANTONSBURG ROAD - TENTH STREET CONNECTOR
FROM US 13/NC 11 (MEMORIAL DRIVE) TO SR 1702 (EVANS STREET)**

TYPE OF WORK: UTILITY RELOCATIONS

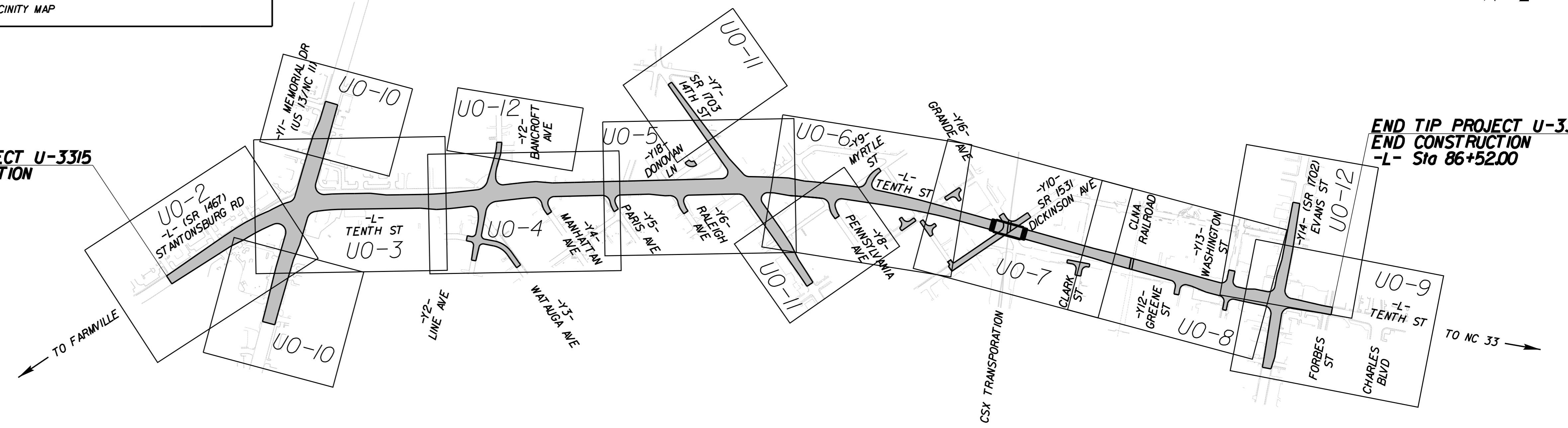


TIP PROJECT: U-3315



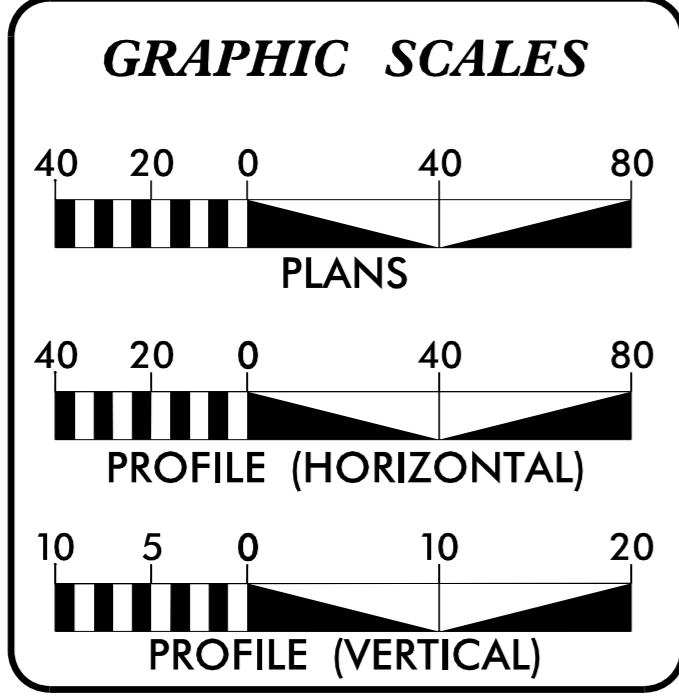
**BEGIN TIP PROJECT U-3315
BEGIN CONSTRUCTION
-L- Sta 11+32.00**

**END TIP PROJECT U-3315
END CONSTRUCTION
-L- Sta 86+52.00**



K:\RAL_Roadway\01036175 (U-3315)\Roadway\Proj\Utilities By Other\U3315_rdy_UO-TSH.dgn 5/7/2015

CONTRACT:



INDEX OF SHEETS

SHEET NO.	DESCRIPTION
UO-1	TITLE SHEET
UO-2 TO UO-13	UO PLAN SHEETS

UTILITY OWNERS ON PROJECT

GREENVILLE UTILITIES - ELECTRIC:	BRIAN MURPHY 252-329-2173 MURPHYBA@GUC.COM
SUDDENLINK COMMUNICATIONS	TRENT JERNIGAN 252-757-2256 TRENT.JERNIGAN@SUDDENLINK.COM
CENTURYLINK	ROD MEDLIN 252-413-7711 ROD.M.MEDLIN@CENTURYLINK.COM

UTILITY DESIGN BY:

Kimley»Horn

© 2014 Post Office Box 33068
Raleigh, North Carolina 27636
PE, NG, F-0102

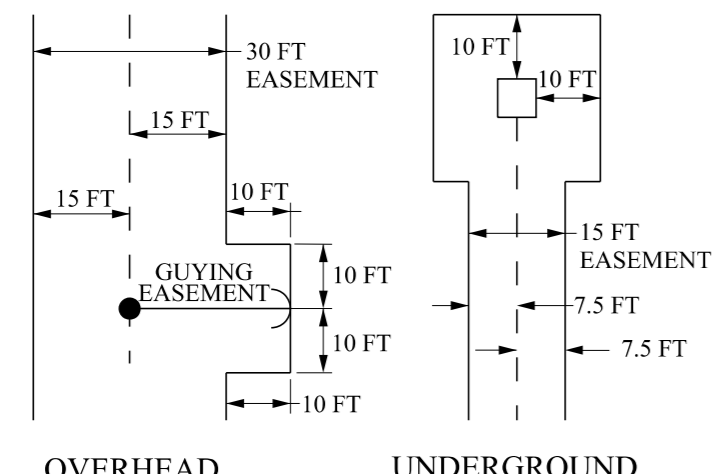
NCDOT PROJECT ENGINEER:
RONALD B. WILKINS, P.E.

PREPARED FOR:
NORTH CAROLINA
DEPARTMENT OF TRANSPORTATION
UTILITIES UNIT
RALEIGH, NC

NOTES:

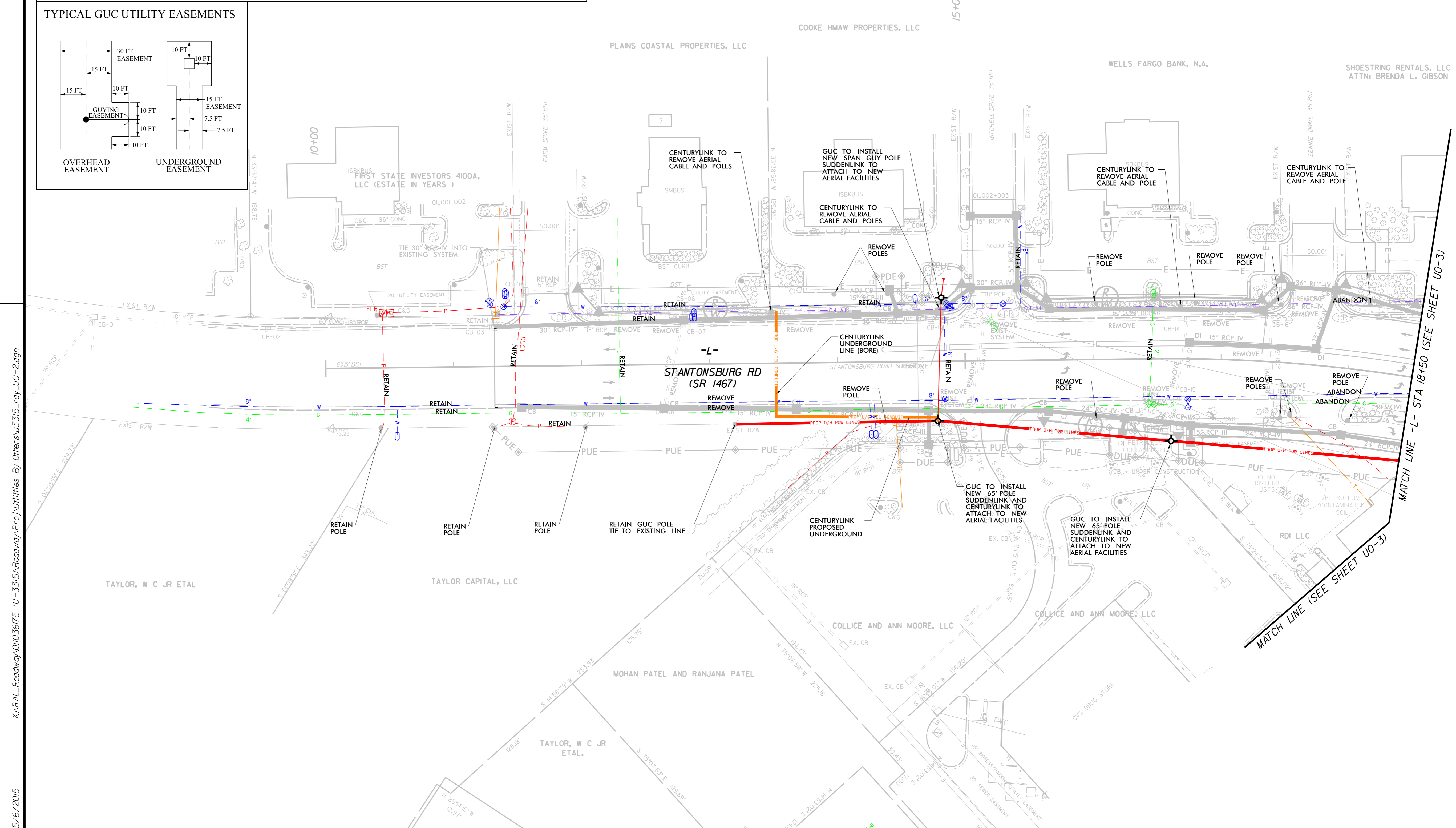
- CENTURYLINK AND SUDDENLINK COMMUNICATIONS TO RELOCATE EXISTING FACILITIES TO NEW GREENVILLE UTILITIES COMMISSION(GUC) POLES AND REMOVE EXISTING POLES AS NEEDED. GUC, CENTURYLINK, AND SUDDENLINK TO INSTALL PROPOSED UNDERGROUND BORES AT LOCATIONS SHOWN ON PLANS AND AS NEEDED.
- GUC TO CONTACT NCDOT TO STAKE PROPOSED SIGNAL POLE LOCATIONS PRIOR TO INSTALLING PROPOSED UTILITY POLES.
- PROPOSED SANITARY SEWER IS SHOWN FOR REFERENCE ONLY. THESE UTILITIES WILL BE CONSTRUCTED AFTER PROJECT IS LET.
- ALL PROPOSED UTILITY WORK SHOWN ON THESE SHEETS SHALL BE DONE BY OTHERS EXCEPT FOR SANITARY SEWER.
- CONTRACTOR TO EXPOSE FIBER OPTIC CABLES AND COORDINATE THEIR ADJUSTMENT WITH UTILITY COMPANIES BEFORE STORMDRAIN CONSTRUCTION.
- POLES WITHIN PROJECT LIMITS TO BE REMOVED BY OWNER. SEE LOCATIONS ON PLANS.

TYPICAL GUC UTILITY EASEMENTS



REVISIONS

NAD 83/95



K:\PAL_Roadway\01036175 U-3315\Roadway\Pro\Utilities By Others\U0-2.dgn

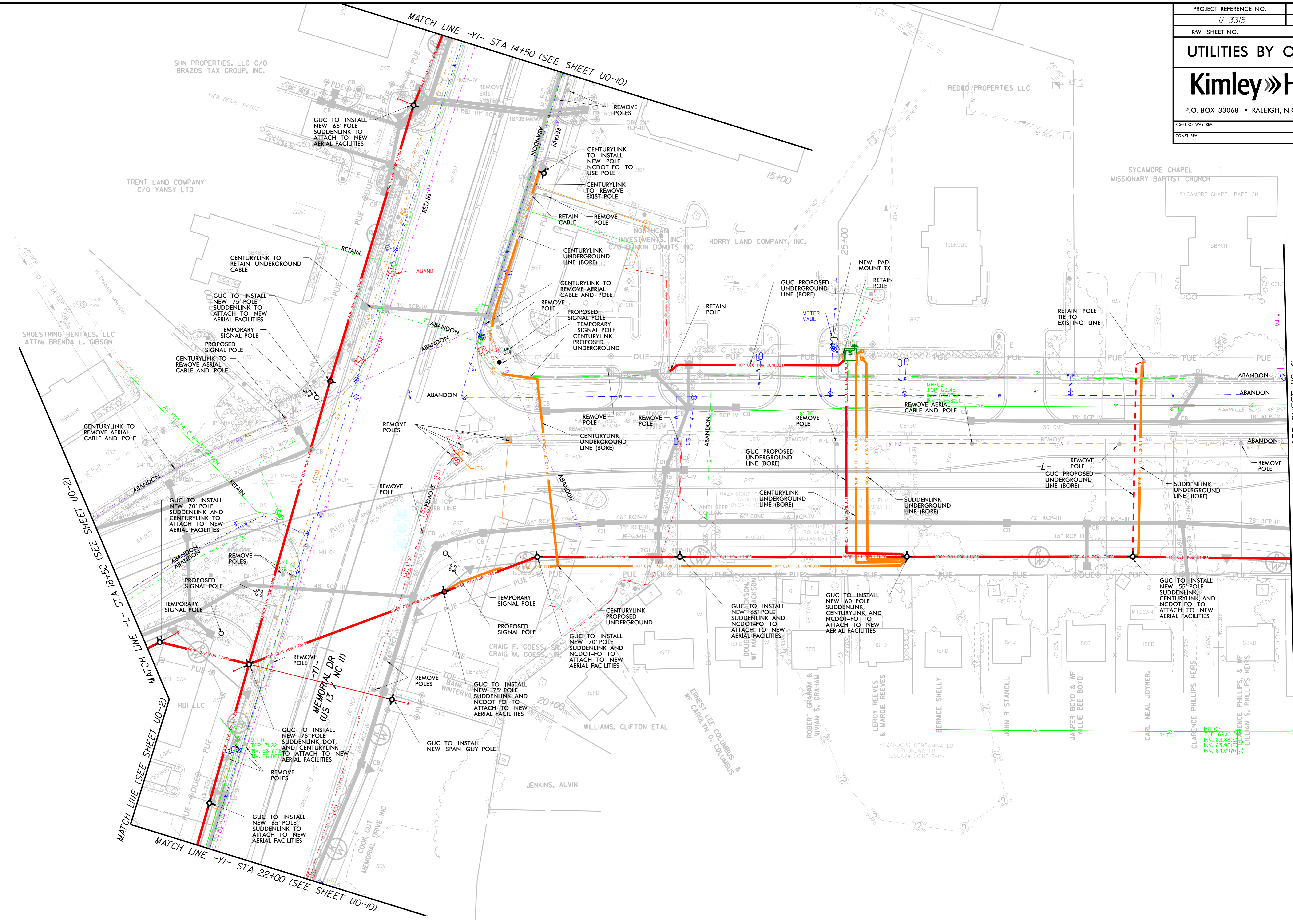
5/6/2015

MATCH LINE -L- STA 18+50 (SEE SHEET U0-3)

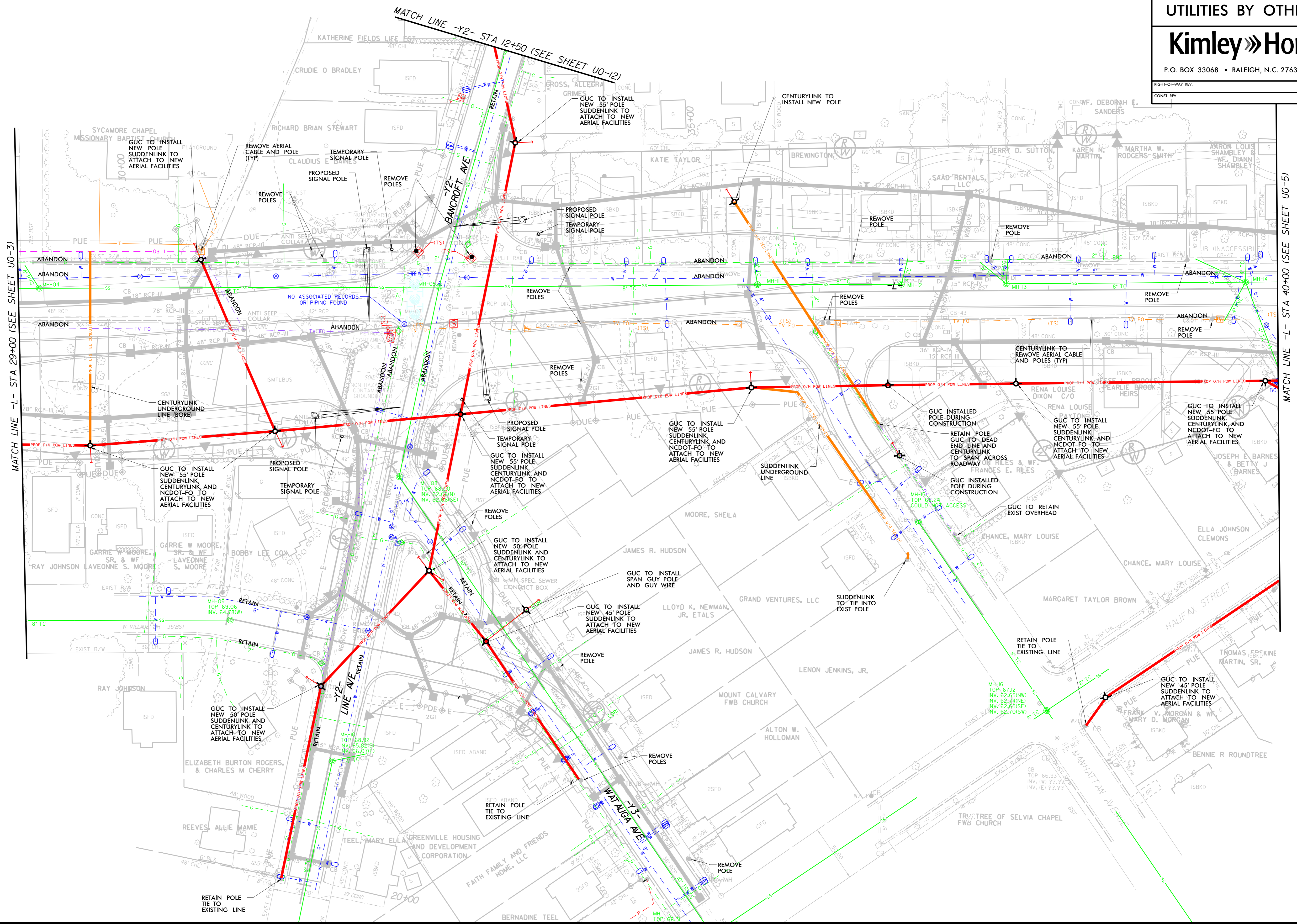
MATCH LINE (SEE SHEET U0-3)

PROJECT REFERENCE NO.	SHEET NO.
U-3315	U0-3
RW SHEET NO.	
UTILITIES BY OTHERS	
Kimley»Horn	
P.O. BOX 33068 • RALEIGH, N.C. 27636-3068	
RIGHT-OF-WAY REV.	
CONST. REV.	

NAD 83/95

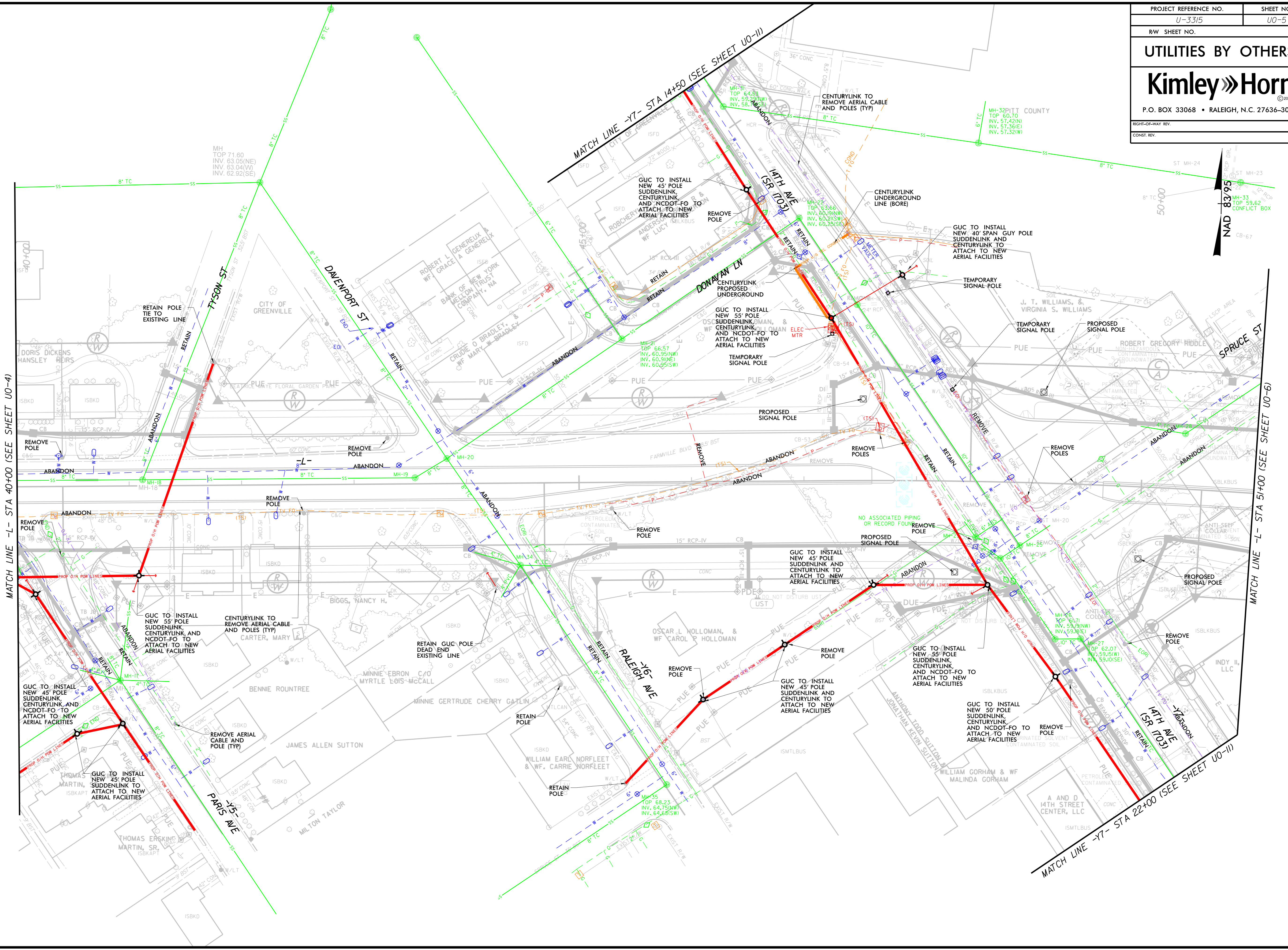


K:\RAL_Roadway\01036715 U-3315\Roadway\Pro\Utilities By Others\U3315_rdy_U0-3.dgn 5/6/2015



NAD 83/95

PROJECT REFERENCE NO.	SHEET NO.
U-3315	U0-5
RW SHEET NO.	
UTILITIES BY OTHERS	
Kimley»Horn	
P.O. BOX 33068 • RALEIGH, N.C. 27636-3068	
RIGHT-OF-WAY REV.	
CONST. REV.	



MATCH LINE -L- STA 40+00 (SEE SHEET U0-4)

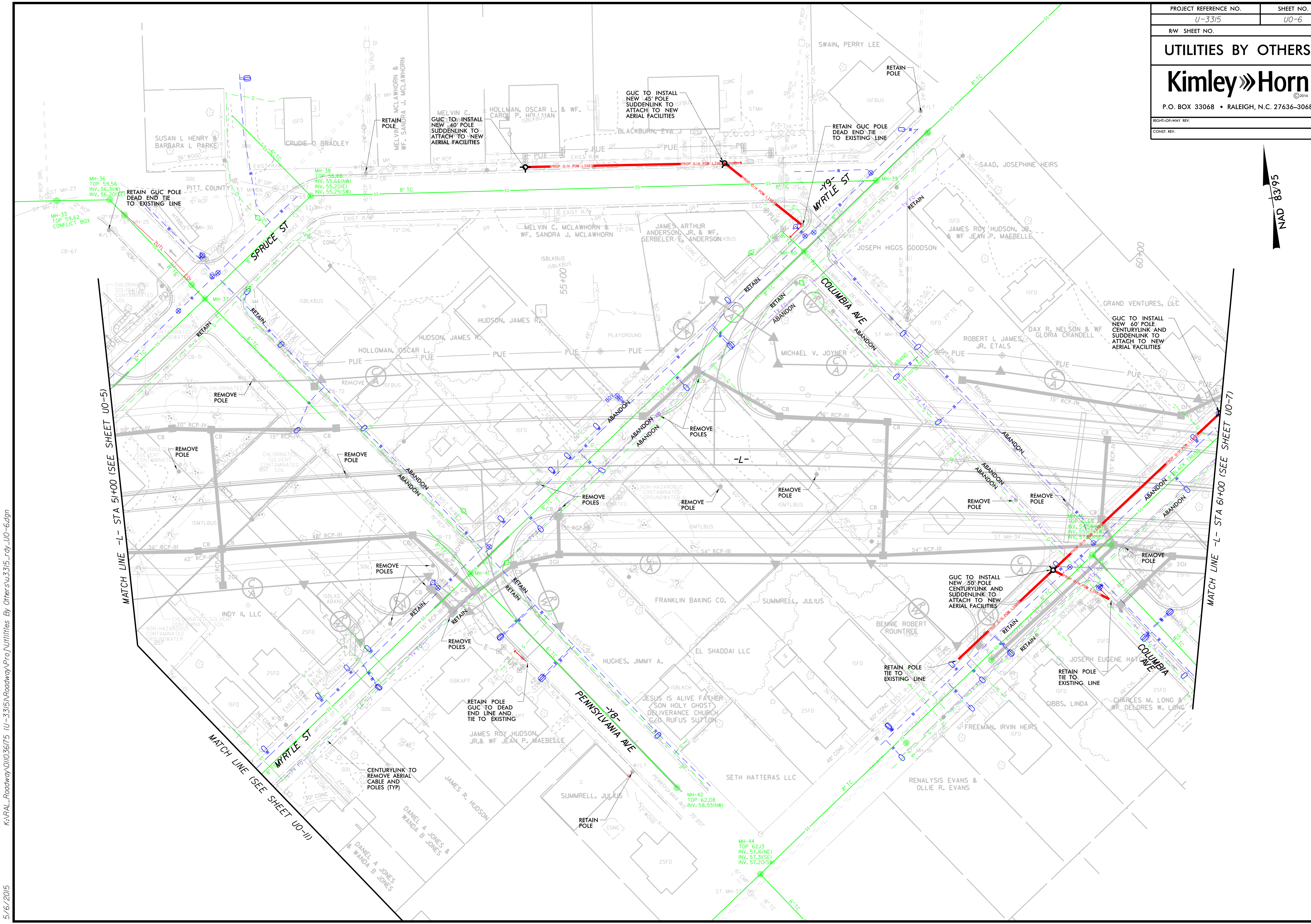
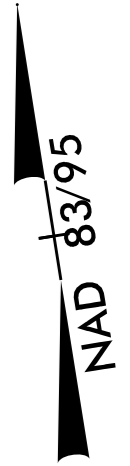
MATCH LINE -L- STA 51+00 (SEE SHEET U0-6)

MATCH LINE -Y7- STA 22+00 (SEE SHEET U0-11)

MATCH LINE -Y7- STA 14+50 (SEE SHEET U0-11)

K:\RAL_Roadway\01036715 U-3315\Roadway\Pro\Utilities By Others\U3315_rdy_U0-5.dgn

5/6/2015



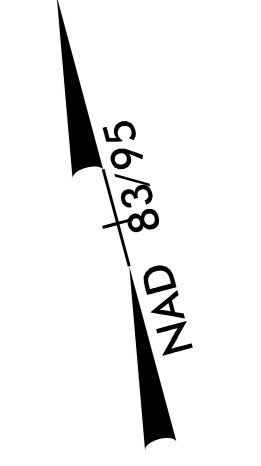
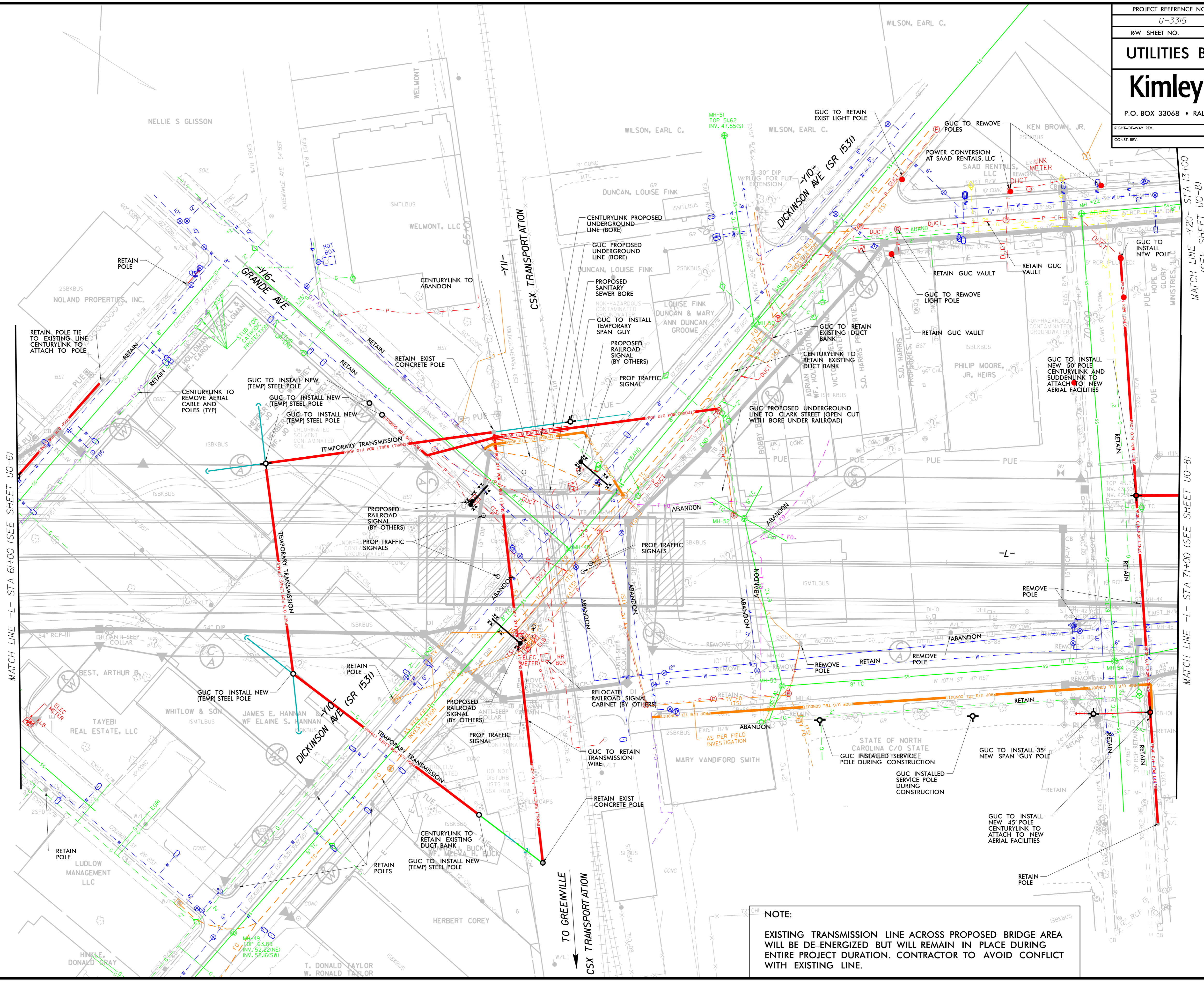
MATCH LINE -L- STA 51+00 (SEE SHEET U0-5)

MATCH LINE -L- STA 61+00 (SEE SHEET U0-7)

MATCH LINE (SEE SHEET U0-11)

K:\RAL_Roadway\01036715 U-3315\Roadway\Pro\Utilities By Others\U3315_rdy_U0-6.dgn

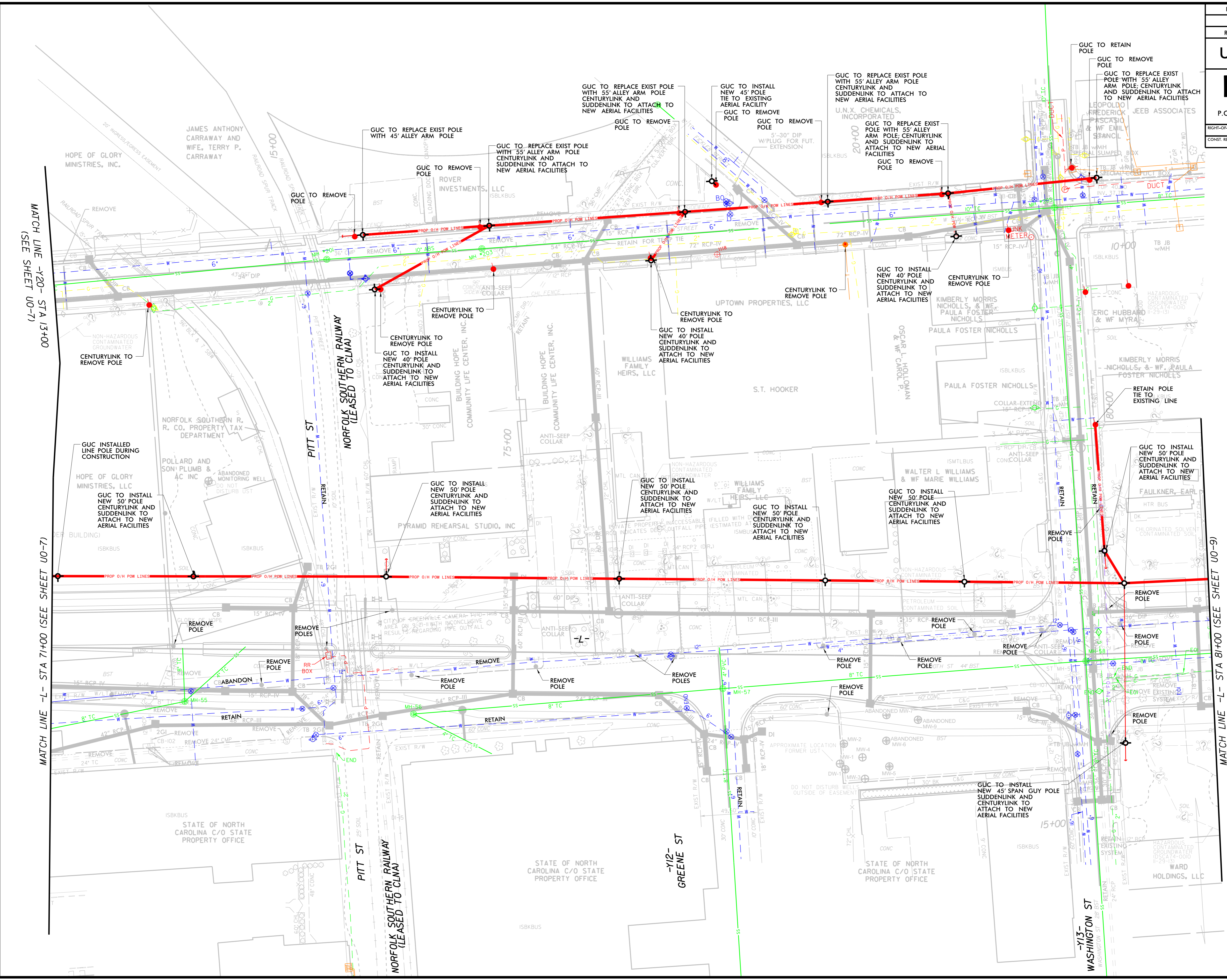
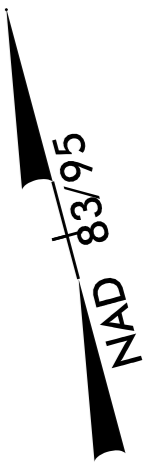
5/6/2015



NOTE:
EXISTING TRANSMISSION LINE ACROSS PROPOSED BRIDGE AREA WILL BE DE-ENERGIZED BUT WILL REMAIN IN PLACE DURING ENTIRE PROJECT DURATION. CONTRACTOR TO AVOID CONFLICT WITH EXISTING LINE.

K:\RAL_Roadway\01036715 U-3315\Roadway\Pro\Utilities By Others\U3315_rdy_U0-7.dgn 5/16/2015

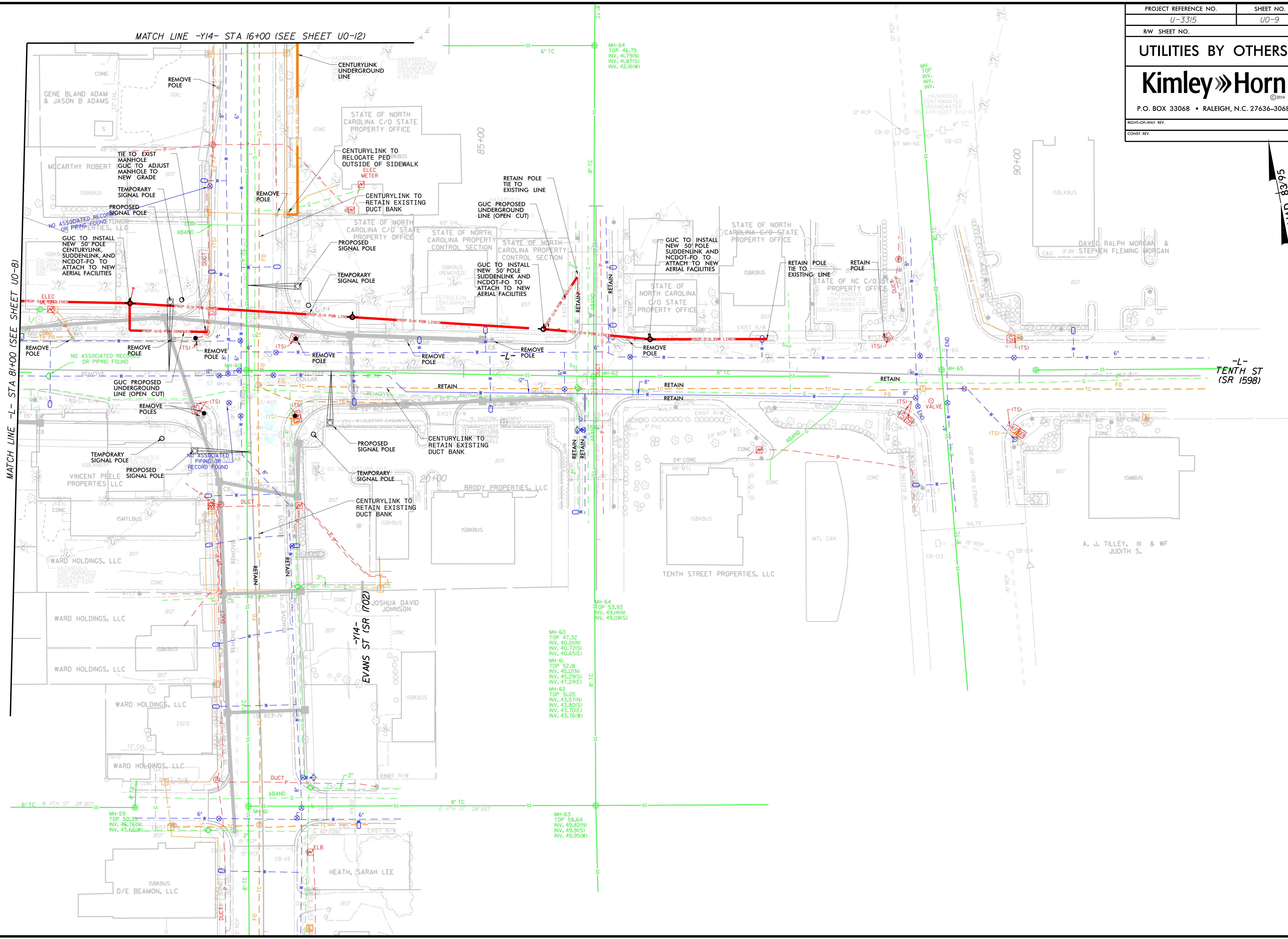
PROJECT REFERENCE NO.	SHEET NO.
U-3315	U0-8
RW SHEET NO.	
UTILITIES BY OTHERS	
Kimley»Horn	
P.O. BOX 33068 • RALEIGH, N.C. 27636-3068	
RIGHT-OF-WAY REV.	
CONST. REV.	



K:\RAL_Roadway\01036175 U-3315\Roadway\Pro_Utilities By Others\U-3315_rdy_U0-8.dgn

5/16/2015

PROJECT REFERENCE NO.	SHEET NO.
U-3315	U0-9
RW SHEET NO.	
UTILITIES BY OTHERS	
Kimley»Horn	
P.O. BOX 33068 • RALEIGH, N.C. 27636-3068	
RIGHT-OF-WAY REV.	
CONST. REV.	



NAD 83/95

MATCH LINE -L- STA 81+00 (SEE SHEET U0-8)

MATCH LINE -Y14- STA 16+00 (SEE SHEET U0-12)

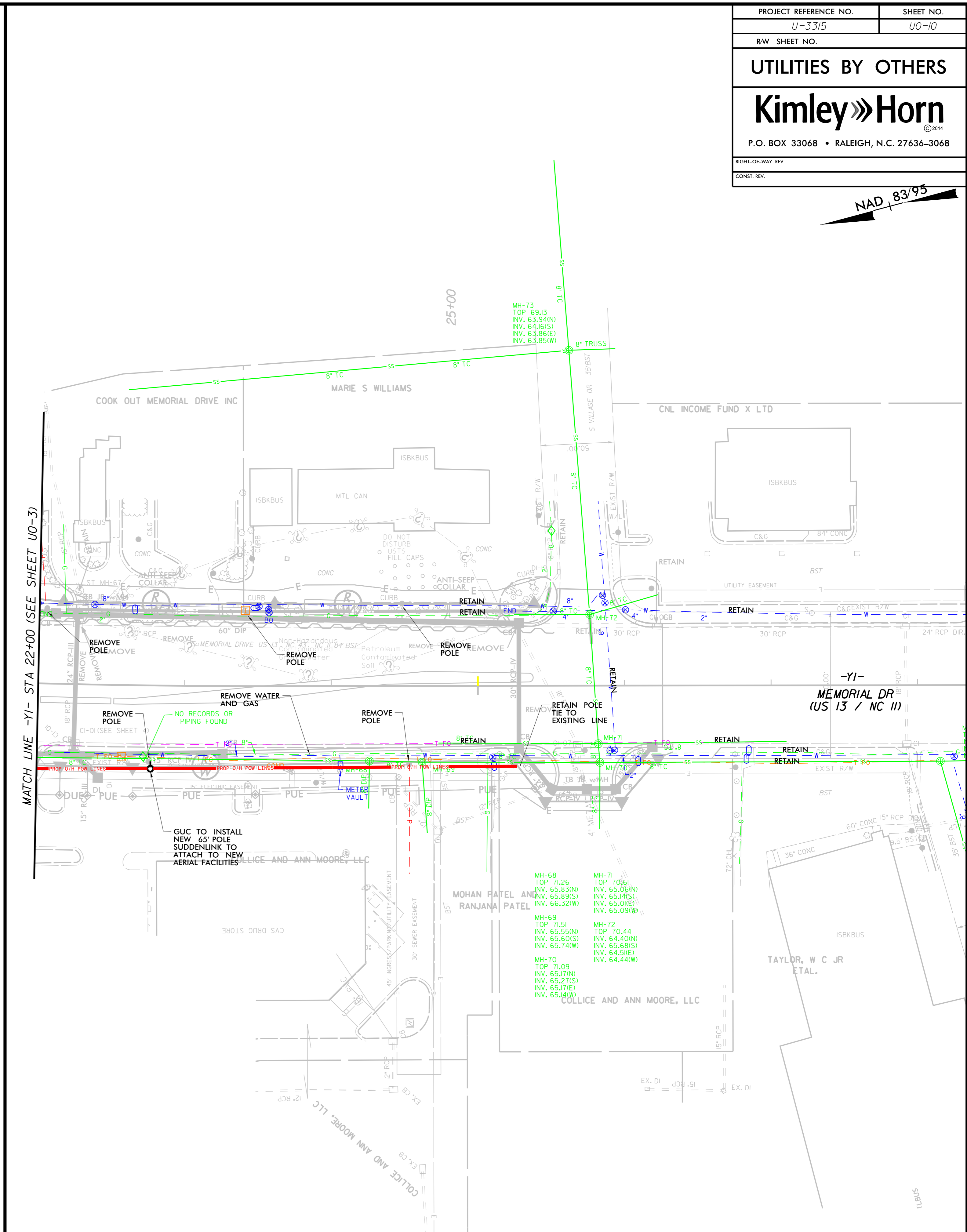
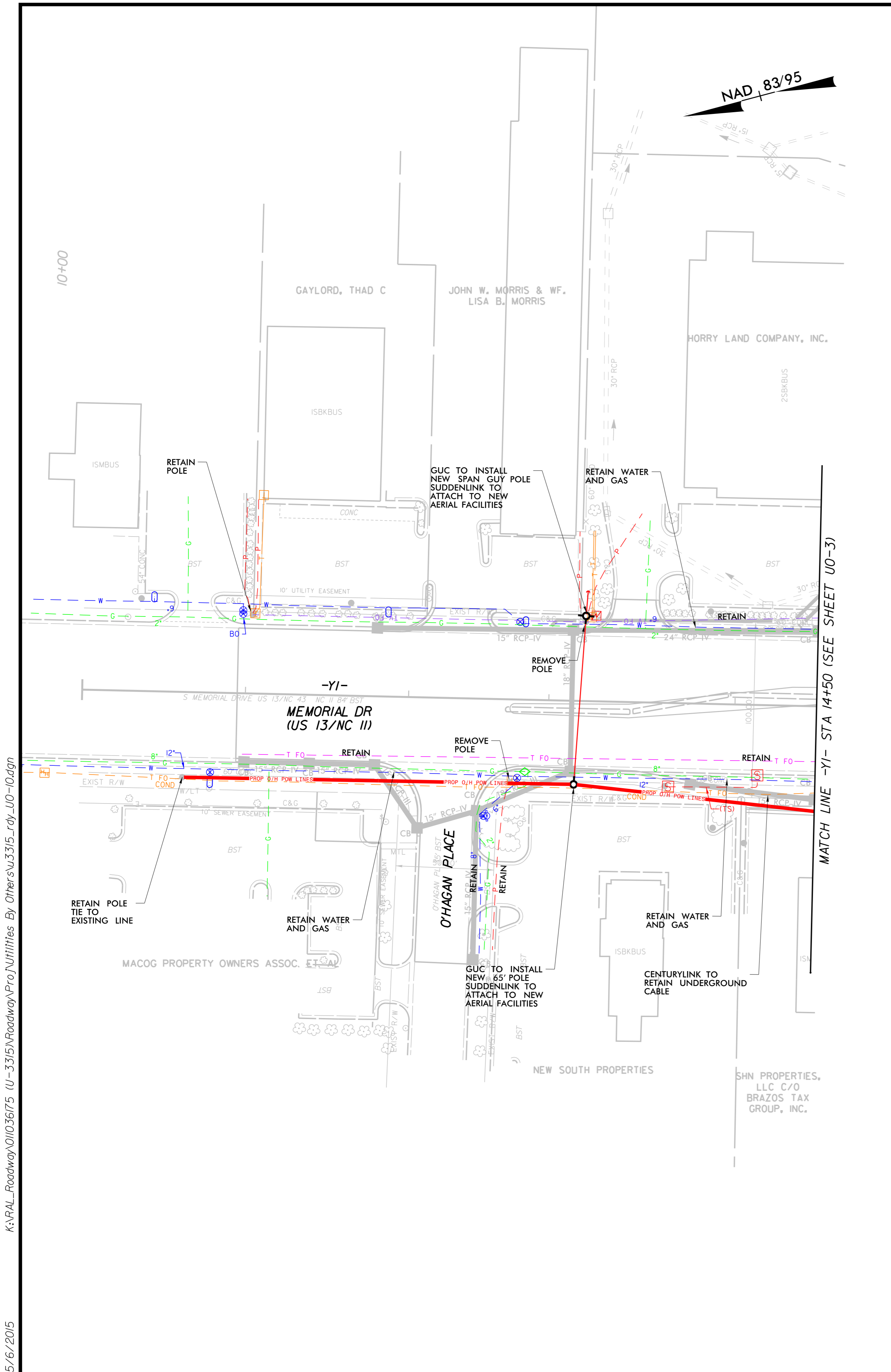
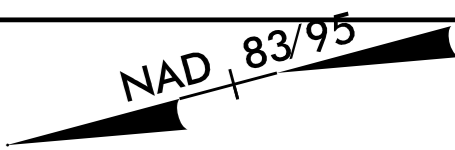
-L- TENTH ST (SR 1598)

-Y14- EVANS ST (SR 1702)

K:\RAL_Roadway\01036175 U-3315\Roadway\Pro\Utilities By Others\U3315_rdy_U0-9.dgn

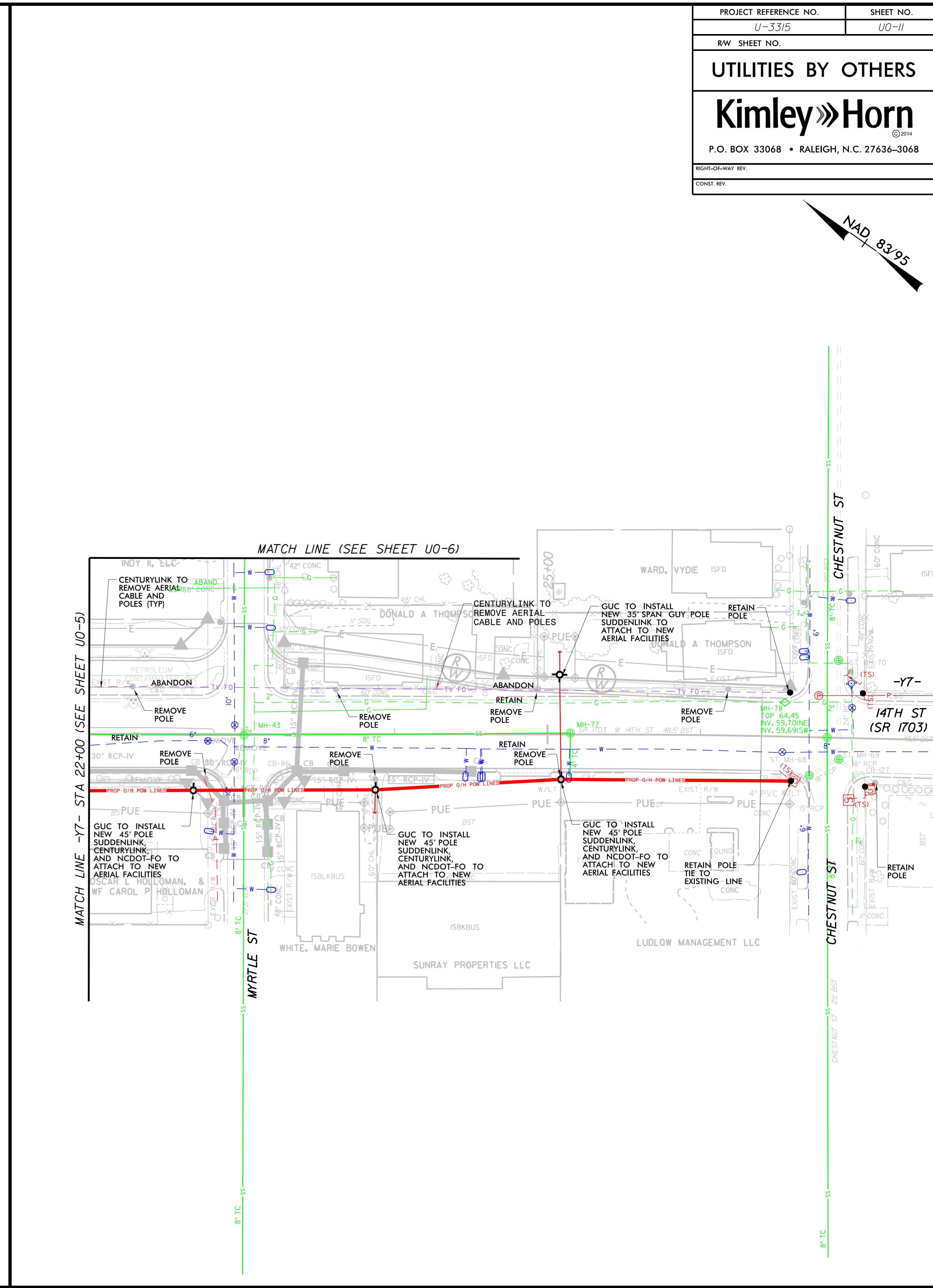
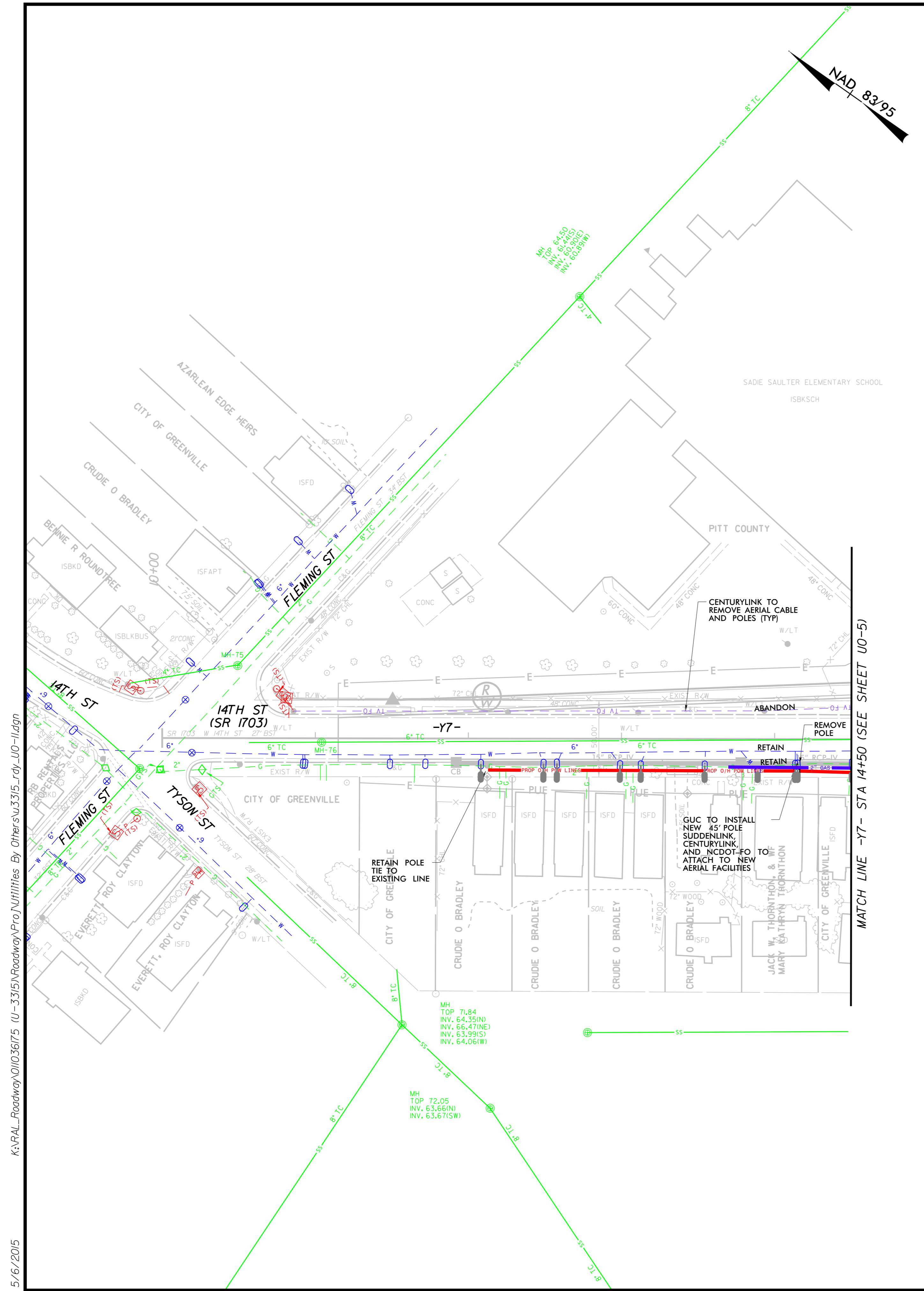
5/16/2015

PROJECT REFERENCE NO.	SHEET NO.
U-3315	U0-10
RW SHEET NO.	
UTILITIES BY OTHERS	
Kimley»Horn	
P.O. BOX 33068 • RALEIGH, N.C. 27636-3068	
RIGHT-OF-WAY REV.	
CONST. REV.	



K:\RAL_Roadway\01036175 U-3315\Roadway\Pro\Utilities By Others\U3315_rdy_U0-10.dgn

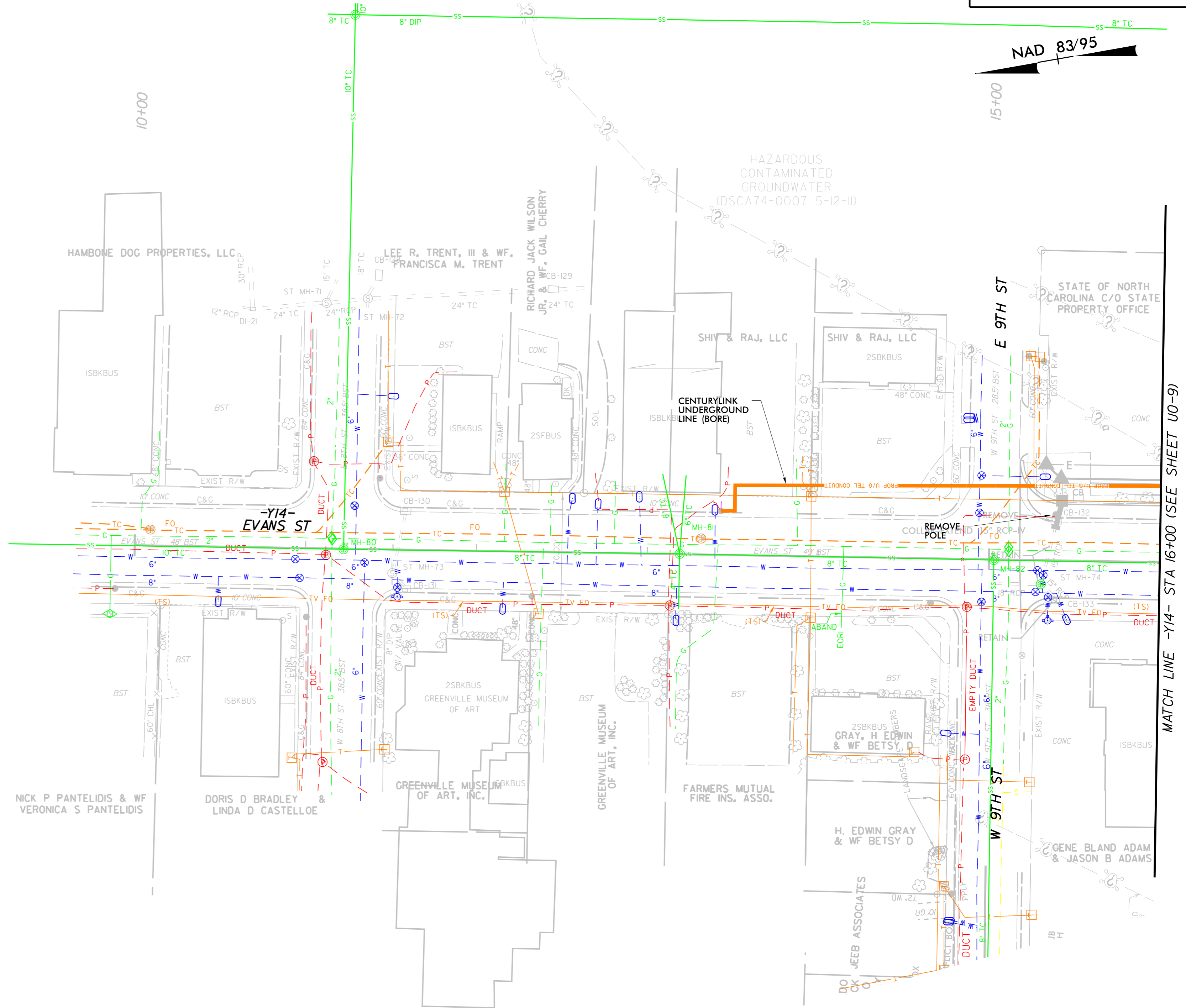
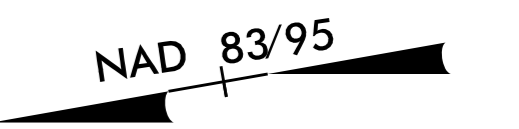
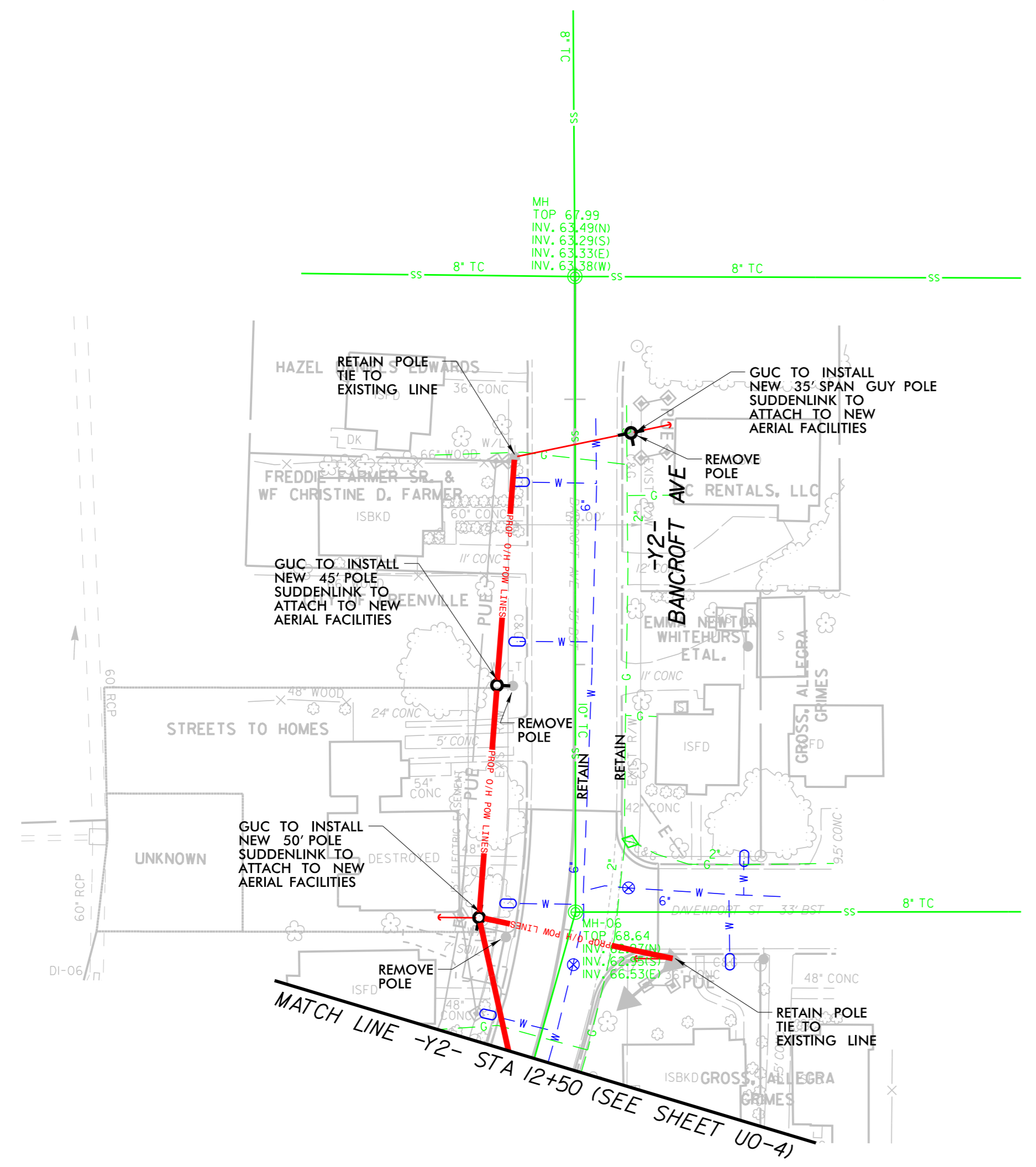
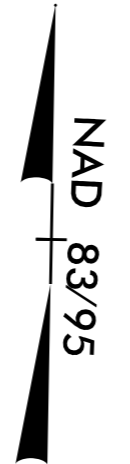
5/6/2015



K:\RAL_Roadway\01036715 U-3315\Roadway\Pro\Utilities By Others\U3315_rdy_U0-11.dgn

5/6/2015

PROJECT REFERENCE NO.	SHEET NO.
U-3315	U0-12
RW SHEET NO.	
UTILITIES BY OTHERS	
Kimley»Horn	
P.O. BOX 33068 • RALEIGH, N.C. 27636-3068	
RIGHT-OF-WAY REV.	
CONST. REV.	



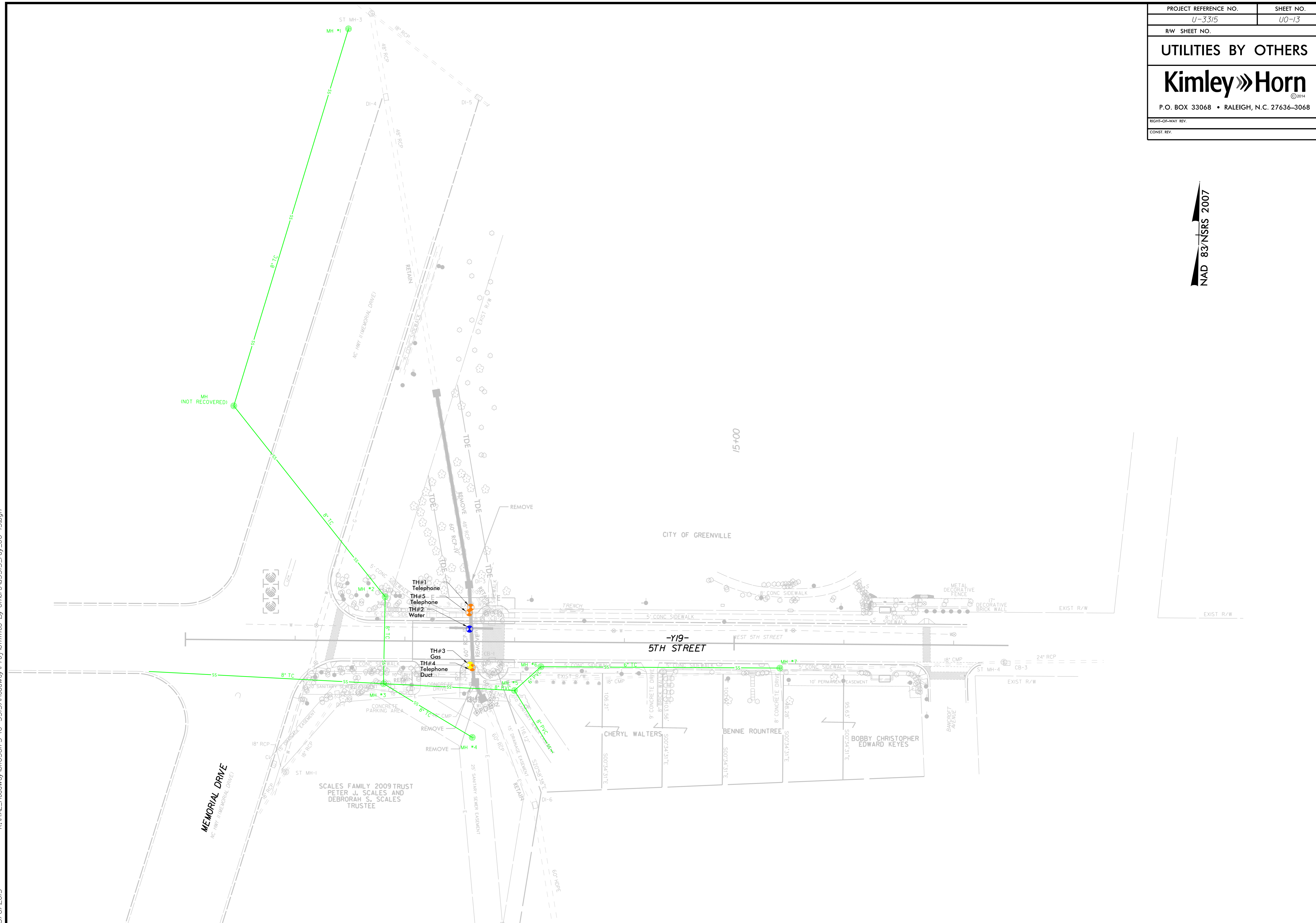
K:\RAL_Roadway\01036175 U-3315\Roadway\Pro\Utilities By Others\U3315_rdy_U0-12.dgn

5/6/2015

PROJECT REFERENCE NO.	SHEET NO.
U-3315	U0-13
RW SHEET NO.	
UTILITIES BY OTHERS	
Kimley»Horn	
P.O. BOX 33068 • RALEIGH, N.C. 27636-3068	
RIGHT-OF-WAY REV.	
CONST. REV.	

NAD 83/NSRS 2007

K:\RAL_Roadway\01036175 U-3315\Roadway\Pro\Utilities By Others.u3315_rdy_U0-13.dgn



5/6/2015