

PLAN @ END BENT 1
(END BENT 2 SIMILAR)

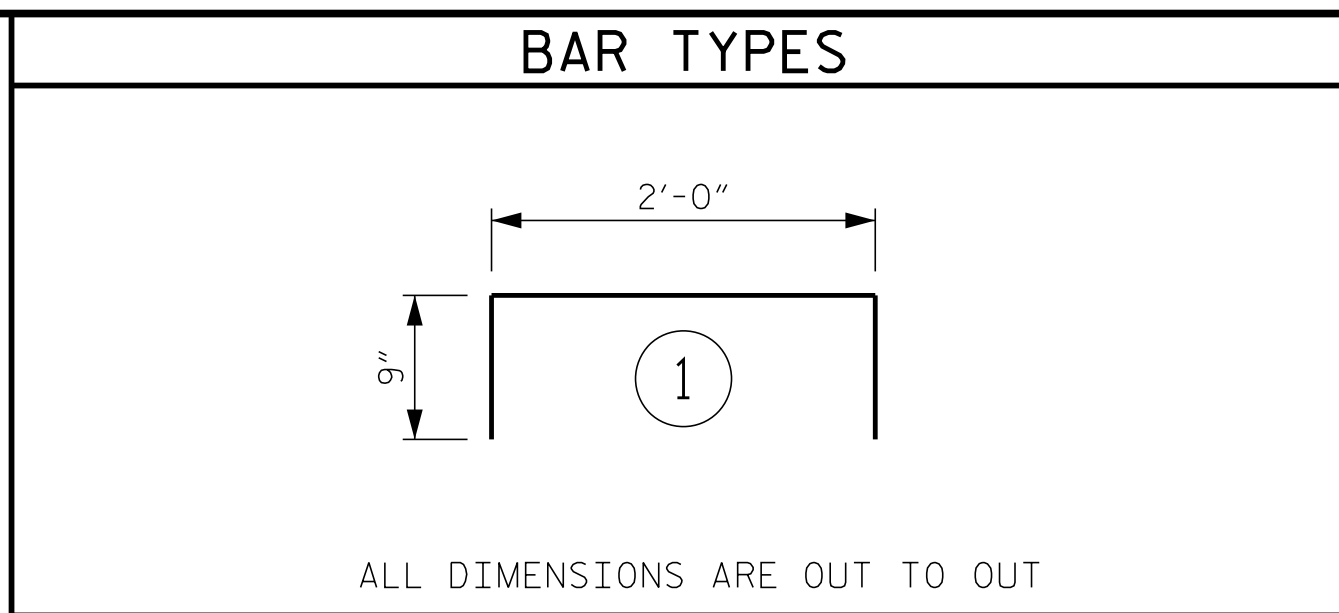
- ① 5-#4B1 @ 1'-2" CTS.
- ② 3-#4B1 @ 1'-2" CTS.

NOTE:
RIGHT SIDEWALK REINFORCING SHOWN.
LEFT SIDEWALK REINFORCING SIMILAR.

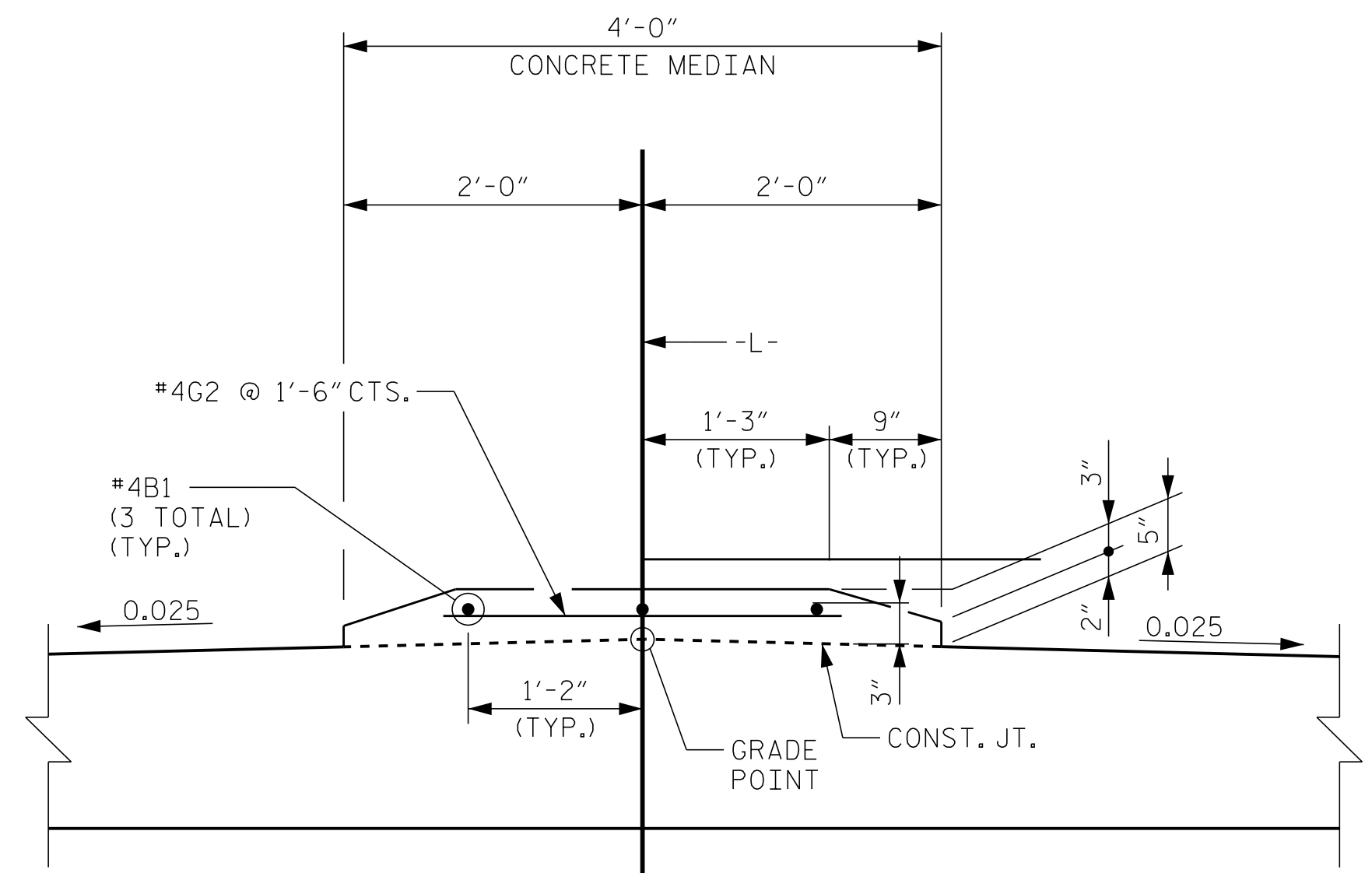
NOTES

SIDEWALK AND MEDIAN ON APPROACH SLAB SHALL BE PAID FOR IN BRIDGE APPROACH SLAB PAY ITEM.

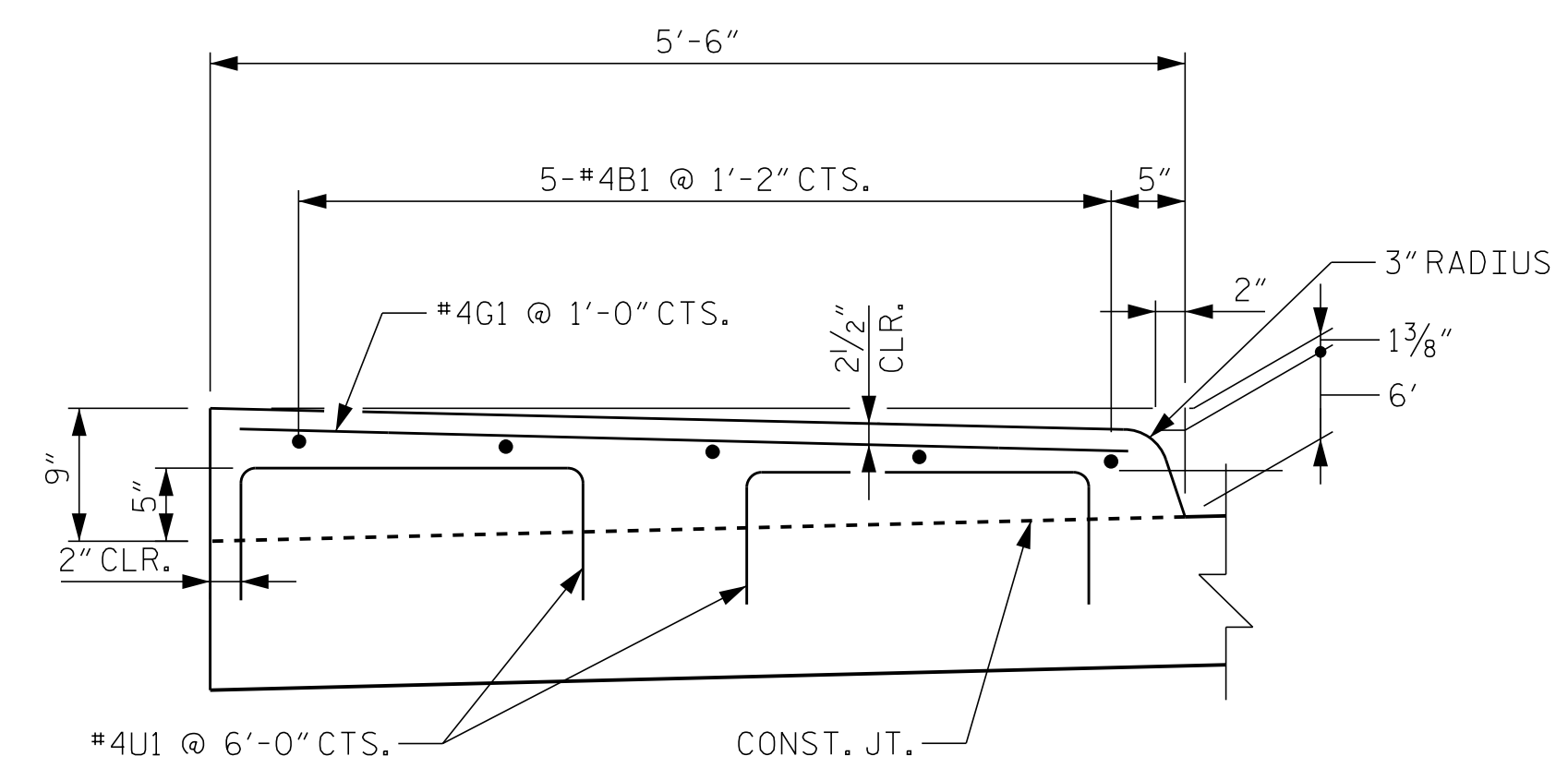
THE #4U1 BARS MAY BE PUSHED INTO GREEN CONCRETE AFTER THE APPROACH SLAB HAS BEEN FINISHED.



BILL OF MATERIAL					
SIDEWALKS & MEDIAN FOR ONE APPROACH SLAB (2 REQ'D)					
BAR	NO.	SIZE	TYPE	LENGTH	WEIGHT
* B1	13	4	STR	24'-8"	214
* G1	52	4	STR	5'-0"	174
* G2	17	4	STR	2'-8"	30
* U1	20	4	1	3'-6"	47
* EPOXY COATED REINFORCING STEEL					465 LBS.
CLASS AA CONCRETE					7.5 C. Y.



SECTION B-B



SECTION A-A

PROJECT NO. U-3315
PITT COUNTY
 STATION: 65+56.61 -L-
16+96.14 -Y10-

SHEET 2 OF 3



Kimley»Horn
 333 Fayetteville Street, Suite 600
 Raleigh, NC 27601-1772
 Phone (919) 835-1494
 NC LICENSE # F-0102

STATE OF NORTH CAROLINA
 DEPARTMENT OF TRANSPORTATION
 RALEIGH
**BRIDGE APPROACH SLAB
 SIDEWALK AND MEDIAN
 DETAILS**

REVISIONS						SHEET NO.
NO.	BY:	DATE:	NO.	BY:	DATE:	S-31
1			3			TOTAL SHEETS
2			4			33

K:\BIDI_Structures\Bridges\NC\01036175_U3315-10th.St_Greenville_Cov\egm\SS1.dgn 9/12/2014

DRAWN BY: <u>J. I. KIMBLE</u>	DATE: <u>9/14</u>
CHECKED BY: <u>J. C. WILSON</u>	DATE: <u>9/14</u>
DESIGN ENGINEER OF RECORD: <u>C.L. NARRON</u>	DATE: <u>9/14</u>