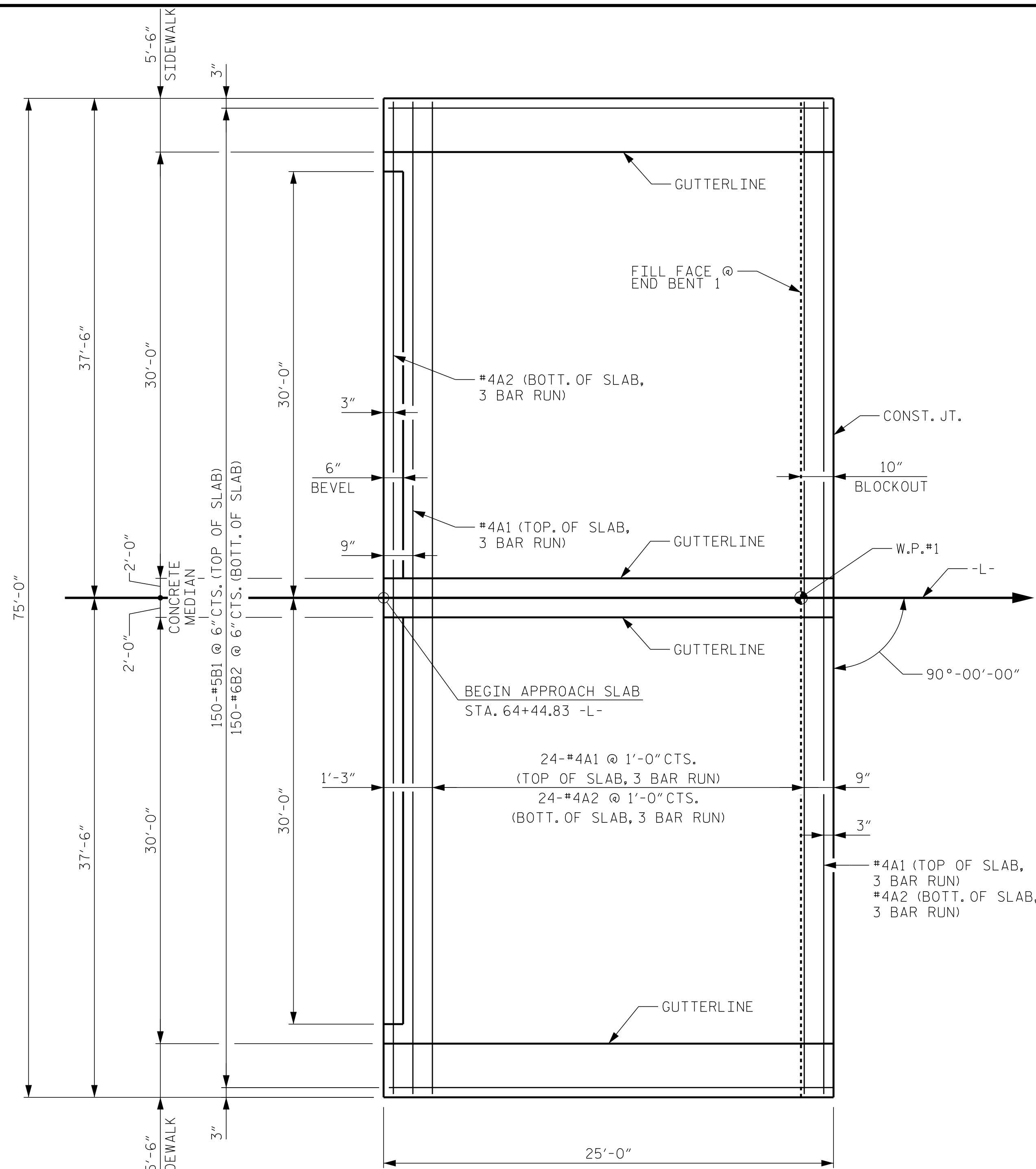


| BILL OF MATERIAL | | | | | |
|------------------------------------|-----|------|------|--------|------------|
| FOR ONE APPROACH SLAB (2 REQ'D) | | | | | |
| BAR | NO. | SIZE | TYPE | LENGTH | WEIGHT |
| * A1 | 78 | 4 | STR | 26'-3" | 1,368 |
| A2 | 78 | 4 | STR | 26'-1" | 1,359 |
| * B1 | 150 | 5 | STR | 24'-2" | 3,781 |
| B2 | 150 | 6 | STR | 24'-8" | 5,557 |
| REINFORCING STEEL | | | | | 6,916 LBS. |
| * EPOXY COATED REINFORCING STEEL | | | | | 5,149 LBS. |
| CLASS AA CONCRETE | | | | | 80.7 C. Y. |

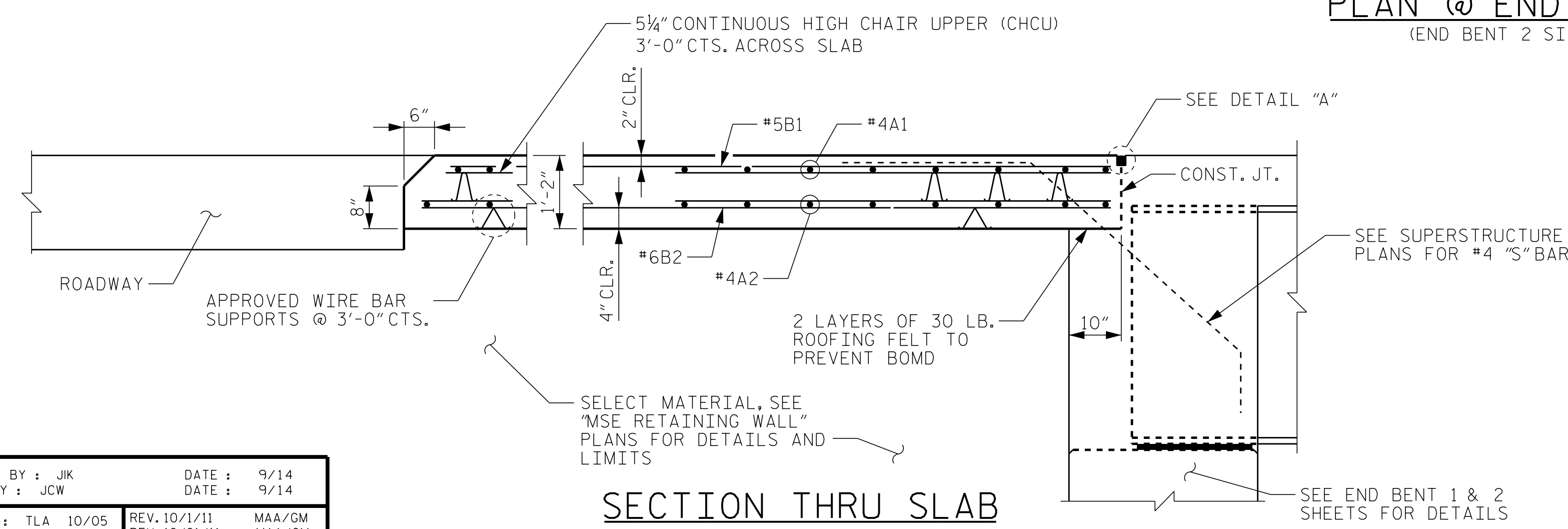
NOTES

APPROACH SLAB SHALL NOT BE CONSTRUCTED PRIOR TO COMPLETION OF THE BRIDGE DECK.

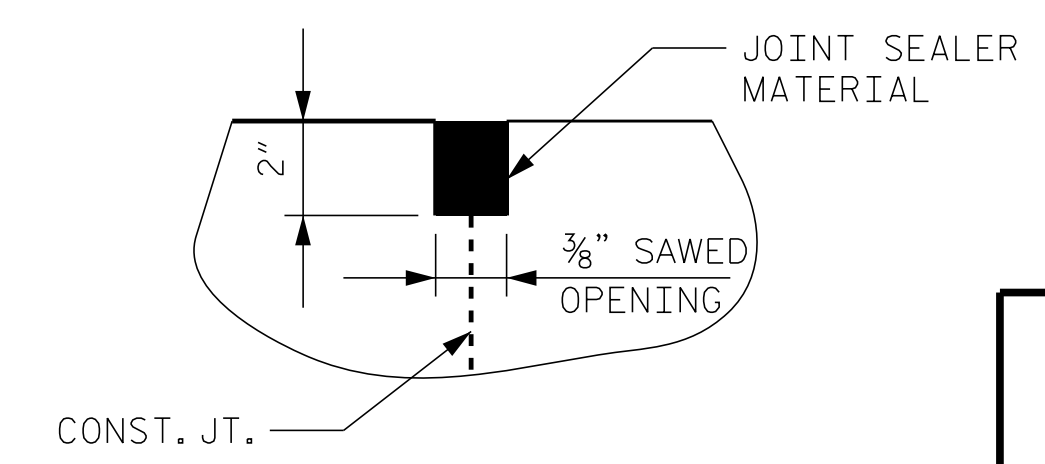
THE JOINT OPENING AT THE APPROACH SLAB/DECK INTERFACE SHALL BE SAWED NO MORE THAN 12 HOURS AFTER THE APPROACH SLAB IS CAST. THE JOINT SHALL BE CLEANED OF ALL DEBRIS BEFORE THE SEALANT IS APPLIED. THE JOINT SEALER MATERIAL SHALL CONFORM TO THE REQUIREMENTS OF SECTION 1028-3 OF THE STANDARD SPECIFICATIONS.



PLAN @ END BENT 1
(END BENT 2 SIMILAR)

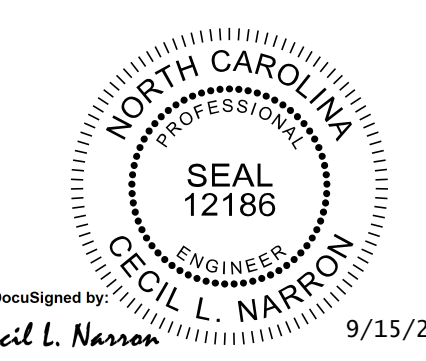


SECTION THRU SLAB



DETAIL "A"

PROJECT NO. U-3315
PITT COUNTY
 STATION: 65+56.61 -L-
16+96.14 -Y10-
 SHEET 1 OF 3



Kimley»Horn
 333 Fayetteville Street, Suite 600
 Raleigh, NC 27601-1772
 Phone (919) 835-1494
 NC LICENSE # F-0102

STATE OF NORTH CAROLINA
 DEPARTMENT OF TRANSPORTATION
 RALEIGH
 STANDARD
**BRIDGE APPROACH SLAB
 FOR INTEGRAL
 ABUTEMENT**

| REVISIONS | | | | SHEET NO. | | |
|-----------|-----|-------|-----|-----------|-------|--------------|
| NO. | BY: | DATE: | NO. | BY: | DATE: | TOTAL SHEETS |
| 1 | | | 3 | | | 33 |
| 2 | | | 4 | | | |

K:\BIDI_Structures\Bridges\N.C. 10136175-U3315-10th.St.-Greenville.Cad\egm.VS30.dgn 9/12/2014

| | |
|----------------------|----------------------|
| ASSEMBLED BY : JIK | DATE : 9/14 |
| CHECKED BY : JCW | DATE : 9/14 |
| DRAWN BY : TLA 10/05 | REV. 10/1/11 MAA/GM |
| CHECKED BY : GM 5/06 | REV. 12/21/11 MAA/GM |
| | REV. 6/13 MAA/GM |