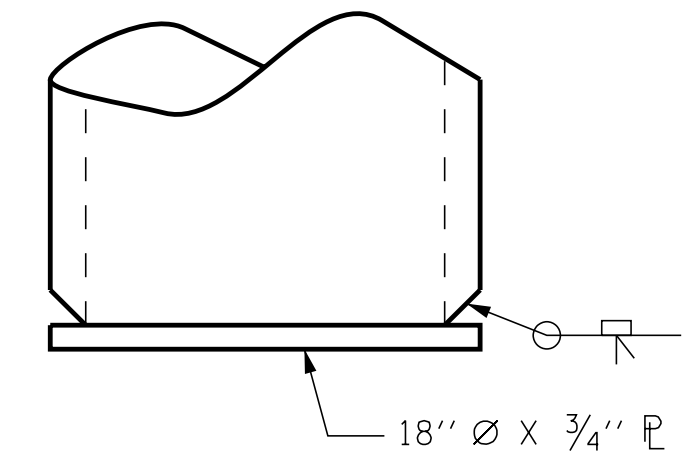
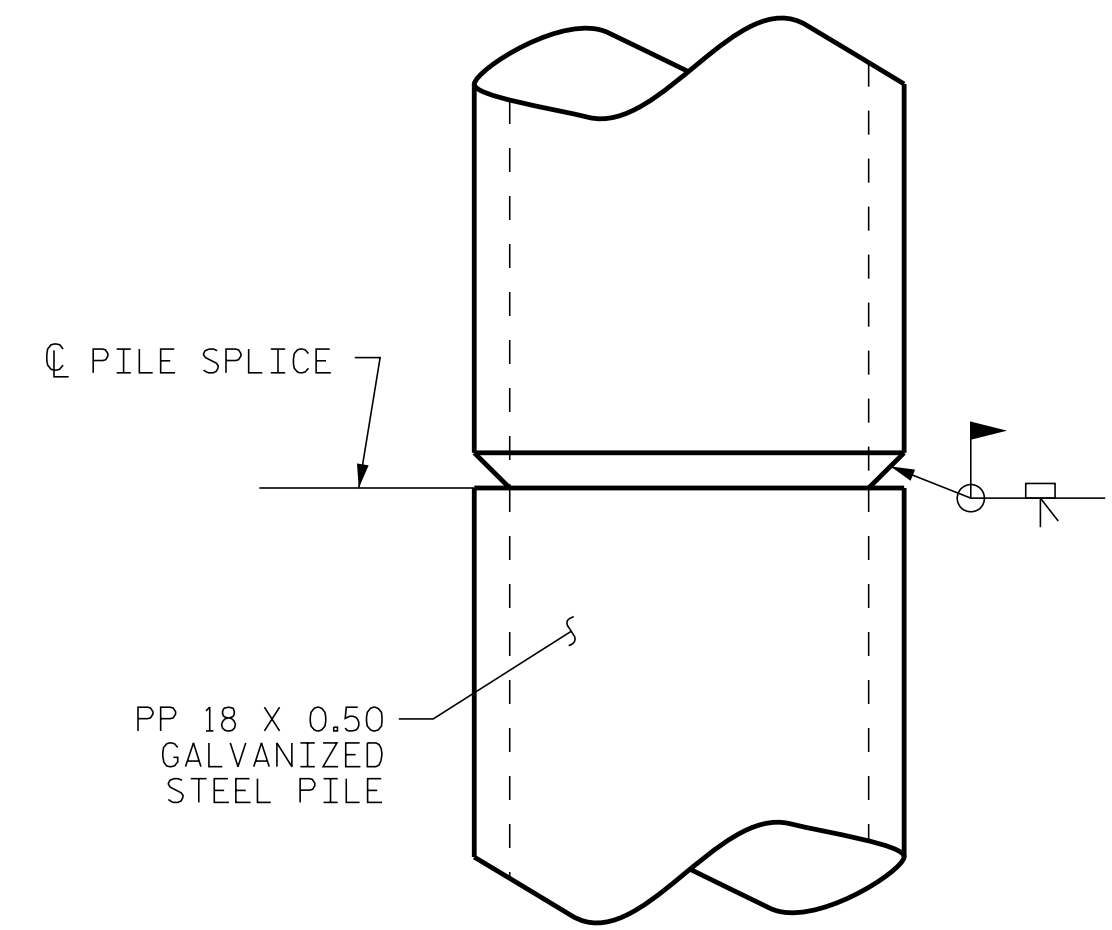


**PP 18 X 0.50 GALVANIZED STEEL PILE**



PIPE PILE PLATE DETAIL



PIPE PILE SPLICE DETAIL

**NOTES**

PIPE PILES SHALL BE IN ACCORDANCE WITH SECTION 1084 OF THE STANDARD SPECIFICATIONS.

GALVANIZE STEEL PIPE PILES IN ACCORDANCE WITH SECTION 1076 OF THE STANDARD SPECIFICATIONS UNLESS METALLIZING IS REQUIRED. GALVANIZING OR METALLIZING PIPE PILE PLATES IS NOT REQUIRED.

PIPE PILE PLATES, IF REQUIRED, SHALL BE IN ACCORDANCE WITH SECTION 450 OF THE STANDARD SPECIFICATIONS.

REMOVE AND REPLACE OR REPAIR TO THE SATISFACTION OF THE ENGINEER PILES THAT ARE DAMAGED, DEFORMED OR COLLAPSED DURING INSTALLATION OR DRIVING.

PILE SPLICES SHALL BE IN ACCORDANCE WITH THE STANDARD SPECIFICATIONS AND AWS D1.1.

FOR CLOSED END PIPE PILES, REMOVE ALL SOIL AND WATER FROM INSIDE THE PILES JUST PRIOR TO PLACING REINFORCING STEEL AND CONCRETE FOR THE CONCRETE PLUG.

FORM THE CONCRETE PLUG SUCH THAT THE REINFORCING STEEL OR CONCRETE DOES NOT MOVE AND THE CLEARANCE FROM THE REINFORCING STEEL TO THE INSIDE OF THE PILE IS MAINTAINED AFTER CONCRETE PLACEMENT. DO NOT PLACE CONCRETE IN THE BENT CAP UNTIL THE CONCRETE PLUG HAS ATTAINED A MINIMUM COMPRESSIVE STRENGTH OF 1500 PSI.

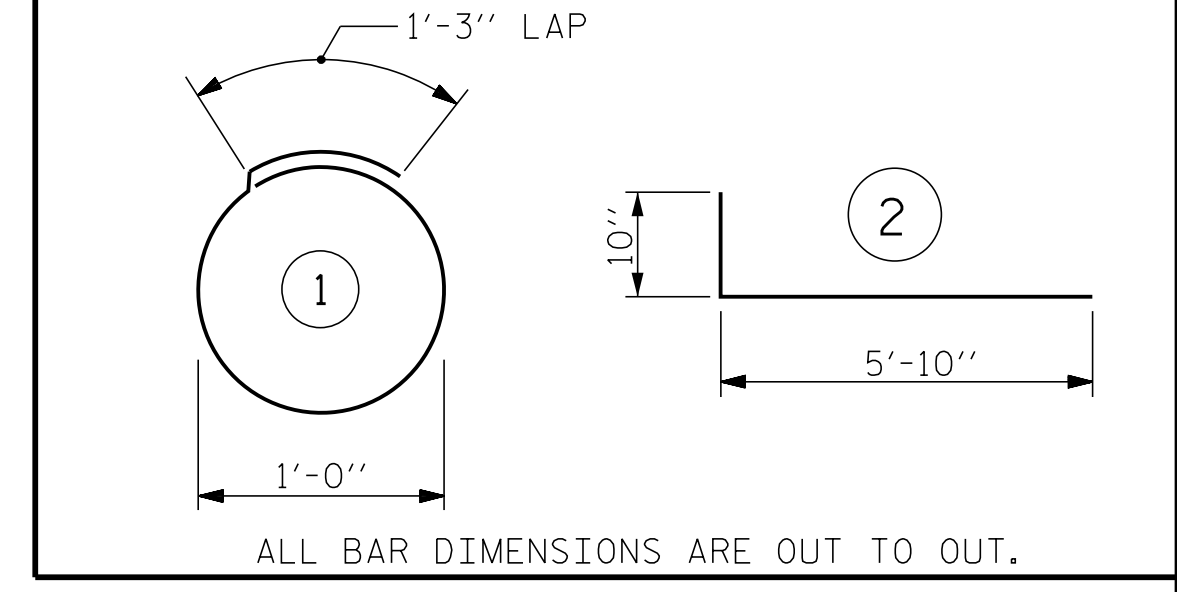
THE REINFORCING STEEL, CLASS A CONCRETE, AND GALVANIZING ARE CONSIDERED INCIDENTAL TO THE CONTRACT UNIT PRICE BID PER LINEAR FOOT FOR PP 18 X 0.50 GALVANIZED STEEL PILES.

**BILL OF MATERIAL FOR ONE PP 18 X 0.50 GALVANIZED STEEL PILE**

BAR	NO.	SIZE	TYPE	LENGTH	WEIGHT
S1	6	#4	1	4'-5"	18
V1	8	#5	2	6'-8"	56
REINFORCING STEEL =				74	LBS

CLASS A CONCRETE  
5'-0" MINIMUM PLUG 0.3 CY

**BAR TYPES**



9/12/2014 K:\BID1-Structures\Bridges\NA\01036175-U3315-10th.St-Greenville\ConVgn\SS26.dgn

ASSEMBLED BY : JIK	DATE : 9/14
CHECKED BY : JCW	DATE : 9/14
DRAWN BY : RWW 1/01	REV. 10/1/05 LBG/TLA
CHECKED BY : LES 1/01	REV. 5/1/06R MAA/KMM
	REV. 10/1/11 MAA/GM

**Kimley»Horn**  
 333 Fayetteville Street, Suite 600  
 Raleigh, NC 27601-1772  
 Phone (919) 835-1494  
 N.C. LICENSE # F-0102

PROJECT NO. U-3315  
PITT COUNTY  
 STATION: 65+56.61 -L-  
16+96.14 -Y10-  
 SHEET 3 OF 3

STATE OF NORTH CAROLINA  
 DEPARTMENT OF TRANSPORTATION  
 RALEIGH  
 SUBSTRUCTURE  
 END BENT 1  
 (INTEGRAL)  
 18" STEEL PIPE PILE

REVISIONS						SHEET NO.
NO.	BY:	DATE:	NO.	BY:	DATE:	S-26
1			3			TOTAL SHEETS
2			4			33