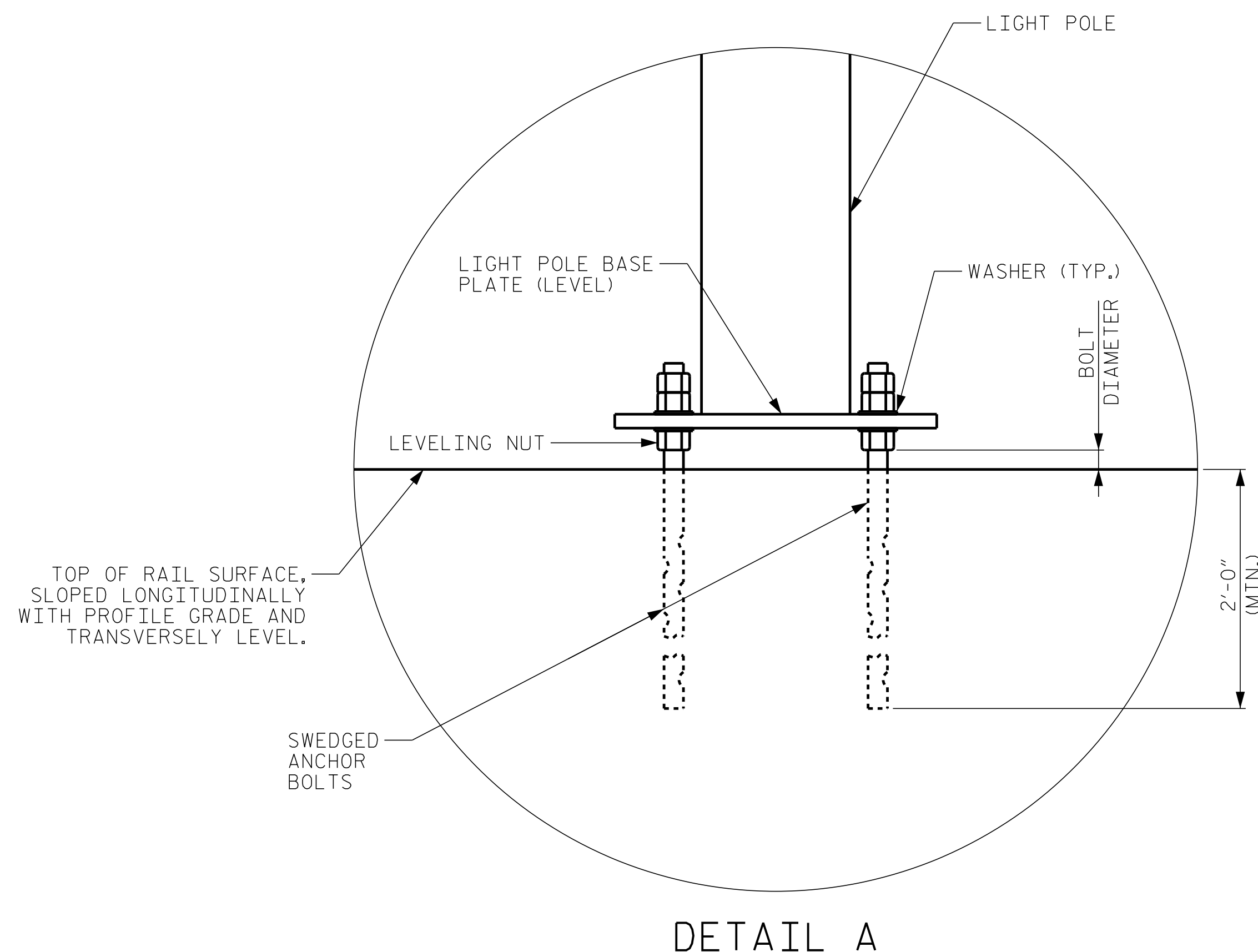


### NOTES

- ANCHOR BOLT DIAMETER: PER LIGHT POLE MANUFACTURER
- ANCHOR BOLTS: ASTM F1554 GRADE 55.
- NUTS: ASTM A563 GRADE A, HEAVY-HEX.
- WASHERS: ASTM F436 TYPE 1.
- ALL NUTS, BOLTS, AND WASHERS SHALL BE GALVANIZED BY ASTM F2329.
- CONTRACTOR SHALL COORDINATE WITH THE CITY TO DETERMINE LIGHT POLE ANCHOR BOLT CONFIGURATION REQUIRED. SUBMIT LIGHT POLE SHOP DRAWINGS SHOWING ANCHOR BOLT CONFIGURATION AND LIGHT POLE DETAILS TO ENGINEER FOR APPROVAL.
- ANCHOR BOLTS MUST BE INSTALLED PLUMB.
- FOR CONDUIT, PULL BOX, AND EXPANSION/DEFLECTION FITTING DETAILS, SEE "ELECTRICAL CONDUIT SYSTEM DETAIL" SHEETS.
- THE COST OF ANCHOR BOLTS, NUTS, AND WASHERS SHALL BE INCIDENTAL TO THE PAY ITEM FOR VERTICAL CONCRETE BARRIER RAIL.



PROJECT NO. U-3315  
PITT COUNTY  
 STATION: 65+56.61 -L-  
16+96.14 -Y10-

SHEET 2 OF 2



DocuSigned by:  
*Cecil L. Narron* 9/15/2014

**Kimley»Horn**

333 Fayetteville Street, Suite 600  
 Raleigh, NC 27601-1772  
 Phone (919) 835-1494

NC LICENSE #  
 F-0102

STATE OF NORTH CAROLINA  
 DEPARTMENT OF TRANSPORTATION  
 RALEIGH

SUPERSTRUCTURE  
 LIGHT POLE  
 DETAILS

REVISIONS

NO.	BY:	DATE:	NO.	BY:	DATE:
1			3		
2			4		

SHEET NO.
S-22
TOTAL SHEETS
33

K:\RDI\_Structures\Bridges\NA\011036175\03315-10th.St.-Greenville.Cad\egm\S22.dgn 9/12/2014

DRAWN BY: J. I. KIMBLE DATE: 9/14  
 CHECKED BY: J. C. WILSON DATE: 9/14  
 DESIGN ENGINEER OF RECORD: C.L. NARRON DATE: 9/14

This document, together with the concepts and designs presented herein, is an integral part of a contract. It is intended only for the specific project and site shown, and is not to be used for any other project or site without the written authorization and approval of Kimley-Horn and Associates, Inc. No part of this document shall be reproduced or transmitted in any form or by any means, electronic or mechanical, including photocopying, recording, or by any information storage and retrieval system, without the prior written permission of Kimley-Horn and Associates, Inc.