

STRUCTURAL STEEL NOTES

ALL STRUCTURAL STEEL SHALL BE AASHTO M270 GRADE 50 AND PAINTED IN ACCORDANCE WITH SYSTEM 1 OF ARTICLE 442-8 OF THE STANDARD SPECIFICATIONS, EXCEPT THE TOPCOAT SHALL BE BLACK, FEDERAL # FS17038.

ALL DIMENSIONS SHOWN ARE HORIZONTAL OR VERTICAL, UNLESS OTHERWISE NOTED.

ALL FIELD CONNECTIONS TO BE 7/8" DIA. HIGH STRENGTH BOLTS UNLESS OTHERWISE NOTED.

BEARING STIFFENERS ARE TO BE PLACED NORMAL TO THE WEB OF THE GIRDERS AND SHALL BE PLUMB.

A CHARPY V-NOTCH TEST IS REQUIRED FOR WEB PLATES, WEB SPLICE PLATES, BOTTOM FLANGE PLATES, BOTTOM FLANGE SPLICE PLATES. A CHARPY V-NOTCH TEST IS REQUIRED FOR TOP FLANGE PLATES WITHIN 36 FEET OF THE ENDS OF GIRDERS. CHARPY V-NOTCH TESTS SHALL BE IN ACCORDANCE WITH ARTICLE 1072-7 OF THE STANDARD SPECIFICATIONS.

NO WELDING OF FORMS OR FALSEWORK TO THE TOP FLANGE WILL BE PERMITTED WITHIN 36 FEET OF THE ENDS OF GIRDER.

PERMITTED FLANGE AND WEB SHOP SPLICES SHALL NOT BE LOCATED WITHIN 15 FEET OF MAXIMUM DEAD LOAD DEFLECTION. KEEP 2 FEET MINIMUM BETWEEN WEB AND FLANGE SHOP SPLICES. KEEP 6" MINIMUM BETWEEN CONNECTOR PLATE OR TRANSVERSE STIFFENER WELDS AND WEB OR FLANGE SHOP SPLICES.

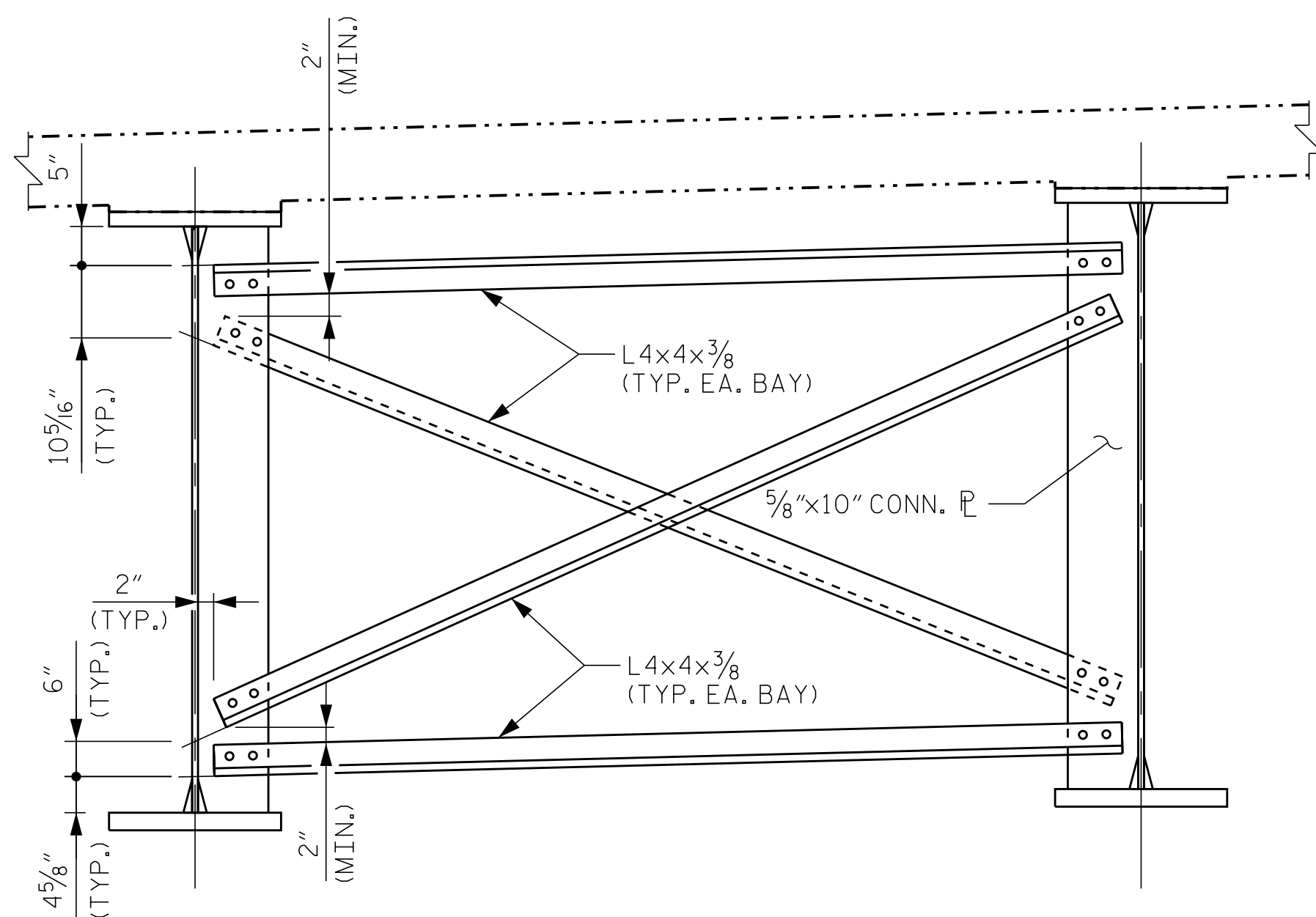
STUDS ON GIRDERS MAY BE SHIFTED UP TO 1" IF NECESSARY TO CLEAR FLANGE SPLICE WELD.

TENSION ON THE AASHTO M164 BOLTS SHALL BE CALIBRATED USING DIRECT TENSION INDICATOR WASHERS IN ACCORDANCE WITH ARTICLE 440-8 OF THE STANDARD SPECIFICATIONS.

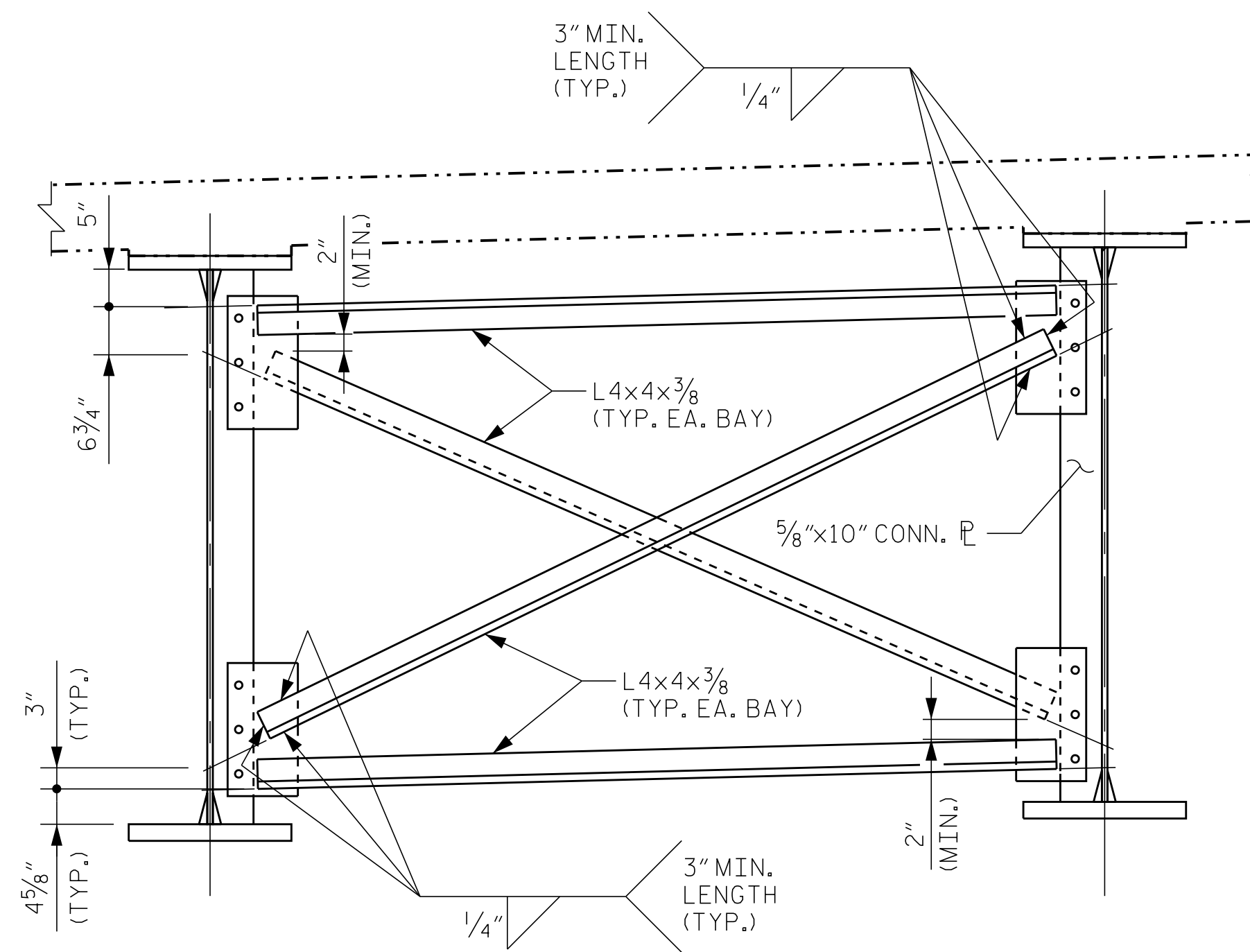
END OF GIRDERS SHALL BE PLUMB.

AT THE CONTRACTOR'S OPTION, THE DIAPHRAGM WITH THE WELDED GUSSET PLATES MAY BE USED IN LIEU OF THE DIAPHRAGM WITH BOLTED ANGLES AT NO ADDITIONAL COST TO THE DEPARTMENT.

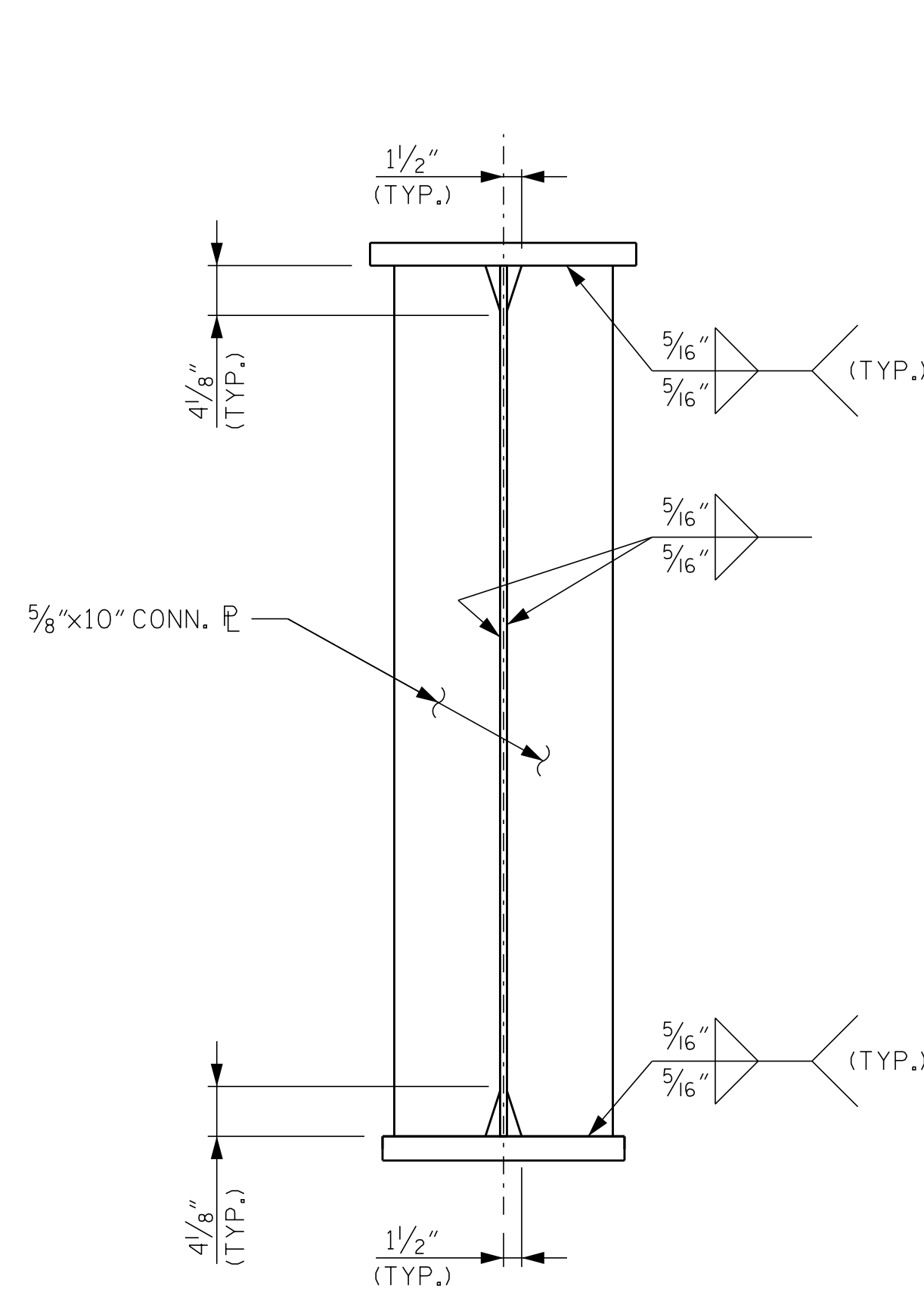
FABRICATORS SHALL DETAIL DIAPHRAGM MEMBERS AND CONNECTIONS FOR STEEL DEAD LOAD FIT UP.



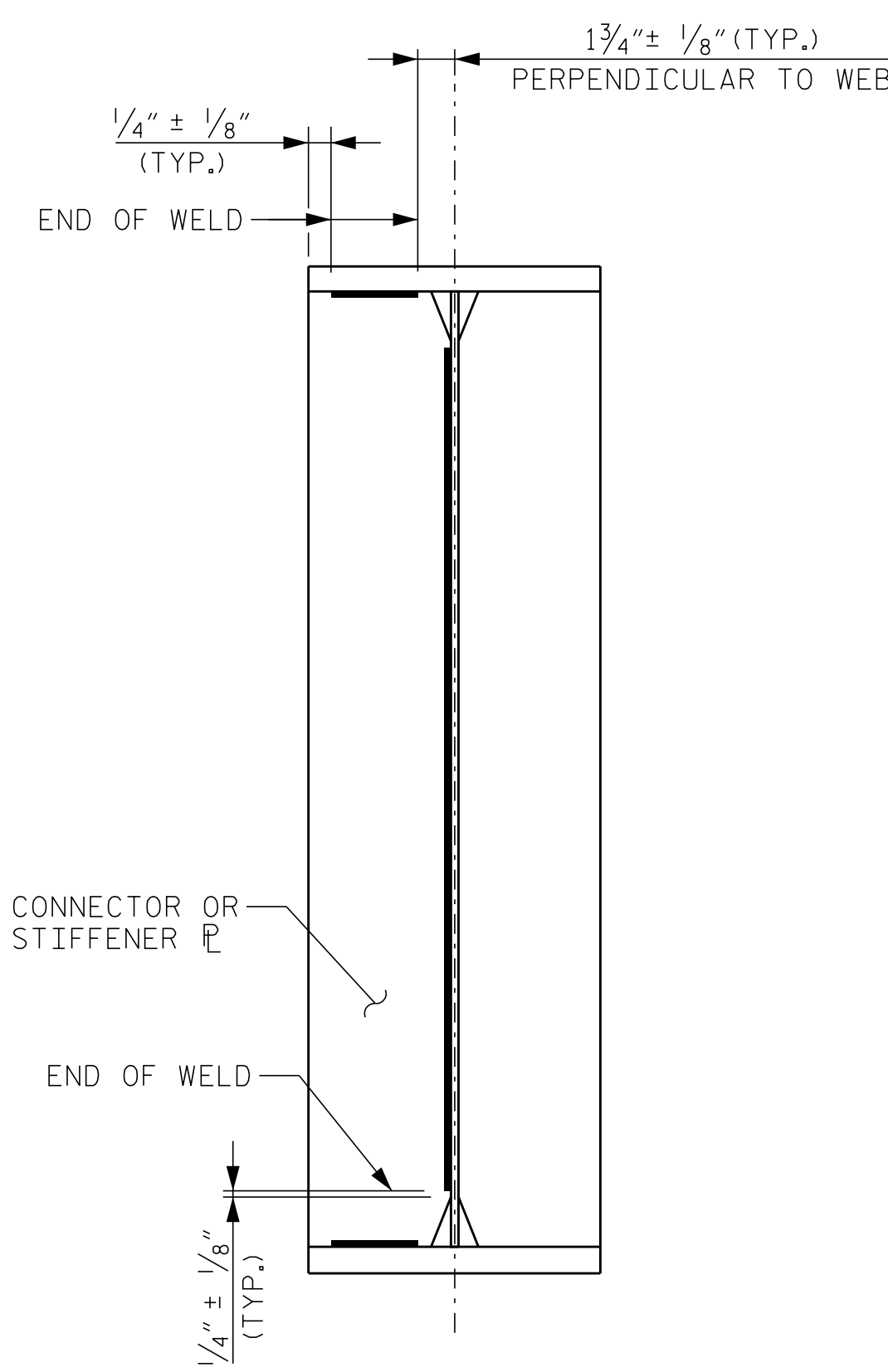
INTERMEDIATE DIAPHRAGM



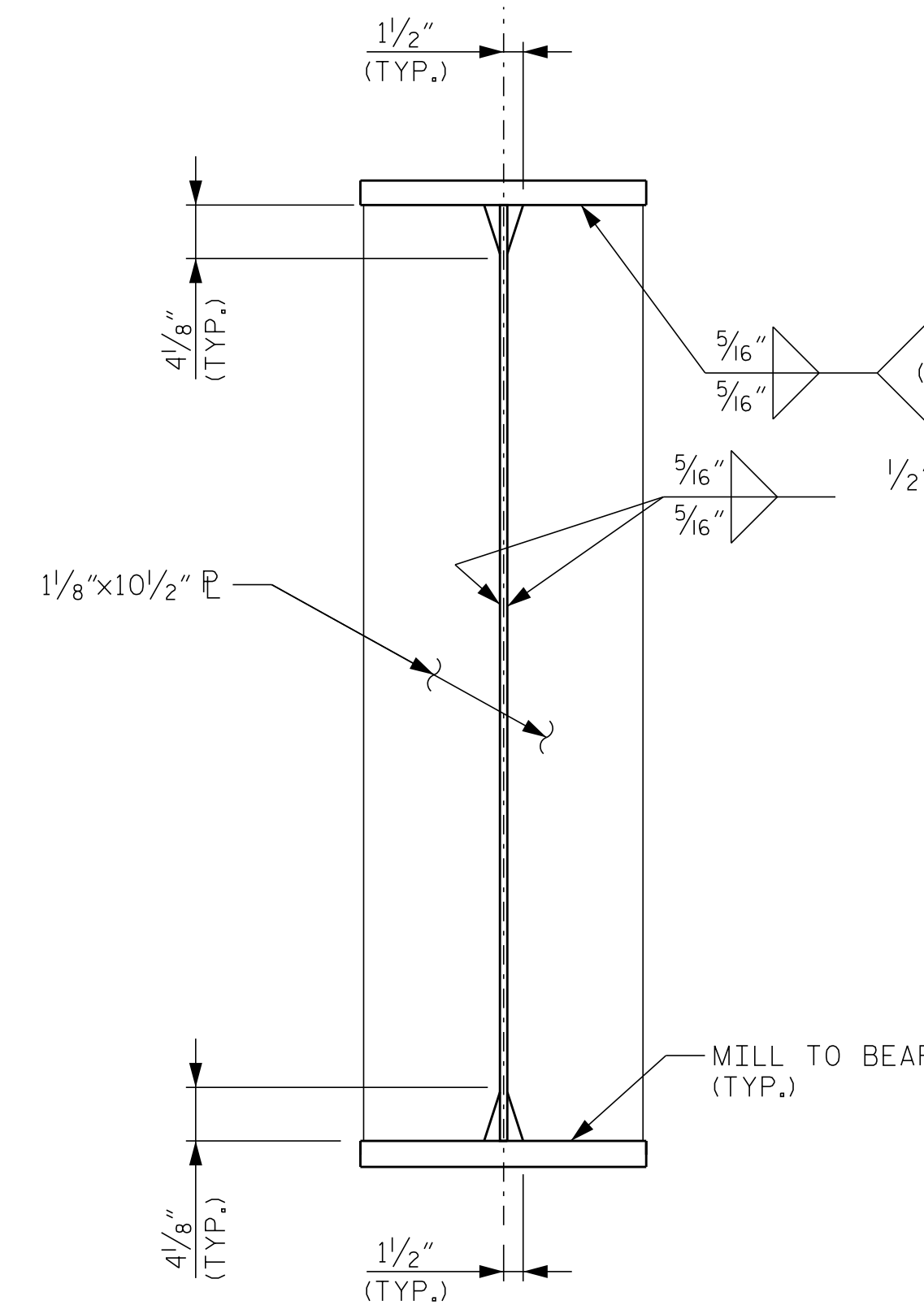
OPTIONAL INTERMEDIATE DIAPHRAGM



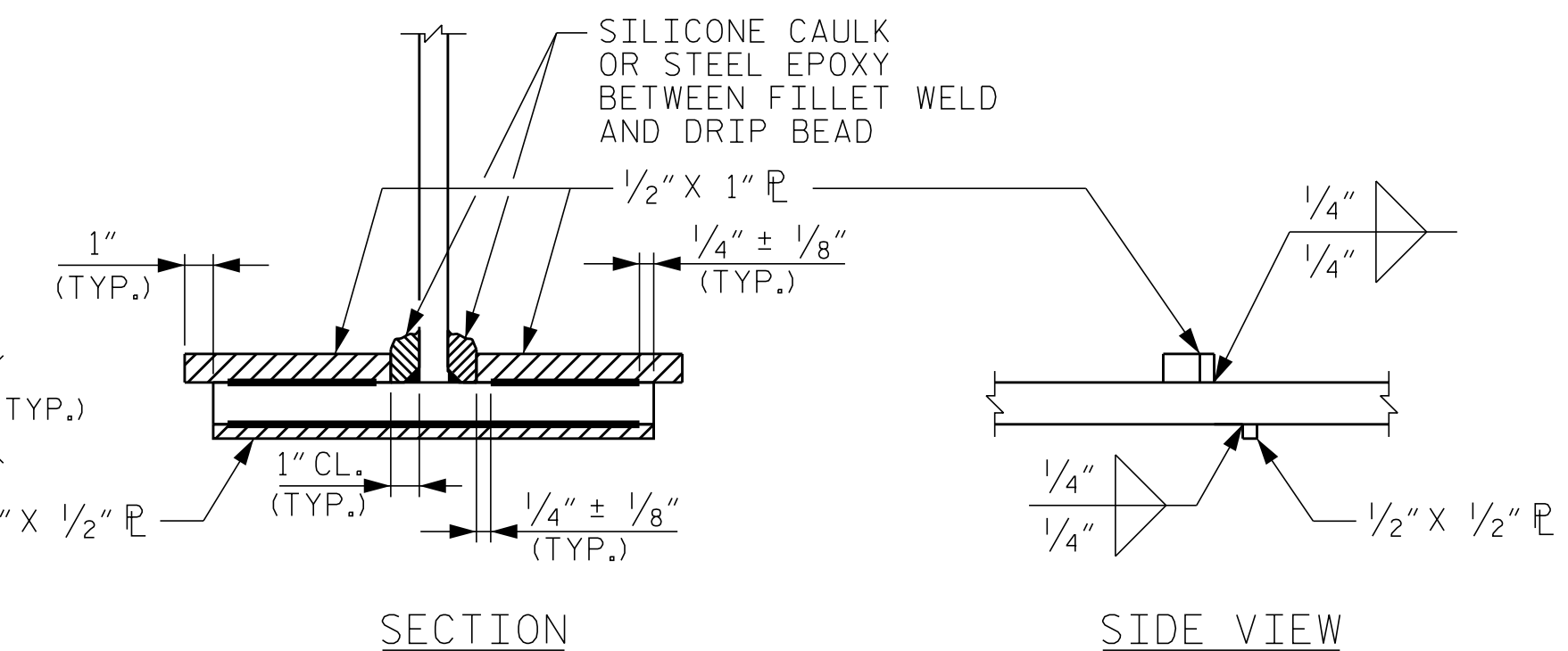
CONNECTOR PLATE DETAIL



WELD TERMINATION DETAIL



BEARING STIFFENER DETAIL



DRIP BEAD DETAILS

PROJECT NO. U-3315
PITT COUNTY
 STATION: 65+56.61 -L-
16+96.14 -Y10-
 SHEET 2 OF 3



DocuSigned by:
Cecil Narron
 C169A3D649240D... 5/12/2015

Kimley»Horn

333 Fayetteville Street, Suite 600
 Raleigh, NC 27601-1772
 Phone (919) 835-1494

NC LICENSE #
 F-0102

STATE OF NORTH CAROLINA
 DEPARTMENT OF TRANSPORTATION
 RALEIGH
 SUPERSTRUCTURE
 STRUCTURAL STEEL
 DETAILS

REVISIONS

| NO. | BY: | DATE: | NO. | BY: | DATE: |
|-----|-----|-------|-----|-----|-------|
| 1 | | | 3 | | |
| 2 | | | 4 | | |

| SHEET NO. | |
|--------------|--|
| S-12 | |
| TOTAL SHEETS | |
| 33 | |

DRAWN BY: J. I. KIMBLE DATE: 5/15
 CHECKED BY: J. C. WILSON DATE: 5/15
 DESIGN ENGINEER OF RECORD: C.L. NARRON DATE: 5/15