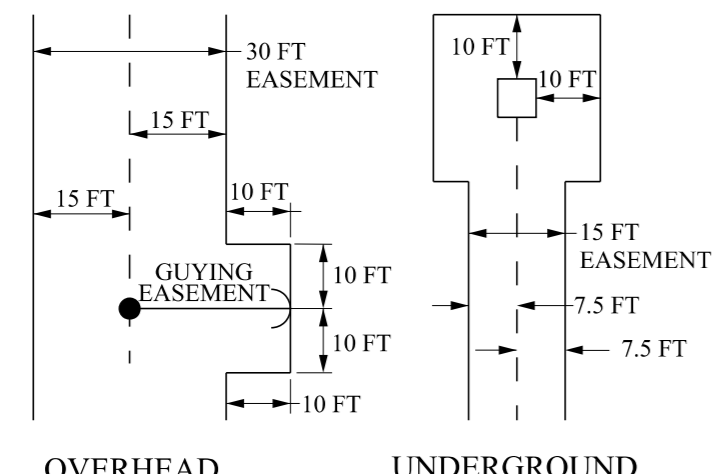


NOTES:

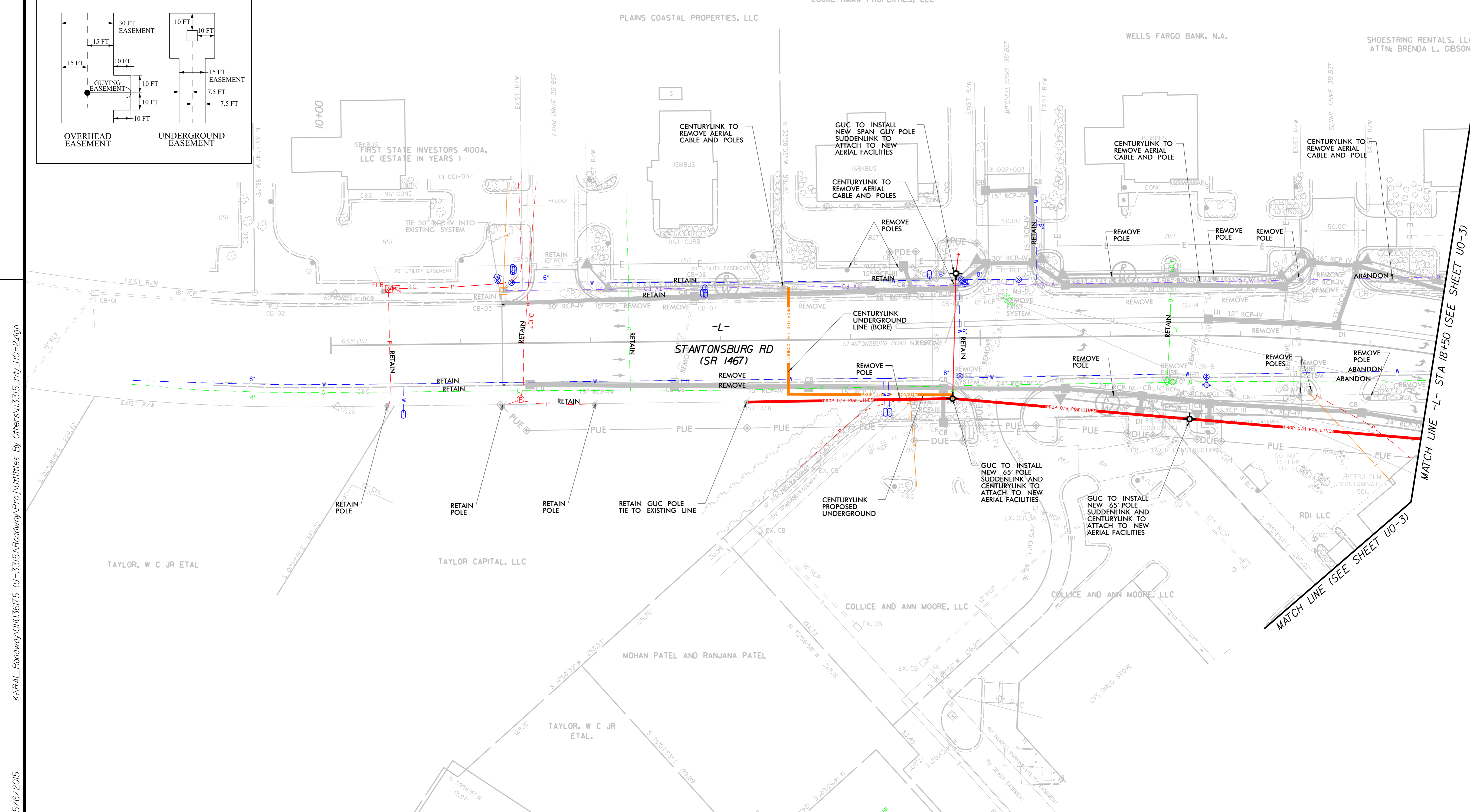
- CENTURYLINK AND SUDDENLINK COMMUNICATIONS TO RELOCATE EXISTING FACILITIES TO NEW GREENVILLE UTILITIES COMMISSION(GUC) POLES AND REMOVE EXISTING POLES AS NEEDED. GUC, CENTURYLINK, AND SUDDENLINK TO INSTALL PROPOSED UNDERGROUND BORES AT LOCATIONS SHOWN ON PLANS AND AS NEEDED.
- GUC TO CONTACT NCDOT TO STAKE PROPOSED SIGNAL POLE LOCATIONS PRIOR TO INSTALLING PROPOSED UTILITY POLES.
- PROPOSED SANITARY SEWER IS SHOWN FOR REFERENCE ONLY. THESE UTILITIES WILL BE CONSTRUCTED AFTER PROJECT IS LET.
- ALL PROPOSED UTILITY WORK SHOWN ON THESE SHEETS SHALL BE DONE BY OTHERS EXCEPT FOR SANITARY SEWER.
- CONTRACTOR TO EXPOSE FIBER OPTIC CABLES AND COORDINATE THEIR ADJUSTMENT WITH UTILITY COMPANIES BEFORE STORMDRAIN CONSTRUCTION.
- POLES WITHIN PROJECT LIMITS TO BE REMOVED BY OWNER. SEE LOCATIONS ON PLANS.

TYPICAL GUC UTILITY EASEMENTS



REVISIONS

NAD 83/95



K:\PAL_Roadway\01036175 U-3315\Roadway\Pro\Utilities By Others\U0-2.dgn

5/6/2015