

UTILITY PLAN SHEET UC-14 CORRESPONDS WITH ROADWAY PLAN SHEET 14

UTILITY PLAN SHEET UC-14 CORRESPONDS WITH ROADWAY PLAN SHEET 10



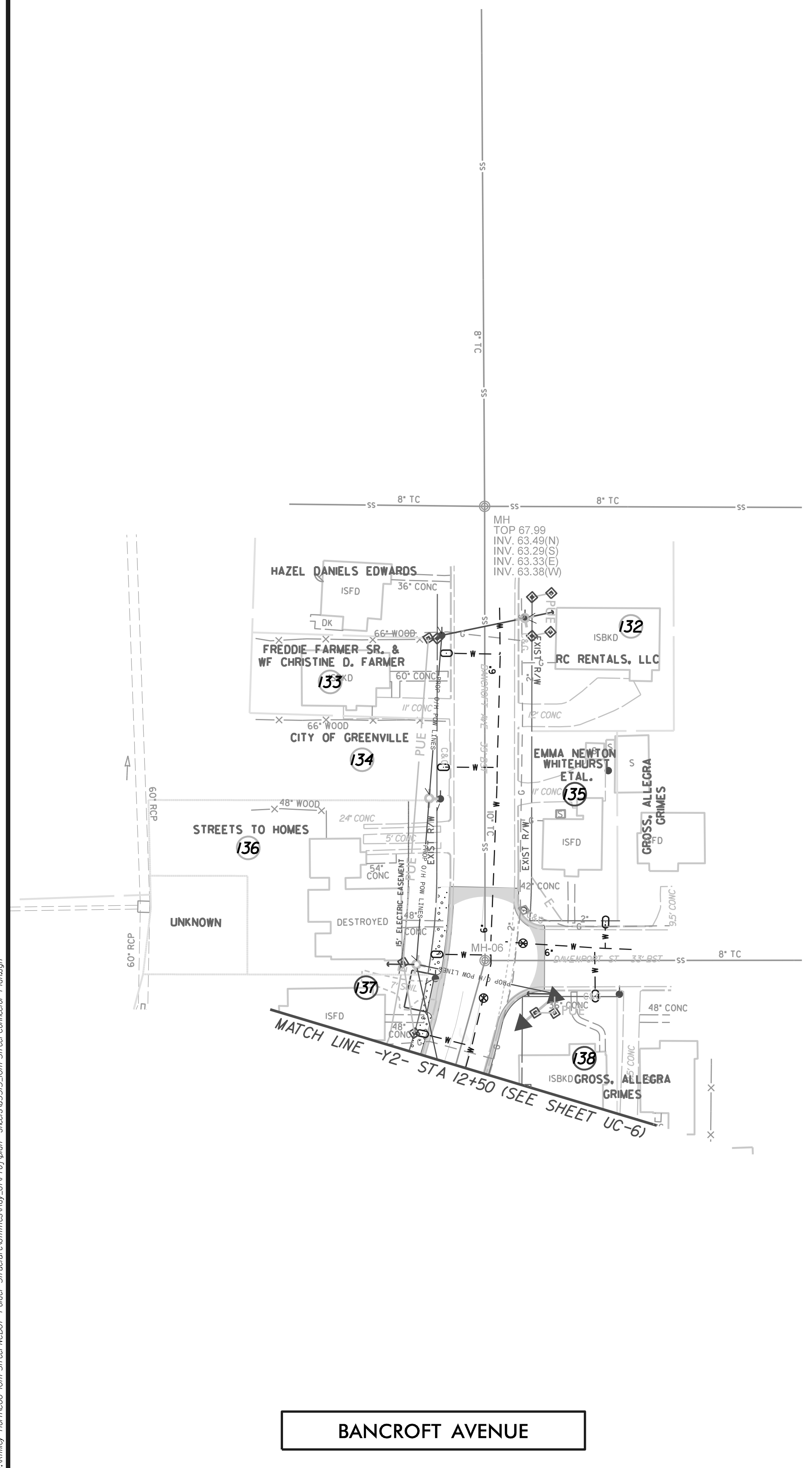
107 East Second Street
Greenville, NC 27858 (252) 752-4135
6131 Falls of Neuse Road, Suite 300
Raleigh, NC 27615 (919) 848-3347
Engineers - Planners - Surveyors
NC License: F-0334



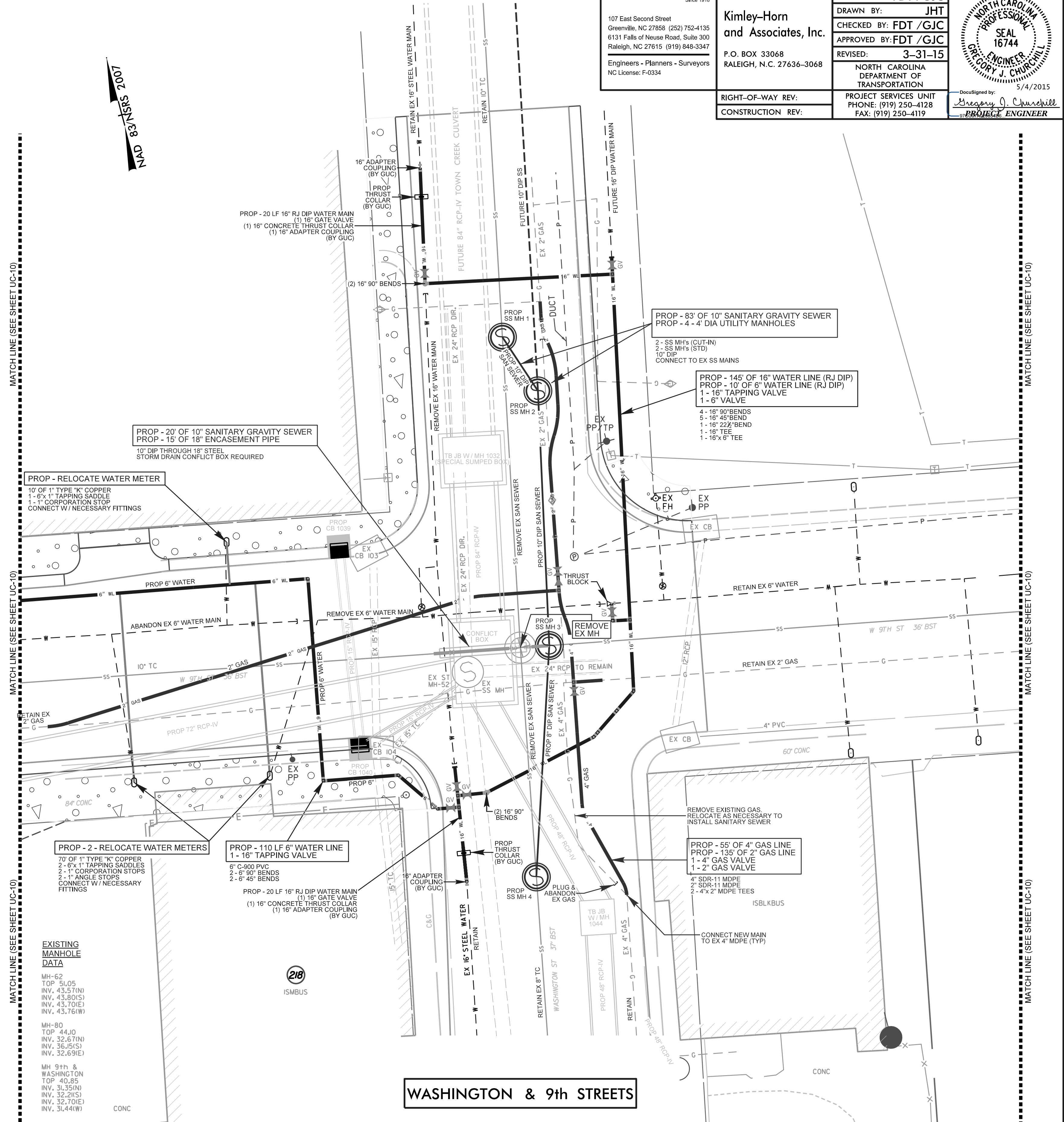
Kimley-Horn and Associates, Inc.
P.O. BOX 33068
RALEIGH, N.C. 27636-3068

PROJECT REFERENCE NO. U - 3315	SHEET NO. UC - 14
DESIGNED BY: FDT /GJC	
DRAWN BY: JHT	
CHECKED BY: FDT /GJC	
APPROVED BY: FDT /GJC	REVISED: 3-31-15
RIGHT-OF-WAY REV:	PROJECT SERVICES UNIT PHONE: (919) 250-4128 FAX: (919) 250-4119
CONSTRUCTION REV:	DESIGNED BY: <i>Gregory J. Churchill</i> PROJECT ENGINEER

REVISIONS



BANCROFT AVENUE



WASHINGTON & 9th STREETS



5/4/2015 N:\K\kim-horn\008 IDH Street NCDOT Folder Structure\Utilities\Ray_U\Proj\Notes sheets\U3315 IDH Street Connector Plan.dgn