

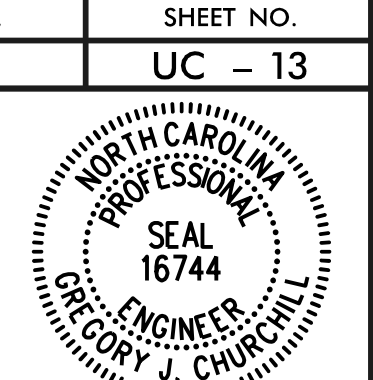
UTILITY PLAN SHEET UC-13 CORRESPONDS WITH ROADWAY PLAN SHEET 13

UTILITY PLAN SHEET UC-13 CORRESPONDS WITH ROADWAY PLAN SHEET 13

Rivers & Associates, Inc.
 Since 1918
 107 East Second Street
 Greenville, NC 27858 (252) 752-4135
 6131 Falls of Neuse Road, Suite 300
 Raleigh, NC 27615 (919) 848-3347
 Engineers - Planners - Surveyors
 NC License: F-0334

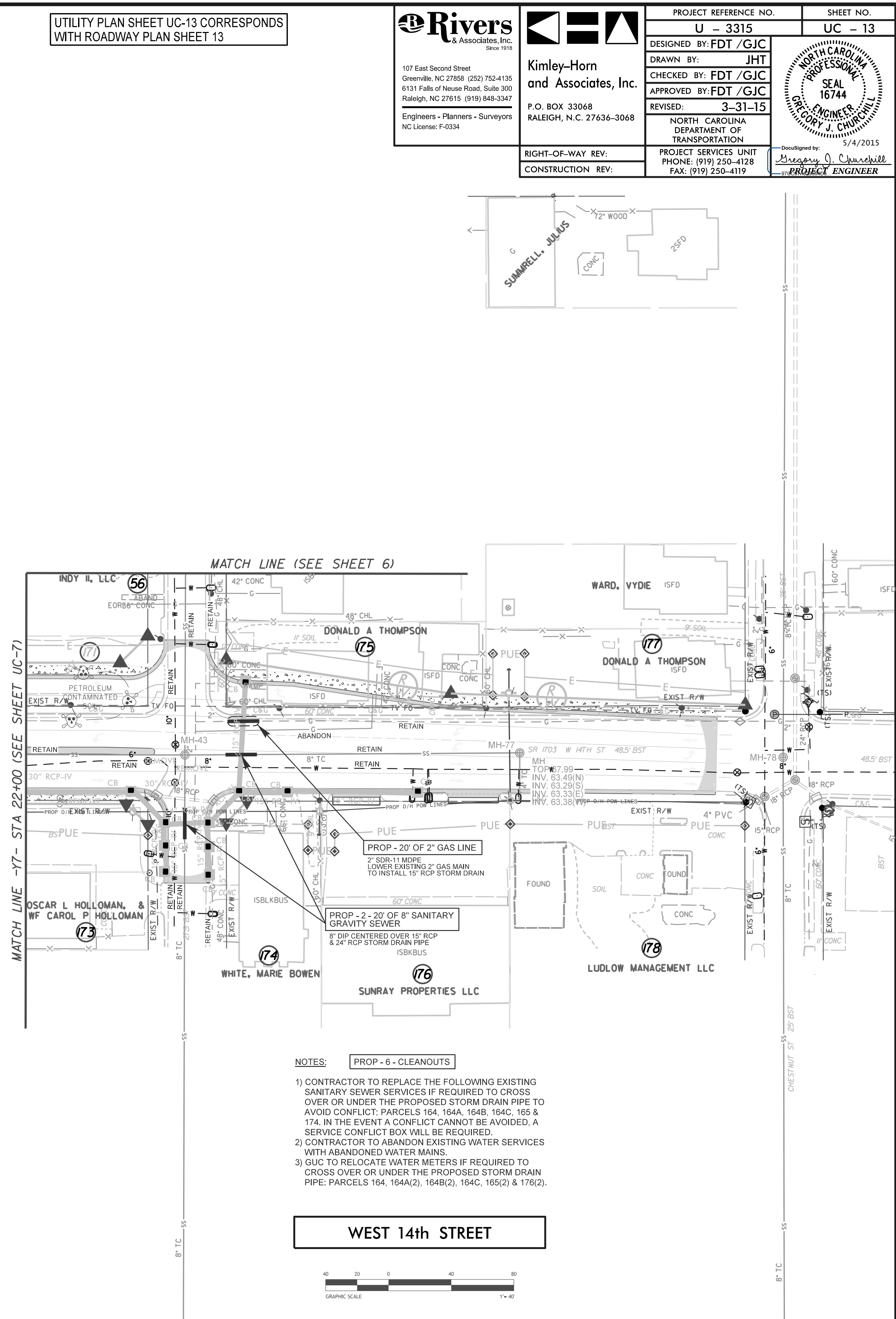
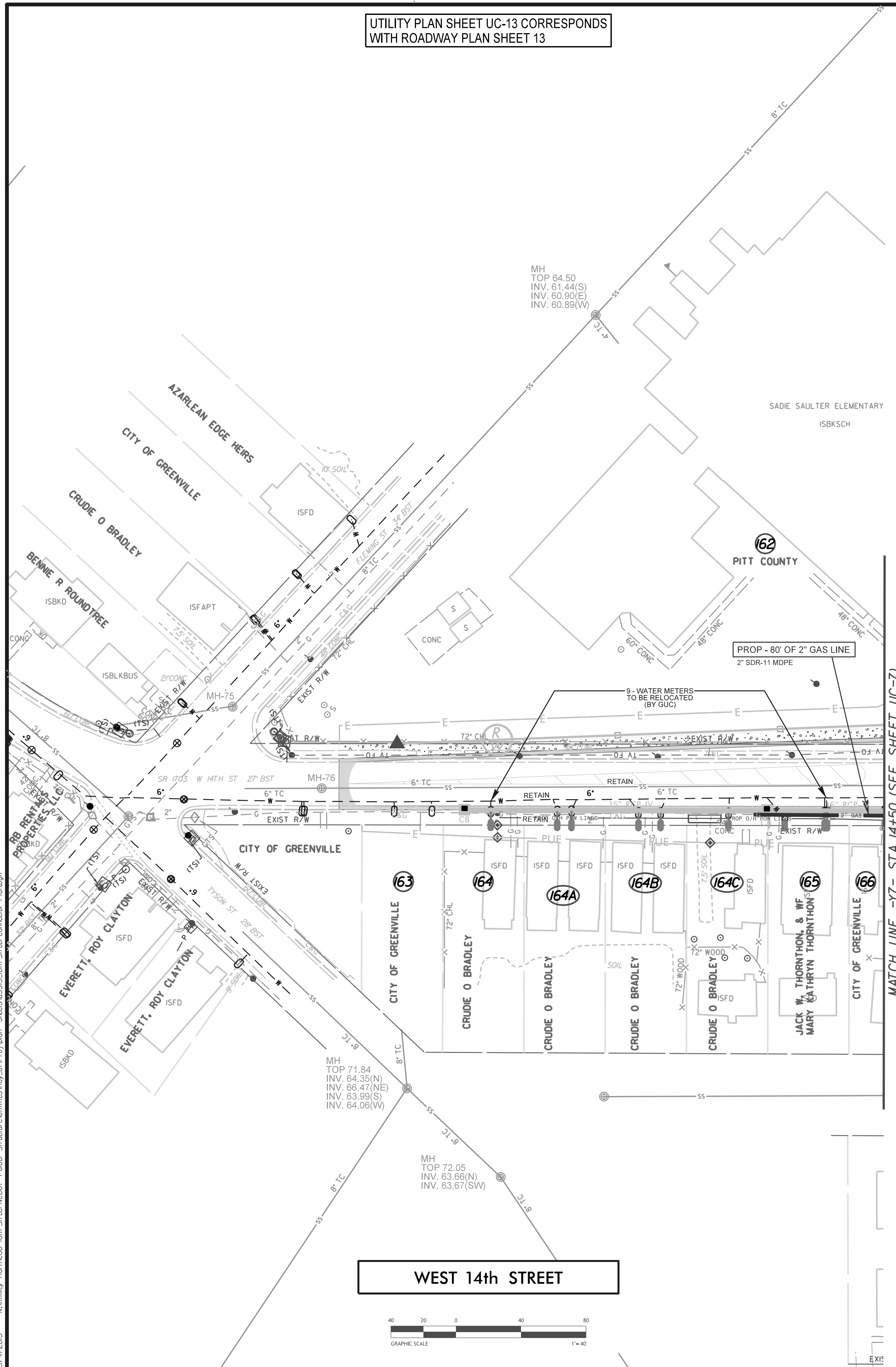
Kimley-Horn and Associates, Inc.
 P.O. BOX 33068
 RALEIGH, N.C. 27636-3068

PROJECT REFERENCE NO. U - 3315	SHEET NO. UC - 13
DESIGNED BY: FDT /GJC	DRAWN BY: JHT
CHECKED BY: FDT /GJC	APPROVED BY: FDT /GJC
REVISED: 3-31-15	
NORTH CAROLINA DEPARTMENT OF TRANSPORTATION	
RIGHT-OF-WAY REV:	PROJECT SERVICES UNIT
CONSTRUCTION REV:	PHONE: (919) 250-4128
	FAX: (919) 250-4119



Designed by: Gregory J. Churchill
 PROJECT ENGINEER

REVISIONS



5/4/2015 \\K\m\kim-horn\cog - idm - Street NCDOT - Folder - Structure\Utilities\Ray - UC-Pro\Notes - sheets\3315 - idm - Street Connector - Plan.dwg