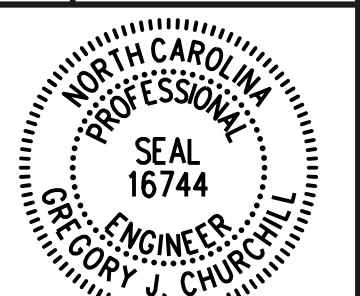


UTILITY PLAN SHEET UC-10 CORRESPONDS WITH ROADWAY PLAN SHEET 10

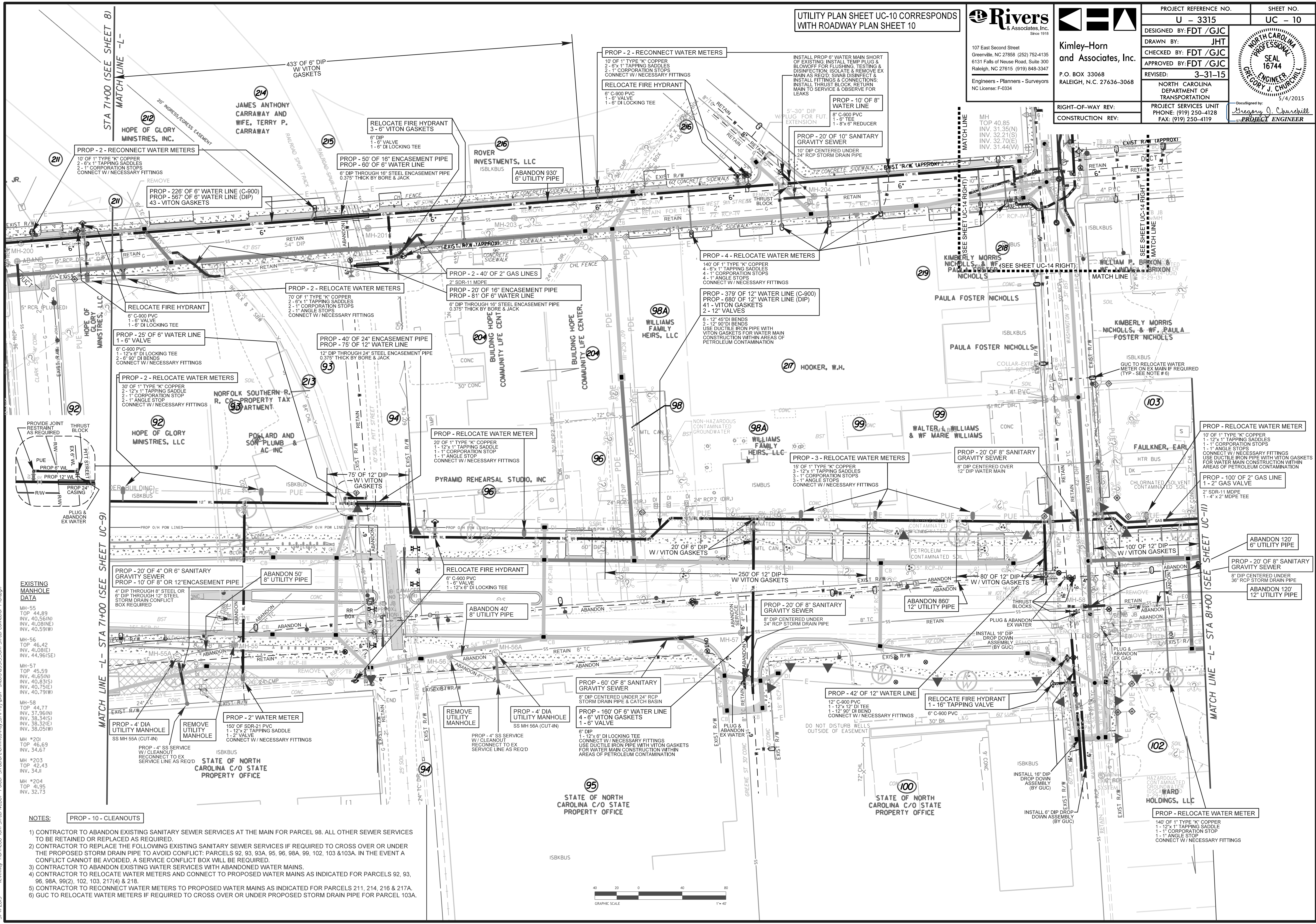
Rivers
 & Associates, Inc.
 Since 1918
 107 East Second Street
 Greenville, NC 27858 (252) 752-4135
 6131 Falls of Neuse Road, Suite 300
 Raleigh, NC 27615 (919) 848-3347
 Engineers - Planners - Surveyors
 NC License: F-0334

Kimly-Horn
 and Associates, Inc.
 P.O. BOX 33068
 RALEIGH, N.C. 27636-3068
 RIGHT-OF-WAY REV:
 CONSTRUCTION REV:

| | |
|---|---|
| PROJECT REFERENCE NO. U - 3315 | SHEET NO. UC - 10 |
| DESIGNED BY: FDT /GJC | DRAWN BY: JHT |
| CHECKED BY: FDT /GJC | APPROVED BY: FDT /GJC |
| REVISED: 3-31-15 | NORTH CAROLINA DEPARTMENT OF TRANSPORTATION |
| PROJECT SERVICES UNIT PHONE: (919) 250-4128 FAX: (919) 250-4119 | 5/4/2015 Designed by: Gregory J. Churchill PROJECT ENGINEER |



REVISIONS



EXISTING MANHOLE DATA

| | | | | |
|--------|-----------|---------------|---------------|---------------|
| MH-55 | TOP 44.89 | INV. 40.56(N) | INV. 40.08(E) | INV. 40.53(W) |
| MH-56 | TOP 46.42 | INV. 41.08(E) | INV. 41.08(E) | INV. 44.96(E) |
| MH-57 | TOP 45.59 | INV. 41.55(N) | INV. 40.83(S) | INV. 40.75(E) |
| MH-58 | TOP 44.77 | INV. 37.95(N) | INV. 38.34(S) | INV. 38.32(E) |
| MH-59 | TOP 46.69 | INV. 34.67 | | |
| MH-201 | TOP 44.13 | INV. 41.55(N) | INV. 40.83(S) | INV. 40.75(E) |
| MH-203 | TOP 42.43 | INV. 34.11 | | |
| MH-204 | TOP 41.95 | INV. 32.73 | | |

- NOTES:**
- 1) CONTRACTOR TO ABANDON EXISTING SANITARY SEWER SERVICES AT THE MAIN FOR PARCEL 98. ALL OTHER SEWER SERVICES TO BE RETAINED OR REPLACED AS REQUIRED.
 - 2) CONTRACTOR TO REPLACE THE FOLLOWING EXISTING SANITARY SEWER SERVICES IF REQUIRED TO CROSS OVER OR UNDER THE PROPOSED STORM DRAIN PIPE TO AVOID CONFLICT: PARCELS 92, 93, 93A, 95, 96, 98A, 99, 102, 103 & 103A. IN THE EVENT A CONFLICT CANNOT BE AVOIDED, A SERVICE CONFLICT BOX WILL BE REQUIRED.
 - 3) CONTRACTOR TO ABANDON EXISTING WATER SERVICES WITH ABANDONED WATER MAINS.
 - 4) CONTRACTOR TO RELOCATE WATER METERS AND CONNECT TO PROPOSED WATER MAINS AS INDICATED FOR PARCELS 92, 93, 96, 98A, 99(2), 102, 103, 217(4) & 218.
 - 5) CONTRACTOR TO RECONNECT WATER METERS TO PROPOSED WATER MAINS AS INDICATED FOR PARCELS 211, 214, 216 & 217A.
 - 6) GUC TO RELOCATE WATER METERS IF REQUIRED TO CROSS OVER OR UNDER PROPOSED STORM DRAIN PIPE FOR PARCEL 103A.



5/4/2015 Kimly-Horn & Associates, Inc. Folder: Structures/Utilities/UC-10/UC-10 Utility Plan - 10th Street Connector - Plan/Drawn