

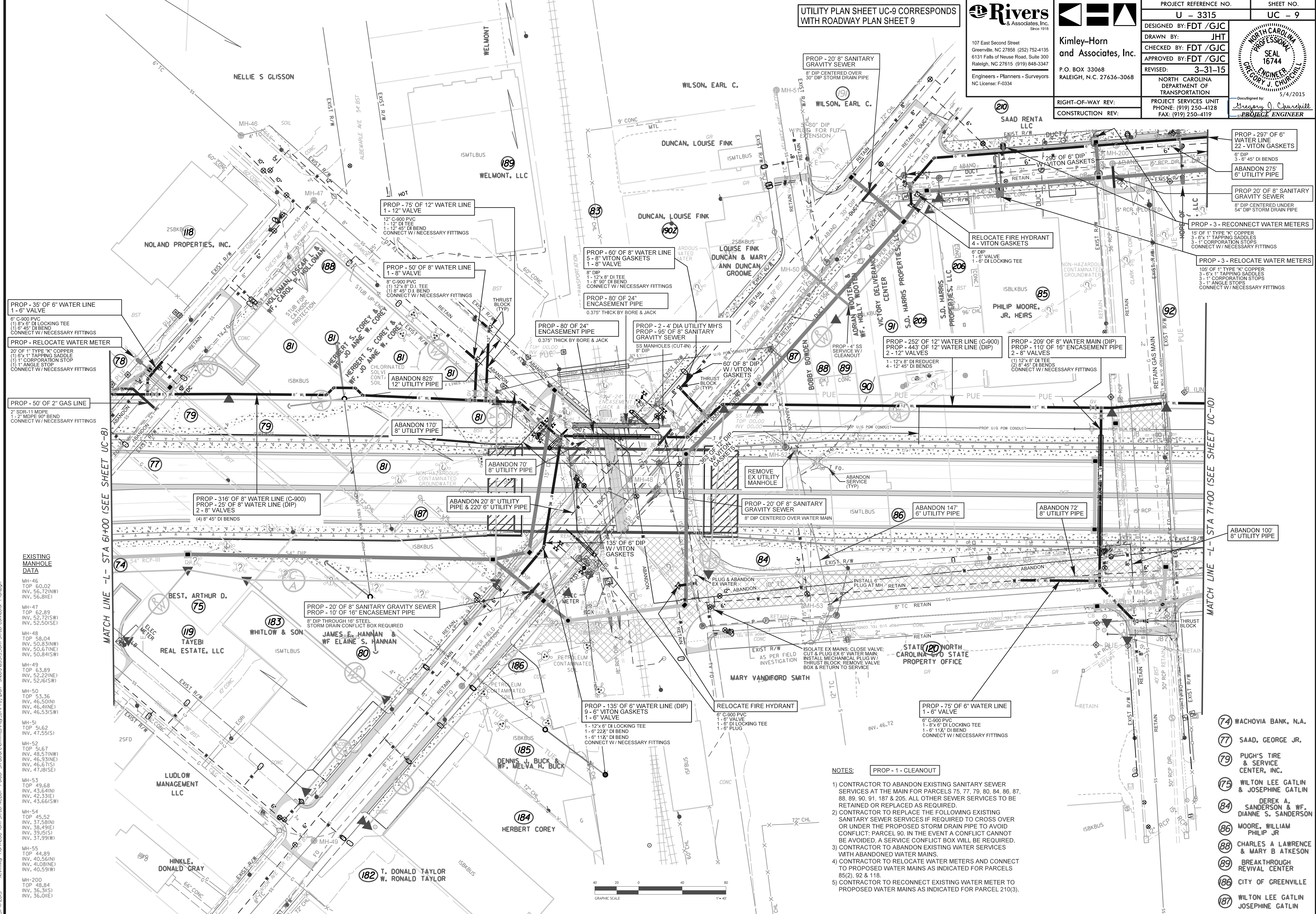
REVISIONS  
 5/4/2015 Kimly-Horn & Associates, Inc. 107 East Second Street Greenville, NC 27838 (252) 752-4135 6131 Falls of Neuse Road, Suite 300 Raleigh, NC 27615 (919) 848-3347 Engineers - Planners - Surveyors NC License: F-0334  
 Kimly-Horn and Associates, Inc. P.O. BOX 33068 RALEIGH, N.C. 27636-3068  
 PROJECT REFERENCE NO. U - 3315 SHEET NO. UC - 9  
 DESIGNED BY: FDT /GJC DRAWN BY: JHT CHECKED BY: FDT /GJC APPROVED BY: FDT /GJC  
 REVISIONS: 3-31-15 NORTH CAROLINA DEPARTMENT OF TRANSPORTATION PROJECT SERVICES UNIT PHONE: (919) 250-4128 FAX: (919) 250-4119  
 RIGHT-OF-WAY REV: CONSTRUCTION REV: PROJECT ENGINEER  
 5/4/2015  
 Designed by: Gregory J. Churchill  
 PROJECT ENGINEER  
 SEAL 16744  
 NORTH CAROLINA PROFESSIONAL ENGINEERS  
 GREGORY J. CHURCHILL  
 5/4/2015  
 PROJECT ENGINEER  
 PROJECT REFERENCE NO. U - 3315 SHEET NO. UC - 9  
 DESIGNED BY: FDT /GJC DRAWN BY: JHT CHECKED BY: FDT /GJC APPROVED BY: FDT /GJC  
 REVISIONS: 3-31-15 NORTH CAROLINA DEPARTMENT OF TRANSPORTATION PROJECT SERVICES UNIT PHONE: (919) 250-4128 FAX: (919) 250-4119  
 RIGHT-OF-WAY REV: CONSTRUCTION REV: PROJECT ENGINEER  
 5/4/2015  
 Designed by: Gregory J. Churchill  
 PROJECT ENGINEER  
 SEAL 16744  
 NORTH CAROLINA PROFESSIONAL ENGINEERS  
 GREGORY J. CHURCHILL  
 5/4/2015  
 PROJECT ENGINEER

UTILITY PLAN SHEET UC-9 CORRESPONDS WITH ROADWAY PLAN SHEET 9

**Rivers** & Associates, Inc. Since 1918  
 107 East Second Street Greenville, NC 27838 (252) 752-4135 6131 Falls of Neuse Road, Suite 300 Raleigh, NC 27615 (919) 848-3347  
 Engineers - Planners - Surveyors NC License: F-0334

**Kimly-Horn and Associates, Inc.**  
 P.O. BOX 33068 RALEIGH, N.C. 27636-3068

PROJECT REFERENCE NO. U - 3315 SHEET NO. UC - 9  
 DESIGNED BY: FDT /GJC DRAWN BY: JHT CHECKED BY: FDT /GJC APPROVED BY: FDT /GJC  
 REVISIONS: 3-31-15 NORTH CAROLINA DEPARTMENT OF TRANSPORTATION PROJECT SERVICES UNIT PHONE: (919) 250-4128 FAX: (919) 250-4119  
 RIGHT-OF-WAY REV: CONSTRUCTION REV: PROJECT ENGINEER  
 5/4/2015  
 Designed by: Gregory J. Churchill  
 PROJECT ENGINEER  
 SEAL 16744  
 NORTH CAROLINA PROFESSIONAL ENGINEERS  
 GREGORY J. CHURCHILL  
 5/4/2015  
 PROJECT ENGINEER



**EXISTING MANHOLE DATA**

MH-46	TOP 60.02	INV. 56.72(NW)	INV. 56.81(E)
MH-47	TOP 62.89	INV. 52.72(SW)	INV. 52.50(SE)
MH-48	TOP 58.04	INV. 50.83(NW)	INV. 50.87(NE)
MH-49	TOP 63.89	INV. 52.22(NE)	INV. 52.16(SW)
MH-50	TOP 53.36	INV. 46.50(N)	INV. 46.41(E)
MH-51	TOP 51.62	INV. 47.55(S)	
MH-52	TOP 51.67	INV. 48.57(NW)	INV. 46.93(NE)
MH-53	TOP 49.68	INV. 43.64(N)	INV. 42.33(E)
MH-54	TOP 45.52	INV. 37.58(N)	INV. 38.49(E)
MH-55	TOP 44.89	INV. 40.56(N)	INV. 41.08(NE)
MH-200	TOP 48.84	INV. 36.31(S)	INV. 36.01(E)

- NOTES:**
- 1) CONTRACTOR TO ABANDON EXISTING SANITARY SEWER SERVICES AT THE MAIN FOR PARCELS 75, 77, 79, 80, 84, 86, 87, 88, 89, 90, 91, 187 & 205. ALL OTHER SEWER SERVICES TO BE RETAINED OR REPLACED AS REQUIRED.
  - 2) CONTRACTOR TO REPLACE THE FOLLOWING EXISTING SANITARY SEWER SERVICES IF REQUIRED TO CROSS OVER OR UNDER THE PROPOSED STORM DRAIN PIPE TO AVOID CONFLICT: PARCEL 90. IN THE EVENT A CONFLICT CANNOT BE AVOIDED, A SERVICE CONFLICT BOX WILL BE REQUIRED.
  - 3) CONTRACTOR TO ABANDON EXISTING WATER SERVICES WITH ABANDONED WATER MAINS.
  - 4) CONTRACTOR TO RELOCATE WATER METERS AND CONNECT TO PROPOSED WATER MAINS AS INDICATED FOR PARCELS 85(2), 92 & 118.
  - 5) CONTRACTOR TO RECONNECT EXISTING WATER METER TO PROPOSED WATER MAINS AS INDICATED FOR PARCEL 210(3).

- 74 WACHOVIA BANK, N.A.
- 77 SAAD, GEORGE JR.
- 79 PUGH'S TIRE & SERVICE CENTER, INC.
- 75 WILTON LEE GATLIN & JOSEPHINE GATLIN
- 84 DEREK A. SANDERSON & WF. DIANNE S. SANDERSON
- 86 MOORE, WILLIAM PHILIP JR
- 88 CHARLES A LAWRENCE & MARY B ATKESON
- 89 BREAKTHROUGH REVIVAL CENTER
- 186 CITY OF GREENVILLE
- 187 WILTON LEE GATLIN JOSEPHINE GATLIN