

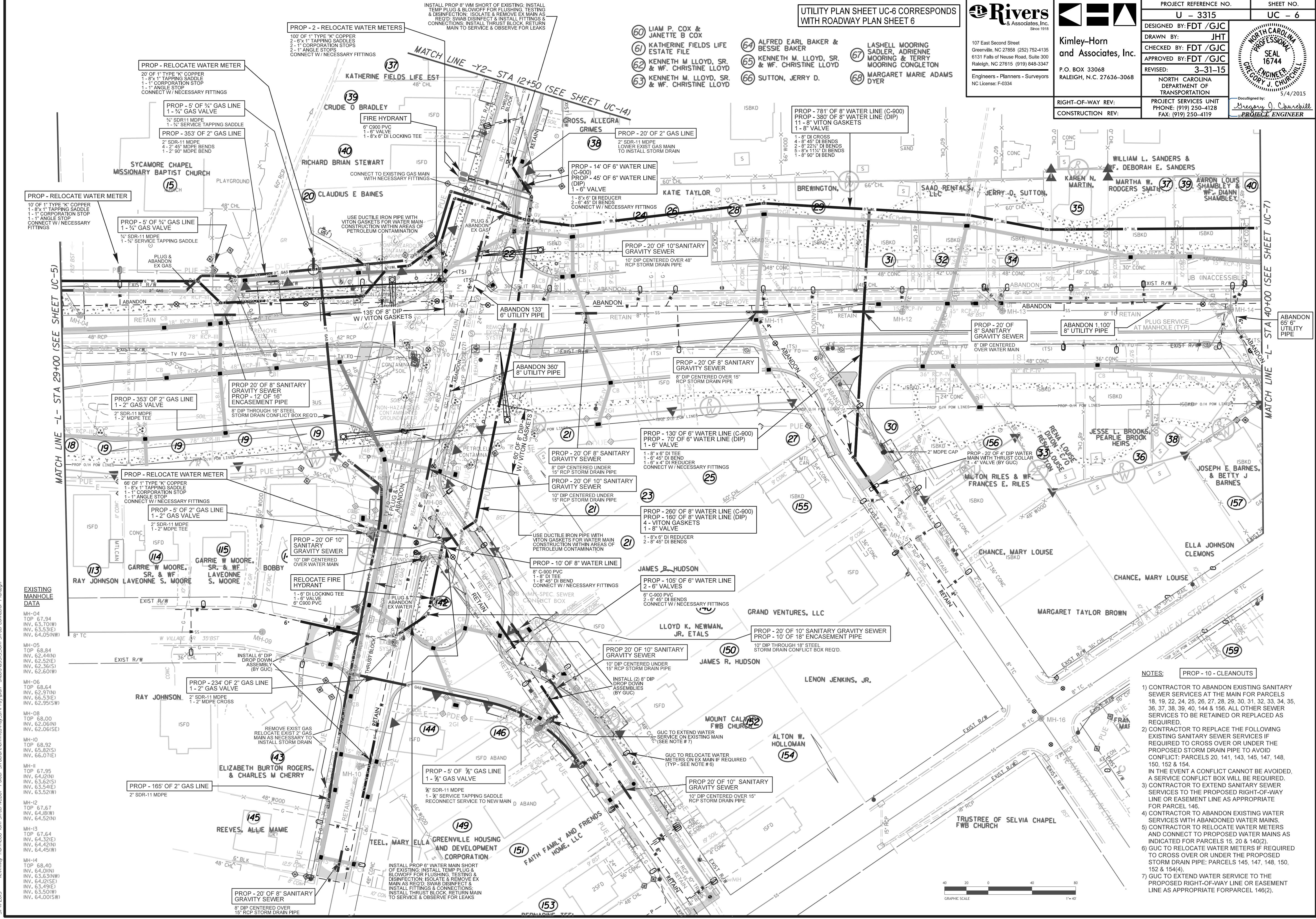
REVISIONS

UTILITY PLAN SHEET UC-6 CORRESPONDS WITH ROADWAY PLAN SHEET 6

Rivers
& Associates, Inc.
107 East Second Street
Greenville, NC 27858 (252) 752-4135
6131 Falls of Neuse Road, Suite 300
Raleigh, NC 27615 (919) 848-3347
Engineers - Planners - Surveyors
NC License: F-0334

Kimley-Horn
and Associates, Inc.
P.O. BOX 33068
RALEIGH, N.C. 27636-3068

PROJECT REFERENCE NO. U - 3315	SHEET NO. UC - 6
DESIGNED BY: FDT /GJC	
DRAWN BY: JHT	
CHECKED BY: FDT /GJC	
APPROVED BY: FDT /GJC	REVISED: 3-31-15
REVISIONS:	NORTH CAROLINA DEPARTMENT OF TRANSPORTATION
RIGHT-OF-WAY REV:	PROJECT SERVICES UNIT PHONE: (919) 250-4128 FAX: (919) 250-4119
CONSTRUCTION REV:	Designed by: <i>Gregory J. Churchill</i> PROJECT ENGINEER



EXISTING MANHOLE DATA

MH-04	TOP 67.94 INV. 63.70(W) INV. 63.53(E) INV. 64.05(NW)
MH-05	TOP 68.84 INV. 62.44(N) INV. 62.52(E) INV. 62.36(S) INV. 62.60(W)
MH-06	TOP 68.64 INV. 62.97(N) INV. 66.53(E) INV. 62.95(SW)
MH-08	TOP 68.00 INV. 65.82(S) INV. 66.07(E)
MH-10	TOP 68.92 INV. 65.82(S) INV. 66.07(E)
MH-11	TOP 67.95 INV. 64.02(N) INV. 63.62(S) INV. 63.54(E) INV. 63.52(W)
MH-12	TOP 67.67 INV. 64.81(W) INV. 64.52(N)
MH-13	TOP 67.64 INV. 64.32(E) INV. 64.42(N) INV. 64.45(W)
MH-14	TOP 68.40 INV. 64.00(N) INV. 63.63(NW) INV. 64.02(E) INV. 63.49(E) INV. 63.50(W) INV. 64.00(SW)

- NOTES:**
- 1) CONTRACTOR TO ABANDON EXISTING SANITARY SEWER SERVICES AT THE MAIN FOR PARCELS 18, 19, 22, 24, 25, 26, 27, 28, 29, 30, 31, 32, 33, 34, 35, 36, 37, 38, 39, 40, 144 & 156. ALL OTHER SEWER SERVICES TO BE RETAINED OR REPLACED AS REQUIRED.
 - 2) CONTRACTOR TO REPLACE THE FOLLOWING EXISTING SANITARY SEWER SERVICES IF REQUIRED TO CROSS OVER OR UNDER THE PROPOSED STORM DRAIN PIPE TO AVOID CONFLICT: PARCELS 20, 141, 143, 145, 147, 148, 150, 152 & 154. IN THE EVENT A CONFLICT CANNOT BE AVOIDED, A SERVICE CONFLICT BOX WILL BE REQUIRED.
 - 3) CONTRACTOR TO EXTEND SANITARY SEWER SERVICES TO THE PROPOSED RIGHT-OF-WAY LINE OR EASEMENT LINE AS APPROPRIATE FOR PARCEL 146.
 - 4) CONTRACTOR TO ABANDON EXISTING WATER SERVICES WITH ABANDONED WATER MAINS.
 - 5) CONTRACTOR TO RELOCATE WATER METERS AND CONNECT TO PROPOSED WATER MAINS AS INDICATED FOR PARCELS 15, 20 & 140(2).
 - 6) GUC TO RELOCATE WATER METERS IF REQUIRED TO CROSS OVER OR UNDER THE PROPOSED STORM DRAIN PIPE: PARCELS 145, 147, 148, 150, 152 & 154(4).
 - 7) GUC TO EXTEND WATER SERVICE TO THE PROPOSED RIGHT-OF-WAY LINE OR EASEMENT LINE AS APPROPRIATE FOR PARCEL 146(2).



5/4/2015 Kimley-Horn/COG - 03th Street NCDOT - Folder: Structures/Utilities/03th Street Connector - Plan/Drawn: sheet:UC-3315_03th Street Connector - Plan/Drawn