

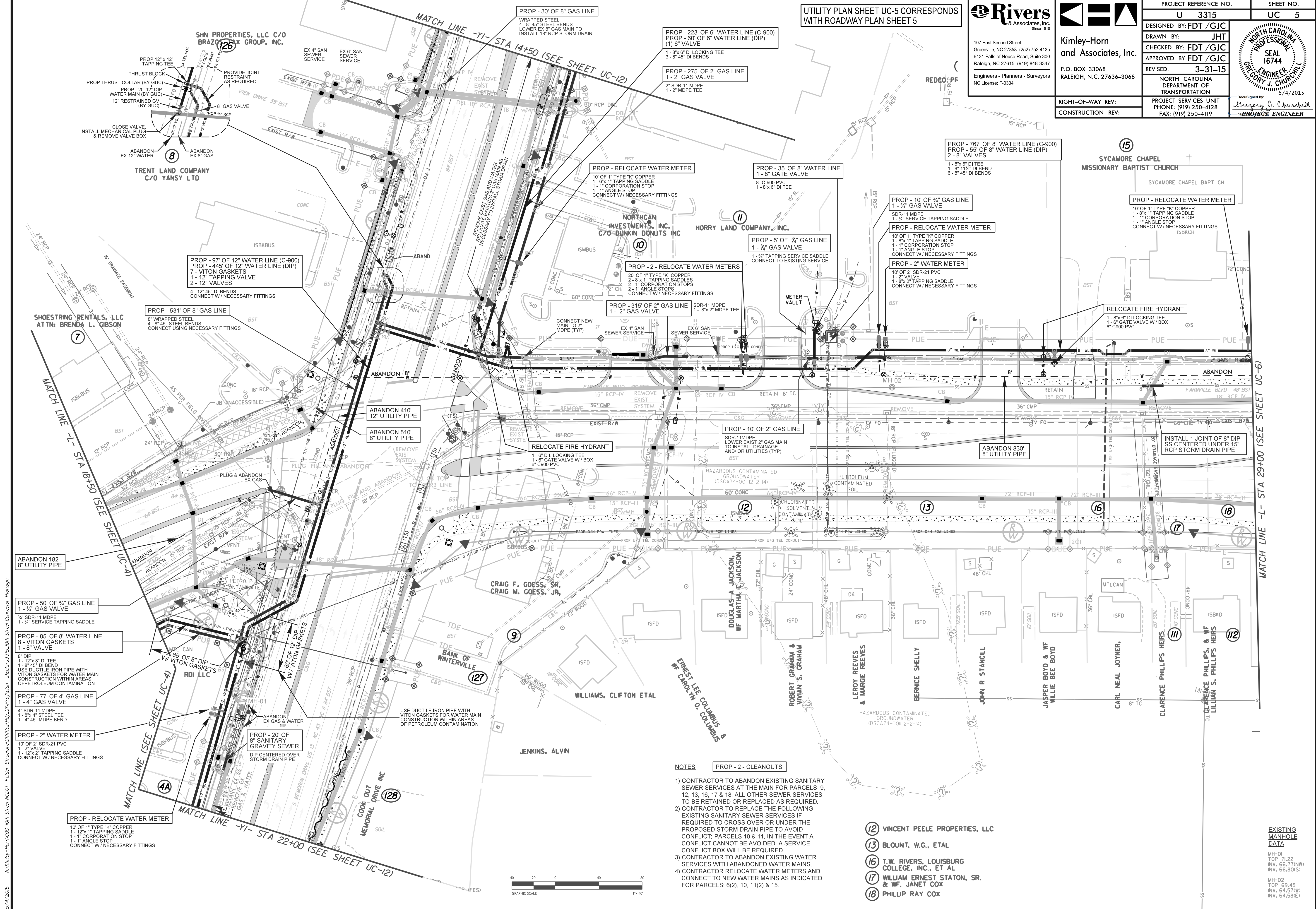
REVISIONS

UTILITY PLAN SHEET UC-5 CORRESPONDS WITH ROADWAY PLAN SHEET 5

**Rivers & Associates, Inc.**  
107 East Second Street  
Greenville, NC 27858 (252) 752-4135  
6131 Falls of Neuse Road, Suite 300  
Raleigh, NC 27615 (919) 848-3347  
Engineers - Planners - Surveyors  
NC License: F-0334

**Kimley-Horn and Associates, Inc.**  
P.O. BOX 33068  
RALEIGH, N.C. 27636-3068

PROJECT REFERENCE NO. <b>U - 3315</b>	SHEET NO. <b>UC - 5</b>
DESIGNED BY: <b>FDT /GJC</b>	
DRAWN BY: <b>JHT</b>	
CHECKED BY: <b>FDT /GJC</b>	NORTH CAROLINA DEPARTMENT OF TRANSPORTATION
APPROVED BY: <b>FDT /GJC</b>	
REVISED: <b>3-31-15</b>	PROJECT SERVICES UNIT PHONE: (919) 250-4128 FAX: (919) 250-4119
RIGHT-OF-WAY REV:	CONSTRUCTION REV:



- NOTES:**
- PROJ - 2 - CLEANOUTS**
  - 1) CONTRACTOR TO ABANDON EXISTING SANITARY SEWER SERVICES AT THE MAIN FOR PARCELS 9, 12, 13, 16, 17 & 18. ALL OTHER SEWER SERVICES TO BE RETAINED OR REPLACED AS REQUIRED.
  - 2) CONTRACTOR TO REPLACE THE FOLLOWING EXISTING SANITARY SEWER SERVICES IF REQUIRED TO CROSS OVER OR UNDER THE PROPOSED STORM DRAIN PIPE TO AVOID CONFLICT: PARCELS 10 & 11. IN THE EVENT A CONFLICT CANNOT BE AVOIDED, A SERVICE CONFLICT BOX WILL BE REQUIRED.
  - 3) CONTRACTOR TO ABANDON EXISTING WATER SERVICES WITH ABANDONED WATER MAINS.
  - 4) CONTRACTOR RELOCATE WATER METERS AND CONNECT TO NEW WATER MAINS AS INDICATED FOR PARCELS: 6(2), 10, 11(2) & 15.

- 12** VINCENT PEELE PROPERTIES, LLC
- 13** BLOUNT, W.G. ETAL
- 16** T.W. RIVERS, LOUISBURG COLLEGE, INC., ET AL
- 17** WILLIAM ERNEST STATON, SR. & WF. JANET COX
- 18** PHILLIP RAY COX

**EXISTING MANHOLE DATA**

MH-01  
TOP 71.22  
INV. 66.77(N)

MH-02  
TOP 69.45  
INV. 64.57(W)  
INV. 64.58(E)

5/4/2015  
N:\M\kim-horn\000 - 000 - Street\NC DOT - Street\UC-5 - 000 - Street Connector - Plan.dwg  
shes053315 - 000 - Street Connector - Plan.dwg

