

### PLANT SCHEDULE L2

TREES	QTY	BOTANICAL NAME	COMMON NAME	CONT	CAL	SIZE	REMARKS	
LN	61	Lagerstroemia x 'Natchez'	Natchez Crape Myrtle	B&B		10' HT.	Three Canes	
QN	6	Quercus nuttallii	Nuttall Oak	B&B	2" Cal	14' HT		
SHRUBS	QTY	BOTANICAL NAME	COMMON NAME	SIZE	WIDTH	HEIGHT	SPACING	REMARKS
BD	12	Buddleja davidii nanhoensis 'Petite Indigo' TM	Petite Indigo Butterfly Bush	Cont.	24"	12"-15"	36" o.c.	
CA	60	Clethra alnifolia 'Sixteen Candles'	Summersweet Clethra	Cont.	24"	24"	36" o.c.	
FI	9	Forsythia x intermedia 'Mindor' PP# 19,321	Show Off Forsythia	Cont.	30"	30"	54" o.c.	
GL	10	Gaura lindheimeri 'Whirling Butterflies'	Whirling Butterflies Gaura	Cont.	18"	18"	24" o.c.	
IB	60	Ilex vomitoria 'Nana'	Dwarf Yaupon Holly	Cont.	18"	18"	36" o.c.	
IH	42	Raphiolepis indica 'Conor' PP#9398	Eleanor Taber Indian Hawthorn	Cont.	24"	24"	36" o.c.	
IS	6	Ilex crenata 'Steeds'	Steeds Japanese Holly	Cont.	36"	36"	60" o.c.	
NH	45	Ilex glabra 'Chamzin' TM	Nordic Holly	Cont.	24"	24"	48" o.c.	
RO	8	Rosmarinus officinalis 'Arp'	Arp Rosemary	Cont.	18"	18"	42" o.c.	
RR	24	Rosa x 'Radsunny' PP# 18562	Sunny Knockout Rose	Cont.		12"-15"	36" o.c.	
ORNAMENTAL GRASSES	QTY	BOTANICAL NAME	COMMON NAME	SIZE	WIDTH	HEIGHT	SPACING	REMARKS
PV	10	Panicum virgatum 'Dallas Blues' TM	Dallas Blues Switch Grass	Cont.	24"	24"	42" o.c.	
GROUND COVERS	QTY	BOTANICAL NAME	COMMON NAME	CONT	WIDTH	HEIGHT	SPACING	REMARKS
AO	40	Aster oblongifolius 'October Skies'	Aromatic Aster	Cont.	12"	12"	18" o.c.	
LM	210	Liriope muscari 'Big Blue'	Big Blue Lilyturf	1 gal	12"	12"	24" o.c.	
ORNAMENTAL GRASSES	QTY	BOTANICAL NAME	COMMON NAME	CONT	WIDTH	HEIGHT	SPACING	REMARKS
PH	39	Pennisetum alopecuroides 'Hameln'	Hameln Dwarf Fountain Grass	Cont.	12"	12"	18" o.c.	
SOD/SEED	QTY	BOTANICAL NAME	COMMON NAME	CONT	WIDTH	HEIGHT	SPACING	REMARKS
ET	81,438 sf	Eremochloa ophiuroides 'Tif Blair' TM	Centipede Grass	Seed				
MULCH	10,900 SF	Double Shredded Hardwood						

PLAN LEGEND	
☒	NEIGHBORHOOD MARKER DETAIL SHEET LD 2
✳	PEDESTRIAN POST TOP LIGHT
☼	STREET LIGHT
▨	SODDED LAWN ALL OTHER DISTURBED AREAS TO BE SEEDED AS PART OF ROADWAY WORK
▩	SEEDED LAWN

- LANDSCAPE NOTES:**
- ALL PLANT MATERIAL SHALL COMPLY WITH 'AMERICAN STANDARDS FOR NURSERY STOCK' (ANSI Z60.1).
  - ANY PLANT SUBSTITUTIONS OR FIELD ADJUSTMENTS SHALL BE APPROVED BY THE CITY OF GREENVILLE OR OWNER'S REPRESENTATIVE.
  - ALL PLANTED BEDS TO BE AMENDED WITH THE SPECIFIED AMOUNT OF COMPOST AND TOPSOIL PER PROJECT SPECIAL PROVISIONS.
  - ANY TREES NOT INCORPORATED INTO PLANT BEDS SHALL HAVE A 4' DIAMETER MULCH RING.
  - ALL SINGLE STEM TREES SHALL BE LIMBED UP MINIMUM 6' FOR SITE DISTANCE.
  - ALL PLANT BEDS TO HAVE MULCH LAYER PER DETAILS.
  - ALL SODDED AND SEEDED AREAS TO BE IMPROVED VARIETY CENTIPEDE PER SPECIAL PROVISIONS.

- GENERAL NOTES:**
- DESIGN SPEED : 45MPH

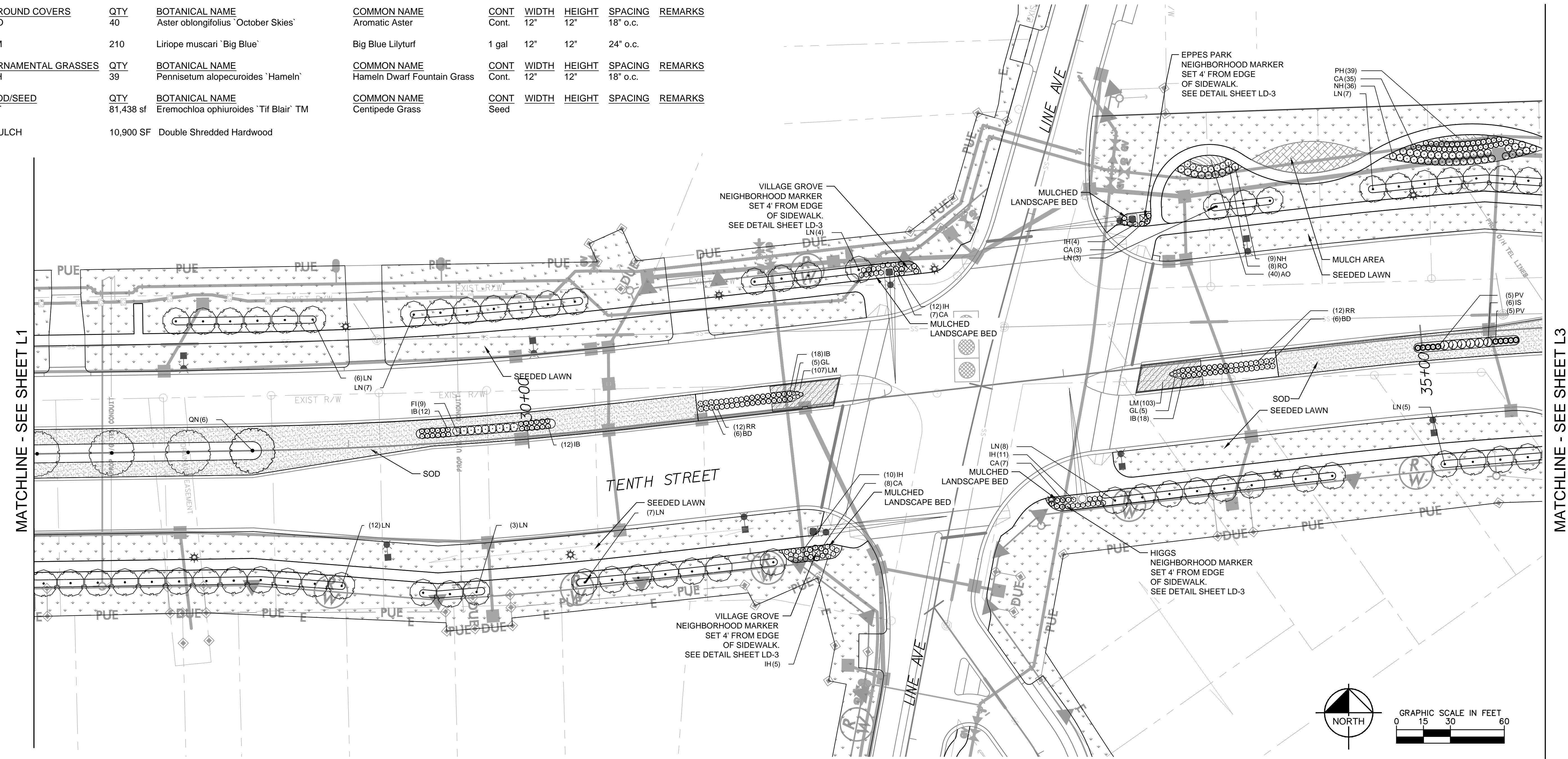
**Kimley»Horn**  
Kimley-Horn and Associates, Inc.  
P.O. BOX 33068  
RALEIGH, N.C. 27636

PROJECT REFERENCE NO. U-3315  
SHEET NO. L 2

DocuSigned by:  
*Brandon P. White*  
9931B1C7B2D44DE...  
5/8/2015

LANDSCAPE ARCHITECT  
NORTH CAROLINA  
REGISTERED LANDSCAPE ARCHITECT  
1625  
BRANDON PHILLIP WHITE

RIGHT-OF-WAY REV.  
CONST. REV.



REVISIONS

MATCHLINE - SEE SHEET L1

MATCHLINE - SEE SHEET L3

