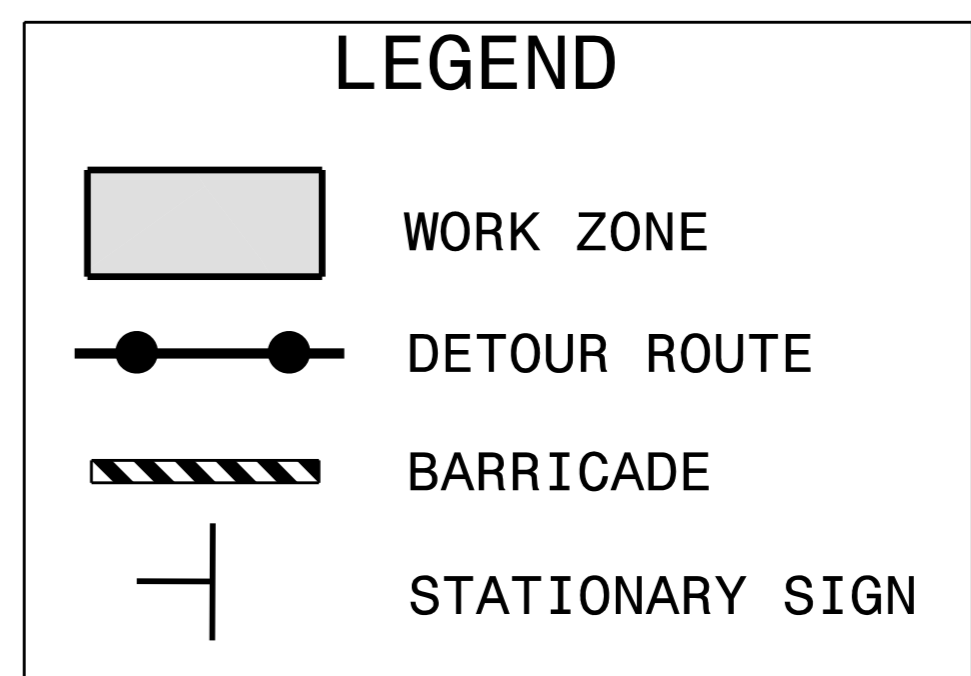
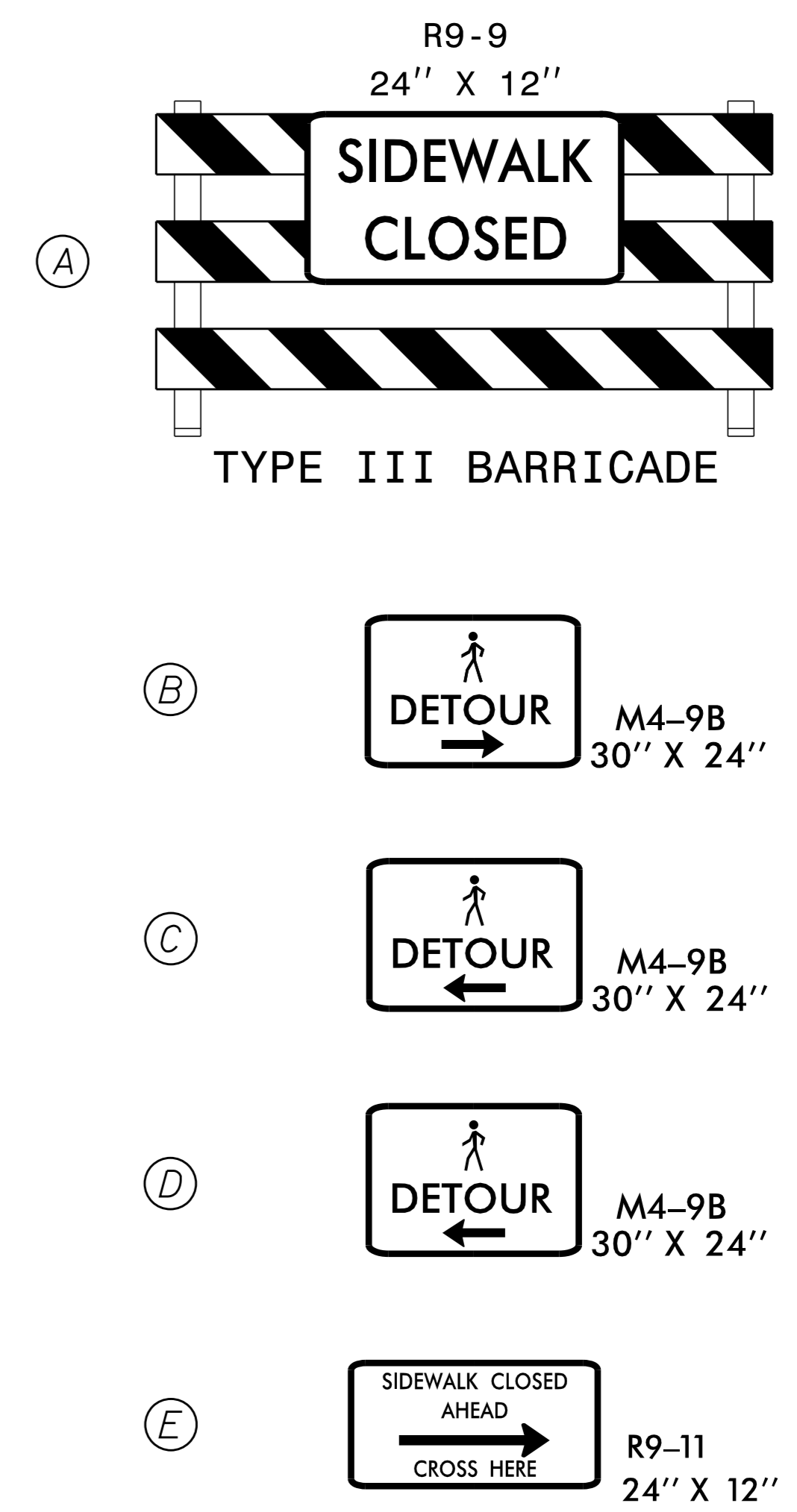


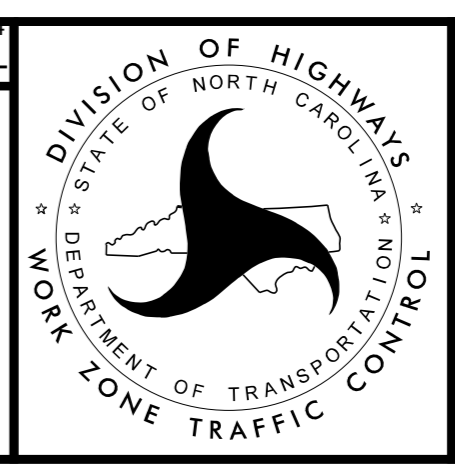
**PEDESTRIAN DETOUR ROUTE FOR  
PARIS AVENUE AND RALEIGH AVENUE CLOSURES**

NOTE: SEE SHEET TMP-33 FOR  
ASSOCIATED PARIS STREET AND  
RALEIGH AVENUE CLOSURES



**Kimley»Horn**

APPROVED: Jason Pace DATE: 11/17/2014



**TRAFFIC CONTROL  
DETOUR SHEET**

K:\RAL\_Roadway\01036175\_U-3315\NT\TrafficControl\Sheets\U3315\_TMP\_psM5.dgn 11/4/2014